



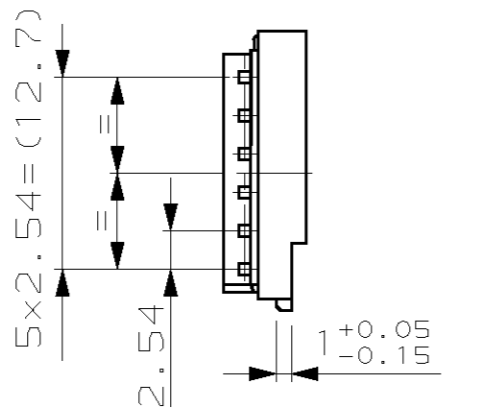
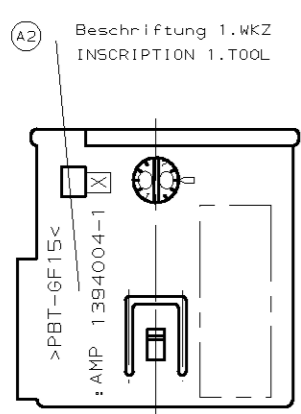
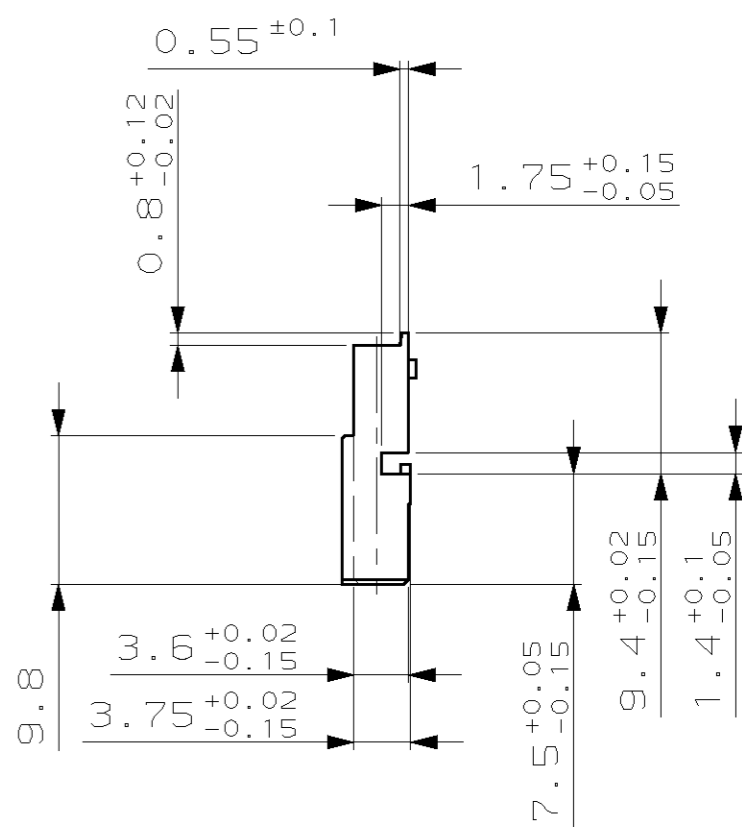
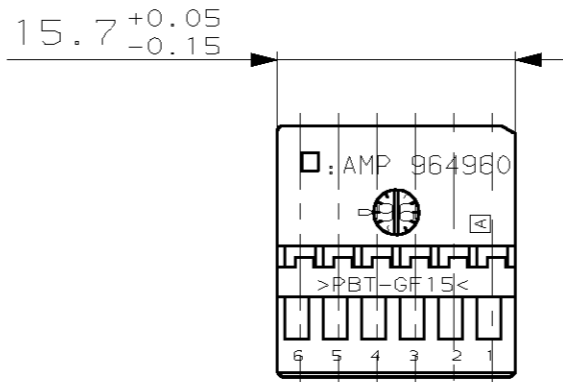
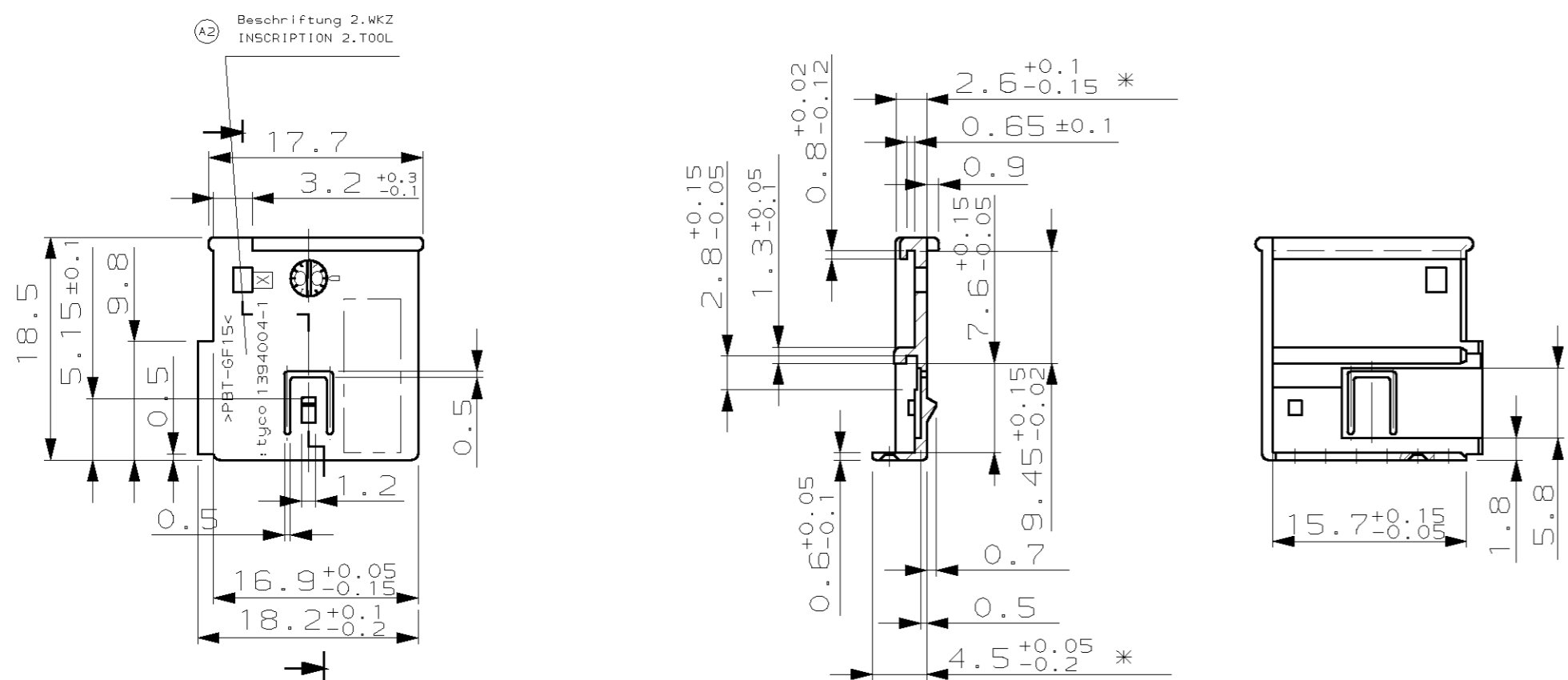
**THE DATASHEET OF**  
**1394005-1**



LOC	DIST	REVISIONS			
P	LTR	DESCRIPTION	DATE	DWN	APVD
A1	-	Zeichnung neu erstellt/ NEW DRAWING	07-JAN-00	GF	BK
A2	-	TOOL REPLACEMENT DESCRIPTION 1.TOOL AND 2.TOOL	02-NOV-04	GF	BL

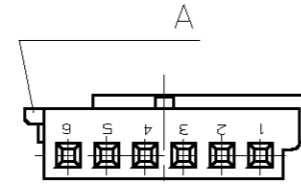
Pos. 1

Pos. 2



Kodierung Ansicht "A"

Kodierung A



NOTES

Bemerkungen

- \* FALLING IN MAX. 0.3 MM PERMITTED  
Verzug bis max. 0.3 mm zulaessig
- 1 MATING PART EXECUTION ACC. DRAWING 114-18063-085  
Gegenstecker mit Anschlussmassen nach Zeichnung 114-18063-085

ORDER-NO.	REV	COD	PART-NO.	REV	QTY	DESCRIPTION	MATERIAL	COLOUR	POS
Bestell-Nr.	REV	KOD	Teil-Nr.	REV	Stck	Benennung Einzelteil	Werkstoff	Farbe	POS
-	-	-	-	-	-	-	-	-	-
1394005-1	A	A	964960-1	A	1	MQ5 Buchsengehaeuse	PBT-GF	BLACK/schwarz	2
			1394004-1	A	1	Verrriegelungsdeckel	PBT-GF	BLACK/schwarz	1

THIS DRAWING IS A CONTROLLED DOCUMENT FOR AMP INCORPORATED. IT IS SUBJECT TO CHANGE AND THE CONTROLLING ENGINEERING ORGANIZATION SHOULD BE CONTACTED FOR THE LATEST REVISION. DIESES ZEICHNUNGS-DOKUMENT WIRD DURCH AMP INCORPORATED KONTROLLIERT. AENDERUNGEN, DIE DEN TECHNISCHEN FORTSCHRITT DIENEN, SIND VORBEHALTEN. DEN JEWELIGS LETZTKUENFTIGEN AENDERUNGSSTAND ERFAHREN SIE AUF ANFRAGE.

DIMENSIONS: DIMENSIONEN: mm

OTHERWISE SPECIFIED: ALLGEMEINTOLERANZEN  
n. ISO 8015  
n. ISO 2768 - mH - E  
n. DIN 16901 - 140

TOLERANCES UNLESS OTHERWISE SPECIFIED:  
0 PLC ±  
1 PLC ±  
2 PLC ±  
3 PLC ±

ANGLES/WINKEL #2°  
FINISH/OBERFLAECHE/FARBE

DWN: G.Fischer 07-JAN-00  
CHK: B.Kirsch 07-JAN-00  
APVD: -  
NAME: AMP Deutschland GmbH  
D - 63225 Langen  
PRODUCT SPEC: SOCKET HOUSING, 6 POSN., ASSY, MQ5  
PRODUCTSPEZ.: Buchsengehaeuse, 6 pol., ZSB, MQ5  
APPLICATION SPEC: -  
VERARBEITUNGSSPEZ.: -  
WEIGHT: -  
GEWICHT: -  
CUSTOMER DRAWING: /KUNDENZEICHNUNG  
MASSSTAB: 2:1  
BLATT: 1  
OF: 1  
VON: 1  
REV: A2

AMP 1471-9 REV 27JUN96

## Looking for pricing, stock, or lifecycle information?

Click below to explore more details on WIN SOURCE:

 [View 1394005-1](#) on WIN SOURCE

 [TE Connectivity](#) Information

## Optimize Your Supply Chain with WIN SOURCE Solutions

-  Global Sourcing Solution
-  Obsolete Management
-  Cost Control Management
-  Shortage Management
-  Alternative Solution
-  Excess Inventory Management