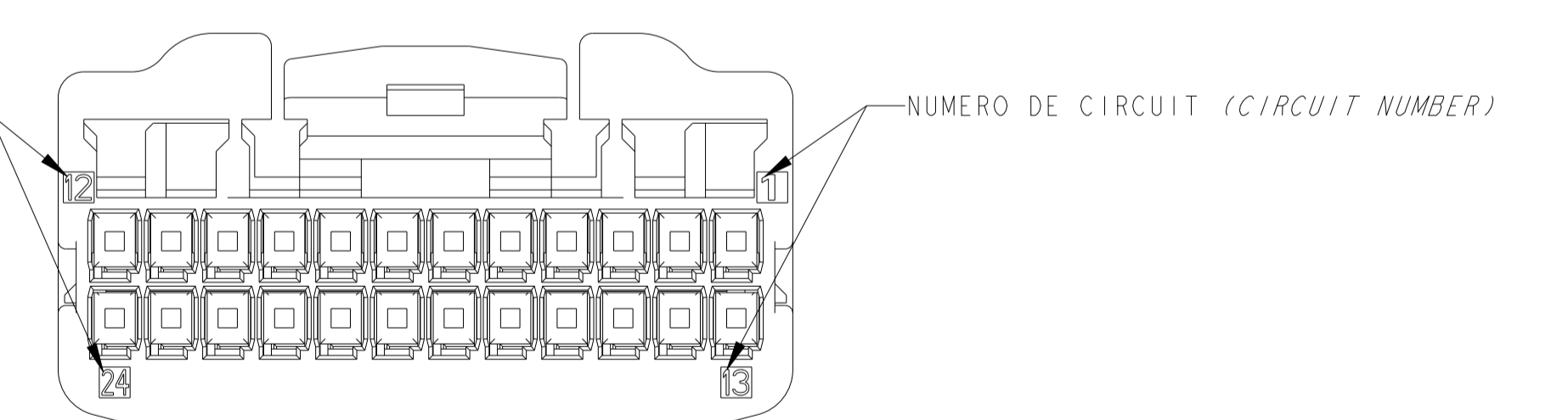
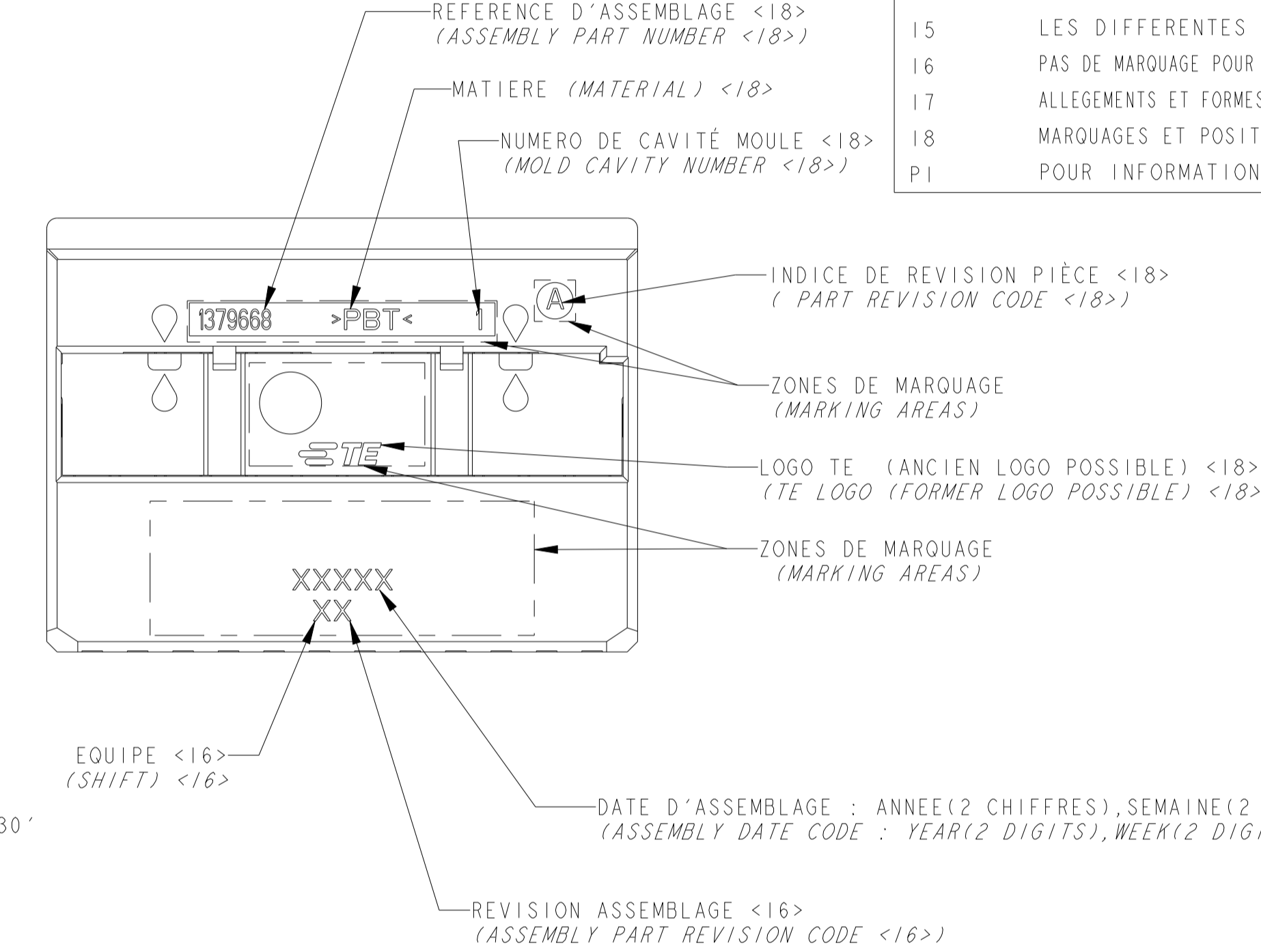
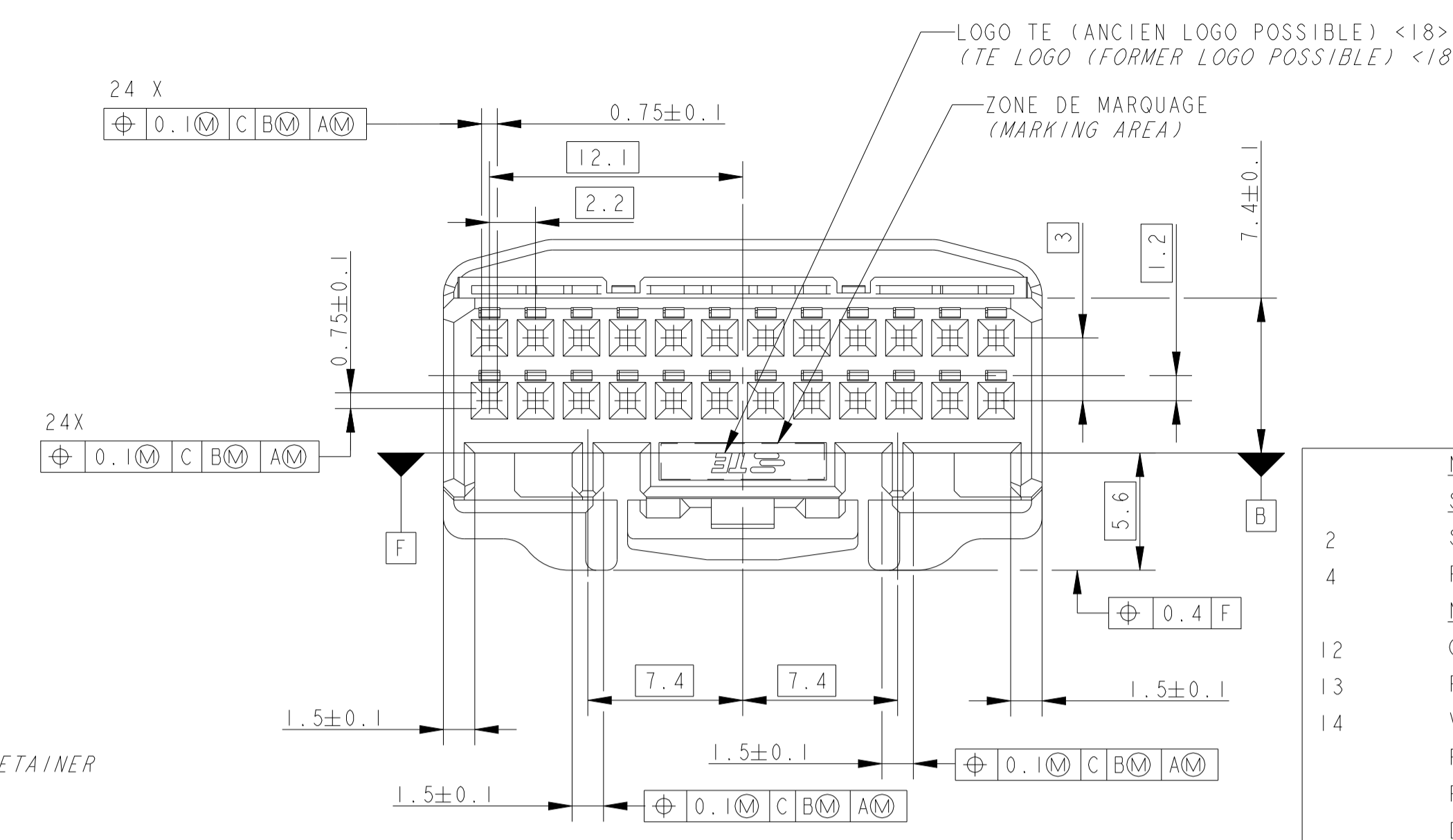
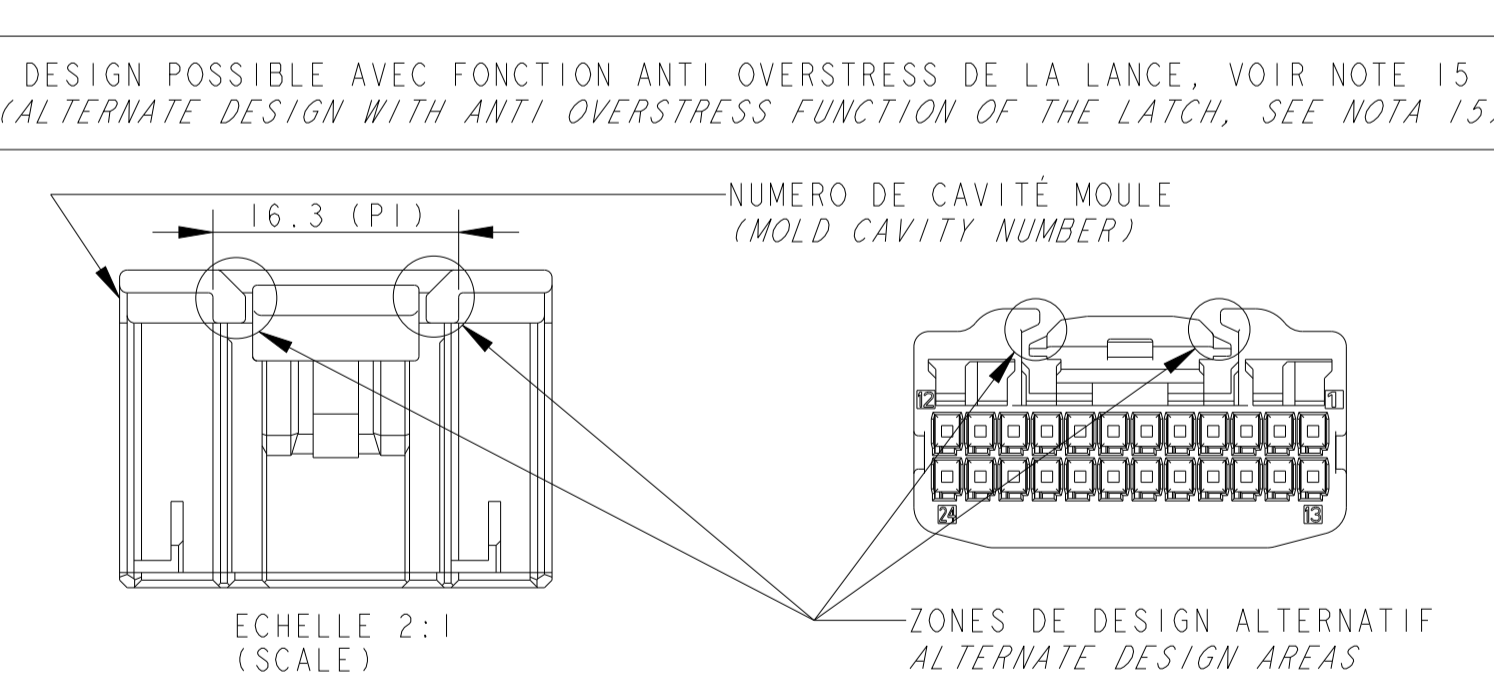
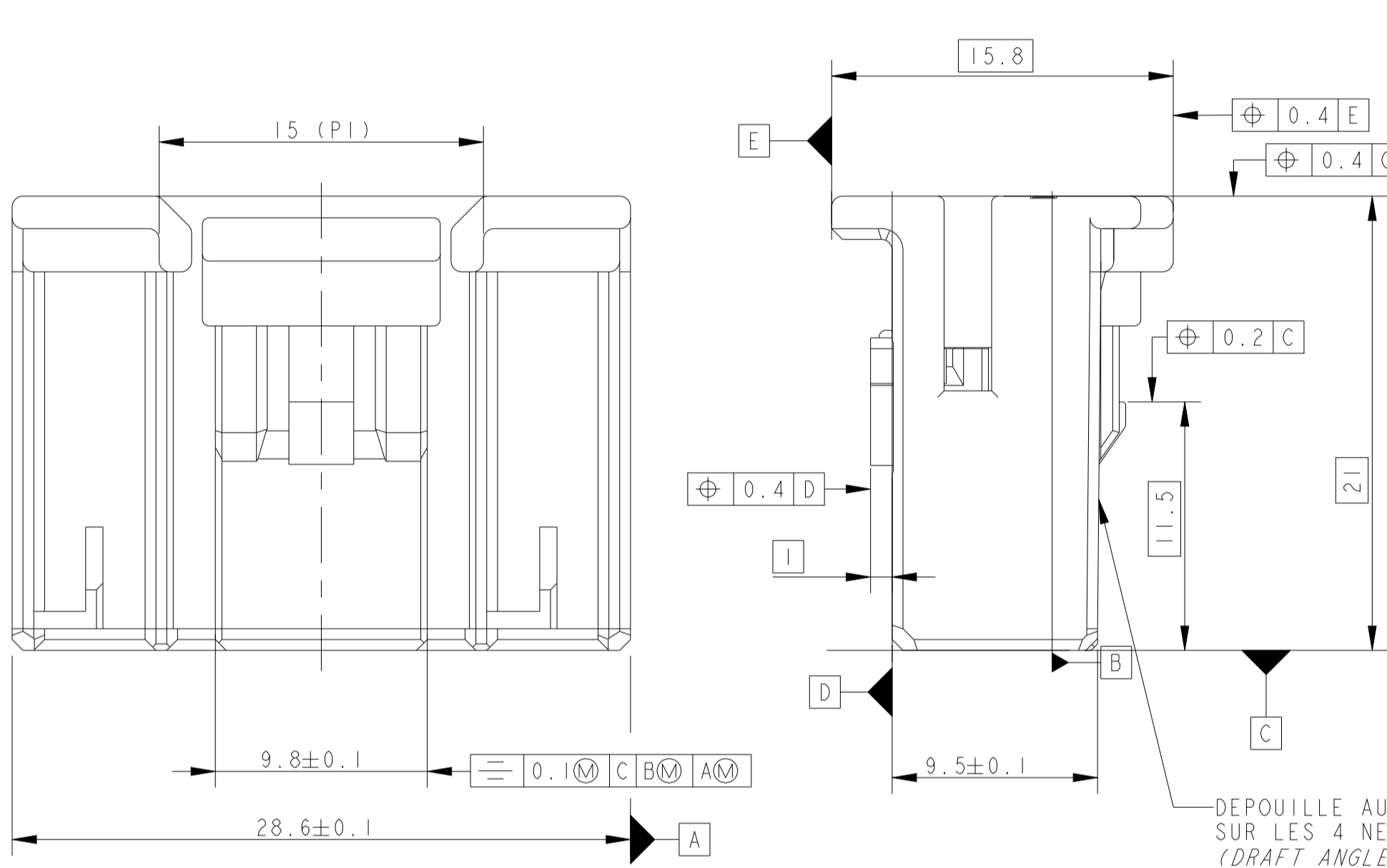
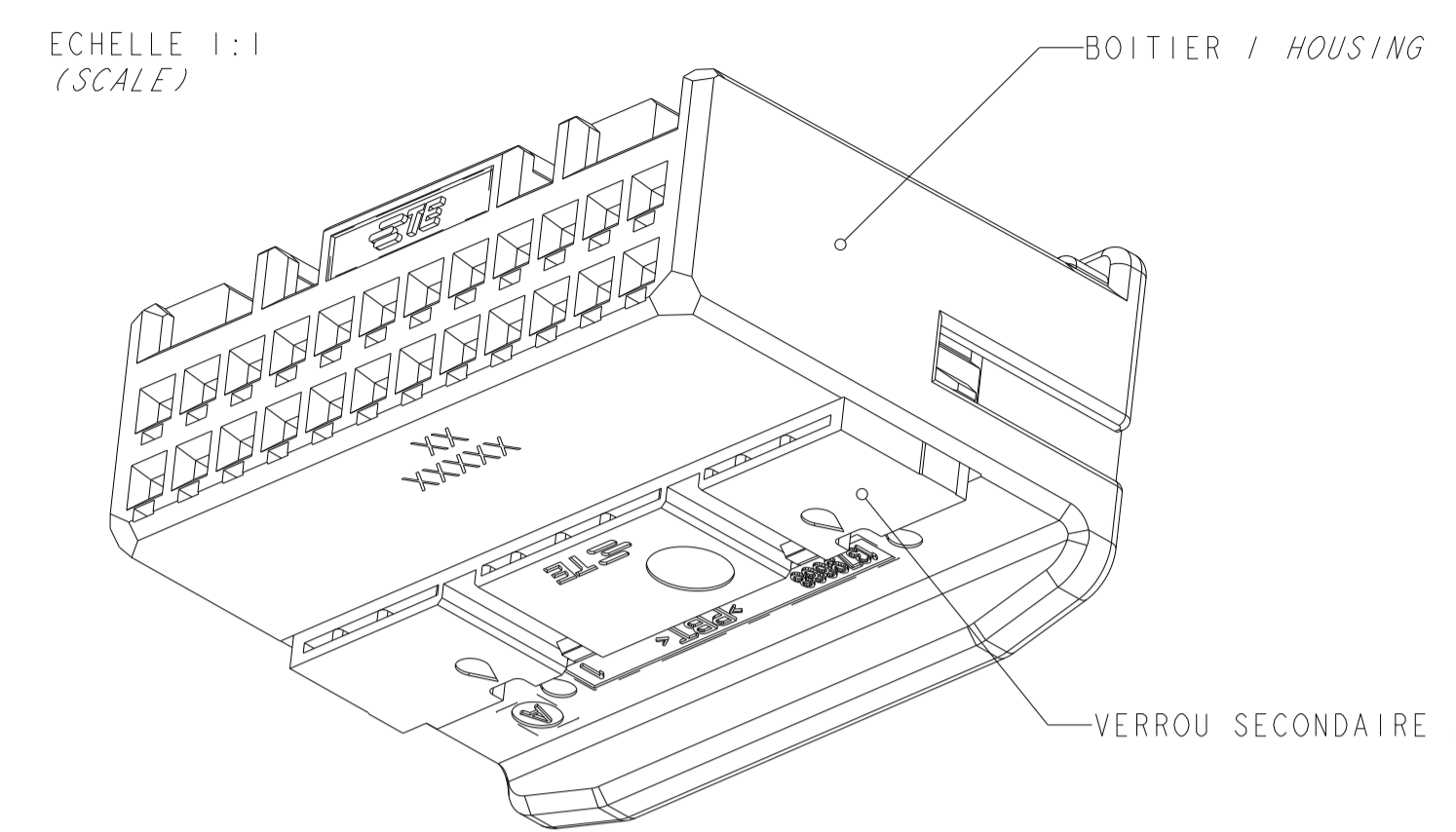
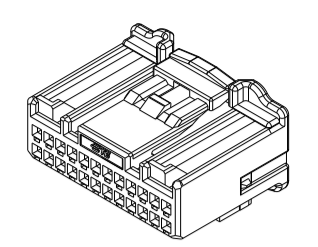




THE DATASHEET OF
1379668-5

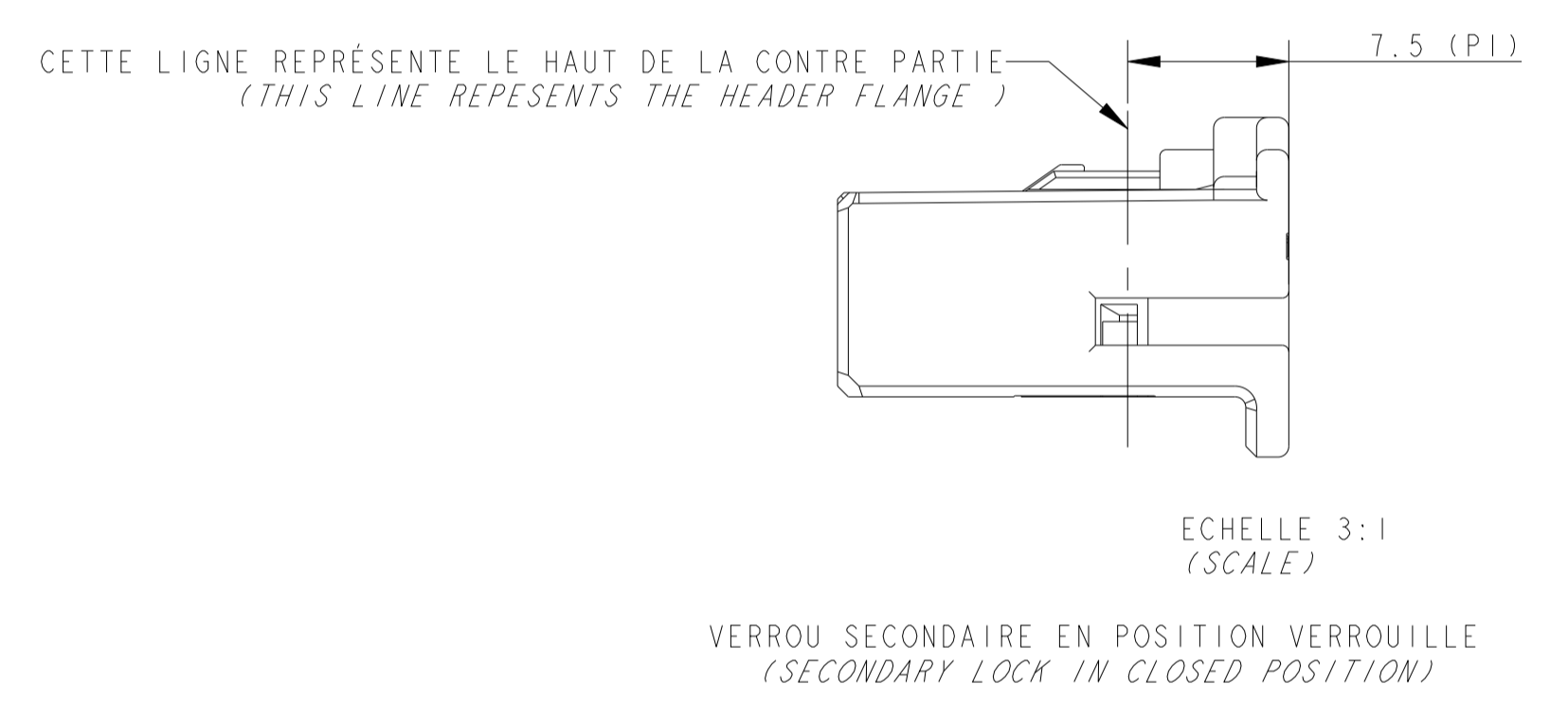


| LOC | DIST | REVISIONS | | | | | | |
|-----|------|-----------|-----|-----|---|-----------|-----|------|
| F | 00 | P | LTN | REV | DESCRIPTION | DATE | DWN | APVD |
| | | J | | | CHANGE PROCESS OF ASSEMBLY TRACEABILITY | 30OCT2015 | DB | XR |
| | | K | | | DRAWING CLARIFICATION FOR MARKINGS | 16FEB2017 | DB | XR |
| | | L | | | GREEN CODING ADDED | 4NOV2020 | HY | XR |
| | | M | | | PN 1674298-1 replace with PN 1123343-1 | 09JUN2022 | CS | XR |



NOTES : LES NOTES LOCALES SONT ENTRE <>>
 SPECIFICATIONS DE REFERENCE :
 SPECIFICATION TE : 108-15299
 PLAN D'INTERFACE TE 1379778
 NOTES COMPLEMENTAIRES
 12 CAHIER DE PRECONISATION : 411-15672
 13 REFERENCE REPRESENTEE : 1379668-1
 14 VERROU SECONDAIRE PREVERROUILLE (POSITION PREFERENTIELLE DE LIVRAISON). SI LE VERROU N'EST PAS DANS CETTE POSITION, SUIVRE LES INSTRUCTIONS DE LA NOTICE TECHNIQUE TE 411-15672 §8.2
 15 LES DIFFERENTES VERSIONS SONT LIVREES DE FACON ALEATOIRE
 16 PAS DE MARQUAGE POUR LES PIECES DIRECTEMENT ASSEMBLEES APRES MOULAGE
 17 ALLEGEMENTS ET FORMES COSMETIQUES PEUVENT DIFFERER D'UN MOULE A L'AUTRE
 18 MARQUAGES ET POSITIONS PEUVENT DIFFERER D'UN MOULE A L'AUTRE
 P1 POUR INFORMATION

APPLICABLE SPECIFICATION :
 TE SPECIFICATION (SEE BEFORE)
 TE INTERFACE DRAWING (SEE BEFORE)
 ADDITIONAL NOTES :
 INSTRUCTION SHEET : (SEE BEFORE)
 PART NUMBER SHOWN (SEE BEFORE)
 SECONDARY LOCK IN PRELOCKED POSITION (PREFERRED DELIVERY POSITION). IF SECONDARY LOCKING IS NOT IN THIS POSITION, FOLLOW INSTRUCTIONS OF TE SPECIFICATION 411-15672 §8.2
 THE DIFFERENT VERSIONS ARE DELIVERED SO RANDOM
 NO MARKING REQUIRED FOR THE PART MOLDING WITH DIRECT ASSEMBLY
 LIGHTENINGS (DIMENSION & LOCATION), COSMETIC SHAPES CAN DIFFER FROM ONE MOLD TO ANOTHER
 MARKING TYPE & LOCATION CAN DIFFER FROM ONE MOLD TO ANOTHER
 FOR REFERENCE ONLY



CONTACTS ASSOCIES LISTE NON EXHAUSTIVE (APPLIED CONTACTS NON EXHAUSTIVE LIST)

| REF TE / TE PN | FINITION (FINISH) | DESIGNATION (DESIGNATION) |
|----------------|---------------------------------|--|
| 1123343-2 | DORE (0.38µm) / GOLDED (0.38µm) | CLIP .635 (.635 CONTACT) 0.35 A 0.5 MM ² (SOMM) |
| 1801069-2 | DORE (0.8µm) / GOLDED (0.8µm) | CLIP .635 (.635 CONTACT) 0.35 A 0.5 MM ² (SOMM) |
| 1123343-1 | ETAME (TINNED) | CLIP .635 (.635 CONTACT) 0.35 A 0.5 MM ² (SOMM) |

| REF TE / TE PN | DESCRIPTION / DESCRIPTION | CODAGE / KEYING | MATIERE BOITIER - MATIERE VERROU SECONDAIRE / HOUSING MATERIAL - RETAINER MATERIAL | COULEUR BOITIER - COULEUR VERROU SECONDAIRE / HOUSING COLOR - RETAINER COLOR | REVISION ASSEMBLAGE / ASSEMBLY REVISION CODE |
|----------------|---|------------------|--|--|--|
| 1379668-5 | CONNECTEUR 24 VOIES / 24 WAYS CONNECTOR | NEUTRE / NEUTRAL | PBT-PBT / PBT-PBT | NATUREL-NATUREL / NATURAL-NATURAL | F |
| 1379668-4 | CONNECTEUR 24 VOIES / 24 WAYS CONNECTOR | 4 / 4 | PBT-PBT / PBT-PBT | VERT-NATUREL / GREEN-NATURAL | F |
| 1379668-2 | CONNECTEUR 24 VOIES / 24 WAYS CONNECTOR | 2 / 2 | PBT-PBT / PBT-PBT | GRIS-NATUREL / GREY-NATURAL | F |
| 1379668-1 | CONNECTEUR 24 VOIES / 24 WAYS CONNECTOR | 1 / 1 | PBT-PBT / PBT-PBT | NOIR-NATUREL / BLACK-NATURAL | F |

THIS DRAWING IS A CONTROLLED DOCUMENT. CE PLAN EST UN DOCUMENT CONTROLÉ PAR TOUTE ÉLECTRONIQUE. IL EST SPÉCIFIQUE À CE PRODUIT. CONTACTER LE SERVICE TECHNIQUE DE TICO ÉLECTRONIQUE POUR OBTENIR LA DERNIÈRE RÉVISION.

DIMENSIONS : mm

TOLERANCES UNLESS OTHERWISE SPECIFIED: (SUIVRE LE DE DÉCIMALES):
 0 P.L.C./DEC: ±0.2
 1 P.L.C./DEC: ±0.2
 2 P.L.C./DEC: ±0.2
 3 P.L.C./DEC: ±0.2
 4 P.L.C./DEC: ±0.2
 ANGLES: ±5°

FINISH / FINITION: N=A

OWN / DRESSINE: 01OCT2002
 B. DUPONT
 CHK. PROEFIE: 01OCT2002
 JP. PICAUD

APVD / APPROUVE: 01OCT2002
 JP. PICAUD

PRODUCT SPEC: SEE TABLE
 APPLICATION SPEC: SEE TABLE

WEIGHT / MASSE APPROX.: -

Customer Drawing / PLAN CLIENT

UNIFORMITÉ POUR REFERENCE

SCALE: 4:1

SHEET: 1 OF 2

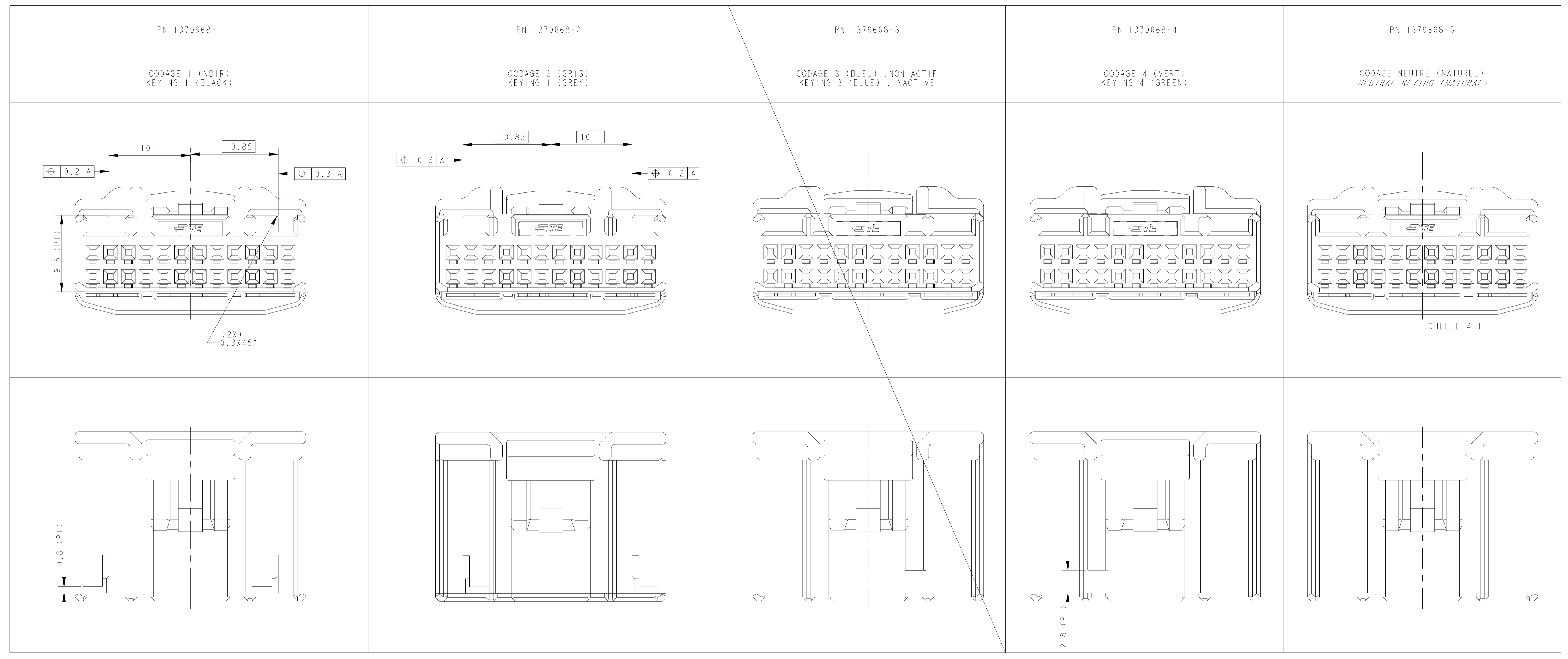
REV: M

TE Connectivity

025 TH 24 POS PLUG HOUSING

00779-1379668

| LOC | | DIST | | REVISIONS | | | |
|-----|-----|------|-------------|-----------|-----|------|--|
| P | LTN | REV | DESCRIPTION | DATE | DWN | APVD | |
| | | | SEE SHEET 1 | | | | |



| | | | | | | | |
|--|--|--|--|---|--|--|--|
| <p>THIS DRAWING IS A CONTROLLED DOCUMENT. CE PLAN EST UN DOCUMENT CONTRÔLÉ PAR TYSO ELECTRONICS - IL EST SENSIBLE À TOUTS CHANGEMENTS DE SERVICE TYSOING DE TYSO ELECTRONICS POUR OBTENIR LA DERNIÈRE RÉVISION.</p> | | <p>DWN / RESSINE: 01OCT2002 B. DUPONT CHK. PROJET: 01OCT2002 JP. PICAUD</p> | | <p>NAME: 025 TH 24 POS PLUG HOUSING</p> | | | |
| <p>TOLERANCES UNLESS OTHERWISE SPECIFIED: DIMENSIONS: mm 0 P.L.C./DEC: ±0.2 1 P.L.C./DEC: ±0.2 2 P.L.C./DEC: ±0.2 3 P.L.C./DEC: ±0.2 4 P.L.C./DEC: ±0.2 ANGLES: ±5° FINISH / FINITION: N°A</p> | | <p>TOLERANCES UNLESS OTHERWISE SPECIFIED: DIMENSIONS: mm 0 P.L.C./DEC: ±0.2 1 P.L.C./DEC: ±0.2 2 P.L.C./DEC: ±0.2 3 P.L.C./DEC: ±0.2 4 P.L.C./DEC: ±0.2 ANGLES: ±5° FINISH / FINITION: N°A</p> | | <p>APVD / APPROVE: 01OCT2002 JP. PICAUD PRODUCT SPEC: SEE TABLE SPEC. PRODUCT: SEE TABLE APPLICATION SPEC: SEE TABLE SPEC. APPLICATION: SEE TABLE WEIGHT: - MASSE APPROX.: -</p> | | <p>SIZE: A1 CAGE CODE: 1379668 DRAWING NO: 1379668 UNIFORMITY: /PLAN CLIENT FOUR REFERENCE: UNIFORMITY SCALE: 4:1 SHEET: 2 OF 2 FEUILLE: 2 DE 2 REV: M</p> | |

Looking for pricing, stock, or lifecycle information?

Click below to explore more details on WIN SOURCE:

 [View 1379668-5 on WIN SOURCE](#)

 [TE Connectivity](#) Information

Optimize Your Supply Chain with WIN SOURCE Solutions

-  Global Sourcing Solution
-  Obsolete Management
-  Cost Control Management
-  Shortage Management
-  Alternative Solution
-  Excess Inventory Management