



THE DATASHEET OF
1379217-2



THIS DRAWING IS UNPUBLISHED.
 DIFFUSION RESTREINTE

RELEASED FOR PUBLICATION
 LIBRE A LA DIFFUSION

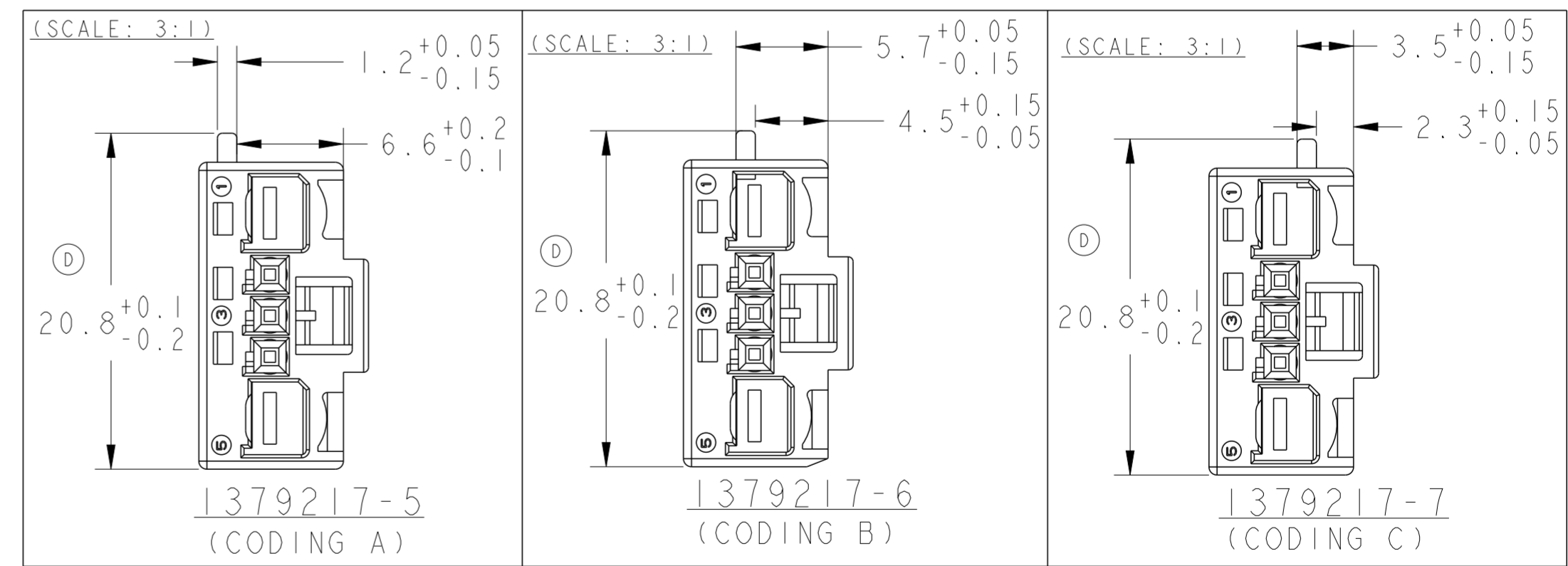
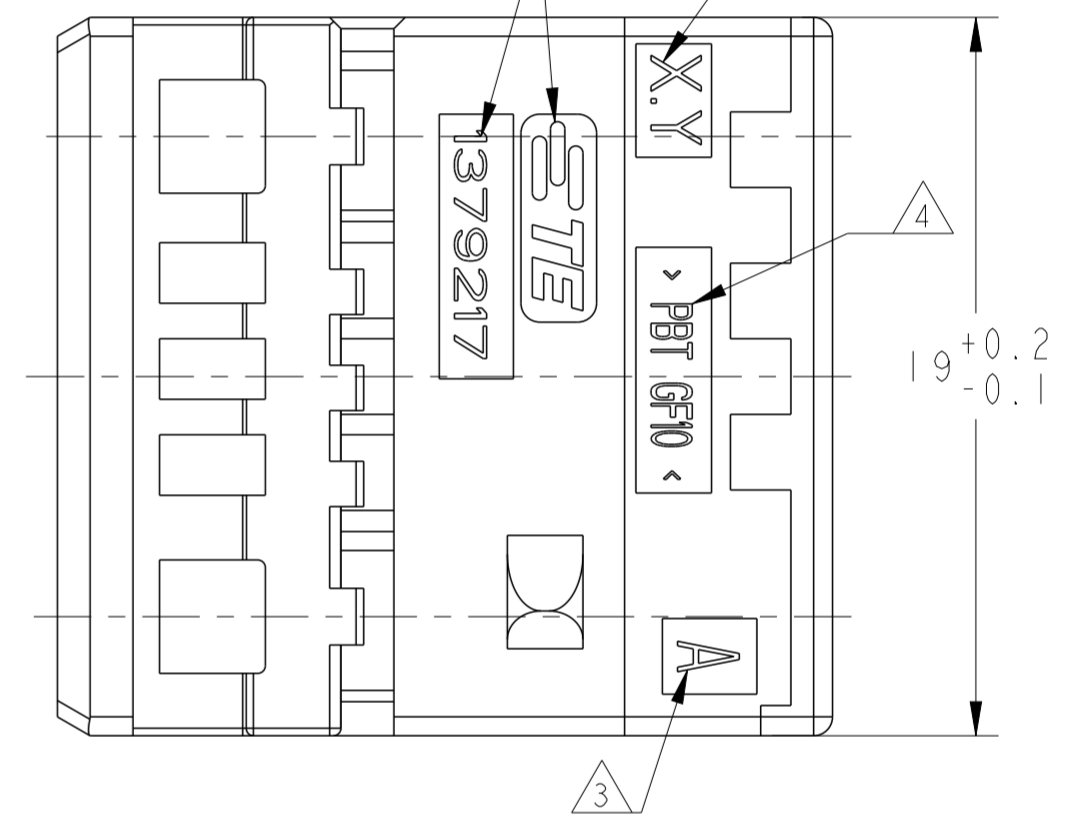
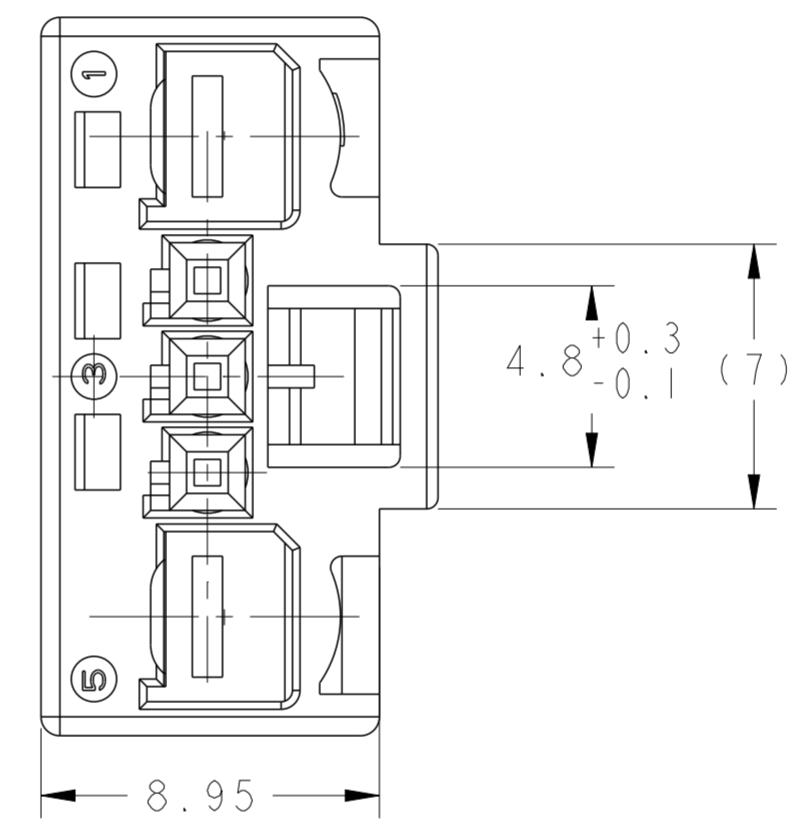
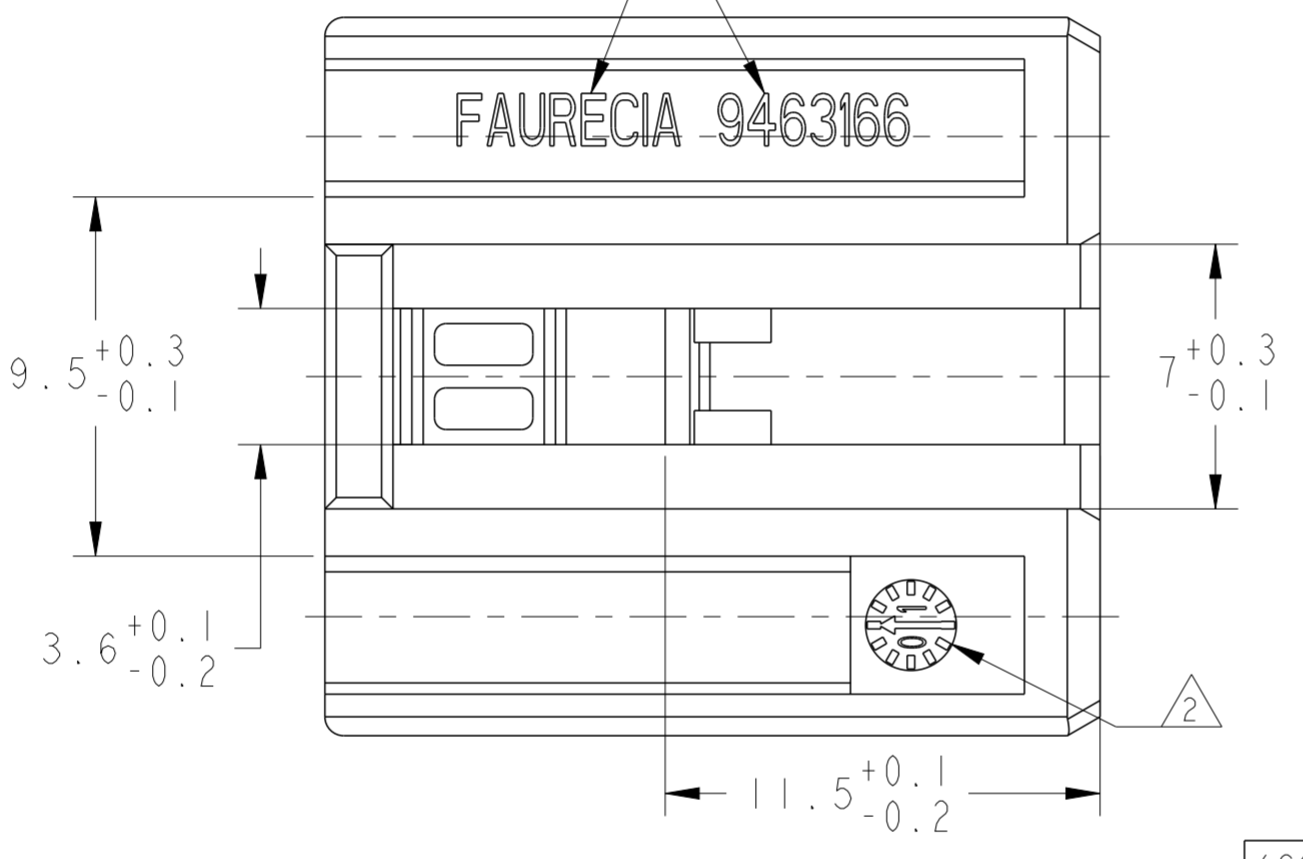
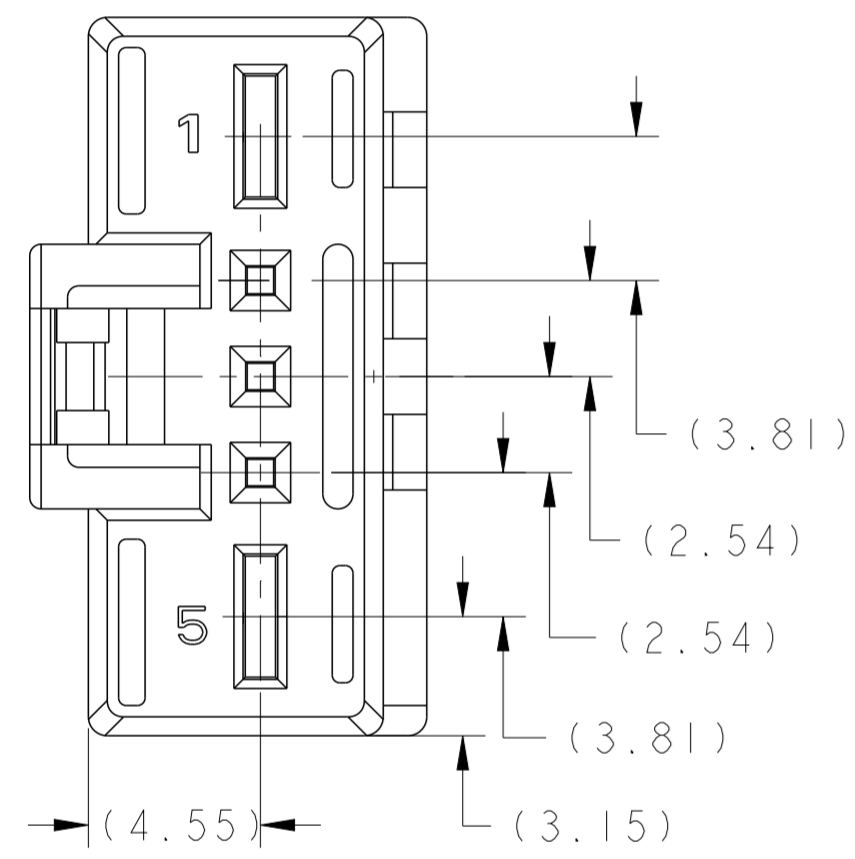
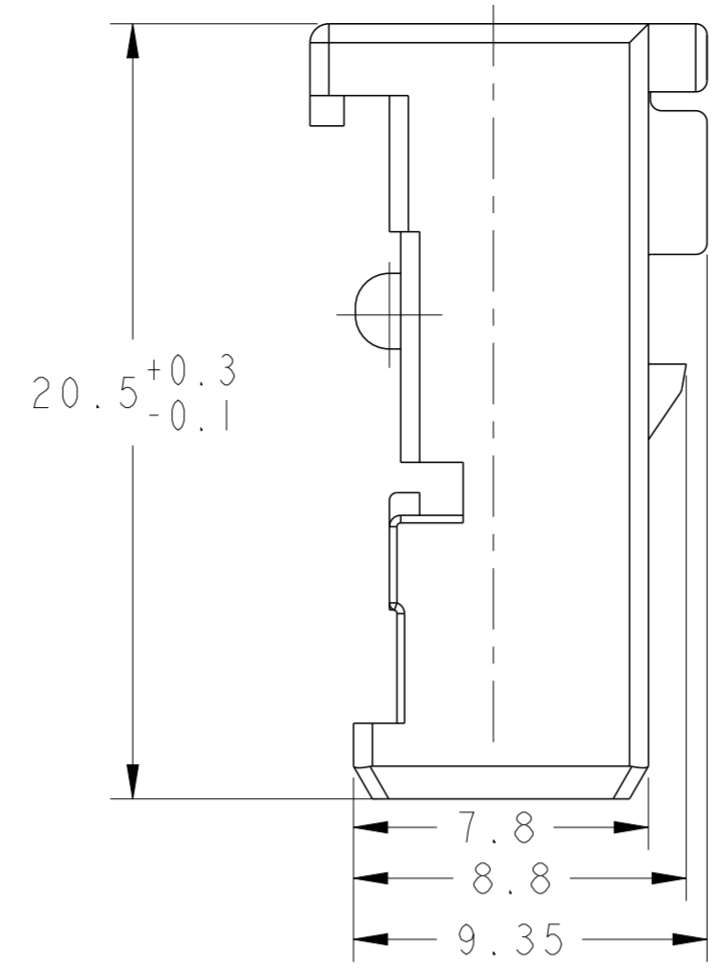
20

ALL RIGHTS RESERVED.
 TOUS DROITS RESERVES

© COPYRIGHT 20 BY -

REVISIONS					
P	LTR	DESCRIPTION MODIFICATIONS	DATE	DWN DESS.	APVD APP.
C		ADD THE NEW P/NS : 1379217-5/-6/-7	15DEC2004	NT.N	J.L
D		UP DATE THE DRAWING	17FEB2005	NT.N	J.L
D1		REVISED PER ECO-11-005150	20APR11	RK	HMR
D2		ECR-15-017891	14DEC2015	KCD	SA

- NOTES:
- 1 AREA FOR OPTIONAL CUSTOMER NAME & PART NUMBER
ZONE POUR NOM & REFERENCE CLIENT OPTIONNELS
 - 2 CODING DATE
DATE CODE
 - 3 REVISION STATUT OF THE MOLD
REVISION DU MOULE
 - 4 MATERIAL IDENTIFICATION
MARQUAGE DE MATIERE
 - 5 CAVITY MARKING
NUMERO D' EMPREINTE DU MOULE
 - 6 LOGO & P/N OF TE (AMP)
LOGO & REFERENCE DE TE (AMP)
 - 7 MUST BE USED WITH COVER PN 1379218-1 OR -2
DOIT ETRE UTILISE AVEC LE COUVERCLE 1379218-1 OU -2
 - 8 FOR THE CONNECTOR INTERFACE,SEE THE DRW OF P/N 208-15621
POUR L' INTERFACE DE CONNECTEUR,VOIR PLAN DE REF. 208-15621
 - 9 CAVITY 1 & 5 SUITABLE TO WIRE SIZE RANGE 0.75 TO 2.5 mm²
ALVEOLES 1 & 5 ADAPTEES AUX JAUGES DE FILS 0.75 A 2.5 mm²
 - 10 CAVITY 2,3,4 SUITABLE TO WIRE SIZE RANGE 0.25 TO 0.5 mm²
ALVEOLES 2,3,4 ADAPTEES AUX JAUGES DE FILS 0.25 A 0.5 mm²



1379217-7	-	BLUE (BLEU) ①	C	
1379217-6	-	WHITE (BLANC)	B	
1379217-5	-	BLACK (NOIR)	A	
1379217-4	-	WHITE (BLANC)	NEUTRAL (NEUTRE)	FAURECIA ①
1379217-3	-	BLACK (NOIR)		
1379217-2	9463166-2	WHITE (BLANC)		
1379217-1	9463166-1	BLACK (NOIR)		
TE P/N (REF. TE)	FAURECIA P/N (REF. FAURECIA)	COLOR (COULEUR)	CODING (DETROMPAGE)	PART NUMBER RESTRICTED ONLY TO (REFERENCE RESERVEE UNIQUEMENT A)

THIS DRAWING IS A CONTROLLED DOCUMENT.
 CE PLAN EST UN DOCUMENT CONTROLE PAR TYCO ELECTRONICS. IL EST SUSCEPTIBLE D'ETRE REVISE. CONTACTER LE SERVICE TECHNIQUE DE TYCO ELECTRONICS POUR OBTENIR LA DERNIERE REVISION.

DATE: 22FEB2001
 DWN/DESSINE: NT.NGUYEN
 CHK/VERIFIE: J.LAQUERBE
 DATE: 27JUN2001
 APVD/APPROUVE: S.KUGENER
 DATE: 27JUN2001

NAME/TITRE: **STE** TE Connectivity

PRODUCT SPEC: 108-15315
 SPEC. PRODUIT: 108-15315

APPLICATION SPEC: -
 SPEC. APPLICATION: -

WEIGHT/MASSE APPROX.: 1.80g

CUSTOMER DRAWING /PLAN CLIENT

SCALE/ECHELLE: 5:1

SHEET/FEUILLE: 1 OF 1

REV: D2

Looking for pricing, stock, or lifecycle information?

Click below to explore more details on WIN SOURCE:

 [View 1379217-2 on WIN SOURCE](#)

 [TE Connectivity](#) Information

Optimize Your Supply Chain with WIN SOURCE Solutions

-  Global Sourcing Solution
-  Obsolete Management
-  Cost Control Management
-  Shortage Management
-  Alternative Solution
-  Excess Inventory Management