


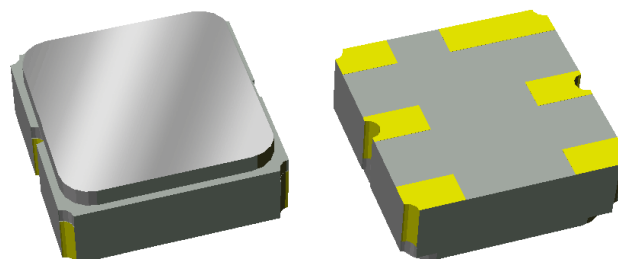


**THE DATASHEET OF**  
**856928**



## Features

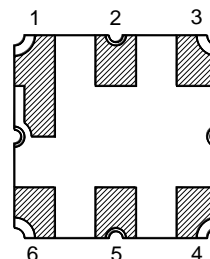
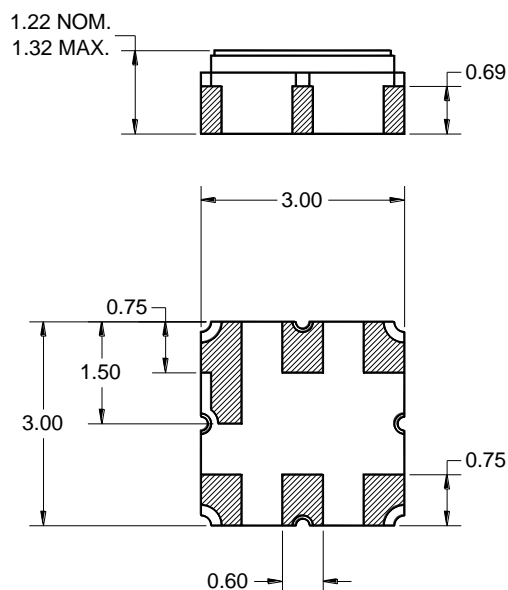
- For Base Stations applications
- Usable bandwidth 35 MHz
- Low loss
- Single-ended operation
- Ceramic Surface Mount Package (SMP)
- Small Size
- Hermetic
- RoHS compliant (2002/95/EC), Pb-free 



## Pin Configuration

Surface Mount 3.00 x 3.00 x 1.22 mm  
SMP-12

Bottom View



| Pin No. | Description |
|---------|-------------|
| 2       | Input       |
| 5       | Output      |
| 1,3,4,6 | Case ground |

Dimensions shown are nominal in millimeters  
 All tolerances are  $\pm 0.15$ mm except overall  
 length and width  $\pm 0.10$ mm

Body:  $Al_2O_3$  ceramic  
 Lid: Kovar, Ni plated  
 Terminations: Au plating 0.5 - 1.0 $\mu$ m,  
 over a 2 - 6 $\mu$ m Ni plating

**Electrical Specifications <sup>(1)(2)</sup>**

Operated Temperature Range: <sup>(3)</sup> -30 to +85 °C

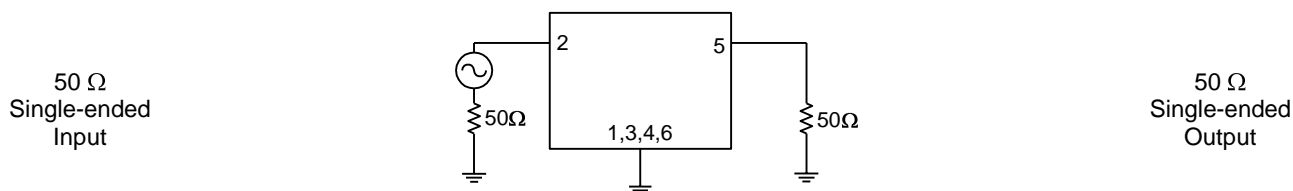
| Parameter <sup>(4)</sup>                              | Minimum | Typical <sup>(5)</sup> | Maximum | Unit   |
|---|---------|------------------------|---------|--------|
| <b>Center Frequency</b>                               | -       | 1445.4                 | -       | MHz    |
| <b>Maximum Insertion Loss</b><br>1427.9 – 1462.9 MHz  | -       | 1.25                   | 2.5     | dB     |
| <b>Amplitude Variation</b><br>1427.9 – 1462.9 MHz     | -       | 0.4                    | 1.2     | dB p-p |
| 1427.9 – 1462.9 MHz (Over any 5 MHz range)            | -       | 0.3                    | 0.8     | dB p-p |
| <b>VSWR</b><br>1427.9 – 1462.9 MHz                    | -       | 1.7                    | 2       | -      |
| <b>Phase Ripple</b><br>1427.9 – 1462.9 MHz            | -       | 12.0                   | 35      | deg    |
| <b>Absolute Delay</b><br>1427.9 – 1462.9 MHz          | -       | 14.0                   | 35      | ns     |
| <b>Group Delay Variation</b><br>1427.9 – 1462.9 MHz   | -       | 11.0                   | 30      | ns p-p |
| <b>Relative Attenuation <sup>(6)</sup></b>            |         |                        |         |        |
| 60 – 120 MHz  | 30      | 41.6                   | -       | dB     |
| 300 – 500 MHz   | 24      | 30.0                   | -       | dB     |
| 1240 – 1280 MHz                                       | 24      | 28.5                   | -       | dB     |
| 1390 – 1407.9 MHz                                     | 10      | 16.9                   | -       | dB     |
| 1495.9 – 1521 MHz                                     | 20      | 23.3                   | -       | dB     |
| 1600 – 1710 MHz                                       | 25      | 31.2                   | -       | dB     |
| 2140 – 2180 MHz                                       | 37      | 38.8                   | -       | dB     |
| 3200 – 4000 MHz                                       | 5       | 8.3                    | -       | dB     |
| <b>Source Impedance (single-ended) <sup>(7)</sup></b> | -       | 50                     | -       | Ω      |
| <b>Load Impedance (single-ended) <sup>(7)</sup></b>   | -       | 50                     | -       | Ω      |

**Notes:**

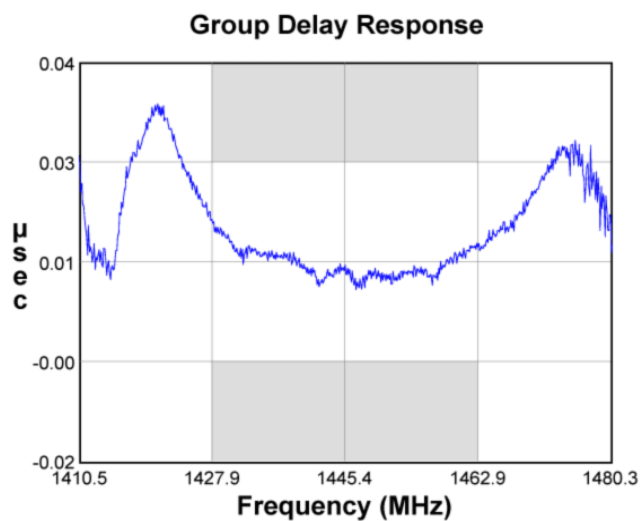
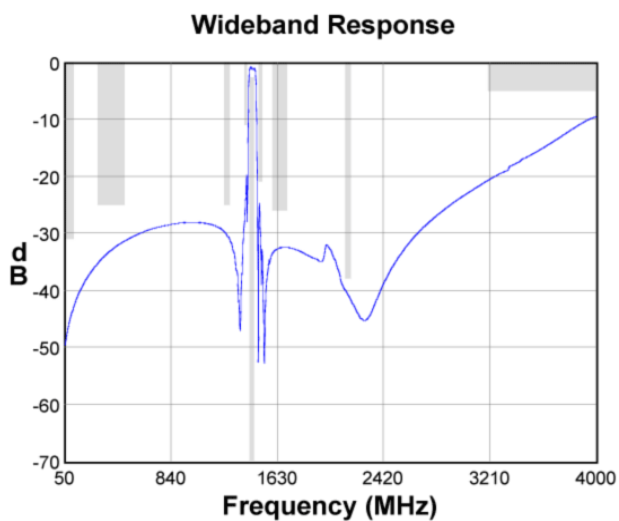
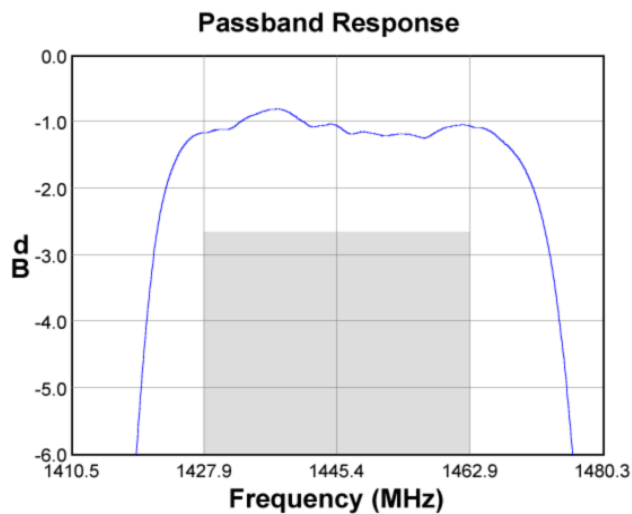
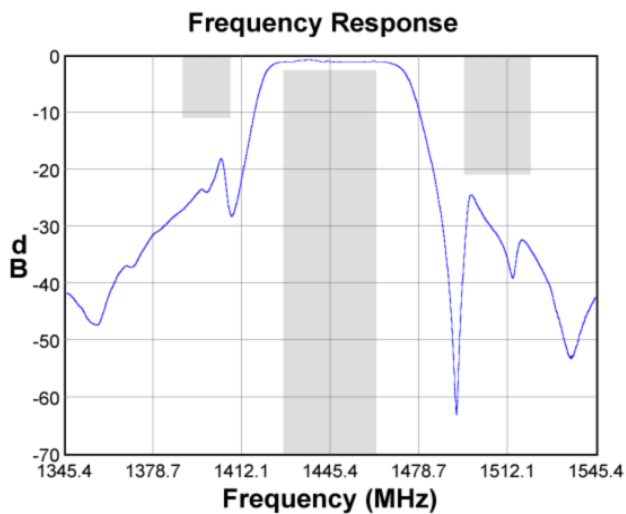
1. All target specifications are based on TriQuint test circuit shown below
2. All target specifications represent a design goal and not a guarantee until the design is finalized and a datasheet is issued
3. In production, devices will be tested at room temperature to a guardbanded specification to ensure electrical compliance over temperature
4. Electrical margin has been built into the design to account for the variations due to temperature drift and manufacturing tolerances
5. Typical values are based on average measurements at room temperature
6. Attenuation relative to Maximum Insertion Loss
7. This is the optimum impedance In order to achieve the performance shown

**Test Circuit:**

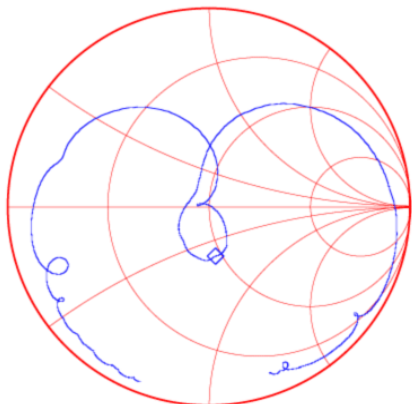
Actual matching values may vary due to PCB layout and parasitics



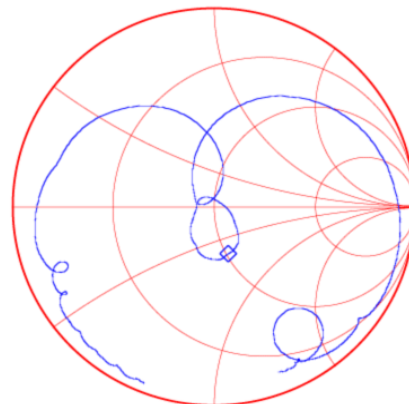
**Typical Performance (at +25°C)**



**Input Smith Chart**



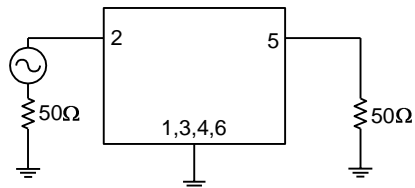
**Output Smith Chart**



### Matching Schematics

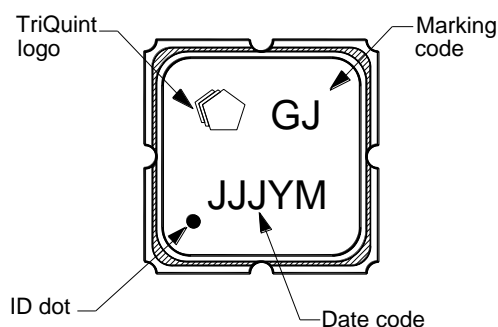
Actual matching values may vary due to PCB layout and parasitics

50  $\Omega$   
Single-ended  
Input



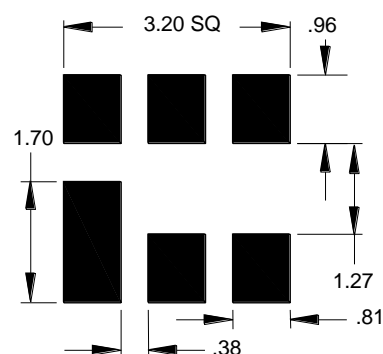
50  $\Omega$   
Single-ended  
Output

### Marking



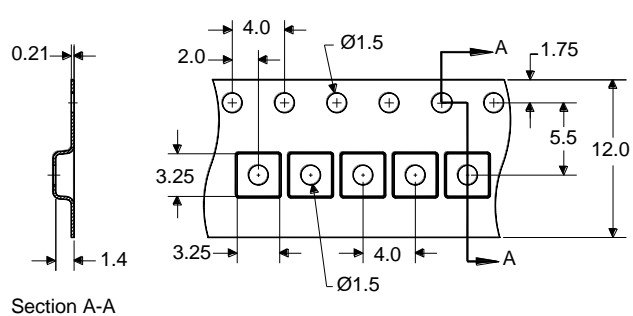
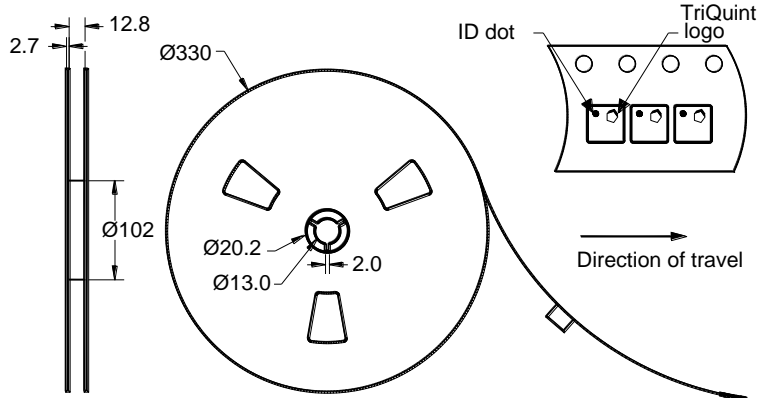
The date code consists of: day of the current year (Julian, 3 digits), Y = last digit of the year and M = manufacturing site code

### PCB Footprint



This footprint represents a recommendation only  
Dimensions shown are nominal in millimeters

### Tape and Reel



Dimensions shown are nominal in millimeters  
Packaging quantity: 5000 units/reel

**Maximum Ratings**


| Parameter                   | Symbol           | Minimum | Maximum | Unit |
|-----------------------------|------------------|---------|---------|------|
| Operating Temperature Range | T                | -30     | +85     | °C   |
| Storage Temperature Range   | T <sub>stg</sub> | -40     | +85     | °C   |
| Input Power <sup>(1)</sup>  | P <sub>in</sub>  | -       | +22     | dBm  |

**Note:**


1. Input Power is targeted for an applied CW modulated RF signal at 55 °C for 125 hours

**Important Notes**

**Warnings**

- Electrostatic Sensitive Device (ESD) 
- Avoid ultrasonic exposure

**RoHS Compliance**

- This product complies with EU directive 2002/95/EC (RoHS) 

**Solderability**

- Compatible with JEDEC J-STD-020C **Pb-free** process, **260°C** peak reflow temperature

**Links to Additional Technical Information**

[PCB Layout Tips](#)

[Qualification Flowchart](#)

[Soldering Profile](#)

[S-Parameters](#)

[RoHS Information](#)

[Other Technical Information](#)

TriQuint's liability is limited only to the Surface Acoustic Wave (SAW) component(s) described in this data sheet. TriQuint does not accept any liability for applications, processes, circuits or assemblies, which are implemented using any TriQuint component described in this data sheet.

**Contact Information**




PO Box 609501  
Orlando, FL 32860-9501  
USA

Phone: +1 (407) 886-8860  
Fax: +1 (407) 886-7061  
Email: [info-product@tqs.com](mailto:info-product@tqs.com)  
Web: [www.triquint.com](http://www.triquint.com)

Or contact one of our worldwide  
Network of [sales offices](#),  
[Representatives or distributors](#)

## Looking for pricing, stock, or lifecycle information?

Click below to explore more details on WIN SOURCE:

 [View 856928 on WIN SOURCE](#)

 [Qorvo US Inc. Information](#)

## Optimize Your Supply Chain with WIN SOURCE Solutions

-  Global Sourcing Solution
-  Obsolete Management
-  Cost Control Management
-  Shortage Management
-  Alternative Solution
-  Excess Inventory Management