



**THE DATASHEET OF  
0469911012**



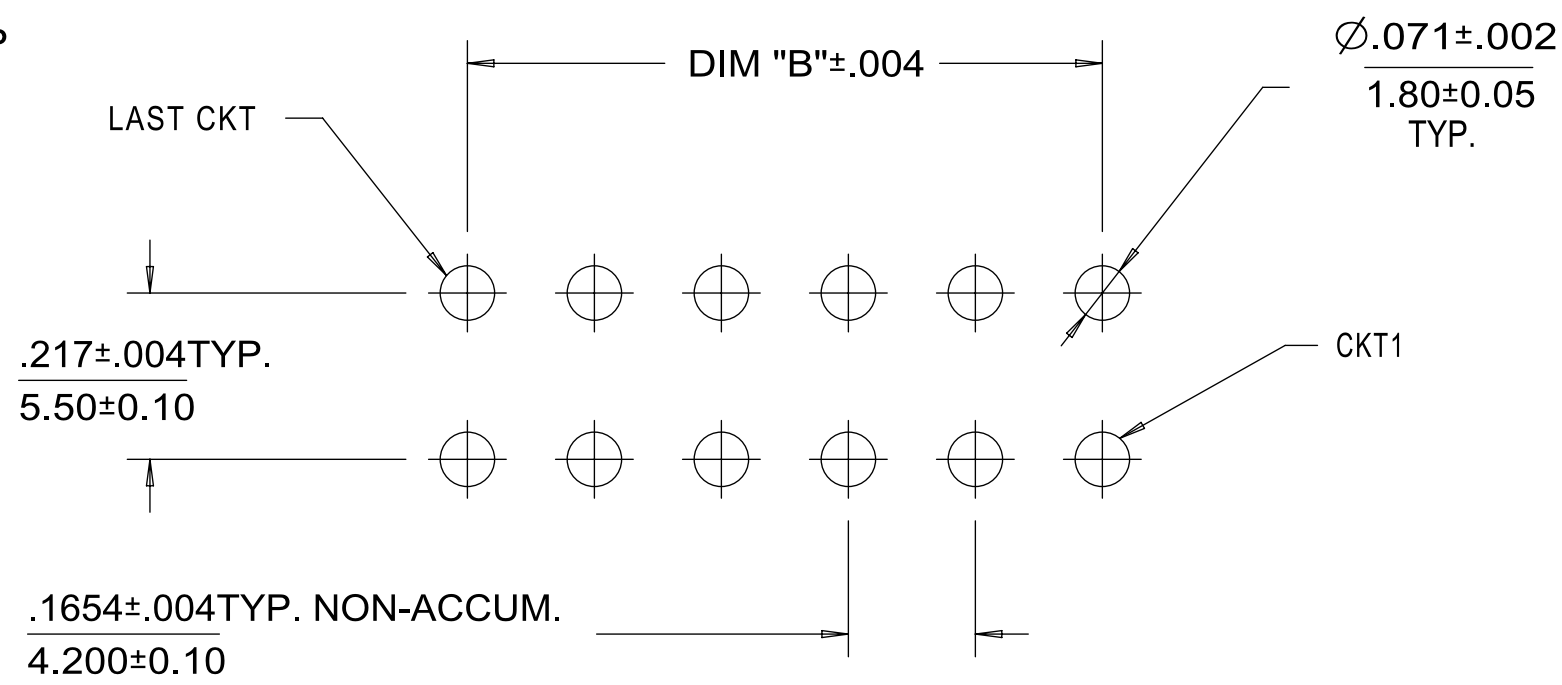
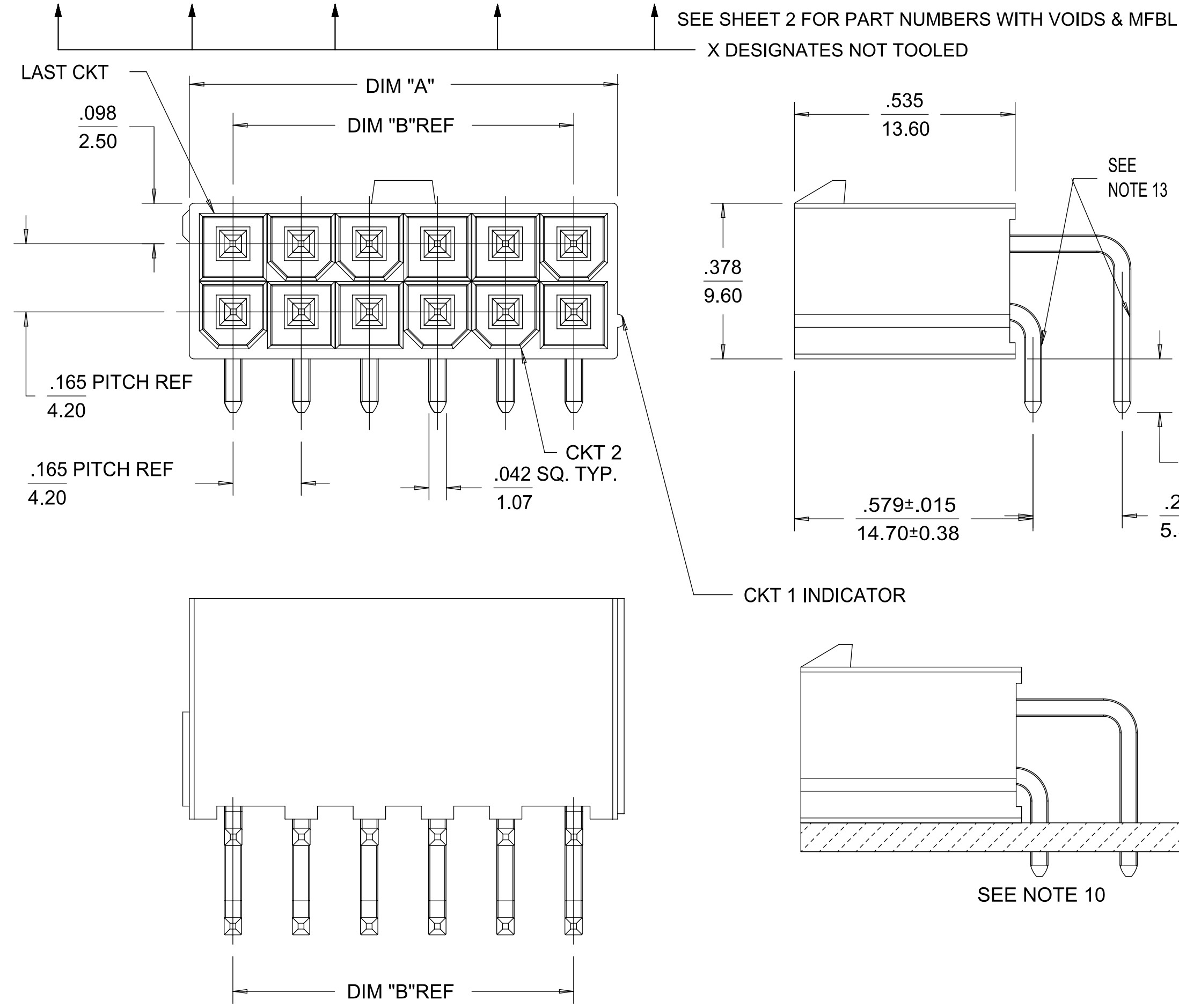
COLOR = BLACK

COLOR = NATURAL

NOTES:

- MATERIAL:  
HOUSING - LIQUID CRYSTAL POLYMER (LCP), COLOR: SEE CHART.  
TERMINAL - BRASS
- TERMINAL PLATING: TIN = .000100/0.00254 MATTE TIN OVER  
.000050/0.00127 NICKEL OVERALL  
GOLD= .000030/0.00076 MIN. SELECT GOLD OVER  
.000100/0.00254 MIN. SELECT MATTE TIN OVER  
.000050/0.00127 MIN NICKEL OVERALL
- PRODUCT SPECIFICATION: PS-5556-001 OR PS-45750-001.
- PACKAGING SPECIFICATION: TRAY PACKED PER PK-5569-003 OR  
TAPE AND REEL PACKAGED PER PK-46991-001.
- PART MATES WITH MINIFIT JR RECEPTACLE SERIES 5557
- DISCOLORIZATION IN THE BANDOLIER CARRIER AREA OF THE PIN IS  
INHERENT TO THE PLATING PROCESS AND IS DUE TO THE MASKING EFFECT  
OF THE CARRIER. THIS DISCOLORIZATION IS A NON-FUNCTIONAL AREA OF  
THE PIN AND WILL NOT AFFECT THE PERFORMANCE OF THE HEADER ASSEMBLY.
- CONNECTORS ARE NOT TO BE MATED OR UNMATED WHILE CIRCUITS ARE LIVE.
- PARTS ARE NOT DESIGNED FOR CURRENT SHARING.
- PART IS INTENDED FOR PIN IN PASTE REFLOW SOLDER ONLY.
- TO AVOID INTERFERENCE BETWEEN THE RECEPTACLE AND PCB. HEADER MUST  
BE PLACED AT THE EDGE OF PCB AS SHOWN.
- PIN RETENTION IN HOUSING IS 2.2 LBS/1 KG MIN. BOTH  
DIRECTIONS FOR TIN PLATING.  
PIN RETENTION IN HOUSING IS 1.0 LBS/0.45 KG MIN. BOTH  
DIRECTIONS FOR GOLD PLATING.
- THIS PART CONFORMS TO CLASS B REQUIREMENTS OF COSMETIC  
SPECIFICATION PS-45499-002.
- FORMING MARKS ON PINS ARE ACCEPTABLE.
- CIRCUITS SHOWN PROVIDE THE MATE-FIRST/BREAK-LAST FEATURE.  
SEE CHART ON SHEET 2 FOR SPECIFIC CIRCUIT LOCATIONS.
- TEXT ON PART IS FOR REFERENCE ONLY. TEXT AND TEXT LOCATION MAY VARY DEPENDING ON  
PART NUMBER AND/OR TOOL.

H	CKT SIZE	TIN PLATING		GOLD PLATING		TIN PLATING	DIM "A"	DIM "B"
		TRAY PACK MATERIAL NUMBER	TAPE & REEL MATERIAL NUMBER	TRAY PACK MATERIAL NUMBER	TAPE & REEL MATERIAL NUMBER			
	4	46991-1004	46991-4004 X	46991-2004	46991-3004		.38/9.6	.165/4.20
	6	46991-1006 X	46991-4006 X	46991-2006 X	46991-3006		.54/13.8	.331/8.40
	8	46991-1008	46991-4008	46991-2008	46991-3008		.71/18.0	.496/12.60
	10	46991-1010	46991-4010 X	46991-2010 X	46991-3010	X	.87/22.2	.661/16.80
	12	46991-1012 X	46991-4012	46991-2012 X	46991-3012		1.04/26.4	.827/21.00
	14	X 46991-1014	X 46991-4014 X	46991-2014 X	46991-3014		1.21/30.6	.992/25.20
	16	X 46991-1016	X 46991-4016 X	46991-2016 X	46991-3016		1.37/34.8	1.160/29.40
	18	X 46991-1018	X 46991-4018 X	46991-2018 X	46991-3018		1.54/39.0	1.323/33.60
	20	X 46991-1020	X 46991-4020 X	46991-2020 X	46991-3020		1.70/43.2	1.488/37.80
	22	X 46991-1022	X 46991-4022 X	46991-2022 X	46991-3022		1.87/47.4	1.654/42.00
	24	46991-1024	46991-4024 X	46991-2024 X	46991-3024		2.03/51.6	1.819/46.20



SYMBOLS	THIS DRAWING CONTAINS INFORMATION THAT IS PROPRIETARY TO MOLEX ELECTRONIC TECHNOLOGIES, LLC AND SHOULD NOT BE USED WITHOUT WRITTEN PERMISSION			
	DIMENSION UNITS	SCALE	CURRENT REV/DESC: ADD 46991-5003	
▽ = 0	IN/MM	4:1	EC NO: 641577	
▽ = 0	GENERAL TOLERANCES (UNLESS SPECIFIED)			
▽ = 0		MM	INCH	DRWN: LSCHWALLER 2020/07/15
▽ = 0	4 PLACES	±	±	CHK'D: DSTEIER 2020/07/22
▽ = 0	3 PLACES	±	± 0.15	APPR: FSMITH 2020/08/07
▽ = 0	2 PLACES	± 0.25	± 0.1	INITIAL REVISION:
▽ = 0	1 PLACE	± 0.38	±	DRWN: JKLOSTERMEIE 2008/12/19
▽ = 0	0 PLACES	±	±	APPR: FSMITH 2008/12/15
▽ = 0	ANGULAR TOL	± 0.5°		THIRD ANGLE PROJECTION
▽ = 0	DRAFT WHERE APPLICABLE MUST REMAIN WITHIN DIMENSIONS			DRAWING SERIES
				C-SIZE 46991

DOCUMENT NUMBER				DOC TYPE	DOC PART	REVISION
SD-46991-001				PSD	000	C11
MATERIAL NUMBER		CUSTOMER		SHEET NUMBER		
SEE CHART		GENERAL MARKET		1 OF 2		



## Looking for pricing, stock, or lifecycle information?

Click below to explore more details on WIN SOURCE:

 [View 0469911012 on WIN SOURCE](#)

 [Molex, LLC Information](#)

## Optimize Your Supply Chain with WIN SOURCE Solutions

-  Global Sourcing Solution
-  Obsolete Management
-  Cost Control Management
-  Shortage Management
-  Alternative Solution
-  Excess Inventory Management