



**THE DATASHEET OF
0462070104**





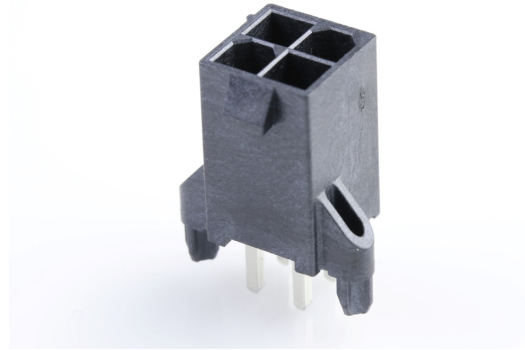
Part Number : [462070104](#)

Product Description : 4.20mm Pitch, Mini-Fit Jr. Reflow Solder Capable Header, Dual Row, Vertical, 4 Circuits, 2.36mm PCB Thickness, with PCB Pegs, LCP Housing, with Tin (Sn) Over Nickel (Ni) Plating, Glow-Wire Capable, Tray

Series Number : 46207

Status : Active

Product Category : PCB Headers and Receptacles



Documents & Resources

Drawings

[462070104_sd.pdf](#)

[PK-46207-001-000.pdf](#)

3D Models and Design Files

[462070104_stp.zip](#)

[SYM-46207-0004-001.zip](#)

Specifications

[PS-5556-004-001.pdf](#)

[55560004-PS-CH-000.pdf](#)

[55560004-PS-ES-000.pdf](#)

[55560004-PS-SK-000.pdf](#)

[PS-45750-001-001.pdf](#)

Product Environment Compliance

Compliance

GADSL/IMDS	Not Relevant
China RoHS	
EU ELV	Not Relevant
Low-Halogen Status	Low-Halogen per IEC 61249-2-21
REACH SVHC	Not Contained per D(2024)6225-DC (07 Nov 2024)
EU RoHS	Compliant per EU 2015/863

[Multiple Part Product Compliance Statements](#)

- Eu RoHS
- REACH SVHC
- Low-Halogen

Multiple Part Industry Compliance Documents

- IPC 1752A Class C
- IPC 1752A Class D
- Molex Product Compliance Declaration
- IEC-62474
- chemSHERPA (xml)

EU RoHS Certificate of Compliance

Part Details

General

Status	Active
Category	PCB Headers and Receptacles
Series	46207
Description	4.20mm Pitch, Mini-Fit Jr. Reflow Solder Capable Header, Dual Row, Vertical, 4 Circuits, 2.36mm PCB Thickness, with PCB Pegs, LCP Housing, with Tin (Sn) Over Nickel (Ni) Plating, Glow-Wire Capable, Tray
Application	Board-to-Board, Power, Wire-to-Board
Comments	Current for wire-to-wire applications = 13.0A max. per circuit; Current for wire-to-board applications = 9.0A max. per circuit
Component Type	PCB Header
Product Name	Mini-Fit Jr.
UPC	800756741185

Agency

CSA	LR19980
UL	E29179

Electrical

Current - Maximum per Contact	13.0A
Voltage - Maximum	600V AC (RMS)/DC

Physical

Breakaway	No
Circuits (Loaded)	4
Circuits (maximum)	4
Color - Resin	Black
Durability (mating cycles max)	30
First Mate / Last Break	No
Flammability	94V-0
Glow-Wire Capable	Yes
Guide to Mating Part	No
Lock to Mating Part	Yes
Material - Metal	Brass
Material - Plating Mating	Matte Tin
Material - Plating Termination	Matte Tin
Material - Resin	High Temperature Thermoplastic
Net Weight	1.743/g
Number of Rows	2
Orientation	Vertical
Packaging Type	Tray
PC Tail Length	4.46mm
PCB Locator	Yes
PCB Retention	Yes
PCB Thickness - Recommended	2.36mm
Pitch - Mating Interface	4.20mm
Pitch - Termination Interface	4.20mm
Polarized to Mating Part	Yes
Polarized to PCB	Yes
Shrouded	Fully
Stackable	No
Temperature Range - Operating	-40° to +105°C
Termination Interface Style	Through Hole

Solder Process Data

Max-Duration	30
--------------	----

Lead-Free Process Capability	SMC&WAVE
Max-Cycle	3
Max-Temp	265



Mates With / Use With

Mates with Part(s)

Description	Part Number
Mini-Fit TPA2 and Mini-Fit Sigma Dual Row Receptacle Housings	<u>172708</u>
Mini-Fit Jr. Receptacle Housings	<u>5557</u>

Looking for pricing, stock, or lifecycle information?

Click below to explore more details on WIN SOURCE:

-  [View 0462070104 on WIN SOURCE](#)
-  [Molex, LLC Information](#)

Optimize Your Supply Chain with WIN SOURCE Solutions

-  Global Sourcing Solution
-  Obsolete Management
-  Cost Control Management
-  Shortage Management
-  Alternative Solution
-  Excess Inventory Management