



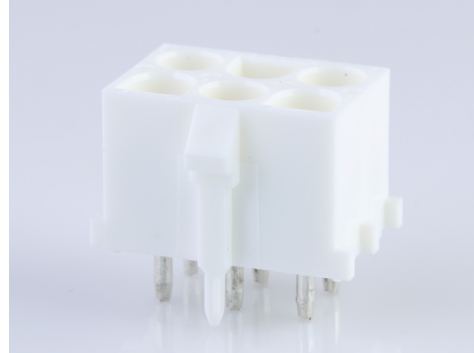
Part Number : [432550139](#)

Product Description : 6.35mm Pitch MLX Power Connector Header, 2.13mm Contact Diameter, Vertical, with Plastic Polarizing Peg, 6 Circuits, Lead-Free, Natural

Series Number : 43255

Status : Active

Product Category : PCB Headers and Receptacles



Documents & Resources

Drawings

[432550139_sd.pdf](#)

[PK-43255-001-001.pdf](#)

[PK-43255-003-001.pdf](#)

3D Models and Design Files


[432550139_stp.zip](#)

Specifications

[PSX-42002-0001-001.pdf](#)

Product Environment Compliance

Compliance

GADSL/IMDS	Not Relevant
China RoHS	
EU ELV	Not Relevant
Low-Halogen Status	Low-Halogen per IEC 61249-2-21
REACH SVHC	Not Contained per D(2024)6225-DC (07 Nov 2024)
EU RoHS	Compliant per EU 2015/863

[Multiple Part Product Compliance Statements](#)

- Eu RoHS
- REACH SVHC
- Low-Halogen

[Multiple Part Industry Compliance Documents](#)

- IPC 1752A Class C
- IPC 1752A Class D
- Molex Product Compliance Declaration
- IEC-62474
- chemSHERPA (xml)

EU RoHS Certificate of Compliance

Part Details

General

Status	Active
Category	PCB Headers and Receptacles
Series	43255
Description	6.35mm Pitch MLX Power Connector Header, 2.13mm Contact Diameter, Vertical, with Plastic Polarizing Peg, 6 Circuits, Lead-Free, Natural
Application	Board-to-Board, Power, Wire-to-Board
Comments	High Vibration Application
Component Type	PCB Header
Product Name	MLX
UPC	800754860390

Agency

CSA	LR19980
UL	E29179

Electrical

Current - Maximum per Contact	20.0A, 9.0A
Voltage - Maximum	600V

Physical

Breakaway	No
Circuits (Loaded)	6
Circuits (maximum)	6
Color - Resin	Natural

Durability (mating cycles max)	50
First Mate / Last Break	No
Flammability	94V-2
Glow-Wire Capable	No
Keying to Mating Part	Yes
Lock to Mating Part	Yes
Material - Metal	Phosphor Bronze
Material - Plating Mating	Tin
Material - Plating Termination	Tin
Material - Resin	Nylon
Net Weight	3.647/g
Number of Rows	3
Orientation	Vertical
Packaging Type	Tray
PC Tail Length	4.30mm
PCB Locator	Yes
PCB Retention	Yes
PCB Thickness - Recommended	1.60mm
Pitch - Mating Interface	6.35mm
Pitch - Termination Interface	6.35mm
Polarized to Mating Part	Yes
Polarized to PCB	Yes
Shrouded	Fully
Stackable	No
Temperature Range - Operating	-55° to +105°C
Termination Interface Style	Through Hole

Solder Process Data

Lead-Free Process Capability	N/A
------------------------------	-----

Mates With / Use With

Mates with Part(s)

Description	Part Number
-------------	-------------

2.13mm Diameter MLX Power Crimp Housing Plugs	<u>42021</u>
MLX Male Crimp Terminals	<u>42023</u>
MLX Female Crimp Terminals	<u>42024</u>

This document was generated on Jan 06, 2025

Looking for pricing, stock, or lifecycle information?

Click below to explore more details on WIN SOURCE:

 [View 0432550139 on WIN SOURCE](#)

 [Molex, LLC Information](#)

Optimize Your Supply Chain with WIN SOURCE Solutions

-  Global Sourcing Solution
-  Obsolete Management
-  Cost Control Management
-  Shortage Management
-  Alternative Solution
-  Excess Inventory Management