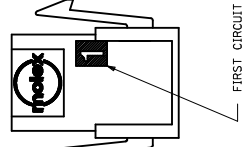
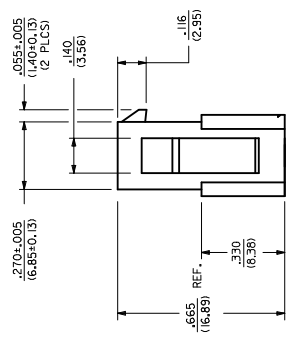
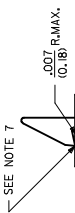
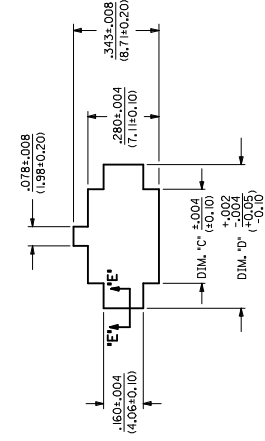
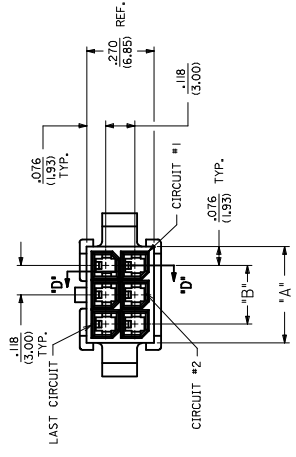




ASSEMBLY ITEM NUMBER	PART CHARACTERISTICS		MATERIAL
	NUMBER OF POSITION	MOUNT OPTION	
43020-0200	02	YES	
43020-0201	02	NO	
43020-0400	04	YES	
43020-0401	04	NO	
43020-0600	06	YES	
43020-0601	06	NO	
43020-0800	08	YES	
43020-0801	08	NO	
43020-1000	10	YES	
43020-1001	10	NO	
43020-1200	12	YES	
43020-1201	12	NO	
43020-1400	14	YES	
43020-1401	14	NO	
43020-1600	16	YES	
43020-1601	16	NO	
43020-1800	18	YES	
43020-1801	18	NO	
43020-2000	20	YES	
43020-2001	20	NO	
43020-2200	22	YES	
43020-2201	22	NO	
43020-2400	24	YES	
43020-2401	24	NO	

CKT. NO.	DIM. 'A'	DIM. 'B'	DIM. 'C'	DIM. 'D'
2	.152/(3.86)	N/A	-.167/(4.21)	-.311/(7.90)
4	.270/(6.85)	-.118/(3.00)	-.284/(7.21)	-.429/(10.90)
6	.388/(9.85)	-.236/(6.00)	-.402/(10.21)	-.547/(13.89)
8	.506/(12.85)	-.354/(9.00)	-.520/(13.21)	-.665/(16.89)
10	.624/(15.85)	-.472/(12.00)	-.638/(16.21)	-.783/(19.89)
12	.742/(18.85)	-.591/(15.00)	-.756/(19.21)	-.901/(22.89)
14	.860/(21.85)	-.709/(18.00)	-.874/(22.20)	1.019/(25.89)
16	1.096/(27.85)	-.827/(21.00)	-.992/(25.20)	1.137/(28.88)
18	1.215/(30.85)	1.063/(27.00)	1.229/(31.22)	1.373/(34.87)
20	1.333/(33.85)	1.181/(30.00)	1.347/(34.22)	1.491/(37.87)
22	1.451/(36.85)	1.299/(33.00)	1.465/(37.22)	1.609/(40.87)

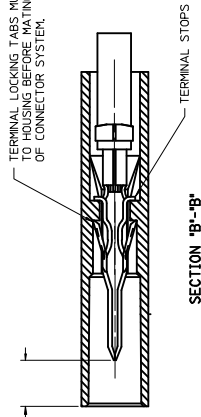


0.79 REF. TO HOUSING BEFORE MATING WITH OTHER HALF OF CONNECTOR SYSTEM.

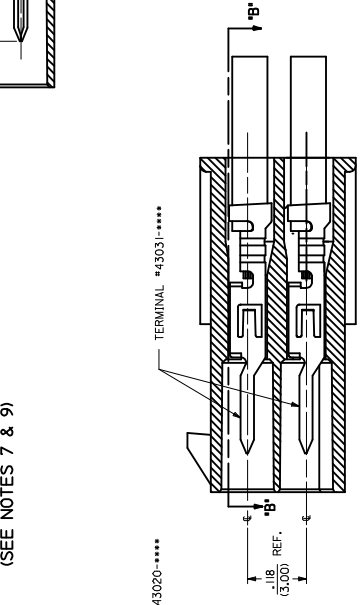
TERMINAL INSERTION DEPTH

SECTION 'E'-'E' NO SCALE

RECOMMENDED PANEL CUT-OUT (SEE NOTES 7 & 9)



SECTION 'B'-'B'



MATED MICRO-FIT CONNECTOR

QUALITY SYMBOLS	GENERAL TOLERANCES UNLESS SPECIFIED	DIM. INCH	DRAWN BY
0-0	4 PLACES ± .010	mm	AFC
0-0	3 PLACES ± .010	mm	CHECKED
0-0	2 PLACES ± .025	mm	BAP
0-0	1 PLACE ± 0.35	mm	APPROVED
0-0	0 PLACE ± .---	mm	SMITH
ANGULAR ±1/2° MAXIMUM			
DRAFT WHERE APPLICABLE			
MUS L REMAIN WITHIN DIMENSIONS			

REV	DESCRIPTION
04	EC NO: UC20T-0525
	RRW-JOHN LILES
	CHD-SSOUSSEK
	APP-FSMITH
	2016/10/07

## Looking for pricing, stock, or lifecycle information?

Click below to explore more details on WIN SOURCE:

 [View 0430200801 on WIN SOURCE](#)

 [Molex, LLC Information](#)

## Optimize Your Supply Chain with WIN SOURCE Solutions

-  Global Sourcing Solution
-  Obsolete Management
-  Cost Control Management
-  Shortage Management
-  Alternative Solution
-  Excess Inventory Management