

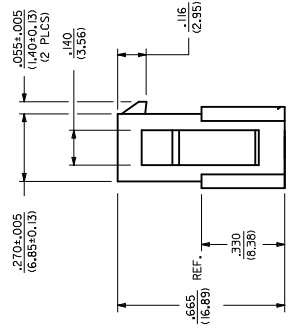
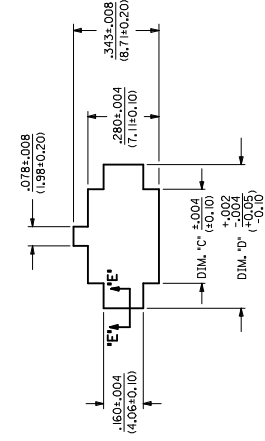
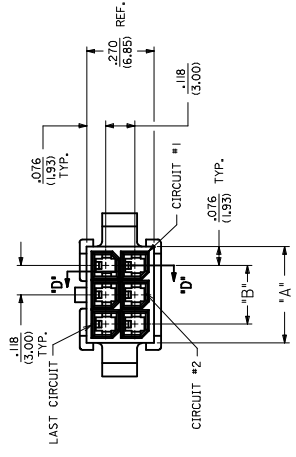


**THE DATASHEET OF**  
**0430200200**



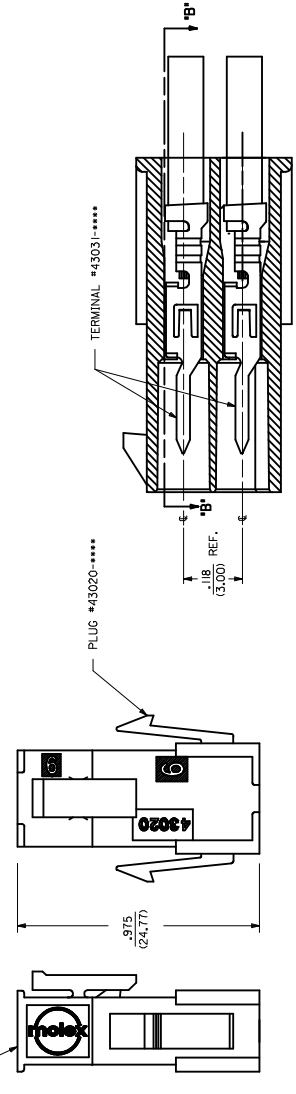
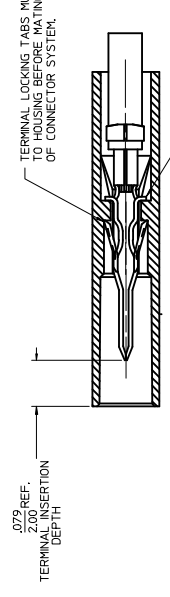
| ASSEMBLY ITEM NUMBER | PART CHARACTERISTICS |              | MATERIAL |
|----------------------|----------------------|--------------|----------|
|                      | NUMBER OF POSITION   | MOUNT OPTION |          |
| 43020-0200           | 02                   | YES          |          |
| 43020-0201           | 02                   | NO           |          |
| 43020-0400           | 04                   | YES          |          |
| 43020-0401           | 04                   | NO           |          |
| 43020-0600           | 06                   | YES          |          |
| 43020-0601           | 06                   | NO           |          |
| 43020-0800           | 08                   | YES          |          |
| 43020-0801           | 08                   | NO           |          |
| 43020-1000           | 10                   | YES          |          |
| 43020-1001           | 10                   | NO           |          |
| 43020-1200           | 12                   | YES          |          |
| 43020-1201           | 12                   | NO           |          |
| 43020-1400           | 14                   | YES          |          |
| 43020-1401           | 14                   | NO           |          |
| 43020-1600           | 16                   | YES          |          |
| 43020-1601           | 16                   | NO           |          |
| 43020-1800           | 18                   | YES          |          |
| 43020-1801           | 18                   | NO           |          |
| 43020-2000           | 20                   | YES          |          |
| 43020-2001           | 20                   | NO           |          |
| 43020-2200           | 22                   | YES          |          |
| 43020-2201           | 22                   | NO           |          |
| 43020-2400           | 24                   | YES          |          |
| 43020-2401           | 24                   | NO           |          |

| CKT. NO. | DIM. 'A'      | DIM. 'B'      | DIM. 'C'      | DIM. 'D'      |
|----------|---------------|---------------|---------------|---------------|
| 2        | .152/(3.86)   | N/A           | .166/(4.21)   | .311/(7.90)   |
| 4        | .270/(6.85)   | .118/(3.00)   | .284/(7.21)   | .429/(10.90)  |
| 6        | .388/(9.85)   | .236/(6.00)   | .402/(10.21)  | .547/(13.89)  |
| 8        | .506/(12.85)  | .354/(9.00)   | .520/(13.21)  | .665/(16.89)  |
| 10       | .624/(15.85)  | .472/(12.00)  | .638/(16.21)  | .783/(19.89)  |
| 12       | .742/(18.85)  | .591/(15.00)  | .756/(19.21)  | .901/(22.89)  |
| 14       | .860/(21.85)  | .709/(18.00)  | .874/(22.20)  | 1.019/(25.88) |
| 16       | 1.096/(27.85) | .827/(21.00)  | .945/(24.00)  | 1.157/(29.88) |
| 18       | 1.215/(30.85) | 1.063/(27.00) | 1.229/(31.22) | 1.373/(34.87) |
| 20       | 1.333/(33.85) | 1.181/(30.00) | 1.347/(34.22) | 1.491/(37.87) |
| 22       | 1.451/(36.85) | 1.299/(33.00) | 1.465/(37.22) | 1.609/(40.87) |



**SECTION 'E'-'E'**  
NO SCALE

**RECOMMENDED PANEL CUT-OUT**  
(SEE NOTES 7 & 9)



**MATED MICRO-FIT CONNECTOR**

**SECTION 'B'-'B'**

| QUALITY SYMBOLS | GENERAL TOLERANCES UNLESS SPECIFIED | DIM. UNITS                    |
|-----------------|-------------------------------------|-------------------------------|
| 0-0             | 4 PLACES ± .010                     | mm                            |
| 0-0             | 3 PLACES ± .010                     | INCH                          |
| 0-0             | 2 PLACES ± .010                     | AFC                           |
| 0-0             | 1 PLACE ± .025                      | CHECKED                       |
| 0-0             | 0 PLACE ± 0.35                      | BAP                           |
|                 |                                     | APPROVED                      |
|                 |                                     | SMITH                         |
|                 |                                     | MATERIAL                      |
|                 |                                     | ANGULAR ±.72°                 |
|                 |                                     | DRAFT WHERE APPLICABLE        |
|                 |                                     | MUS. REMAIN WITHIN DIMENSIONS |

## Looking for pricing, stock, or lifecycle information?

Click below to explore more details on WIN SOURCE:

 [View 0430200200 on WIN SOURCE](#)

 [Molex, LLC Information](#)

## Optimize Your Supply Chain with WIN SOURCE Solutions

-  Global Sourcing Solution
-  Obsolete Management
-  Cost Control Management
-  Shortage Management
-  Alternative Solution
-  Excess Inventory Management