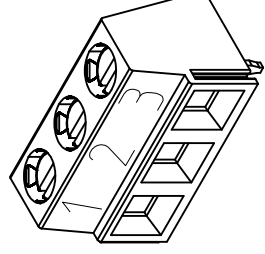




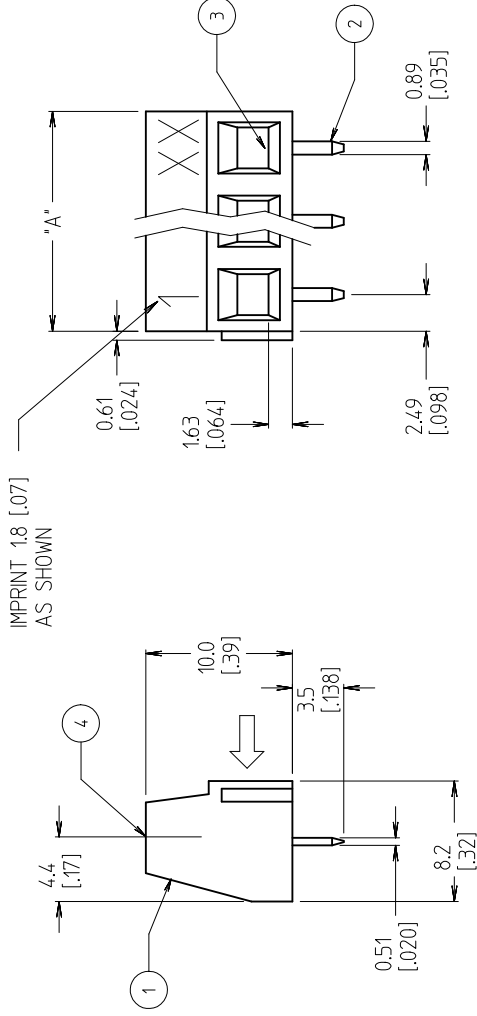
THE DATASHEET OF
0398900302



10 9 8 7 6 5 4 3

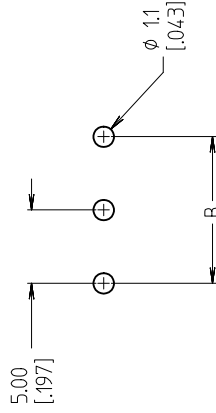


3 CIRCUIT SHOWN



NOTES:

1. MATERIAL: SEE TABLE
2. FINISHES: SEE TABLE
3. ASSEMBLY IS ROHS COMPLIANT BY EXEMPTION. COMPONENTS MARKED WITH AN ASTERISK (*) ARE ROHS COMPLIANT BY EXEMPTION. ALL OTHERS ARE ROHS COMPLIANT.
4. INCH DIMS ARE SHOWN IN BRACKETS [XXX].



MATERIAL NO.	MATERIAL (GREEN)	MATERIAL NO.	MATERIAL (BLACK)
398990074	398904302	3989003	3989003
398990076	398904303	3989003	3989003
398990077	398904304	3989003	3989003
398990028	398904305	3989003	3989003
	398904306	3989003	3989003
	398904307	3989003	3989003
	398904308	3989003	3989003
	398904309	3989003	3989003
	398904310	3989003	3989003
	398904311	3989003	3989003
	398904312	3989003	3989003
	398904313	3989003	3989003
	398904314	3989003	3989003
	398904315	3989003	3989003
	398904316	3989003	3989003
	398904317	3989003	3989003
	398904318	3989003	3989003
	398904319	3989003	3989003
	398904320	3989003	3989003
	398904321	3989003	3989003
	398904322	3989003	3989003
	398904323	3989003	3989003
	398904324	3989003	3989003
	398904325	3989003	3989003

4	XX	SCREW, M3	COPPER ALLOY	NICKEL PLATED
3	XX	CAGE CLAMP (*)	COPPER ALLOY	NICKEL PLATED
2	XX	TERMINAL, PC	COPPER ALLOY	TIN PLATED (E)
1	1	INSULATOR	POLYAMIDE	BLACK
ITEM	QTY.	DESCRIPTION	MATERIAL	FINISH

REV	DESCRIPTION
E	REVISED & REDRAWN FC NO: WNA2010-0469 DRAWN: CLYORK CHKD: DTITUS APP: DTITUS 2010/01/26 2010/02/02

QUALITY SYMBOLS	GENERAL TOLERANCES (UNLESS SPECIFIED)
\blacktriangle =0	4 PLACES \pm .005
\triangle =0	3 PLACES \pm .010
	2 PLACES \pm 0.13
	1 PLACE \pm 0.3
	ANGULAR \pm 2 °

DRAFT WHERE APPLICABLE MUST REMAIN WITHIN DIMENSIONS

SEE CHART

SIZE B

THIS DRAWING CONTAINS INCORPORATED AND SHOWN

DOC

Looking for pricing, stock, or lifecycle information?

Click below to explore more details on WIN SOURCE:

 [View 0398900302 on WIN SOURCE](#)

 [Molex, LLC Information](#)

Optimize Your Supply Chain with WIN SOURCE Solutions

-  Global Sourcing Solution
-  Obsolete Management
-  Cost Control Management
-  Shortage Management
-  Alternative Solution
-  Excess Inventory Management