



**THE DATASHEET OF
M50-3030242**



Customer Information Sheet

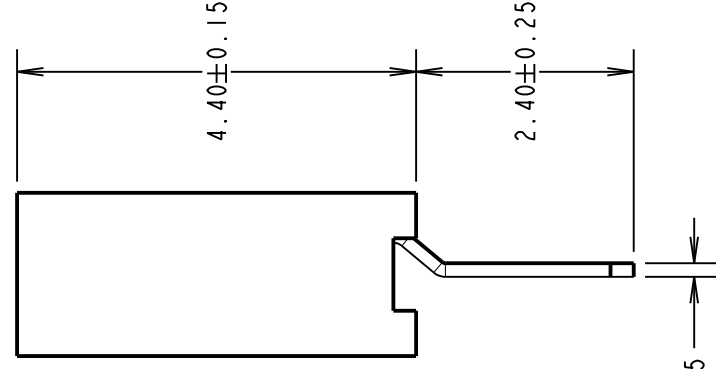
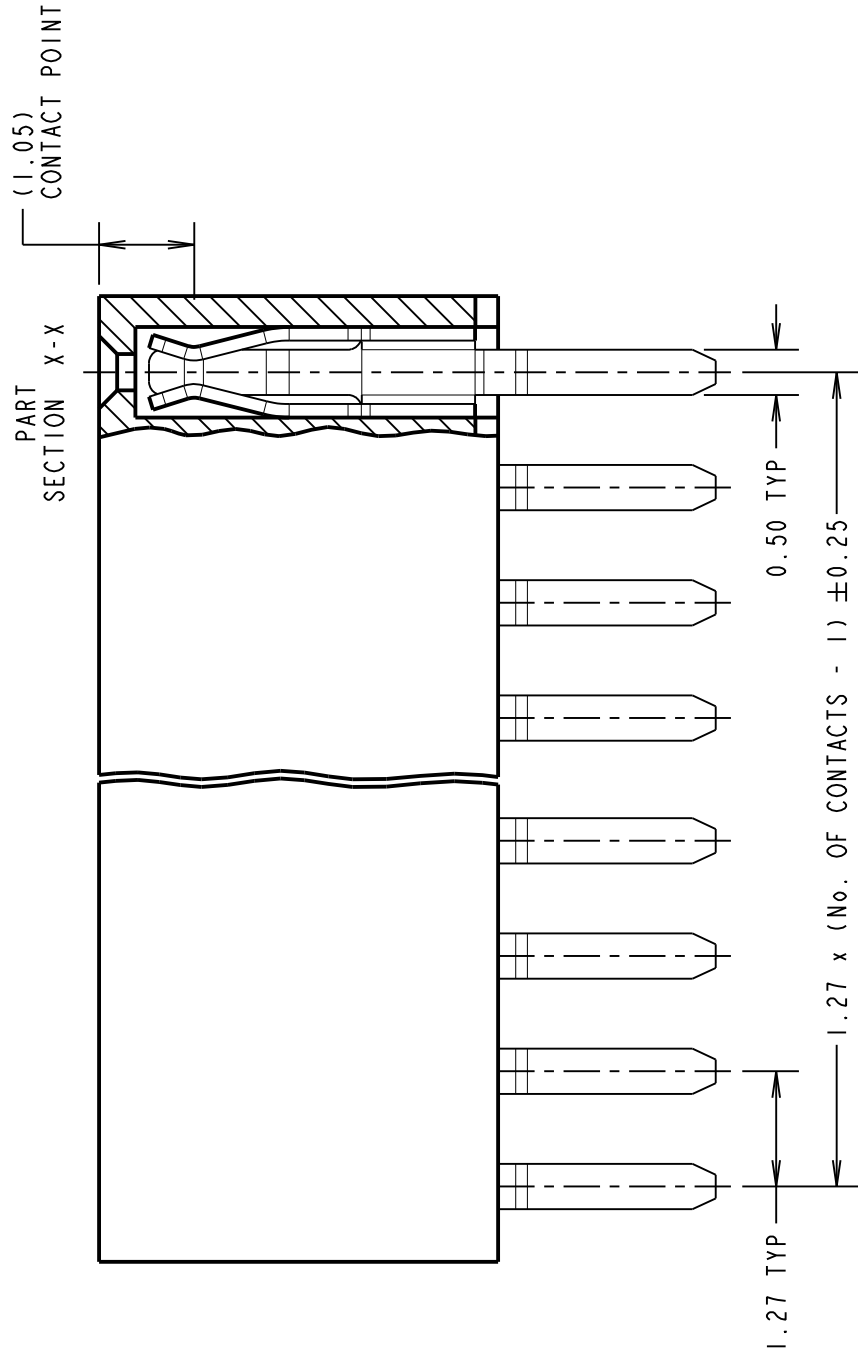
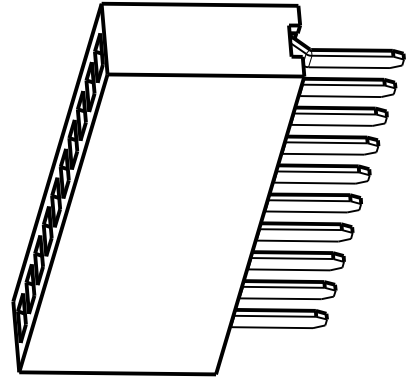
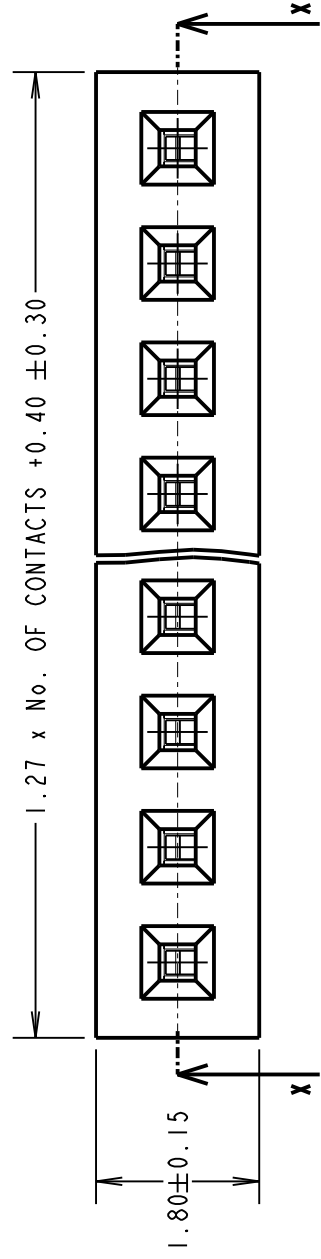
DRAWING No.: M50-303XX42

SHEET 2 OF 2

IF IN DOUBT - ASK



NOT TO SCALE



HARWIN
www.harwin.com
technical@harwin.com

THIS DRAWING AND ANY INFORMATION OR DESCRIPTIVE MATTER SET OUT HEREON ARE CONFIDENTIAL AND COPYRIGHT PROPERTY OF THE HARWIN GROUP AND MUST NOT BE DISCLOSED, LOANED, COPIED OR USED FOR MANUFACTURING, TENDERING OR FOR ANY OTHER PURPOSE WITHOUT THEIR WRITTEN PERMISSION.

TOLEANCES
 X. = ± 1mm
 X.X = ± 0.50mm
 X.XX = ± 0.10mm
 X.XXX = ± 0.01mm
 ANGLES = ± 5°
 UNLESS STATED

MATER
 FINI
 S/ARI

Looking for pricing, stock, or lifecycle information?

Click below to explore more details on WIN SOURCE:

[View M50-3030242 on WIN SOURCE](#)

[Harwin Inc. Information](#)

Optimize Your Supply Chain with WIN SOURCE Solutions

- ✓ Global Sourcing Solution
- ✓ Obsolete Management
- ✓ Cost Control Management
- ✓ Shortage Management
- ✓ Alternative Solution
- ✓ Excess Inventory Management