



**THE DATASHEET OF**  
**0355-0-15-01-02-01-10-0**



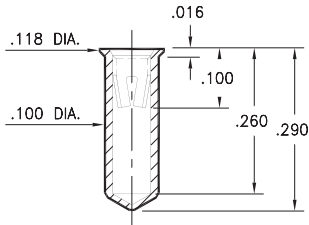
# PIN RECEPTACLES

**FOR .040" - .050" DIAMETER PINS (#02 CONTACT)**  
**FOR .040" - .060" DIAMETER PINS (#03 CONTACT)**

## 0355

**0355-0-15-XX-02-XX-10-0**

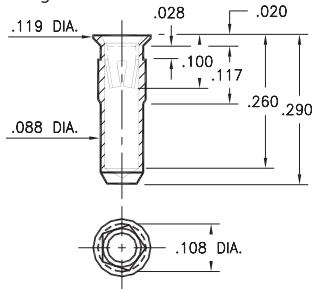
Solder mount in .102 min. mounting hole  
 Also available on 24mm wide carrier tape:  
 700 parts per 13" reel  
 See page 194.16 for Tape & Reel details



## 0354

**0354-0-15-XX-02-XX-10-0**

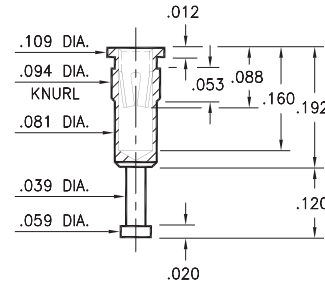
Pentagonal press-fit in .104 min. plated through-hole



## 3490

**3490-0-15-XX-02-XX-10-0**

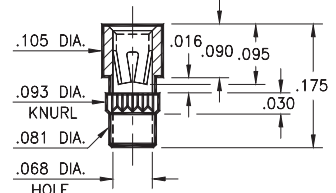
Press-fit in .091 mounting hole



## 3808

**3808-0-15-XX-02-XX-10-0**

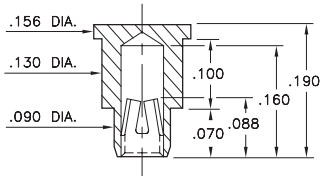
Press-fit in .090 mounting hole



## 9184

**9184-0-15-XX-02-XX-40-0**

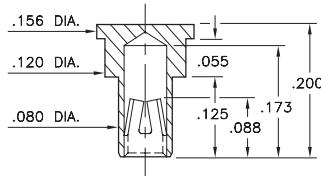
Bottom entry, surface mount  
 .092 min. plated through-hole  
 Also available on carrier tape,  
 See page 194.16 for Tape & Reel details



## 9222

**9222-2-15-XX-02-XX-40-0**

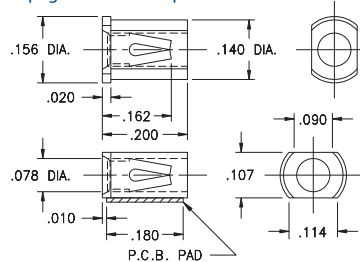
Bottom entry, surface mount  
 .082 min. plated through-hole  
 Also available on carrier tape,  
 See page 194.16 for Tape & Reel details



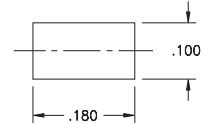
## 4064

**4064-0-18-XX-03-XX-40-0**

Surface mount  
 Also available on 16mm wide carrier tape:  
 2,400 parts per 13" reel  
 See page 194.17 for Tape & Reel details



### P.C.B. Layout



### SPECIFICATIONS:

**Shell Material:** Brass Alloy 360, 1/2 Hard

**Contact Material:** Beryllium Copper Alloy 172, HT

**Dimensions:** Inches

**Tolerances On:** Lengths: ±.005

Diameters: ±.002

Angles: ± 2°



**ORDER CODE:** XXXX - X - XX - XX - XX - XX - 0

**BASIC PART #**

**SPECIFY SHELL FINISH:**

- 01 200 μ" TIN/LEAD OVER NICKEL
- ◆ 80 200 μ" TIN OVER NICKEL (RoHS)
- ◆ 15 10 μ" GOLD OVER NICKEL (RoHS)

**SPECIFY CONTACT FINISH:**

- 01 200 μ" TIN/LEAD OVER NICKEL
- ◆ 80 200 μ" TIN OVER NICKEL (RoHS)
- ◆ 27 30 μ" GOLD OVER NICKEL (RoHS)

**SELECT CONTACT:**

**#02 or #03 CONTACT (DATA ON PAGE 259)**

(For alternate contact choices, see group F on page 248)



## Looking for pricing, stock, or lifecycle information?

Click below to explore more details on WIN SOURCE:

- ⊖ [View 0355-0-15-01-02-01-10-0 on WIN SOURCE](#)
- ⊖ [Mill-Max Manufacturing Corp.](#) Information

## Optimize Your Supply Chain with WIN SOURCE Solutions

- ✓ Global Sourcing Solution
- ✓ Obsolete Management
- ✓ Cost Control Management
- ✓ Shortage Management
- ✓ Alternative Solution
- ✓ Excess Inventory Management