



THE DATASHEET OF
0349128081





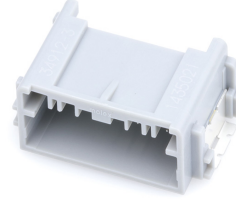
Part Number : [349128081](#)

Product Description : Mini50 Unsealed Header, Right-Angle, SMT, Single Row, 8 Circuits, Tin (Sn) Plating, Polarization Option B, Gray, Tape and Reel

Series Number : 34912

Status : Active

Product Category : PCB Headers and Receptacles



Documents & Resources

Drawings

[349128081_sd.pdf](#)

[PK-31301-786-001.pdf](#)

3D Models and Design Files

[349128081_stp.zip](#)

Specifications

[AS-34791-020-CH-001.pdf](#)

[2065230000-AS-000.pdf](#)

[AS-34791-020-001.pdf](#)

[AS-34791-020-CH-001.pdf](#)

[AS-34791-020-FR-001.pdf](#)

[2065230000-AS-KR-000.pdf](#)

[PS-34791-020-001.pdf](#)

[2065230000-TS-000.pdf](#)

[347910020-TS-000.pdf](#)

Product Environment Compliance

Compliance

GADSL/IMDS	Compliant with Exemption 44; 33
China RoHS	
EU ELV	Compliant per 2000/53/EC
Low-Halogen Status	Low-Halogen per IEC 61249-2-21
REACH SVHC	Not Contained per D(2024)6225-DC (07 Nov 2024)
EU RoHS	Compliant per EU 2015/863

Multiple Part Product Compliance Statements

- Eu RoHS
- REACH SVHC
- Low-Halogen

Multiple Part Industry Compliance Documents

- IPC 1752A Class C
- IPC 1752A Class D
- Molex Product Compliance Declaration
- IEC-62474
- chemSHERPA (xml)

EU RoHS Certificate of Compliance

Part Details

General

Status	Active
Category	PCB Headers and Receptacles
Series	34912
Description	Mini50 Unsealed Header, Right-Angle, SMT, Single Row, 8 Circuits, Tin (Sn) Plating, Polarization Option B, Gray, Tape and Reel
Application	Automotive, Power, Signal, Wire-to-Board
Component Type	PCB Header
Product Name	Mini50
UPC	887191297415

Electrical

Current - Maximum per Contact	4.0A (for reference only)
Voltage - Maximum	14V (typical operating)

Physical

Breakaway	No
Circuits (Loaded)	8
Circuits (maximum)	8
Color - Resin	Gray
First Mate / Last Break	No

Glow-Wire Capable	No
Guide to Mating Part	No
Keying to Mating Part	Yes
Lock to Mating Part	Yes
Material - Metal	Brass
Material - Plating Mating	Tin
Material - Plating Termination	Tin
Material - Resin	SPS
Net Weight	1.900/g
Number of Rows	1
Orientation	Right Angle
Packaging Type	Embossed Tape on Reel
PCB Retention	Yes
Pitch - Mating Interface	2.00mm
Polarized to Mating Part	Yes
Polarized to PCB	Yes
Temperature Range - Operating	-40° to +100°C
Termination Interface Style	Surface Mount

Solder Process Data

Lead-Free Process Capability	N/A
------------------------------	-----

Mates With / Use With

Mates with Part(s)

Description	Part Number
Mini50 Unsealed Receptacle Housings	<u>34791</u>
Mini50 Unsealed Dual Row Receptacles	<u>206523</u>

Looking for pricing, stock, or lifecycle information?

Click below to explore more details on WIN SOURCE:

 [View 0349128081 on WIN SOURCE](#)

 [Molex, LLC Information](#)

Optimize Your Supply Chain with WIN SOURCE Solutions

-  Global Sourcing Solution
-  Obsolete Management
-  Cost Control Management
-  Shortage Management
-  Alternative Solution
-  Excess Inventory Management