



**THE DATASHEET OF**  
**0348268124**





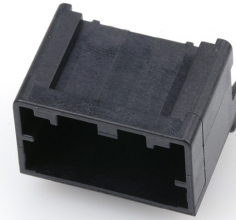
**Part Number :** [348268124](#)

**Product Description :** Mini50 Unsealed Right-Angle Header, Dual Row, 12 Circuit, Polarization Option A, 2.80mm Pin Length, Black, Tape and Reel

**Series Number :** 34826

**Status :** Active

**Product Category :** PCB Headers and Receptacles



---

## Documents & Resources

### Drawings

[348268124\\_sd.pdf](#)

[PK-31301-786-001.pdf](#)

[PK-47799-0001-001.pdf](#)

### 3D Models and Design Files

[348268124\\_stp.zip](#)

### Specifications

[AS-34791-020-CH-001.pdf](#)

[2065230000-AS-000.pdf](#)

[AS-34791-020-001.pdf](#)

[AS-34791-020-CH-001.pdf](#)

[AS-34791-020-FR-001.pdf](#)

[2065230000-AS-KR-000.pdf](#)

[PS-34791-020-001.pdf](#)

[2065230000-TS-000.pdf](#)

[347910020-TS-000.pdf](#)

---

## Product Environment Compliance

### Compliance

GADSL/IMDS	Duty-To-Declare
China RoHS	
EU ELV	Compliant per 2000/53/EC
Low-Halogen Status	Low-Halogen per IEC 61249-2-21
REACH SVHC	Not Contained per D(2024)6225-DC (07 Nov 2024)
EU RoHS	Compliant per EU 2015/863

## Multiple Part Product Compliance Statements

- Eu RoHS
- REACH SVHC
- Low-Halogen

## Multiple Part Industry Compliance Documents

- IPC 1752A Class C
- IPC 1752A Class D
- Molex Product Compliance Declaration
- IEC-62474
- chemSHERPA (xml)

## EU RoHS Certificate of Compliance

---

### Part Details

#### General

Status	Active
Category	PCB Headers and Receptacles
Series	34826
Description	Mini50 Unsealed Right-Angle Header, Dual Row, 12 Circuit, Polarization Option A, 2.80mm Pin Length, Black, Tape and Reel
Application	Automotive, Power, Signal, Wire-to-Board
Component Type	PCB Header
Product Name	Mini50
UPC	191128064118

#### Electrical

Current - Maximum per Contact	4.0A (for reference only)
Voltage - Maximum	14V (typical operating)

#### Physical

Breakaway	No
Circuits (Loaded)	12
Circuits (maximum)	12
Color - Resin	Black
Durability (mating cycles max)	10

First Mate / Last Break	No
Glow-Wire Capable	No
Guide to Mating Part	No
Keying to Mating Part	Yes
Lock to Mating Part	Yes
Material - Metal	Brass
Material - Plating Mating	Tin
Material - Plating Termination	Tin
Material - Resin	High Temperature Thermoplastic
Net Weight	2.200/g
Number of Rows	2
Orientation	Right Angle
Packaging Type	Embossed Tape on Reel
PC Tail Length	2.80mm
PCB Locator	Yes
Pitch - Mating Interface	2.00mm
Polarized to Mating Part	Yes
Polarized to PCB	Yes
Temperature Range - Operating	-40° to +105°C
Termination Interface Style	Through Hole

---



## Mates With / Use With

### Mates with Part(s)

Description	Part Number
Mini50 Unsealed Dual Row Receptacle Housings	<u>34824</u>
Mini50 Unsealed Dual Row Receptacles	<u>206523</u>

## Looking for pricing, stock, or lifecycle information?

Click below to explore more details on WIN SOURCE:

-  [View 0348268124 on WIN SOURCE](#)
-  [Molex, LLC Information](#)

## Optimize Your Supply Chain with WIN SOURCE Solutions

-  Global Sourcing Solution
-  Obsolete Management
-  Cost Control Management
-  Shortage Management
-  Alternative Solution
-  Excess Inventory Management