



THE DATASHEET OF
0347290203





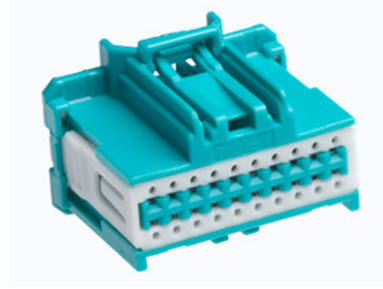
Part Number : [347290203](#)

Product Description : Stac64 Receptacle Housing, 20 Circuits, Dual Row, Polarization D, Green, Tray

Series Number : 34729

Status : Active

Product Category : Connector Housings



Documents & Resources

Drawings

[347290203_sd.pdf](#)

[PK-31301-201-001.pdf](#)

3D Models and Design Files

[347290203_stp.zip](#)

Specifications

[347290200-AS-CH-000.pdf](#)

[AS-34729-020-001.pdf](#)

[PS-34729-020-001.pdf](#)

Product Environment Compliance

Compliance

GADSL/IMDS	Compliant
China RoHS	
EU ELV	Compliant per 2000/53/EC
Low-Halogen Status	Low-Halogen per IEC 61249-2-21
REACH SVHC	Not Contained per D(2024)6225-DC (07 Nov 2024)
EU RoHS	Compliant per EU 2015/863

Multiple Part Product Compliance Statements

- Eu RoHS
- REACH SVHC
- Low-Halogen

Multiple Part Industry Compliance Documents

- IPC 1752A Class C

- IPC 1752A Class D
- Molex Product Compliance Declaration
- IEC-62474
- chemSHERPA (xml)

EU RoHS Certificate of Compliance

Part Details

General

Status	Active
Category	Connector Housings
Series	34729
Description	Stac64 Receptacle Housing, 20 Circuits, Dual Row, Polarization D, Green, Tray
Application	Automotive, Signal, Wire-to-Board
Product Name	Stac64
UPC	884982006577

Physical

Circuits (maximum)	20
Color - Resin	Green
Gender	Receptacle
Glow-Wire Capable	No
Keying to Mating Part	None
Lock to Mating Part	Yes
Material - Resin	High Temperature Thermoplastic
Net Weight	7.300/g
Number of Rows	2
Packaging Type	Tray
Panel Mount	N/A
Pitch - Mating Interface	2.54mm
Pitch - Termination Interface	2.54mm
Polarization	D
Polarized to Mating Part	Yes
Stackable	Yes
Temperature Range - Operating	-40° to +100°C

Solder Process Data

Lead-Free Process Capability	N/A
------------------------------	-----

Mates With / Use With

Mates with Part(s)



Description	Part Number
Stac64 Vertical Header Assemblies	<u>34690</u>
Stac64 Right-Angle Header Assemblies	<u>34691</u>

Use with Part(s)

Description	Part Number
CTX64 Female Terminals	<u>34803</u>

Looking for pricing, stock, or lifecycle information?

Click below to explore more details on WIN SOURCE:

-  [View 0347290203 on WIN SOURCE](#)
-  [Molex, LLC Information](#)

Optimize Your Supply Chain with WIN SOURCE Solutions

-  Global Sourcing Solution
-  Obsolete Management
-  Cost Control Management
-  Shortage Management
-  Alternative Solution
-  Excess Inventory Management