



THE DATASHEET OF
0293-0-15-15-16-27-10-0



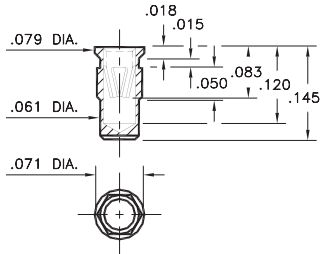
PIN RECEPTACLES

FOR .022" - .034" DIAMETER PINS AND .025" SQUARE PINS

0291

0291-0-15-XX-16-XX-10-0

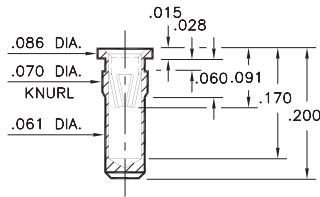
Hex press-fit in .067 plated through-hole



0293

0293-0-15-XX-16-XX-10-0

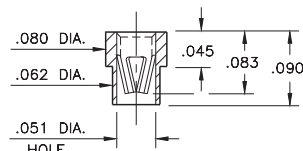
Press-fit in .067 mounting hole



0287

0287-0-15-XX-16-XX-10-0

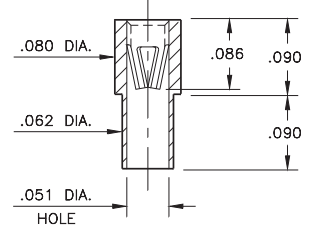
Solder mount in .065 min. mounting hole
Also available on 8mm wide carrier tape:
3,250 parts per 13" reel
See page 194.11 for Tape & Reel details



0285

0285-0-15-XX-16-XX-10-0

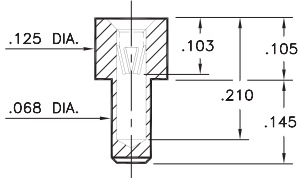
Solder mount in .065 min. mounting hole



0284

0284-0-15-XX-16-XX-10-0

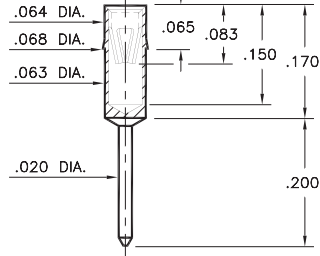
Solder mount in .070 min. mounting hole
Also available on 24mm wide carrier tape:
1,200 parts per 13" reel
See page 194.11 for Tape & Reel details



8114

8114-0-15-XX-16-XX-04-0

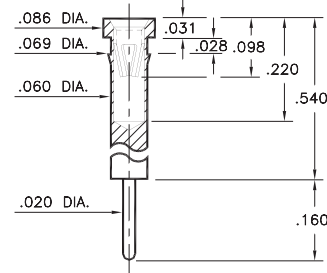
Press-fit from underside of pc board
into .065 mounting hole



0407

0407-0-15-XX-16-XX-04-0

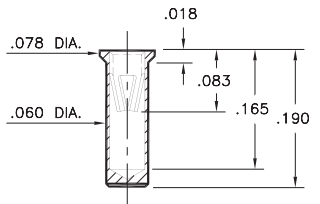
Press-fit in .066 mounting hole



0415

0415-0-15-XX-16-XX-10-0

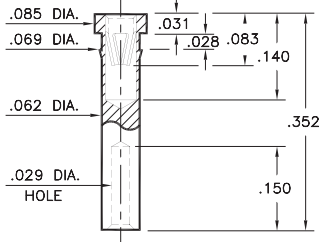
Solder mount in .063 min. mounting hole
Also available on 24mm wide carrier tape:
1,500 parts per 13" reel
See page 194.11 for Tape & Reel details



0303

0303-0-19-XX-16-XX-10-0

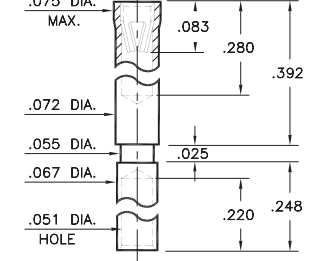
Press-fit in .067 mounting hole
Wire Crimp Termination. Accepts wire
sizes 26 AWG Max. / 30 AWG Min.



0306

0306-0-19-XX-16-XX-10-0

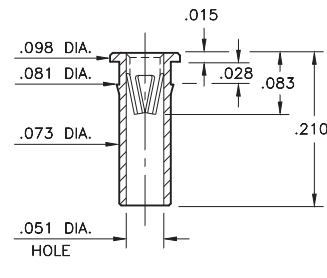
Wire Crimp Termination. Accepts wire
sizes 20 AWG Max. / 24 AWG Min.



0273

0273-0-15-XX-16-XX-10-0

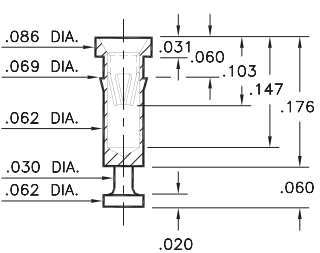
Press-fit in .078 mounting hole



7520

7520-0-15-XX-16-XX-10-0

Press-fit in .066 mounting hole



SPECIFICATIONS:

Shell Material: Brass Alloy 360, 1/2 Hard

Contact Material: Beryllium Copper Alloy 172, HT

Dimensions: Inches

Tolerances On: Lengths: ±.005

Diameters: ±.002

Angles: ± 2°



ORDER CODE: XXXX - X - XX - XX - 16 - XX - XX - 0

BASIC PART #

SPECIFY SHELL FINISH:

01 200 μ" TIN/LEAD OVER NICKEL

◆ 80 200 μ" TIN OVER NICKEL (RoHS)

◆ 15 10 μ" GOLD OVER NICKEL (RoHS)

SPECIFY CONTACT FINISH:

01 200 μ" TIN/LEAD OVER NICKEL

◆ 80 200 μ" TIN OVER NICKEL (RoHS)

◆ 27 30 μ" GOLD OVER NICKEL (RoHS)

SELECT CONTACT:

#16 CONTACT (DATA ON PAGE 256)

(For alternate contact choices, see group D on page 248)



Looking for pricing, stock, or lifecycle information?

Click below to explore more details on WIN SOURCE:

- ⊖ [View 0293-0-15-15-16-27-10-0 on WIN SOURCE](#)
- ⊖ [Mill-Max Manufacturing Corp. Information](#)

Optimize Your Supply Chain with WIN SOURCE Solutions

- ✓ Global Sourcing Solution
- ✓ Obsolete Management
- ✓ Cost Control Management
- ✓ Shortage Management
- ✓ Alternative Solution
- ✓ Excess Inventory Management