



THE DATASHEET OF
0293020.MXJ



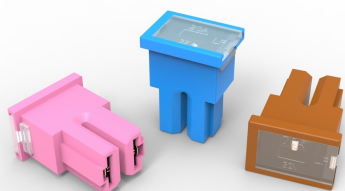
PAL Fuses - 293 Series

Rated 32 V DC

RoHS

Specifications

Voltage Rating:	32 V DC
Current Cycling:	24°C
Operating Temperature Range:	-40°C to +125°C
Complies with	JASO 0612



PAL Fuses - 293 Series

Description

Many Japanese automakers use 293 Series Auto Link PAL fuses as original equipment. The 32 V cartridge fuses withstand extreme temperatures while protecting circuits for alternators and starters. During tests, each of the 293 Series PAL fuses met its performance requirements when receiving 50 % of its ampere rating for 10 000 cycles when current flowed for 5 minutes and was shut off for 10 minutes. The tests were conducted while the temperature of the bolt-down cartridge fuse was 24 °C.

Features & Benefits

- Color coding indicates ampere rating
- Transparent covers make it easier to see when fuses blow
- Snap securely onto terminals

Applications

- Cars made in Japan and the United States

Ordering Information

Part Number	Package Size
0293xxx.H	100
0293xxx.U	500
0293xxx.MXJ	1000

Cable Fuses and PAL Fuses

293 Series - Auto Link PAL 293 Series Fuse

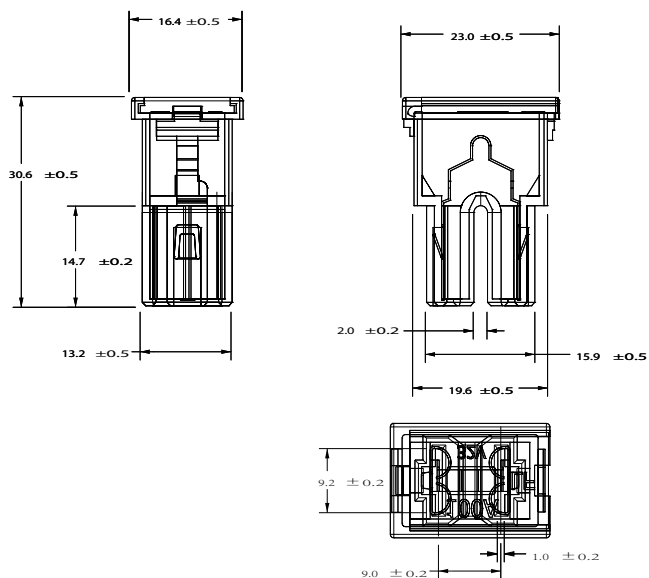
Ratings

Part Number	Current Rating (A)	Body Color
0293020._	20	LIGHT BLUE
0293030._	30	PINK
0293040._	40	GREEN
0293050._	50	RED
0293060._	60	YELLOW
0293070._	70	BROWN
0293080._	80	BLACK
0293100._	100	BLUE

(Average Initial Measurements)

Dimensions

Dimensions in mm



Cable Fuses and PAL Fuses

293 Series - Auto Link PAL 293 Series Fuse

Time-Current Characteristics

% of Rating	Opening Time Min / Max (s)
110	14,400
200	5 / 100
350	0.2 / 7
600	0.040 / 1

Looking for pricing, stock, or lifecycle information?

Click below to explore more details on WIN SOURCE:

 [View 0293020.MXJ on WIN SOURCE](#)

 [Littelfuse Inc. Information](#)

Optimize Your Supply Chain with WIN SOURCE Solutions

-  Global Sourcing Solution
-  Obsolete Management
-  Cost Control Management
-  Shortage Management
-  Alternative Solution
-  Excess Inventory Management