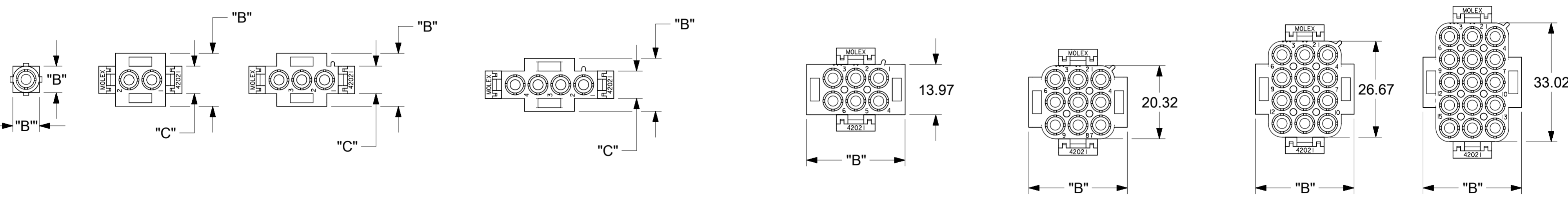
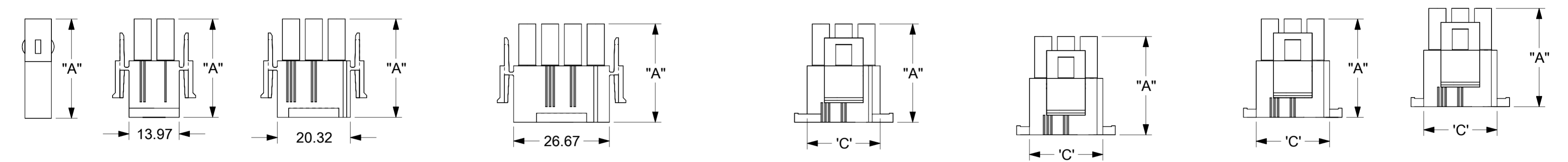
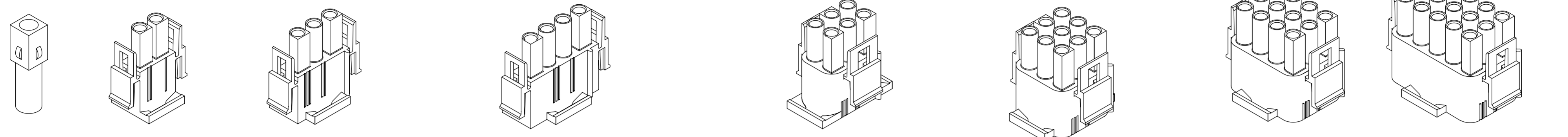




**THE DATASHEET OF**  
**0050841040**





THIS DRAWING CONTAINS INFORMATION THAT IS PROPRIETARY TO MOLEX ELECTRONIC TECHNOLOGIES, LLC AND SHOULD NOT BE USED WITHOUT WRITTEN PERMISSION

DIMENSION UNITS		SCALE		CURRENT REV DESC: MIGRATED TO ECTR			
MM		1:1		<p><b>molex</b></p> <p>HOUSING, PLUG 2.13 DIA. SERIES</p> <p>PRODUCT CUSTOMER DRAWING</p>			
GENERAL TOLERANCES (UNLESS SPECIFIED)							
	MM	INCH					
4 PLACES	±		±				
3 PLACES	±		± 0.1				
2 PLACES	± 0.25		± 0.14				
1 PLACE	± 0.36		±				
0 PLACES	±		±				
ANGULAR TOL		°		INITIAL REVISION:			
DRAFT WHERE APPLICABLE MUST REMAIN WITHIN DIMENSIONS		THIRD ANGLE PROJECTION		DRAWING		SERIES	
		A2-SIZE		42021		42021	

EC NO: 178202	2018/02/26	DOCUMENT NUMBER	DOC TYPE	DOC PART	REVISION
DRWN: RLALSANGI	2018/07/12				
CHK'D: NCSR	2018/07/12				
APPR: NCSR	2018/07/12	420210000	PSD	000	A
MATERIAL NUMBER					
SEE TABLE OF SHEET 2		GENERAL MARKET		1 OF 2	

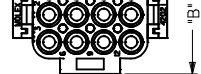
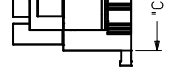
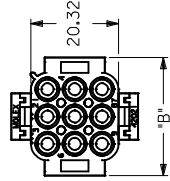
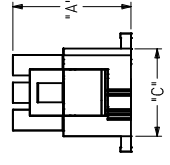
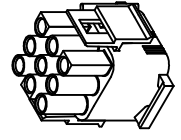
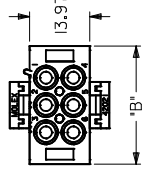
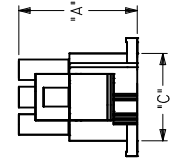
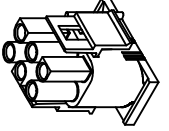
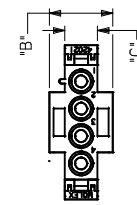
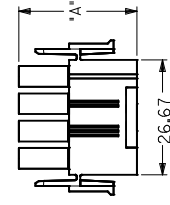
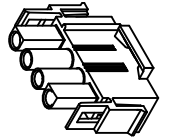
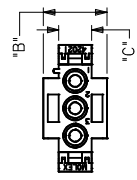
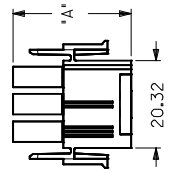
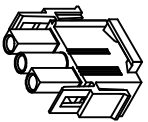
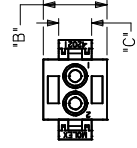
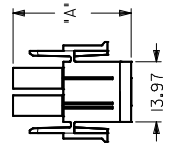
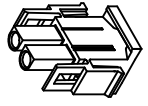
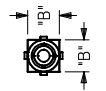
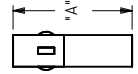
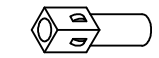
PART NO.	CIRCUIT SIZE	MATERIAL (SEE NOTE 1)	DIM "A"	DIM "B"	DIM "C"
050-84-1010	1	A	27.69	7.37	--
050-84-1015	1	C			
050-84-1020	2	A	27.61	14.73	7.62
050-84-1025	2	C			
050-84-1030	3	A	27.61	14.73	7.62
050-84-1035	3	C			
050-84-1040	4	A	27.61	14.73	7.62
050-84-1045	4	C			
050-84-1060	6	A	27.61	27.43	20.32
050-84-1065	6	C			
050-84-1090	9	A	27.61	27.43	20.32
050-84-1095	9	C			
050-84-1120	12	A	27.61	27.43	20.32
050-84-1125	12	C			
050-84-1150	15	A	27.61	27.43	20.32
050-84-1155	15	C			
366480001	1	D	27.43	7.37	--
366480002	2	D		14.73	7.62
366480003	3	D			
366480004	4	D			
366480005	6	D	27.43	27.43	20.32
366480006	9	D			
366480007	12	D			
366480008	15	D			

**NOTES:**

- 1) MATERIAL CODES:  
 "A"= NYLON TYPE 6/6, 94V-2  
 COLOR: NATURAL (WHITE/TRANSLUCENT)  
 "C"= NYLON TYPE 6/6, 94V-0  
 COLOR: NATURAL (WHITE)  
 "D"= NYLON 94V-2  
 COLOR: BLACK (ZYTEL 101F)
- 2) UNLESS OTHERWISE INDICATED, DIMENSIONS ARE FOR REFERENCE ONLY.
- 3) PLUG HOUSINGS MATE WITH:  
 -CAP HOUSINGS, 2.13 DIA. SERIES: (42022-\*\*\*\*)  
 -HEADER ASSEMBLY HOUSINGS, 2.13 DIA. SERIES: (A-42002-\*\*\*\*)
- 4) HOUSINGS DESIGNED TO BE USED WITH TERMINALS:  
 -PINS, 2.13 DIA. SERIES: (42023-\*\*\*\*)  
 -SOCKETS, 2.13 DIA. SERIES: (42024-\*\*\*\*)
- 5) CONTACTS ARE ON 6.35 GRID CENTERLINE SPACING.
- 6) PRODUCT SPECIFICATION PS-42022-0001 APPLIES.
- 7) FOR GLOW WIRE COMPATIBLE PART NUMBERS REFER DOCUMENT NO SD-36643-009.

THIS DRAWING CONTAINS INFORMATION THAT IS PROPRIETARY TO MOLEX ELECTRONIC TECHNOLOGIES, LLC AND SHOULD NOT BE USED WITHOUT WRITTEN PERMISSION									
DIMENSION UNITS		SCALE		CURRENT REV DESC: MIGRATED TO ECTR				<b>molex</b>	
MM		1:1							
GENERAL TOLERANCES (UNLESS SPECIFIED)				EC NO: 178202				HOUSING, PLUG 2.13 DIA. SERIES	
				DRWN: RLALSANGI 2018/02/26					
4 PLACES ±				CHK'D: NCSR 2018/07/12				PRODUCT CUSTOMER DRAWING	
3 PLACES ±				APPR: NCSR 2018/07/12					
2 PLACES ± 0.25				INITIAL REVISION:				DOCUMENT NUMBER	
1 PLACE ± 0.36				DRWN: RK 1987/11/16					
0 PLACES ±				APPR: GWF 1987/11/16				420210000	
ANGULAR TOL ± °				THIRD ANGLE PROJECTION		DRAWING		DOC TYPE	
DRAFT WHERE APPLICABLE MUST REMAIN WITHIN DIMENSIONS						A2-SIZE		PSD	
				SERIES		MATERIAL NUMBER		DOC PART	
				42021		SEE TABLE OF SHEET 2		000	
						CUSTOMER		REVISION	
						GENERAL MARKET		A	
						SHEET NUMBER			
						2 OF 2			

B 11 12 10 9 8 7 6 5 4



DIMENSION STYLE <b>MM ONLY</b>		DRAWN BY RK	DATE 87/11/
GENERAL TOLERANCES (UNLESS SPECIFIED)		CHECKED BY GMF	DATE 87/11/
4 PLACES ± ---	mm ± ---	APPROVED BY GMF	DATE 87/11/
3 PLACES ± ---	INCH ± ---	MATERIAL NO. SEE SHEET 2	SIZE THIS DRAWING CO INCORPORATED AN
2 PLACES ± 0.25	± 0.10	DRAFT WHERE APPLICABLE MUST REMAIN WITHIN DIMENSIONS	
1 PLACE ± 0.36	± 0.14	ANGULAR ± ---°	
0 PLACE ±	±	DRAFT WHERE APPLICABLE MUST REMAIN WITHIN DIMENSIONS	
QUALITY SYMBOLS	REV	DESCRIPTION	
∇ = 0	D	VIEWS UPDATED	
∇ = 0	DRW:GES	EC NO: 12018-0003	
∇ = 0	APPR:KPRASAD	2017/08/03	
∇ = 0	CH:KD:SNAGARAVENKA	2017/08/03	
∇ = 0	2017/09/07	2017/08/03	

PART NO.	CIRCUIT SIZE	MATERIAL (SEE NOTE 1)	DIM "A"	DIM "B"	DIM "C"
050-84-1010	1	A	27.69	7.37	----
050-84-1015	1	C			
050-84-1020	2	A	27.61	14.73	7.62
050-84-1025	2	C			
050-84-1030	3	A	27.61	14.73	7.62
050-84-1035	3	C			
050-84-1040	4	A	27.61	14.73	7.62
050-84-1045	4	C			
050-84-1060	6	A	27.61	27.43	20.32
050-84-1065	6	C			
050-84-1090	9	A	27.61	27.43	20.32
050-84-1095	9	C			
050-84-1120	12	A	27.61	27.43	20.32
050-84-1125	12	C			
050-84-1150	15	A	27.61	27.43	20.32
050-84-1155	15	C			
366480001	1	D		7.37	----
366480002	2	D			
366480003	3	D	27.43	14.73	7.62
366480004	4	D			
366480005	6	D			
366480006	9	D			
366480007	12	D			
366480008	15	D	27.43	27.43	20.32

**NOTES:**

- MATERIAL CODES:  
 \*A\*= NYLON TYPE  
 COLOR: NATU  
 \*C\*= NYLON TYPE  
 COLOR: NATU  
 \*D\*= NYLON 94V-2  
 COLOR: BLAC
- UNLESS OTHERWISE INDICATED, DIMENSIONS ARE FOR REFERENCE ONLY
- PLUG HOUSINGS MATE WITH THE FOLLOWING HOUSINGS:  
 - CAP HOUSINGS: 2.13 DIA.  
 - HEADER ASSEMBLY: 2.13 DIA. SERIES: 6
- HOUSINGS DESIGNED TO MATE WITH THE FOLLOWING PINS:  
 - PINS: 2.13 DIA. SERIES: 6  
 - SOCKETS: 2.13 DIA. SERIES: 6
- CONTACTS ARE ON 6.35 MM SPACING.
- PRODUCT SPECIFICATION: 6.35 MM
- FOR GLOW EIRE COMPATIBILITY, CONTACTS ARE ON 6.35 MM SPACING.
- DOCUMENT NO. SD-3664

QUALITY SYMBOLS		GENERAL TOLERANCES (UNLESS SPECIFIED)		DIMENSION STYLE	
	0 = 0	mm	± ----	MM ONLY	DATE
	0 = 0.070	INCH	± ----		8/7/11
	0 = 0.25		± 0.10		
	0 = 0.36		± 0.14		
			± ----		
			±		
DRAWING INFORMATION		DRAFT WHERE APPLICABLE MUST REMAIN WITHIN DIMENSIONS		MATERIAL NO.	
SEE SHEET 1		ANGULAR ± ----°		8/7/11	
EC NO: 1208-0003		DRAWN: GES		SIZE: THIS DRAWING CO	
2017/08/03		CHK'D: SNA GARAVENKA		A Z INCORPORATED AN	
2017/08/03		APP'R: KPRASAD			
2017/09/07		DESCRIPTION			
REV		D			

## Looking for pricing, stock, or lifecycle information?

Click below to explore more details on WIN SOURCE:

 [View 0050841040 on WIN SOURCE](#)

 [Molex, LLC Information](#)

## Optimize Your Supply Chain with WIN SOURCE Solutions

-  Global Sourcing Solution
-  Obsolete Management
-  Cost Control Management
-  Shortage Management
-  Alternative Solution
-  Excess Inventory Management