

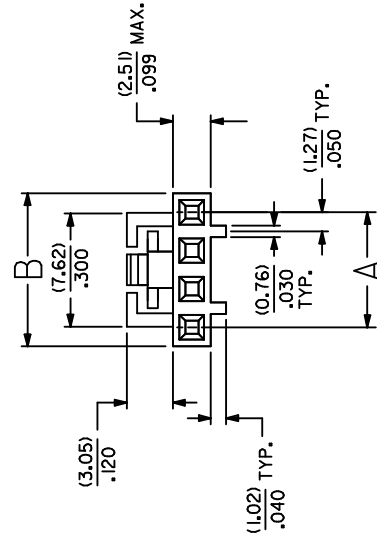


**THE DATASHEET OF**  
**0050579406**

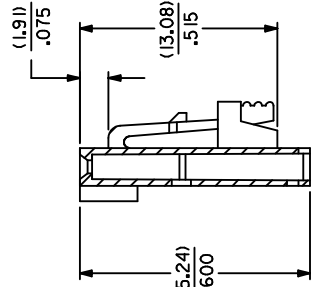
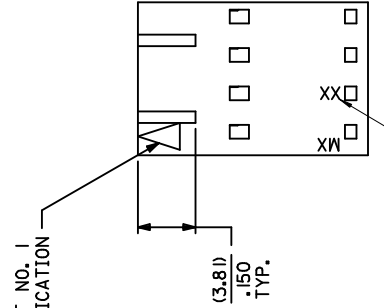


NOTES:

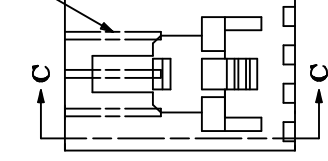
1. MATERIAL GLASS FILLED POLYESTER; UL94V-0; COLOR: BLACK.
2. HOUSING MAY BE USED WITH TERMINAL NUMBERS 70058 AND 71851.
3. REFER TO CHART FOR AVAILABLE CIRCUIT SIZES.
4. HOUSINGS TO BE USED WITH (0.64)/.025 SQUARE OR ROUND PINS.
5. HOUSING ARE STACKABLE END-TO-END ON (2.54)/.100 CENTERS.
6. REFER TO MOLEX PRODUCT SPECIFICATION(S): PS-70400, PS-70058, PS-71851, PS-70021, AND MOLEX APPLICATION SPECIFICATION SDES-70400.
7. PARTS MAY OR MAY NOT BE SUPPLIED WITH EXTERIOR CORE-OUT CONFIGURATION. REFER TO MOLEX DRAWING NUMBER SD-70066-\*\*\*\* FOR OPTIONAL HOUSING DETAILS.
8. DIMENSIONS ARE SHOWN FOR REFERENCE ONLY.
9. PACKAGE PER PK-70066-100.



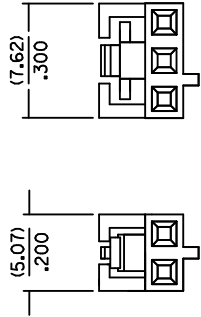
CIRCUIT NO. 1 IDENTIFICATION



OPTIONAL CORE-OUTS (SEE NOTE 7)



SECTION C-C



2 CIRCUIT

3 CIRCUIT

LATCH AND POLARIZATION RIB LOCATION

4 THROUGH 25 CIRCUIT HOUSINGS ARE AS SHOWN IN MAIN BODY OF DRAWING

PKT. SIZE	4
2	50
3	50
4	50
5	50
6	50
7	50
8	50
9	50
10	50
11	50
12	50
13	50
14	50
15	50
16	50
17	50
18	50
19	50
20	50
21	50
22	50
23	50
24	50
25	50

OPTION "G"

QUALITY SYMBOLS	GENERAL TOLERANCES (UNLESS SPECIFIED)	DIMENSION STYLE
$\nabla = 0$	MM INCH	MM/MIN
$\nabla = 0$	4 PLACES ± .010	DRAWN BY DMORGAN
$\nabla = 0$	3 PLACES ± .015	CHECKED BY WZ
	2 PLACES ± 0.25	DATE 2011/11/11
	1 PLACE ± 0.38	DATE 1986/03/28
	0 PLACE ±	DATE 2012/02/13
	ANGULAR ±1/2°	MATERIAL NO. ID
	DRAFT WHERE APPLICABLE MUST REMAIN WITHIN DIMENSIONS	SEE CHART
		SIZE THIS DRAWING CONTAINED AND INCORPORATED AND SH

DESCRIPTION	REV
LOCATE MOLD & CAVITY ID	M
EC NO: UCP2014-4216	
DRW:RWH/PLE 2014/04/11	
CHK:D/MORGAN 2014/04/11	
APP:SMILLER 2014/04/28	

## Looking for pricing, stock, or lifecycle information?

Click below to explore more details on WIN SOURCE:

 [View 0050579406 on WIN SOURCE](#)

 [Molex, LLC Information](#)

## Optimize Your Supply Chain with WIN SOURCE Solutions

-  Global Sourcing Solution
-  Obsolete Management
-  Cost Control Management
-  Shortage Management
-  Alternative Solution
-  Excess Inventory Management