



THE DATASHEET OF
0022284032





Part Number : [22053141](#)

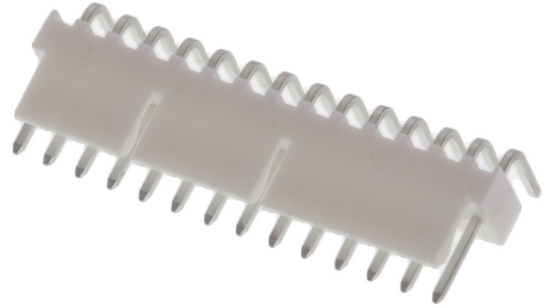
Product Description : KK 254 Solid Header, Right-Angle, with Friction Lock, 14 Circuits, Tin (Sn) Plating

Series Number : 7478

Status : Active

Product Category : PCB Headers and Receptacles

Engineering Number : A-7478-14A222



Documents & Resources

Drawings

[022053141_sd.pdf](#)

[PK-7478-001-000.pdf](#)

3D Models and Design Files

[022053141_stp.zip](#)

[SYM-22-05-3141-001.zip](#)

Specifications

[PS-10-07-001.pdf](#)

Product Environment Compliance

Compliance

GADSL/IMDS	Not Relevant
China RoHS	
EU ELV	Not Relevant
Low-Halogen Status	Low-Halogen per IEC 61249-2-21
REACH SVHC	Not Contained per D(2024)4144-DC (27 June 2024)
EU RoHS	Compliant per EU 2015/863

Multiple Part Product Compliance Statements

- Eu RoHS

- REACH SVHC

- Low-Halogen

Multiple Part Industry Compliance Documents

- IPC 1752A Class C
- IPC 1752A Class D
- Molex Product Compliance Declaration
- IEC-62474
- chemSHERPA (xml)

EU RoHS Certificate of Compliance

Part Details

General

Status	Active
Category	PCB Headers and Receptacles
Series	7478
Description	KK 254 Solid Header, Right-Angle, with Friction Lock, 14 Circuits, Tin (Sn) Plating
Application	Signal, Wire-to-Board
Component Type	PCB Header
Product Name	KK 254
UPC	800753592674

Agency

CSA	LR19980
UL	E29179

Electrical

Current - Maximum per Contact	4.0A
Voltage - Maximum	500V

Physical

Breakaway	No
Circuits (Loaded)	14
Circuits (maximum)	14
Color - Resin	Natural (White)
Durability (mating cycles max)	25

Flammability	94V-0
Glow-Wire Capable	No
Lock to Mating Part	Yes
Material - Metal	Brass
Material - Plating Mating	Tin
Material - Plating Termination	Tin
Material - Resin	Nylon
Net Weight	1.868/g
Number of Rows	1
Orientation	Right Angle
Packaging Type	Bag
PC Tail Length	3.58mm
PCB Locator	No
PCB Retention	None
PCB Thickness - Recommended	1.60mm
Pitch - Mating Interface	2.54mm
Pitch - Termination Interface	2.54mm
Plating min - Mating	5.080µm
Plating min - Termination	5.080µm
Polarized to Mating Part	Yes
Polarized to PCB	Yes
Shrouded	Partial
Stackable	Yes
Temperature Range - Operating	See Product Specification
Termination Interface Style	Through Hole

Solder Process Data

Max-Duration	5
Lead-Free Process Capability	WAVE
Max-Cycle	1
Max-Temp	235

Mates With / Use With



Mates with Part(s)

Description	Part Number
KK 254 Single Row Crimp Housings	<u>2695</u>
KK 254 PC Board Connector	<u>4455</u>
KK 254 Receptacle Housings	<u>7880</u>

This document was generated on Dec 12, 2024

Looking for pricing, stock, or lifecycle information?

Click below to explore more details on WIN SOURCE:

-  [View 0022284032 on WIN SOURCE](#)
-  [Molex, LLC Information](#)

Optimize Your Supply Chain with WIN SOURCE Solutions

-  Global Sourcing Solution
-  Obsolete Management
-  Cost Control Management
-  Shortage Management
-  Alternative Solution
-  Excess Inventory Management