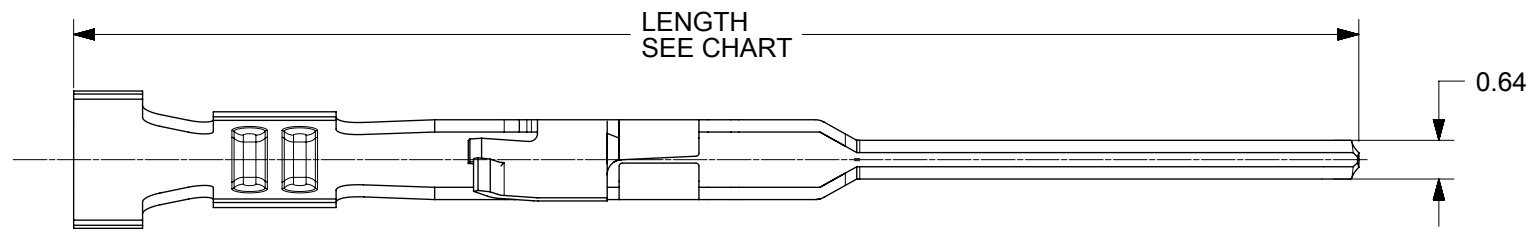




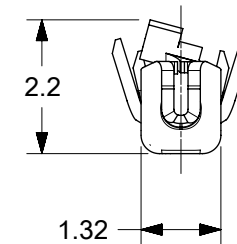
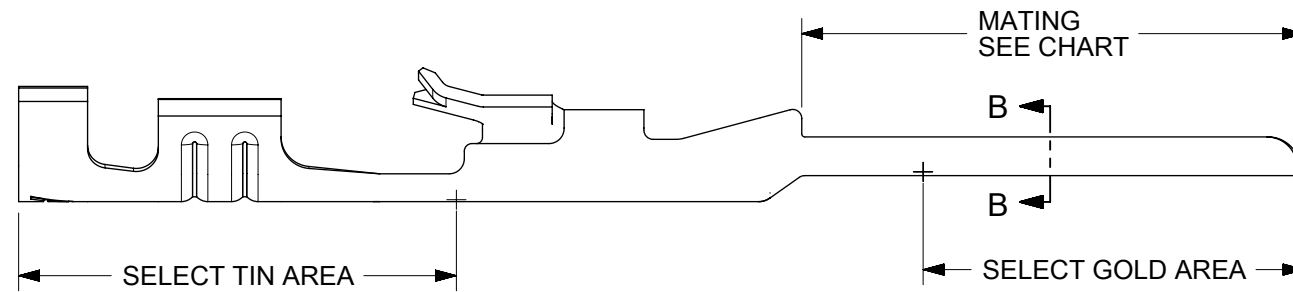
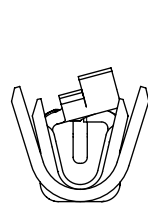
THE DATASHEET OF
0016020105





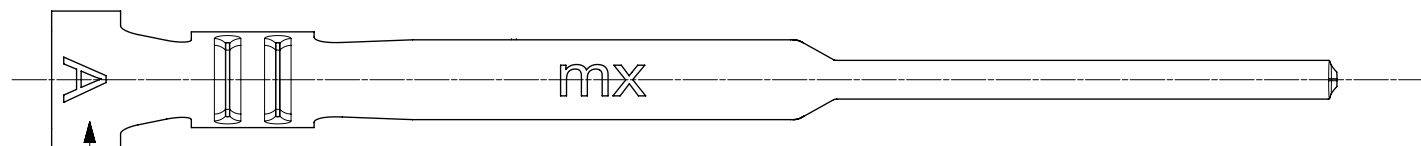
NOTES:

1. MATERIAL: 0.20 THICK PHOS BRONZE
2. FINISH:
 OVERALL TIN: 3.8 MICROMETERS MIN OVER NICKEL
 207 = SELECT GOLD IN AREA SHOWN: 0.38 MICROMETERS MIN
 SELECT TIN IN AREA SHOWN: 2.0 MICROMETERS MIN BOTH OVER NICKEL
 206 = SELECT GOLD IN AREA SHOWN: 0.75 MICROMETERS MIN
 SELECT TIN IN AREA SHOWN: 2.0 MICROMETERS MIN BOTH OVER NICKEL
3. PRODUCT SPECIFICATION: PS-70021
4. TERMINALS FOR USE WITH HOUSING SERIES: 70066 AND 70107



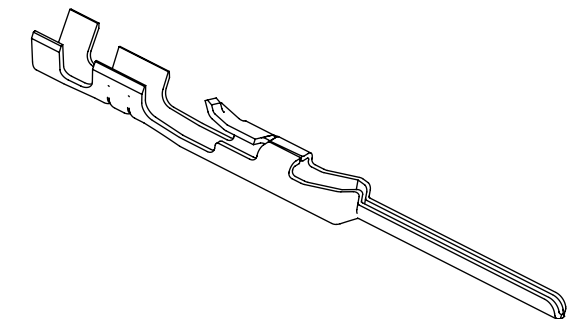
PLATING NOT REQUIRED ON INSIDE AREA

SECTION B-B
BACKGROUND OMITTED



WIRE SIZE IDENTIFICATION LETTER IS STAMPED INTO PART IN THIS AREA:

- A = 24-30 AWG WIRE WITH 1.52 MAX INSULATION DIA
 - B = 32-36 AWG WIRE WITH 0.64 MAX INSULATION DIA
 - C = 22-24 AWG WIRE WITH 1.63 MAX INSULATION DIA
- SEE CHART



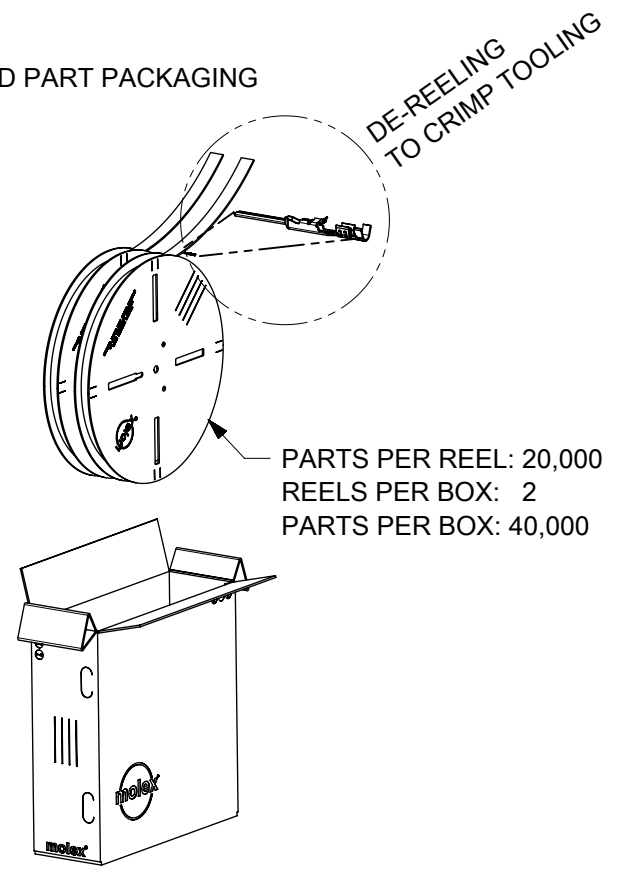
SYMBOLS	THIS DRAWING CONTAINS INFORMATION THAT IS PROPRIETARY TO MOLEX ELECTRONIC TECHNOLOGIES, LLC AND SHOULD NOT BE USED WITHOUT WRITTEN PERMISSION										
	DIMENSION UNITS		SCALE		CURRENT REV DESC: ADD PK SPEC				molex		
	mm		5:1								
	GENERAL TOLERANCES (UNLESS SPECIFIED)		EC NO: 615128				SL MALE CRIMP TERMINAL				
	ANGULAR TOL ± °		DRWN: GJEEVANSURES 2018/12/05								
	4 PLACES ±		CHK'D: SCS02 2019/04/05				PRODUCT CUSTOMER DRAWING				
	3 PLACES ±		APPR: ISHWARG 2019/04/05								
	2 PLACES ± 0.25		INITIAL REVISION:				DOCUMENT NUMBER		DOC TYPE	DOC PART	REVISION
	1 PLACE ± 0.35		DRWN: KSAMIEC 2017/09/01				700210000-SD		PSD	000	A5
	0 PLACES ± 0.0		APPR: FSMITH 2017/09/12				MATERIAL NUMBER		CUSTOMER		SHEET NUMBER
DRAFT WHERE APPLICABLE MUST REMAIN WITHIN DIMENSIONS		THIRD ANGLE PROJECTION		DRAWING	SERIES						
		B-SIZE		70021					1 OF 2		

TERMINAL STAMPED WITH LETTER "A" FOR USE WITH 24-30 AWG WIRE								
MATERIAL NO	ENGINEERING NO	PACKING	PLATING	LENGTH	MATING	STAMPED LETTER	WIRE SIZE	MAX INS. DIA
16020105	70021-0004	REEL	OVERALL TIN	21.39	8.43	A	24-30 AWG	1.52
16020108	70021-0204	LOOSE						
16020077	70021-0006	REEL	207 = 0.38 GOLD					
16020109	70021-0206	LOOSE						
16020078	70021-0008	REEL	206 = 0.75 GOLD					
16020110	70021-0208	LOOSE						

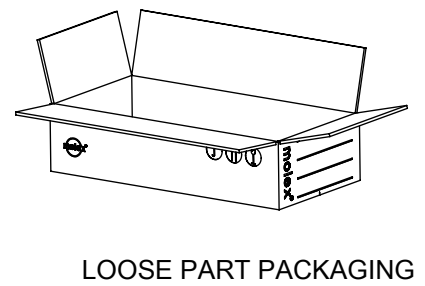
TERMINAL STAMPED WITH LETTER "C" FOR USE WITH 22-24 AWG WIRE								
MATERIAL NO	ENGINEERING NO	PACKING	PLATING	LENGTH	MATING	STAMPED LETTER	WIRE SIZE	MAX INS. DIA
16020107	70021-0021	REEL	OVERALL TIN	21.39	8.43	C	22-24 AWG	1.63
16020114	70021-0221	LOOSE						
16020081	70021-0023	REEL	207 = 0.38 GOLD					
16020115	70021-0223	LOOSE						
16020116	70021-0025	REEL	206 = 0.75 GOLD					
16020117	70021-0225	LOOSE						
700210117	70021-0117							
700210081	NA	NA	207 = 0.38 GOLD	19.61	6.65			
700211021	NA	NA	OVERALL TIN					
700211023	NA	REEL	206 = 0.75 GOLD					

TERMINAL STAMPED WITH LETTER "B" FOR USE WITH 32-36 AWG WIRE								
MATERIAL NO	ENGINEERING NO	PACKING	PLATING	LENGTH	MATING	STAMPED LETTER	WIRE SIZE	MAX INS. DIA
16020106	70021-0013	REEL	OVERALL TIN	21.39	8.43	B	32-36 AWG	0.64
16020111	70021-0213	LOOSE						
16020079	70021-0015	REEL	207 = 0.38 GOLD					
16020112	70021-0215	LOOSE						
16020080	70021-0017	REEL	206 = 0.75 GOLD					
16020113	70021-0217	LOOSE						

REELED PART PACKAGING



PARTS PER BAG: 6,000
 BAGS PER BOX: 2
 PARTS PER BOX: 12,000



SYMBOLS	THIS DRAWING CONTAINS INFORMATION THAT IS PROPRIETARY TO MOLEX ELECTRONIC TECHNOLOGIES, LLC AND SHOULD NOT BE USED WITHOUT WRITTEN PERMISSION											
	DIMENSION UNITS		SCALE		CURRENT REV DESC: ADD PK SPEC							
	mm		1:10		molex SL MALE CRIMP TERMINAL PRODUCT CUSTOMER DRAWING							
	GENERAL TOLERANCES (UNLESS SPECIFIED)											
	ANGULAR TOL		± °		EC NO: 615128 DRWN: GJEEVANSURES 2018/12/05 CHK'D: SCS02 2019/04/05 APPR: ISHWARG 2019/04/05							
	4 PLACES		±		INITIAL REVISION: DRWN: KSAMIEC 2017/09/01 APPR: FSMITH 2017/09/12							
	3 PLACES		±									
	2 PLACES		± 0.25		DOCUMENT NUMBER		DOC TYPE		DOC PART		REVISION	
	1 PLACE		± 0.35		700210000-SD		PSD		000		A5	
	0 PLACES		± 0.0		MATERIAL NUMBER		CUSTOMER		SHEET NUMBER			
DRAFT WHERE APPLICABLE MUST REMAIN WITHIN DIMENSIONS		THIRD ANGLE PROJECTION		DRAWING		SERIES		2 OF 2				

Looking for pricing, stock, or lifecycle information?

Click below to explore more details on WIN SOURCE:

 [View 0016020105 on WIN SOURCE](#)

 [Molex, LLC Information](#)

Optimize Your Supply Chain with WIN SOURCE Solutions

-  Global Sourcing Solution
-  Obsolete Management
-  Cost Control Management
-  Shortage Management
-  Alternative Solution
-  Excess Inventory Management