



THE DATASHEET OF
1063TR



THRU-HOLE (THM) & SURFACE MOUNT (SMT) COIN CELL HOLDERS

DESIGN ADVANTAGES...

- Reliable spring tension assures low contact resistance
- Retains battery securely to withstand shock and vibration
- All conductive polystyrene carrier tape meets ANSI/EIA - 481 standard

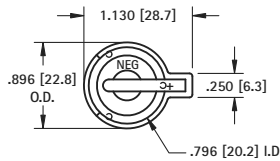
- Base material UL Rated 94V-0. Impervious to most industrial solvents
- Operating temperature range: -60°F to +293°F (-50°C to +145°C)

IDEALLY SUITED FOR...

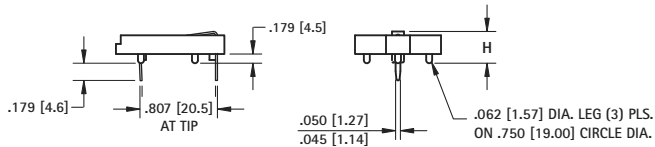
- Computer memory, power transfer and back-up systems
- Video and telecommunications power back-up
- Microprocessors and Microcomputer memory hold (desktop and laptop applications)

- Industrial and commercial security and alarm systems
- Communications power sources
- PC/104 applications

20mm THRU-HOLE MOUNT CON CELL HOLDER



- Advanced air-flow design enhances air circulation around battery
- Reliable spring tension assures low contact resistance
- Unique notched slots assure quick and easy battery insertion and replacement
- Retains battery securely to withstand shock and vibration

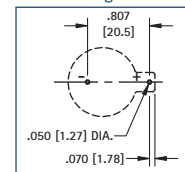


MATERIAL:

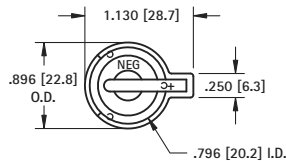
Contacts: .020 (.50) Spring Steel, Tin-Nickel Plate
Base: PBT, UL Rated 94V-0

CAT. NO.	G	H	L	O.D.	NO. OF CELLS	BATTERY REFERENCE
103	.100 (2.5)	.335 (8.5)	1.130 (28.7)	.896 (22.8)	(1) cell (any 20mm) (2) 2012, (2) 2016	BR2012, CR2012, CR2016, CL2016, DL2020, CL2025, BR2025, CR2032, CL2032
106	.100 (2.5)	.335 (8.5)	1.219 (31.0)	1.093 (27.8)	(1) cell (any 20mm) (2) 2012, (2) 2016	BR2012, CR2012, CR2016, CL2016, DL2020, CL2025, BR2025, CR2032, CL2032
1026	.100 (2.5)	.452 (11.5)	1.219 (31.0)	1.093 (27.8)	(2) 2020, (2) 2025, (2) 2032	DL2020, CR2020, CL2025, BR2025, CR2032, CL2032

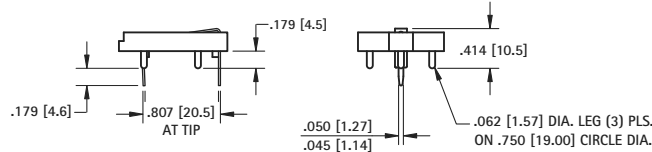
Mounting Detail



20mm RAISED MOUNT COIN CELL HOLDER



- Designed to maximize PC Board Capacity
- Unique raised mounting design allows components to be placed underneath the holder
- Ideal when board space is more important than board height; such as PC/104 applications

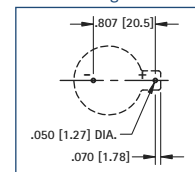


MATERIAL:

Contacts: .020 (.50) Spring Steel, Tin-Nickel Plate
Base: PBT, UL Rated 94V-0

CAT. NO.	BATTERY REFERENCE	NO. OF CELLS
101	BR2012, CR2016, CL2020, CR2025, CR2032	(1) cell (any 20mm) (2) 2012, (2) 2016

Mounting Detail

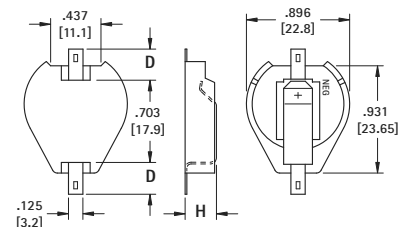


20mm SURFACE MOUNT COIN CELL HOLDER

AVAILABLE ON TAPE AND REEL



- Polarity clearly marked (+)
- Compatible with vacuum and mechanical pick & place assembly systems
- SMT solder tail with "Flow-Hole" design for increased joint strength
- Viewable solder tails assures reliable joint inspection
- Safe for all soldering & reflow operations



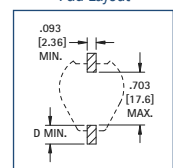
MATERIAL:

Contacts: .015 (.38) Steel
Base: High Temperature, Nylon 46, UL Rated 94V-0

Tin-Nickel Plate	Gold Plate (Flash)			D	H			BATTERY REFERENCE
CAT. NO. ON TAPE BULK & REEL	CAT. NO. ON TAPE BULK & REEL	CAT. NO. ON TAPE BULK & REEL	CAT. NO. ON TAPE BULK & REEL	PAD SIZE	HIEGHT	NO. OF CELLS		
1061	1061TR	1081	1081TR	.156 (4.0)	.290 (7.4)	(1) Cell (any 20mm) (2) 2012, (2) 2016		CR2012, CL2016, BR2020, DL2032, CR2032
1063	1063TR	1093	1093TR	.278 (7.1)		(2) 2020, (2) 2025, (2) 2032		
1062	1062TR	1082	1082TR	.156 (4.0)	.391 (9.9)	(3) 2012, (3) 2016		
1064	1064TR	1094	1094TR	.278 (7.1)				

Tape & Reel Spec's: 44mm wide; 32mm pitch; 13 inch reel (200 pieces per reel)

Pad Layout



Tel (718) 956-8900 • Fax (718) 956-9040
 (800) 221-5510 • kec@keyelco.com

KEYSTONE
 RoHS COMPLIANT ~ ISO 9001 CERTIFIED

www.keyelco.com
 31-07 20th Road - Astoria, NY 11105-2017

20mm COIN CELL HOLDERS

Looking for pricing, stock, or lifecycle information?

Click below to explore more details on WIN SOURCE:

-  [View 1063TR on WIN SOURCE](#)
-  [Keystone Electronics](#) Information

Optimize Your Supply Chain with WIN SOURCE Solutions

-  Global Sourcing Solution
-  Obsolete Management
-  Cost Control Management
-  Shortage Management
-  Alternative Solution
-  Excess Inventory Management