



THE DATASHEET OF
1062250001



MTP/MPO and LC Data Center Cable Solutions >

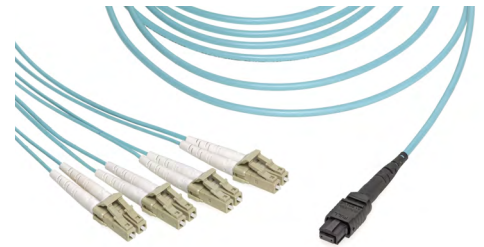
With high-density MTP/MPO and LC connectors, multiple cable configurations and integrated specialty components, Molex Data Center Cable Solutions support the integration of high-performance networks while reducing overall system cost and maintenance

FEATURES AND ADVANTAGES

Single-mode and multimode available
Support data rates across many applications



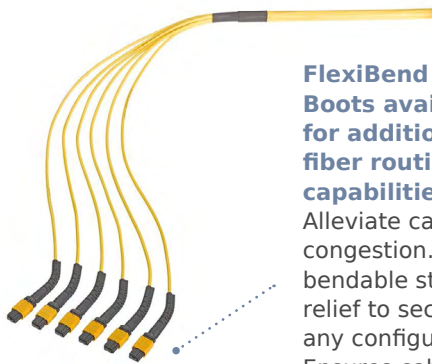
QSFP Assembly with MPO/MTP Connectors



MPO-to-4-LC Breakout Assembly

Industry standard MPO interface
Simplifies implementation. Compatible with other pre-installed cables

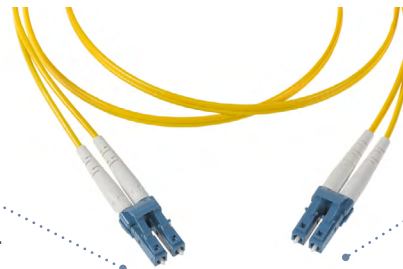
Push-pull connector housing
Provides quick and reliable connections



6 MPO/MTP Breakout

FlexiBend Boots available for additional fiber routing capabilities
Alleviate cable congestion. Offers bendable strain relief to secure any configuration. Ensures cable performance over multiple bends in various directions

Industry-standard LC connector housing
Simplifies implementation. Compatible with other pre-installed cables

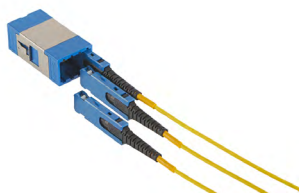


LCD-to-LCD Cable Assembly

Common and proven technologies combined in the LC connector system
Uni-boot or duplex boots are available for LC duplex connectors

Low-loss options available	Meets insertion-loss budgets
Cable assemblies 100% insertion-loss tested prior to shipping	Ensures high performance. Reduces customer installation time

ALSO AVAILABLE:



SN Adapters and Cable Assemblies



CS Adapters and Cable Assemblies



Coming Soon: MDC Adapters and Cable Assemblies

MTP/MPO and LC Data Center Cable Solutions >

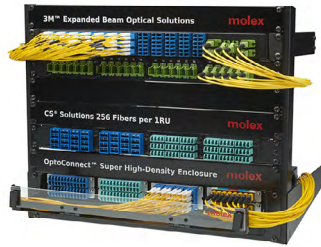
MARKETS AND APPLICATIONS

Telecommunications/Networking

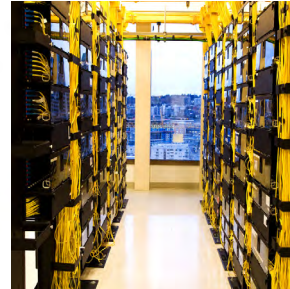
Optical transceivers
Optical switches and routers
Structural cabling

Data Centers

Servers



Data Center Rack



Data Center Servers

SPECIFICATIONS

MTP/MPO Cable Assemblies

Reference Information

Packaging: Individually bagged
Mates With: MPO Adapters/QSFP Transceivers
Use With: MPO Adapters/QSFP Transceivers
Designed In: Meters
RoHS: Yes
Halogen Free: TBD

Connector

Type:
MPO female, aqua for multi-mode
MPO female, yellow for single-mode low loss

Mechanical Properties

Fiber Count: 12 and 24 fiber options
Operating Temperature: -5 to +70°C
Durability (min.): 50 mating cycles

LC Cable Assemblies

Reference Information

Packaging: Individually bagged
Mates With: LC Adapters/SFP Transceivers
Use With: LC Adapters/SFP Transceivers
Designed In: Meters
RoHS: Yes
Halogen Free: Yes

Connector

Ferrule: Zirconia Ceramic
Housing: Plastic

Mechanical Properties

Operating Temperature: -5 to +70°C
Durability (min.): 250 mating cycles

Applies to Both LC and MPO Assemblies

Fiber

Multimode:
50/125 μm OM3 Bend-Insensitive
50/125 μm OM4 Bend-Insensitive
Single Mode:
OS2 ITU-T G.657.A1 Bend-Insensitive

MTP/MPO and LC Data Center Cable Solutions >

ORDERING INFORMATION

Product Family	Molex Product Number	Description	Fiber Type	Length
LC Cable Assemblies	<u>88537-1501</u>	LCD/UPC JPR SM BIF 2.0mm ZPCD PLN	SM	1.0m
	<u>88537-1503</u>			3.0m
	<u>88537-1505</u>			5.0m
	<u>88537-1510</u>			10.0m
	<u>88537-1520</u>			20.0m
	<u>88537-3501</u>	LCD JPR MM OM3 2.00m ZPCD PLNM	OM3	1.0m
	<u>88537-3503</u>			3.0m
	<u>88537-3505</u>			5.0m
	<u>88537-3510</u>			10.0m
	<u>88537-3520</u>			20.0m
	<u>88537-4501</u>	LCD JPR MM OM4 2.0mm ZPCD PLNM	OM4	1.0m
	<u>88537-4503</u>			3.0m
	<u>88537-4505</u>			5.0m
	<u>88537-4510</u>			10.0m
	<u>88537-4520</u>			20.0m

Product Family	Molex Product Number	Description	Fiber Type	Length
MPO QSFP — Cable Assemblies	<u>88536-6203</u>	MTP QSFP JMTP Jumper	SM	3.0m
	<u>88536-6205</u>			5.0m
	<u>88536-6210</u>			10.0m
	<u>88536-6215</u>	MTP QSFP-to-4X LCD		15.0m
	<u>88536-6503</u>			3.0m
	<u>88536-6505</u>	MTP QSFP Jumper	OM3	5.0m
	<u>88536-6703</u>			3.0m
	<u>88536-6705</u>			5.0m
	<u>88536-6710</u>			10.0m
	<u>88536-6715</u>	MTP QSFP-to-4x LCD		15.0m
	<u>88536-6803</u>			3.0m
	<u>88536-6805</u>			5.0m

MTP/MPO and LC Data Center Cable Solutions >

ORDERING INFORMATION

Product Family	Molex Product Number	Description	Fiber Type	Length
MPO Data Center Trunk Cables	<u>106225-0120</u>	MPO (F)-to- MPO (F) Trunk Cable 12F	SM	1.0m
	<u>106225-0121</u>			3.0m
	<u>106225-0122</u>			5.0m
	<u>106225-0123</u>			10.0m
	<u>106225-0124</u>			15.0m
	<u>106225-0100</u>		OM3	1.0m
	<u>106225-0101</u>			3.0m
	<u>106225-0102</u>			5.0m
	<u>106225-0103</u>			10.0m
	<u>106225-0104</u>			15.0m

www.molex.com/link/lc.html

www.molex.com/link/mpodatacentersolutions.html

Looking for pricing, stock, or lifecycle information?

Click below to explore more details on WIN SOURCE:

 [View 1062250001 on WIN SOURCE](#)

 [Molex, LLC Information](#)

Optimize Your Supply Chain with WIN SOURCE Solutions

-  Global Sourcing Solution
-  Obsolete Management
-  Cost Control Management
-  Shortage Management
-  Alternative Solution
-  Excess Inventory Management