



THE DATASHEET OF
0348241124





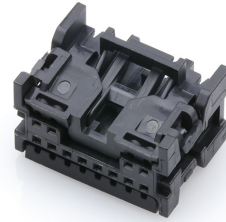
Part Number : [348241124](#)

Product Description : PROPOSED
REPLACEMENT: MINI50 GEN II UNSEALED
RECEPTACLES (206523 SERIES); Mini50
Unsealed Receptacle, Dual Row, Bridged, 12
Circuits, Polarization Option A, Black

Series Number : 34824

Status : New Business Not Supported

Product Category : Connector Housings



Documents & Resources

Product Environment Compliance

Compliance

| | |
|--------------------|---|
| GADSL/IMDS | Compliant |
| China RoHS | |
| EU ELV | Compliant per 2000/53/EC |
| Low-Halogen Status | Low-Halogen per IEC 61249-2-21 |
| REACH SVHC | Not Contained per D(2024)6225-DC (07 Nov 2024) |
| EU RoHS | Compliant per EU 2015/863 |

Multiple Part Product Compliance Statements

- Eu RoHS
- REACH SVHC
- Low-Halogen

Multiple Part Industry Compliance Documents

- IPC 1752A Class C
- IPC 1752A Class D
- Molex Product Compliance Declaration
- IEC-62474
- chemSHERPA (xml)

EU RoHS Certificate of Compliance

Part Details

General

| | |
|--------------|--|
| Status | New Business Not Supported |
| Category | Connector Housings |
| Series | 34824 |
| Description | PROPOSED REPLACEMENT: MINI50 GEN II UNSEALED RECEPTACLES (206523 SERIES); Mini50 Unsealed Receptacle, Dual Row, Bridged, 12 Circuits, Polarization Option A, Black |
| Application | Automotive, Power, Wire-to-Board |
| Product Name | Mini50 |
| UPC | 887191309439 |

Physical

| | |
|-------------------------------|----------------|
| Circuits (maximum) | 12 |
| Color - Resin | Black |
| Gender | Receptacle |
| Glow-Wire Capable | No |
| Keying to Mating Part | Yes |
| Lock to Mating Part | Yes |
| Material - Resin | PBT |
| Net Weight | 1.470/g |
| Number of Rows | 2 |
| Packaging Type | Bag |
| Panel Mount | No |
| Pitch - Mating Interface | 2.00mm |
| Pitch - Termination Interface | 2.00mm |
| Polarization | A |
| Polarized to Mating Part | Yes |
| Stackable | No |
| Temperature Range - Operating | -40° to +105°C |

Solder Process Data

| | |
|------------------------------|-----|
| Lead-Free Process Capability | N/A |
|------------------------------|-----|

Looking for pricing, stock, or lifecycle information?

Click below to explore more details on WIN SOURCE:

 [View 0348241124 on WIN SOURCE](#)

 [Molex, LLC Information](#)

Optimize Your Supply Chain with WIN SOURCE Solutions

-  Global Sourcing Solution
-  Obsolete Management
-  Cost Control Management
-  Shortage Management
-  Alternative Solution
-  Excess Inventory Management