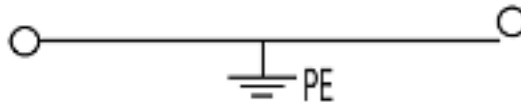
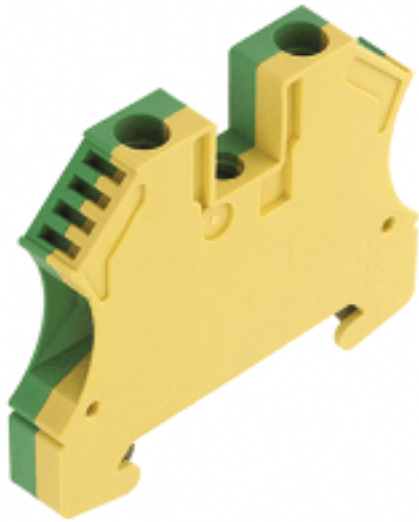




**THE DATASHEET OF
1010200000**





General ordering data

Order No.	1010200000
Part designation	WPE 6
Version	Earth terminal, 6 mm ² , Screw connection, Wemid, green/yellow, TS 35
EAN	4008190090098
Qty.	50 pc(s).

Product notes

Note, technical data	Conductor connection H07V-..10 and AWG 8 tighten with 1.4-1.6 Nm.
Product description	Their small size compared to the respective rated cross-section makes the modular terminals with the compact design very popular.
Note, accessories	Rail support for insulated installation of terminal rail "SH 2" order no. 0494920000 (10 pcs)

PT OKIECEEx/ATEX rating data

EU-type examination certificate	KEMA98ATEX1683U
Download, German	KEMA98ATEX1683U_d.pdf
Download English	KEMA98ATEX1683U_e.pdf
IECEX Certificate of Conformity	IECEXULD05.0008U
Download	IECEXULD05.0008U_e.pdf
ATEX conductor cross-section	6 mm ²
IECEX conductor cross-section	6 mm ²
Voltage when using cross-connections	CrossConnectionGuide.pdf
Operating temperature range	For operating temperature range see EC Design Test Certificate / IEC Ex-Certificate of Conformity
Marking EN 60079-7	Ex e II
Marking ATEX Directive 94/9/EC	Ex II 2 G D

Additional technical data

Colour of insulating material	green/yellow
Connection direction	on side
End plate required	No

Additional technical data

Explosion-tested version "Ex e"	Yes
Installation advice	TS 35
Insulating material	Wemid
Levels cross-connected internally	No
No. of identical terminals	1
No. of levels	1
No. of terminal strips per level	2
Open sides	closed
Operating temperature range	- 50 °C, + 120 °C
Product family	W-Series
Type of connection	Screwed
Type of mounting	Screwed
UL 94 flammability rating of insulation material	V-0
Version	PE terminal

CSA rating data

Min. cross-section (CSA)	AWG 20
Max. cross-section (CSA)	AWG 8

Conductors for clamping (rated connection)

Clamping range, min.	0.08 mm ²
Clamping range, max.	10 mm ²
Type of connection	Screw connection
2nd type of connection	screwed
Connection direction	on side
No. of connections	2
Stripping length	12 mm
Clamping screw	M 3.5
Blade size	4.0 x 0.8 mm
Tightening torque range	0.8...1.6 Nm
Gauge to IEC 60947-1	A5
Solid, min.	0.5 mm ²
Solid, max.	10 mm ²
Stranded, min.	1.5 mm ²
Stranded, max.	10 mm ²
Flexible, min.	0.5 mm ²
Flexible, max.	10 mm ²
Flexible with ferrule, min. (DIN 46228/1)	0.5 mm ²
Flexible with ferrule, max. (DIN 46228/1)	6 mm ²
Flexible, min., ferrule with plastic collar (DIN 46228 pt 4)	0.5 mm ²
Flexible, max., ferrule with plastic collar (DIN 46228 pt 4)	6 mm ²
AWG conductor size, min.	AWG 26
AWG conductor size, max.	AWG 8
AWG conductor size, min.	0.13 mm ²
AWG conductor size, max.	8.37 mm ²

Dimensions

Width	7.9 mm
Height of lowest version	47 mm

Dimensions

Length	56 mm
TS 35 offset	28 mm

PE rating data

Centre screw on PE terminals	M 3
PEN function	No
Pollution severity	3
Rated cross-section	6 mm ²
Rated impulse withstand voltage to adjacent terminal	8 kV
Rated short-time current	720 A (6 mm ²)
Rated voltage for adjacent terminal	800 V
Standards	IEC 60947-7-2
Tightening torque range for fixing screw	0.5...1.0 Nm

UL rating data

Min. cross-section (UL)	AWG 22
Max. cross-section (UL)	AWG 8

Approvals

Approvals institutes



Downloads

STEP	1010200000_09235_WPE_6_STP.stp
------	--------------------------------

Classifications

eClass 4.1	27-14-03-05
eClass 5.0	27-14-03-05
eClass 5.1	27-14-03-05

Similar products

Order No.	Part designation	Version
-----------	------------------	---------

1016500000	WPE 1.5/ZZ	Earth terminal, 1.5 mm ² , Screw connection, Wemid, green/yellow, TS 35
1036300000	WDK 2.5PE	Earth terminal, 2.5 mm ² , Screw connection, Wemid, green, TS 35
1010000000	WPE 2.5	Earth terminal, 2.5 mm ² , Screw connection, Wemid, green/yellow, TS 35
1016400000	WPE 2.5/1.5/ZR	Earth terminal, 2.5 mm ² , Screw connection, Wemid, green/yellow, TS 35
1010100000	WPE 4	Earth terminal, 4 mm ² , Screw connection, Wemid, green/yellow, TS 35
1905130000	WPE 4/ZZ	Earth terminal, 4 mm ² , Screw connection, Wemid, green/yellow, TS 35
1905120000	WPE 4/ZR	Earth terminal, 4 mm ² , Screw connection, Wemid, green/yellow, TS 35
1010300000	WPE 10	Earth terminal, 10 mm ² , Screw connection, Wemid, green/yellow, TS 35
1042500000	WPE 10/ZR	Earth terminal, 10 mm ² , Screw connection, Wemid, green/yellow, TS 35
1010400000	WPE 16	Earth terminal, 16 mm ² , Screw connection, Wemid, green/yellow, TS 35
1010500000	WPE 35	Earth terminal, 35 mm ² , Screw connection, Wemid, green/yellow, TS 35
1037300000	WPE 70/95	Earth terminal, 95 mm ² , Screw connection, Wemid, green/yellow, TS 35
1019700000	WPE 120/150	Earth terminal, 120 mm ² , Screw connection, Wemid, green/yellow, TS 35

Looking for pricing, stock, or lifecycle information?

Click below to explore more details on WIN SOURCE:

 [View 1010200000 on WIN SOURCE](#)

 [Weidmuller Information](#)

Optimize Your Supply Chain with WIN SOURCE Solutions

-  Global Sourcing Solution
-  Obsolete Management
-  Cost Control Management
-  Shortage Management
-  Alternative Solution
-  Excess Inventory Management