



**THE DATASHEET OF
10090768-S094LLF**



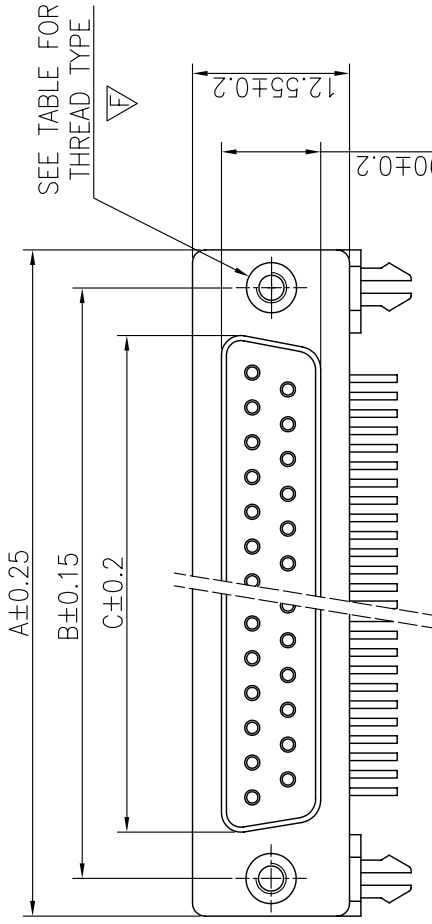
1 | 2

REMARK:
 1.CHARACTERISTICS:
 RATED VOLTAGE:
 RATED CURRENT:
 CONTACT RESIST:
 INSULATION RES:
 DIELECTRIC STRE:
 OPERATING TEMPE:
 INSERTION/EXTRA:
 MATING/UNMATING:
 2.MATERIAL:
 INSULATORS: GLA
 CONTACTS: COPPP

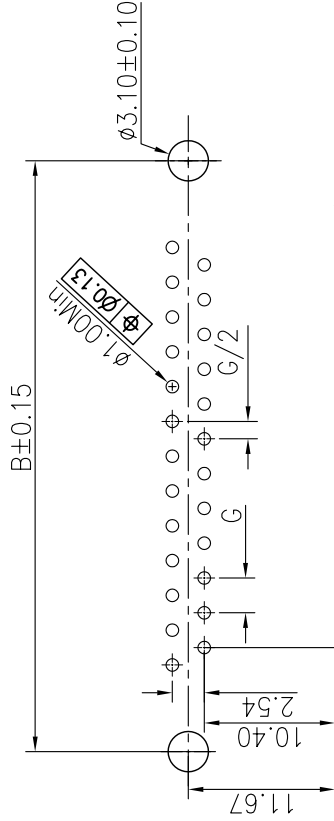
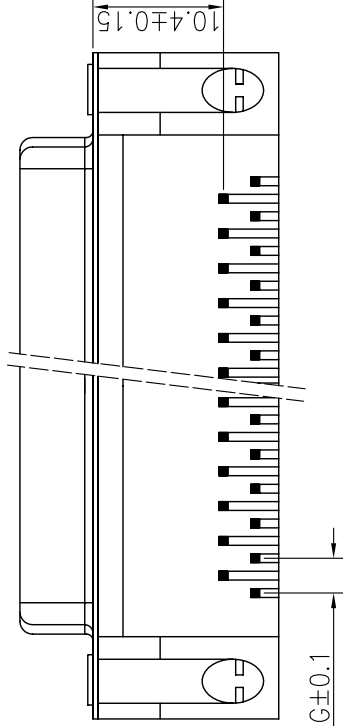
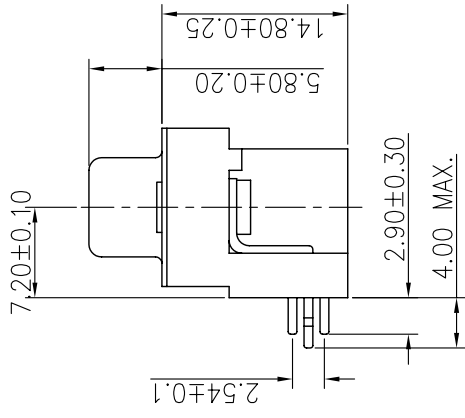
SHELL: STEEL,100,
 50

BOARD LOCK: CDF

3. PART NUMBER DE



7.90±0.2
 12.55±0.2



P.C.B LAYOUT
 t: 1.6±0.1MM

1 | 2

mat'l. code		tolerances unless otherwise specifie	
ltr	ecn no	dr	ddate
A	109-1033	J.H	3/12/09
B	109-1044	J.H	4/2/09
C	ELX-1-13433	AB	9/11/12
		dr	JASON HSU 3/
		enrg	JASON HSU 3/
		chr	ALIAS BABU 19/
		appd	MITHUN PAUL 19/
sheet	revision	C	C
index	sheet	1	2

ACAD

PDS: Rev

Tous droits strictement reserves. Reproduction ou communication a des tiers interdite sous quelque forme que ce soit sans autorisation écrite du propriétaire. Propriete de c FCI. Droits de reproduction FCI.



All rights strictly reserved. Reproduction or issue to third parties in any form whatever is not permitted without written authority from the proprietor. Property of FCI. Copyright FCI.

All rights strictly reserved. Reproduction or issue to third parties in any form whatever is not permitted without written authority from the proprietor. Property of FCI. Copyright FCI.



Tous droits strictement reserves. Reproduction ou communication a des tiers interdite sous quelque forme que ce soit sans autorisation écrite du propriétaire. Propriete de c FCI. Droits de reproduction FCI.

REMARK:
1.CHARACTERISTICS:
RATED VOLTAGE: 50V
RATED CURRENT: 5A
CONTACT RESISTANCE: 50mΩ
INSULATION RESISTANCE: 1000MΩ
DIELECTRIC STRENGTH: 500V/mm
OPERATING TEMPERATURE: -40°C to +125°C
INSERTION/EXTRAC MATING/UNMATING

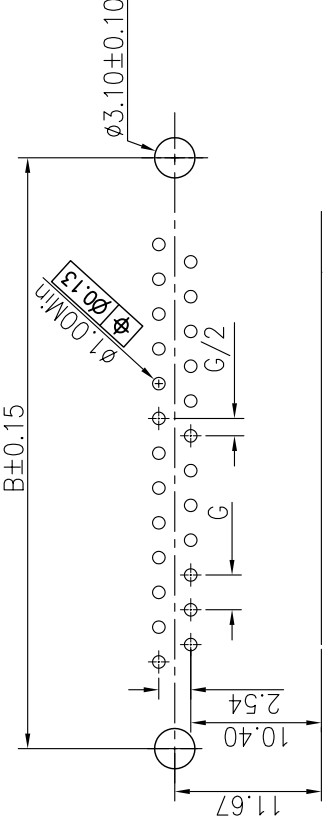
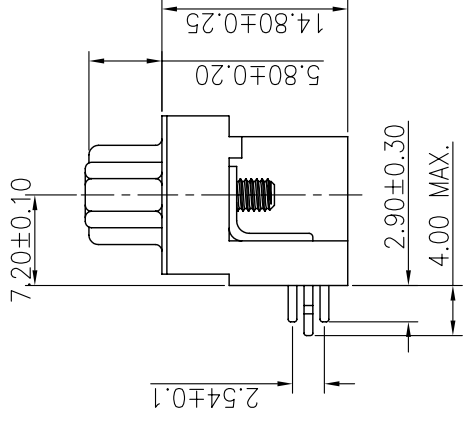
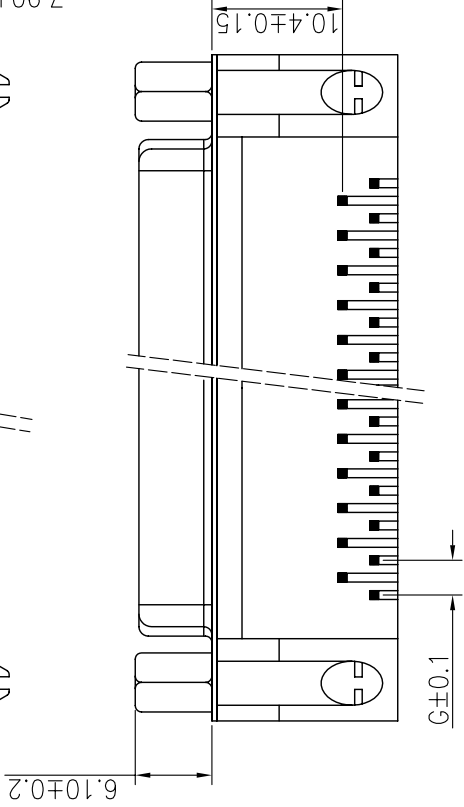
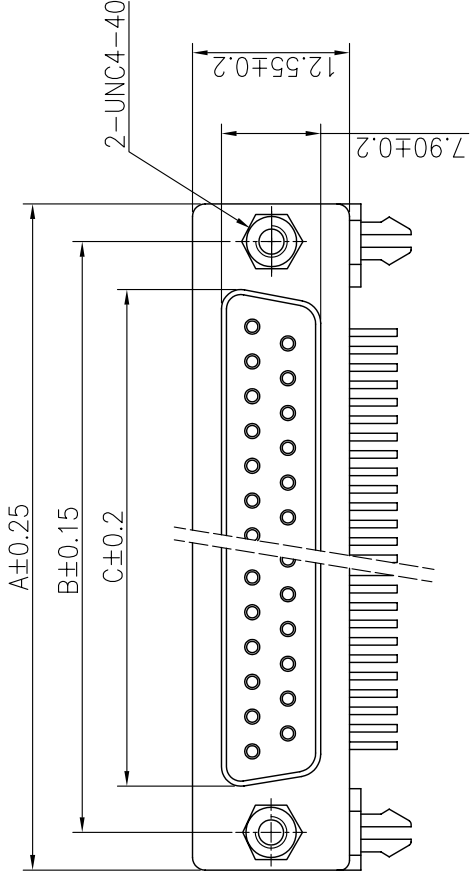
2.MATERIAL:
INSULATORS: GLASS
CONTACTS: COPPER

SHELL: STEEL, 1000500

BOARD LOCK: COPPER

SCREW LOCK: COPPER

3. PART NUMBER DESIGNATION



P.C.B LAYOUT
t: 1.6±0.1MM
P.C.B EDGE



mat'l. code		tolerances unless otherwise specified	
ltr	ecn no	linear	angles
C		.X ± 0	0° ±2°
		.XX ± 0	
		.XXX ± 0	
		dr	JASON HSU 16/
		enrg	JASON HSU 16/
		chr	ALIAS BABU 19/
		appd	MITHUN PAUL 19/
sheet index	revision sheet		

ACAD

PDS: Rev

Looking for pricing, stock, or lifecycle information?

Click below to explore more details on WIN SOURCE:

-  [View 10090768-S094LLF on WIN SOURCE](#)
-  [Amphenol Information](#)

Optimize Your Supply Chain with WIN SOURCE Solutions

-  Global Sourcing Solution
-  Obsolete Management
-  Cost Control Management
-  Shortage Management
-  Alternative Solution
-  Excess Inventory Management