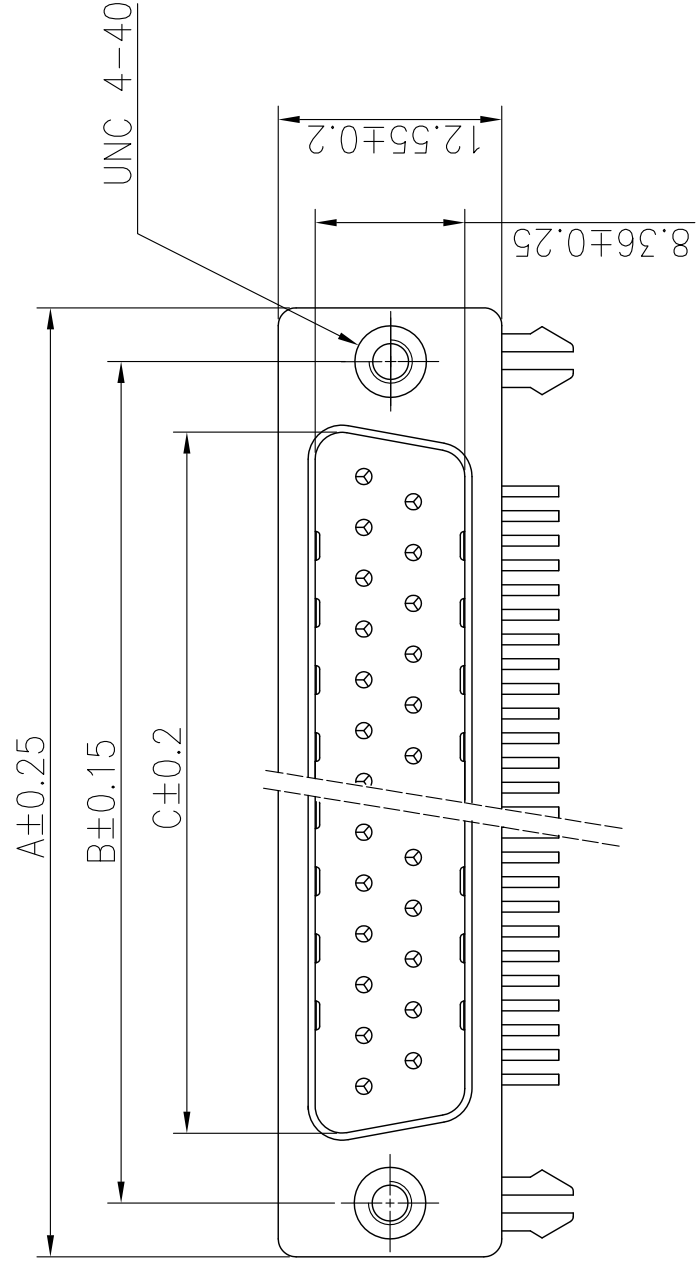
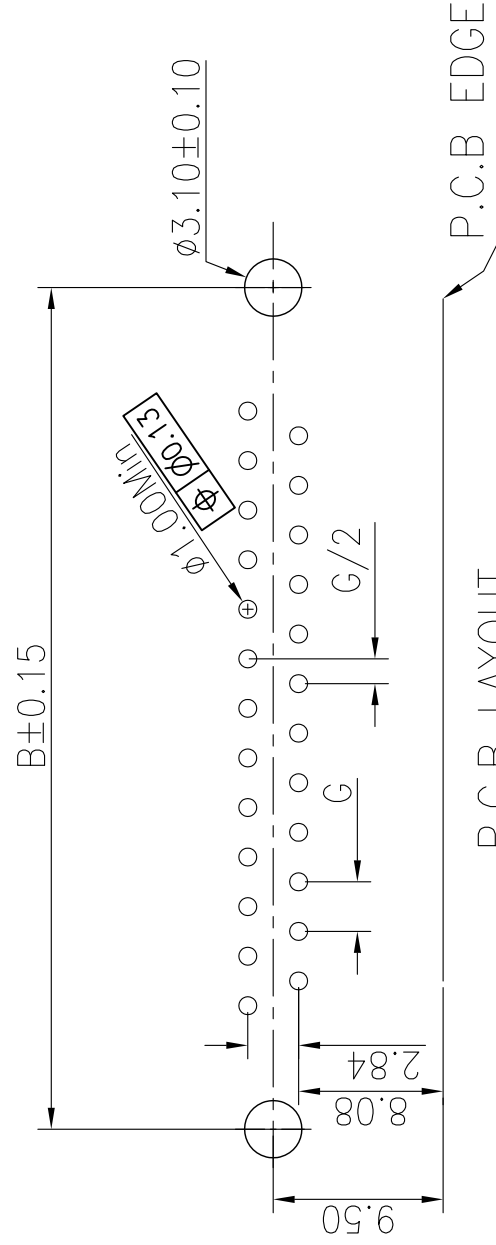
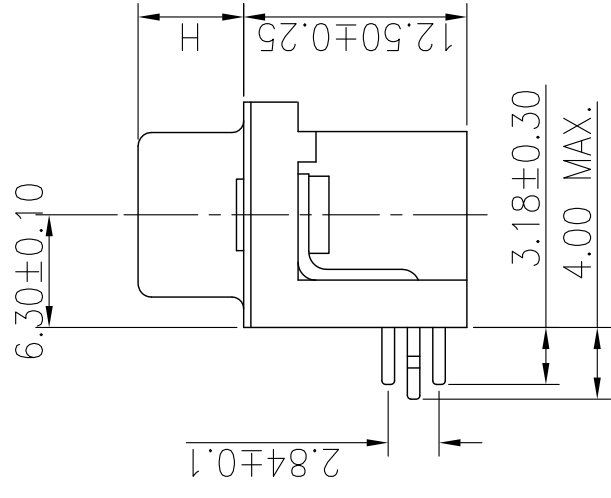
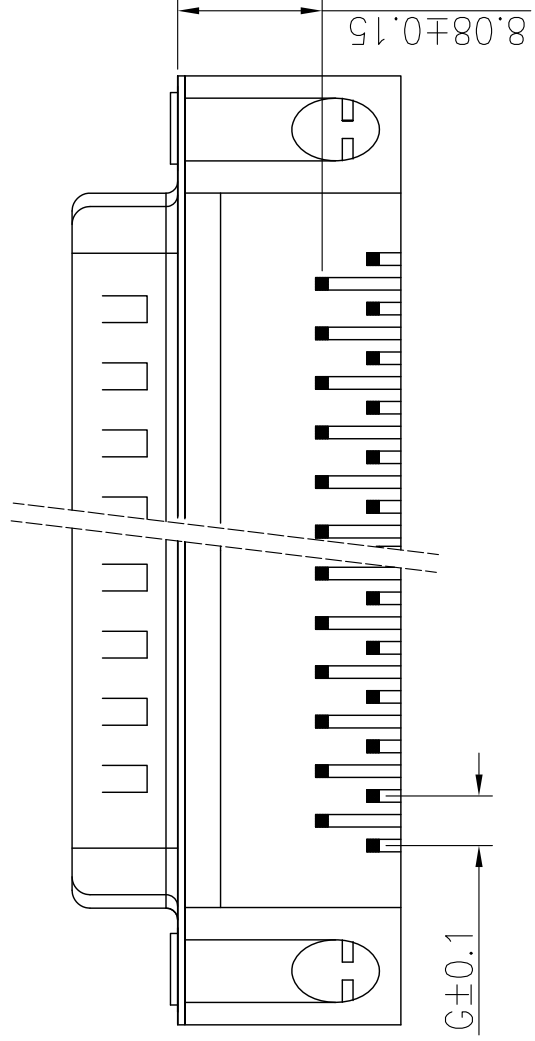


REMARK:  
 1.CHARACTERISTI:  
 RATED VOL  
 RATED CURR  
 CONTACT RE  
 INSULATION  
 DIELECTRIC  
 OPERATING  
 INSERTION/E  
 MATING/UNM  
 2.MATERIAL:  
 INSULATORS: G  
 CONTACTS: COP  
 SHELL: STEEL,  
 BOARD LOCK :  
 3.PART NUMBER I



12.55±0.2  
 8.36±0.25



P.C.B LAYOUT  
 t: 1.6±0.1mm

mat'l. code				tolerances unless otherwise specified	
ltr	ecn no	dr	date		
A	T09-1033	J.H	3/13/09	linear	.X ± 0
B	T09-1044	J.H	4/2/09		.XX ± 0
C	ELX-I-13433	A.B	9/11/12	angles	.XXX ± 0
D	ELX-I-15500	A.B	2013/08/21		0° ± 2°
				dr	JASON HSU 3/3/20
				enfr	ALIAS BABU 20
				chr	MITHUN PAUL 20
				appd	BIJU.K.PAUL 20
sheet index	revision	sheet	D	D	
			1	2	

ACAT

PDS: Rev : D





## Looking for pricing, stock, or lifecycle information?

Click below to explore more details on WIN SOURCE:

[View 10090097-P094VLF on WIN SOURCE](#)

[Amphenol Information](#)

## Optimize Your Supply Chain with WIN SOURCE Solutions

- ✓ Global Sourcing Solution
- ✓ Obsolete Management
- ✓ Cost Control Management
- ✓ Shortage Management
- ✓ Alternative Solution
- ✓ Excess Inventory Management