

Power Choke Coil

Series: **PCC-D124H (NX1)**

Low profile, High power, Low loss



■ Features

- High power, high inductance (No saturation performance limitation due to metal dust core)
(17 A to 32 A/1.25 μ H to 0.32 μ H)
- Low loss due to low R_{DC} (using flat wire)
- Low buzz noise due to its gap-less structure
- Surface mount, low profile
(H) 3.9 mm×(L)13.0 mm×(W)12.9 mm
- RoHS compliant

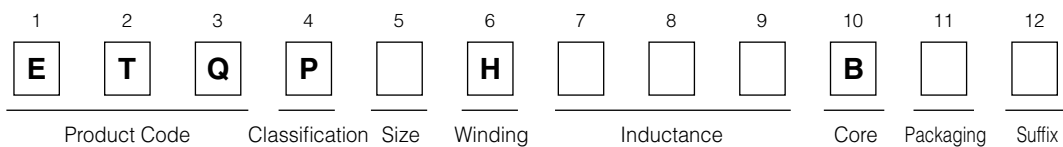
■ Recommended Applications

- DC-DC converter for CPU in PCs
- Thin on-board power supply modules for servers

■ Standard Packing Quantity

- 500 pcs./Reel

■ Explanation of Part Numbers



■ Standard Parts

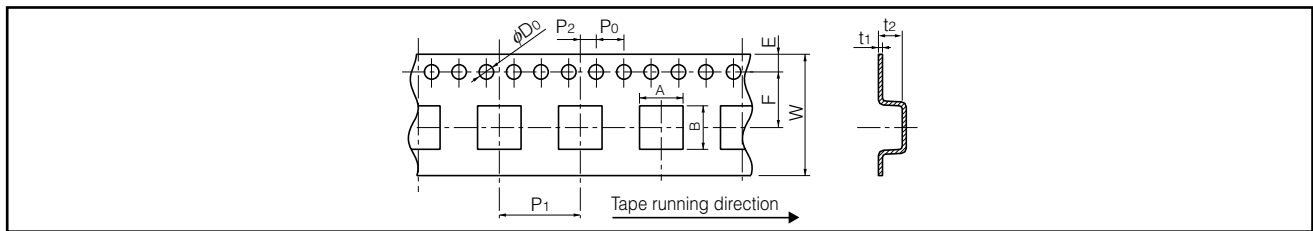
| Part No. | Inductance (at 20 °C)*1 | | | | | Rated current (A)*2 | DC resistance (at 20 °C) (m Ω) max. |
|--------------|-------------------------|---------------|-------------------------|----------------|-------------------------|---------------------|---|
| | L1 | | | L2 (Reference) | | | |
| | (μ H) | Tolerance (%) | Measurement current (A) | (μ H) | Measurement current (A) | | |
| ETQP3H0R4BFA | 0.36 | ±20 | 23 | 0.32 | 32 | 23 | 1.04 |
| ETQP3H0R8BFA | 0.80 | | 16 | 0.71 | 22 | 16 | 2.33 |
| ETQP3H1R4BFA | 1.43 | | 12 | 1.25 | 17 | 12 | 4.52 |

(*1) Inductance is measured at 100 kHz.

(*2) Rated current defines actual value of DC current, when temperature rise of coil becomes 40 K.

■ Packaging Methods (Taping)

● Embossed Carrier Tape Dimensions in mm (not to scale)



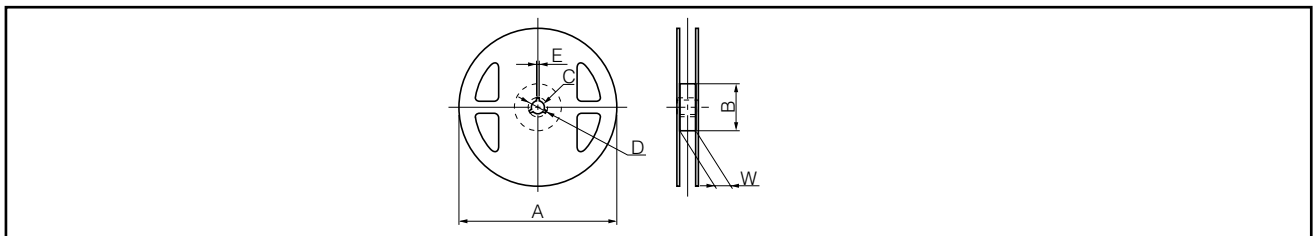
Power Choke Coils for high reliability use

| Series | A | B | W | E | F | P ₁ | P ₂ | P ₀ | φD ₀ | t ₁ | t ₂ | | | | | | | | |
|--|------|------|------|------|------|----------------|----------------|----------------|-----------------|----------------|----------------|------|-----|------|-----|-----|-----|-----|-----|
| PCC-M0530M | 5.6 | 6.1 | 16.0 | 1.75 | 7.5 | 12.0 | 2.0 | 4.0 | 1.5 | 0.4 | 3.3 | | | | | | | | |
| PCC-M0540M | | | | | | | | | | | 4.3 | | | | | | | | |
| PCC-M0630M | 7.1 | 6.6 | | | | | | | | | 16.0 | 1.75 | 7.5 | 12.0 | 2.0 | 4.0 | 1.5 | 3.3 | |
| PCC-M0645M | | | | | | | | | | | | | | | | | | 5.0 | |
| PCC-M0754M | 8.1 | 7.6 | | | | | | | | | 16.0 | 1.75 | 7.5 | 12.0 | 2.0 | 4.0 | 1.5 | 0.4 | 6.0 |
| PCC-M0854M/M0850M | 9.1 | 8.6 | | | | | | | | | | | | | | | | | |
| PCC-M1054M/M1050M PCC-M1050ML/M1060ML | 10.7 | 11.9 | 24.0 | 1.75 | 11.5 | 16.0 | 2.0 | 4.0 | 1.5 | 0.5 | 6.3 | | | | | | | | |

Power Choke Coils for consumer use

| Series | A | B | W | E | F | P ₁ | P ₂ | P ₀ | φD ₀ | t ₁ | t ₂ | | | | |
|------------|------|------|------|------|------|----------------|----------------|----------------|-----------------|----------------|----------------|------|------|-----|------|
| PCC-M0512W | 5.6 | 5.85 | 12.0 | 1.75 | 5.5 | 8.0 | 2.0 | 4.0 | 1.5 | 0.4 | 1.4 | | | | |
| PCC-M0630L | 7.1 | 8.0 | | | 7.5 | | | | | | 12.0 | 3.2 | | | |
| PCC-M0630W | 7.2 | 7.5 | 7.5 | | 12.0 | 3.3 | | | | | | | | | |
| PCC-M0730L | 7.6 | 8.9 | | | | 4.2 | | | | | | | | | |
| PCC-M074L | 7.6 | 8.9 | 7.5 | | 12.0 | 16.0 | | | | | 2.0 | 4.0 | 1.5 | 0.4 | 4.3 |
| PCC-M104W | 10.6 | 11.0 | | | | | | | | | | | | | 11.5 |
| PCC-M104L | 10.6 | 11.8 | 24.0 | 11.5 | 16.0 | 5.3 | | | | | | | | | |
| PCC-M125L | 13.1 | 14.8 | | | | 13.5 | 13.5 | 13.0 | 13.0 | 13.0 | | | | | 13.0 |
| PCC-D124H | 13.5 | 13.5 | 24.0 | 11.5 | 16.0 | | | | | | | | | | |
| PCC-D125H | | | | | | 13.0 | 13.0 | 24.0 | 11.5 | 16.0 | | | | | 13.0 |
| PCC-D126H | 13.0 | 13.0 | 24.0 | 11.5 | 16.0 | | | | | | 13.0 | 13.0 | 13.0 | 6.2 | |
| PCC-D126F | | | | | | 13.0 | 13.0 | 24.0 | 11.5 | 16.0 | | | | | 13.0 |
| PCC-F126F | 13.0 | 13.0 | 24.0 | 11.5 | 16.0 | | | | | | 13.0 | 13.0 | 13.0 | 6.2 | |

● Taping Reel Dimensions in mm (not to scale)



Power Choke Coils for high reliability use

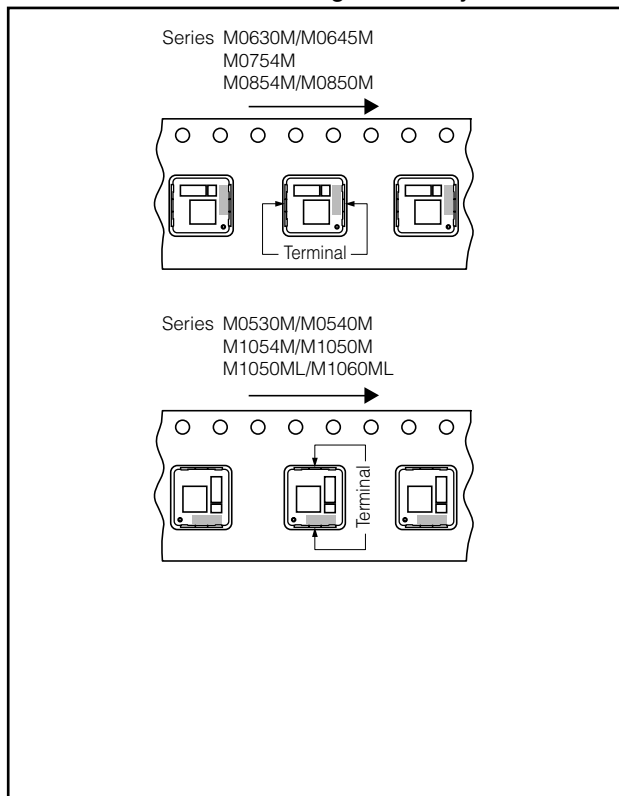
| Series | A | B | C | D | E | W |
|---|-----|-----|----|----|---|------|
| PCC-M0530M/M0540M PCC-M0630M/M0645M PCC-M0754M PCC-M0854M/M0850M | 330 | 100 | 13 | 21 | 2 | 17.5 |
| PCC-M1054M/M1050M PCC-M1050ML/M1060ML | | | | | | 25.5 |

Power Choke Coils for consumer use

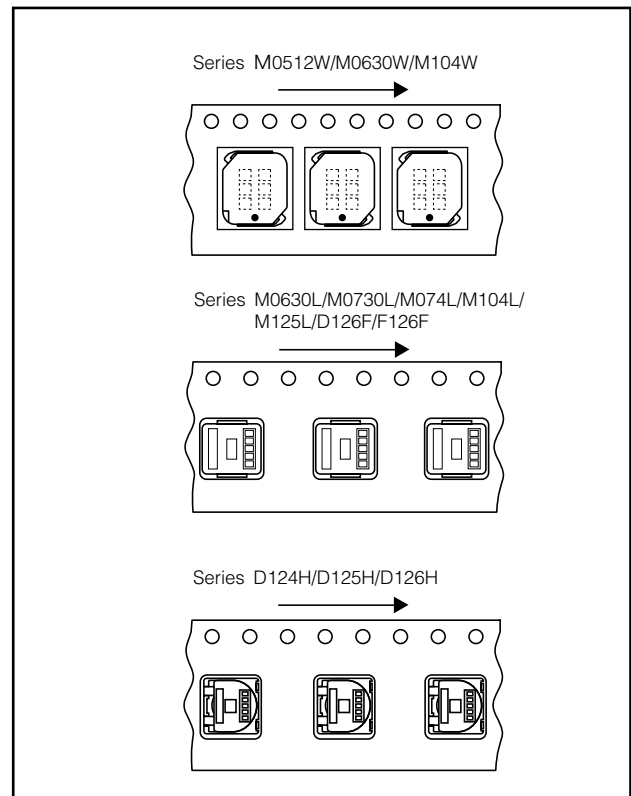
| Series | A | B | C | D | E | W |
|---|-----|------|----|----|---|------|
| PCC-M0512W | 330 | (80) | 13 | 21 | 2 | 13.5 |
| PCC-M0630L/M0630W | | 17.5 | | | | |
| PCC-M104W | | 25.5 | | | | |
| PCC-M0730L/M074L PCC-M104L | 380 | 80 | 13 | 21 | 2 | 17.5 |
| PCC-M125L/D124H/D125H/ D126H/D126F/F126F | | | | | | 25.4 |

■ Component Placement (Taping)

● Power Choke Coils for high reliability use



● Power Choke Coils for consumer use



■ Standard Packing Quantity/Reel

● Power Choke Coils for high reliability use

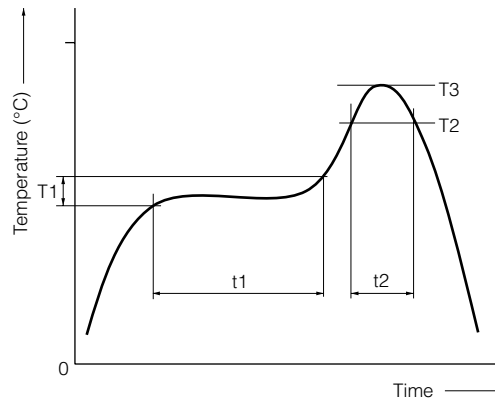
| Series | Minimum Quantity / Packing Unit | Quantity per reel |
|---------------------|---------------------------------|-------------------|
| PCC-M0530M/M0540M | 2000 pcs. / box (2 reel) | 1000 pcs. |
| PCC-M0630M | | |
| PCC-M0645M | 1000 pcs. / box (2 reel) | 500 pcs. |
| PCC-M0754M | | |
| PCC-M0854M/M0850M | | |
| PCC-M1054M/M1050M | | |
| PCC-M1050ML/M1060ML | | |

● Power Choke Coils for consumer use

| Series | Minimum Quantity / Packing Unit | Quantity per reel |
|------------|---------------------------------|-------------------|
| PCC-M0512W | 6000 pcs. / box (2 reel) | 3000 pcs. |
| PCC-M0730L | 3000 pcs. / box (2 reel) | 1500 pcs. |
| PCC-M074L | | |
| PCC-M0630L | 2000 pcs. / box (2 reel) | 1000 pcs. |
| PCC-M0630W | | |
| PCC-M104L | | |
| PCC-M104W | 1000 pcs. / box (2 reel) | 500 pcs. |
| PCC-M125L | | |
| PCC-D124H | | |
| PCC-D125H | | |
| PCC-D126H | | |
| PCC-D126F | | |
| PCC-F126F | | |

Soldering Conditions

■ Reflow soldering conditions



● Pb free solder recommended temperature profile Power Choke Coils for high reliability use

| Series | Preheat | | Soldering | | Peak Temperature | | Time of Reflow |
|---|------------|-----------|-----------|----------|------------------|--------------|----------------|
| | T1 [°C] | t1 [s] | T2 [°C] | t2 [s] | T3 | T3 Limit | |
| PCC-D1413H PCC-M0530M/M0540M PCC-M0630M/M0645M PCC-M0754M PCC-M0854M/M0850M PCC-M1054M/M1050M PCC-M1050ML/M1060ML | 150 to 170 | 60 to 120 | 230 °C | 30 to 40 | 250 °C, 5 s | 260 °C, 10 s | 2 times max. |

Power Choke Coils for consumer use

| Series | Preheat | | Soldering | | Peak Temperature | | Time of Reflow |
|---|------------|-----------|-----------|----------|------------------|--------------|----------------|
| | T1 [°C] | t1 [s] | T2 [°C] | t2 [s] | T3 | T3 Limit | |
| PCC-M0512W PCC-M0630L PCC-M0630W PCC-M0730L PCC-M074L PCC-M104L PCC-M104W PCC-M125L PCC-D124H PCC-D125H PCC-D126H PCC-D126F PCC-F126F | 150 to 170 | 60 to 120 | 230 °C | 30 to 40 | 250 °C, 5 s | 260 °C, 10 s | 2 times max. |

⚠ Safety Precautions

(Common precautions for Power Choke Coils for consumer use)

- When using our products, no matter what sort of equipment they might be used for, be sure to make a written agreement on the specifications with us in advance. The design and specifications in this catalog are subject to change without prior notice.
- Do not use the products beyond the specifications described in this catalog.
- This catalog explains the quality and performance of the products as individual components. Before use, check and evaluate their operations when installed in your products.
- Install the following systems for a failsafe design to ensure safety if these products are to be used in equipment where a defect in these products may cause the loss of human life or other significant damage, such as damage to vehicles (automobile, train, vessel), traffic lights, medical equipment, aerospace equipment, electric heating appliances, combustion/gas equipment, rotating equipment, and disaster/crime prevention equipment.
 - * Systems equipped with a protection circuit and a protection device
 - * Systems equipped with a redundant circuit or other system to prevent an unsafe status in the event of a single fault

⚠ Precautions for use

1. Provision to abnormal condition

This power choke coil itself does not have any protective function in abnormal condition such as overload, short-circuit and open-circuit conditions, etc.

Therefore, it shall be confirmed as the end product that there is no risk of smoking, fire, dielectric withstand voltage, insulation resistance, etc. in abnormal conditions to provide protective devices and/or protection circuit in the end product.

2. Temperature rise

Temperature rise of power choke coil depends on the installation condition in end products. It shall be confirmed in the actual end product that temperature rise of power choke coil is in the limit of specified temperature class.

3. Dielectric strength

Dielectric withstanding test with higher voltage than specific value will damage Insulating material and shorten its life.

4. Water

This Power choke coil must not be used in wet condition by water, coffee or any liquid because insulation strength becomes very low in the condition.

5. Potting

If this power choke coil is potted in some compound, coating material of magnet wire might be occasionally damaged. Please ask us if you intend to pot this power choke coil.

6. Detergent

Please consult our company in case of this because the confirmation of reliability etc. is needed when the washing is used for the power choke coil.

7. Storage temperature

-5 °C to +35 °C

8. Operating temperature

Minimum temperature : -40 °C(Ambient temperature of the power choke coil)

Maximum temperature : 130 °C(Ambient temperature of the power choke coil plus the temperature rise)

100 °C(Only series : PCC-F126F(N6))

9. Model

When this power choke coil was used in a similar or new product to the original one, sometimes it might be unable to satisfy the specifications due to difference of condition of usage.

Please ask us if you would use this power choke coil in the manner such as above.

10. Drop

If the power choke coil suffered mechanical stress such as drop, characteristics may become poor (due to damage on coil bobbin, etc.). Never use such stressed power choke coil.



<Package markings>

Package markings include the product number, quantity, and country of origin.

In principle, the country of origin should be indicated in English.

Looking for pricing, stock, or lifecycle information?

Click below to explore more details on WIN SOURCE:

-  [View ETQ-P3H0R8BFA on WIN SOURCE](#)
-  [Panasonic Information](#)

Optimize Your Supply Chain with WIN SOURCE Solutions

-  Global Sourcing Solution
-  Obsolete Management
-  Cost Control Management
-  Shortage Management
-  Alternative Solution
-  Excess Inventory Management