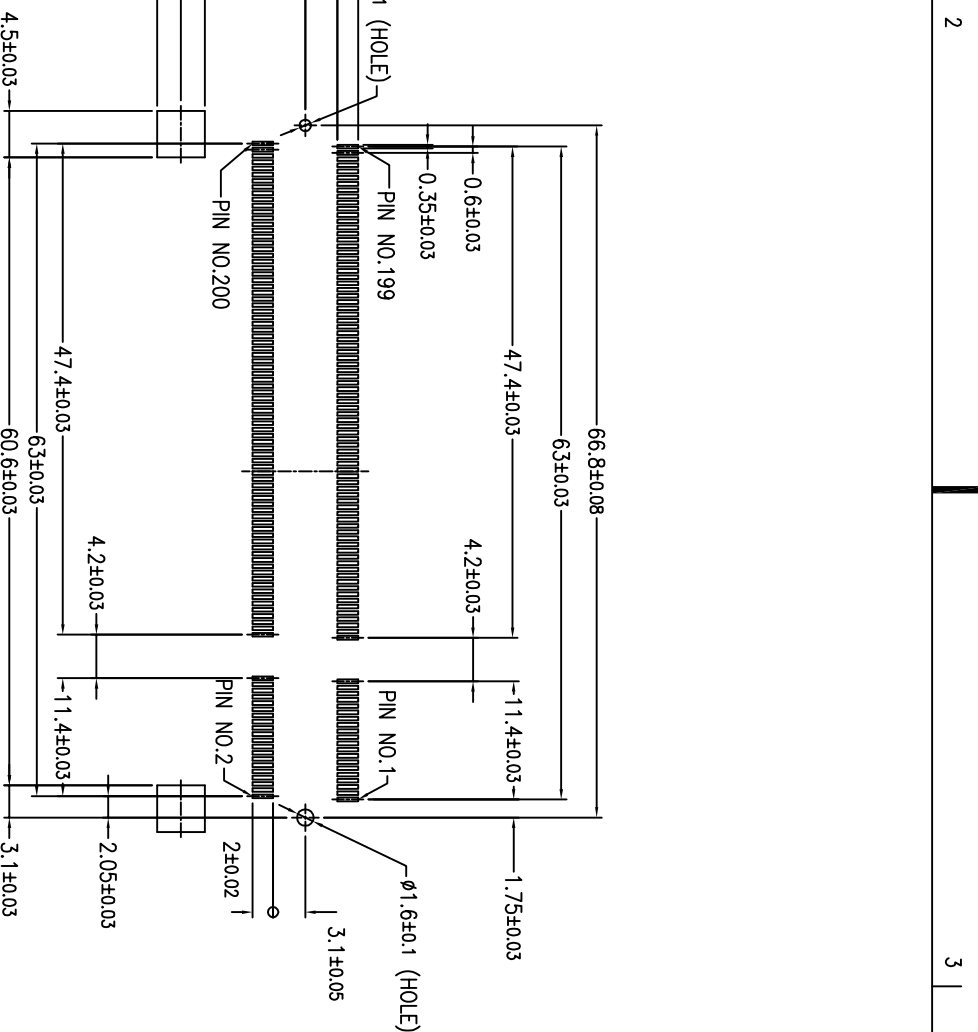







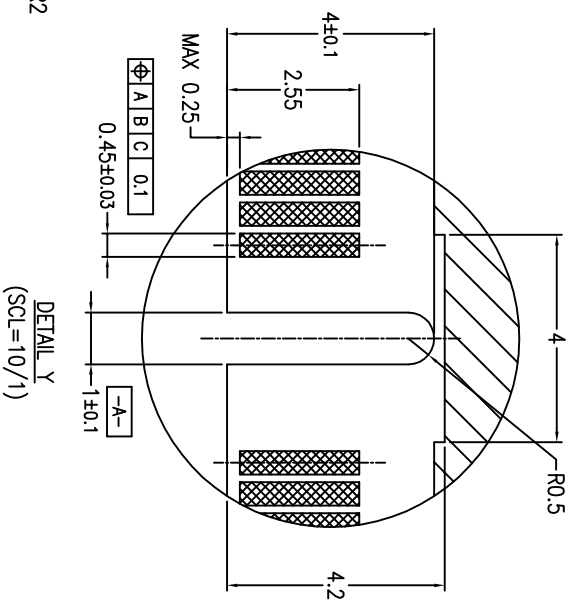
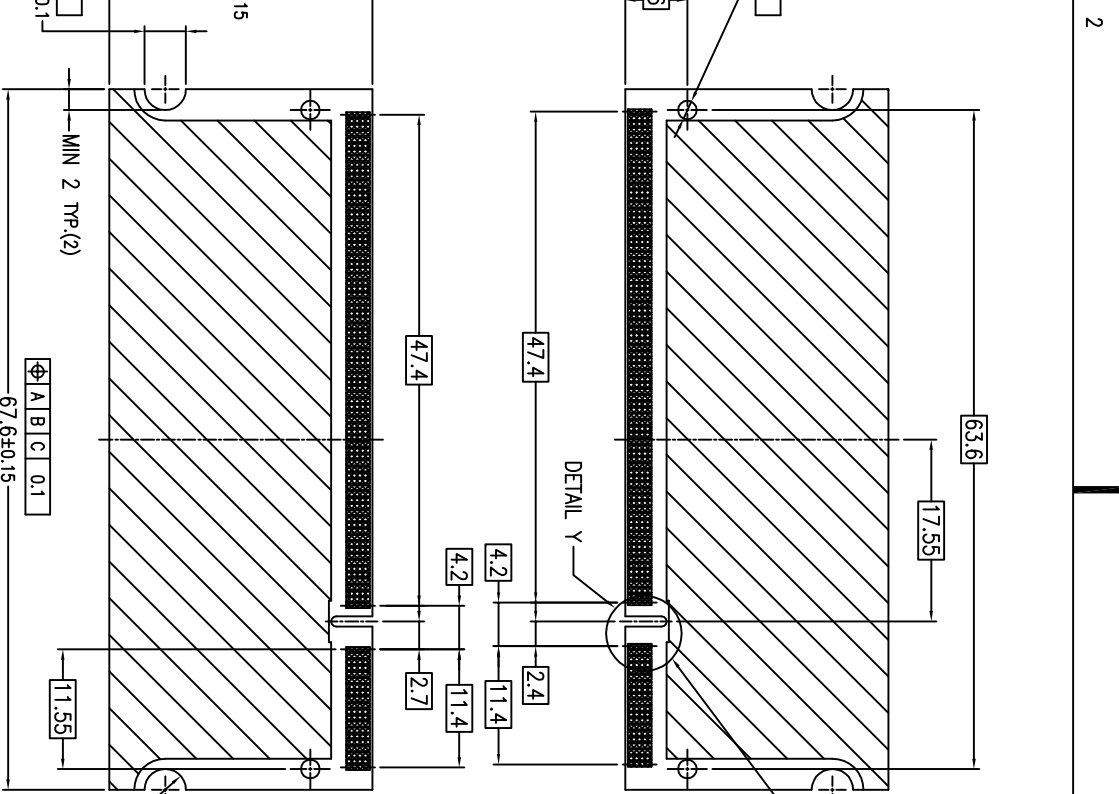
**THE DATASHEET OF
10033853-052ASLF**





RECOMMENDED MOUNTING P.C.B. LAYOUT

mat'l. code		tolerances unless otherwise specified		CUSTOMER COPY		 www.fciconnect.com	
ltr	ecn no	dr	date	linear	.XX ± 0.20	projection	title
D					± 0.10	 MM	DDR II 0.6 mm PITCH 200 POS. STANDARD TYPE ASS'Y
				angles	0° ±5°	 scale	product family 50UF SO-DIMM size1 dwg no
				dr	M.Hasegawa	6/29/04	code
				engr	M.Hasegawa	6/29/04	JP
				chr			sheet
				appd			2 of
sheet	revision						
index	sheet						





ENDED MODULE P.C.B. LAYOUT

mat'l. code		tolerances unless otherwise specified		CUSTOMER COPY		FCJ		www.fcjconnect.com	
ltr	ecn no	dr	date	linear	projection	title			
D				.XX ± 0.10		DDR II 0.6 mm PITCH 200 POS. STANDARD TYPE ASS'Y			
				angles	0° ±5°	product family SOUF SO-DIMM code			
				dr	M.Hasegawa	6/29/04	size dwg no		
				engr	M.Hasegawa	6/29/04	10033853		
				chr			code		
				appd			JP		
sheet	revision			scale	2:1	sheet			
index	sheet					3 of			

Looking for pricing, stock, or lifecycle information?

Click below to explore more details on WIN SOURCE:

-  [View 10033853-052ASLF on WIN SOURCE](#)
-  [Amphenol Information](#)

Optimize Your Supply Chain with WIN SOURCE Solutions

-  Global Sourcing Solution
-  Obsolete Management
-  Cost Control Management
-  Shortage Management
-  Alternative Solution
-  Excess Inventory Management