



**THE DATASHEET OF
10017963-E050TLF**



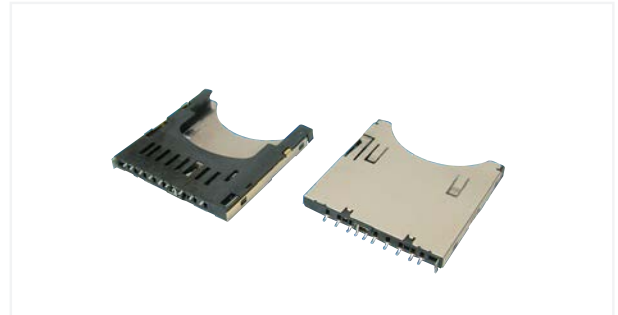
SD MEMORY CARD CONNECTOR

For CMD Market

OVERVIEW

The Top mount SD Memory Card Connector for CMD (Car Multimedia Device) market provide a more durable solution for dashboard and vehicular entertainment devices applications. It is shock proof and able to withstand vibrations.

The robust design can also be applied in the Industrial & Instrumentation market.



FEATURES & BENEFITS

- Vibration & shock-proof
 - Push-push locking system
- Enhanced durability
 - 12,000 push-push cycles endurance VS 10K for general SD card connector
- Copyright Protection
 - Switch presence for write protection
- EMI function
 - Shielded
- Capacious temperature range for vehicular work environment
 - - 40°C to 105°C
- RoHS compatible

TARGET MARKETS/APPLICATIONS

- Audio, Visual, Document devices for CMD Market
 - Provides data for navigation systems, GPS
 - Vehicular radio
 - Potentially replaces DVD players
- The robust design can also be applied in the I&I Market
- High performance consumer products market





TECHNICAL INFORMATION

MATERIALS

- Contact: Copper alloy
- Contact area: Gold over nickel
- Solder tail area: Matte tin over nickel
- Shield: Stainless steel
- Housing: High temperature thermal plastics

ELECTRICAL PERFORMANCE

- Electrical withstanding voltage: 500V AC 60 sec
- Insulation resistance: 1000m Ω initial, 100m Ω after test
- Contact resistance: 100m Ω max. initial, + 20m Ω after life

ENVIRONMENTAL

- Functional temperature range: -40°C to 105°C Environmental tests

PART NUMBERS

Number Of Positions	Part Number
With plastic peg	10067847-001RLF
Without plastic peg	10067847-011RLF

MECHANICAL PERFORMANCE

- Max insertion force : 12 N
- Durability cycling : 12,000 cycles
- Vibration : 10~1000Hz, acceleration 2g, 8 hours per axis, no more than 1 μ sec discontinuity
- Shock: acceleration 50g, 50 shocks per axis, no more than 1 μ sec discontinuity

SPECIFICATIONS

- GS-12-497 product specification

APPROVALS AND CERTIFICATIONS

- Major automobile makers



PACKAGING

- Tape and reel

BWBSDMMC0613EA4

Looking for pricing, stock, or lifecycle information?

Click below to explore more details on WIN SOURCE:

-  [View 10017963-E050TLF on WIN SOURCE](#)
-  [Amphenol Information](#)

Optimize Your Supply Chain with WIN SOURCE Solutions

-  Global Sourcing Solution
-  Obsolete Management
-  Cost Control Management
-  Shortage Management
-  Alternative Solution
-  Excess Inventory Management