



**THE DATASHEET OF
1212080070**





Part Number : [1212080070](#)

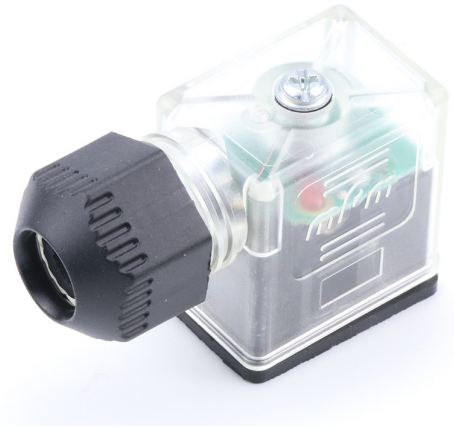
Product Description : mPm DIN Valve Connector, Form B-11mm, External Thread, 2 Pole Plus Ground with C4 Circuit, 24V, Red LED + VDR, Transparent, Integrated Nitrile Gasket, Single Bag, Unmounted

Series Number : 121208

Status : Active

Product Category : Circular Industrial Connectors

Engineering Number : S22200TC420R



Documents & Resources

Drawings

[1212080070_sd.pdf](#)

Specifications


[PK-121208-S22-001.pdf](#)

[PS-121201-001-001.pdf](#)

[STR-1251-001.pdf](#)

Product Environment Compliance

Compliance

GADSL/IMDS	Not Relevant
China RoHS	
EU ELV	Not Relevant
Low-Halogen Status	Low-Halogen per IEC 61249-2-21
REACH SVHC	Contains Lead per D(2023)8585-DC (23 Jan 2024)
EU RoHS	Compliant with Exemption 6(c) per EU 2015/863

[Multiple Part Product Compliance Statements](#)

- Eu RoHS
- REACH SVHC
- Low-Halogen

[Multiple Part Industry Compliance Documents](#)

- IPC 1752A Class C
- IPC 1752A Class D
- Molex Product Compliance Declaration
- IEC-62474
- chemSHERPA (xml)

EU RoHS Certificate of Compliance

Part Details

General

Status	Active
Category	Circular Industrial Connectors
Series	121208
Description	mPm DIN Valve Connector, Form B-11mm, External Thread, 2 Pole Plus Ground with C4 Circuit, 24V, Red LED + VDR, Transparent, Integrated Nitrile Gasket, Single Bag, Unmounted
IP Rating	IP67
Product Name	mPm
Type	Field Attachable Connector
UPC	884982509887

Electrical

Current - Maximum per Contact	16.0A
Voltage - Maximum	24V

Physical

Cable Diameter	4.00-9.00mm (.157-.354")
Coupling Type	External Thread
Diagnostics / LEDs	Yes
Diagnostics Port	No
Form	B - 11mm
Gender	N/A
Keyway	None
Material - Connector Body	Polyamide
Material - Contact	Brass

Material - Coupling Nut	N/A
Material - Plating Mating	Silver
Net Weight	21.700/g
Orientation	90° Angle
Pitch - Mating Interface	11.00mm
Poles	2
Temperature Range - Operating	-40°C to +90°C
Wire Size (AWG)	16

This document was generated on Nov 04, 2024

Looking for pricing, stock, or lifecycle information?

Click below to explore more details on WIN SOURCE:

 [View 1212080070 on WIN SOURCE](#)

 [Molex, LLC Information](#)

Optimize Your Supply Chain with WIN SOURCE Solutions

-  Global Sourcing Solution
-  Obsolete Management
-  Cost Control Management
-  Shortage Management
-  Alternative Solution
-  Excess Inventory Management