

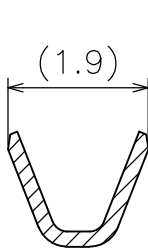
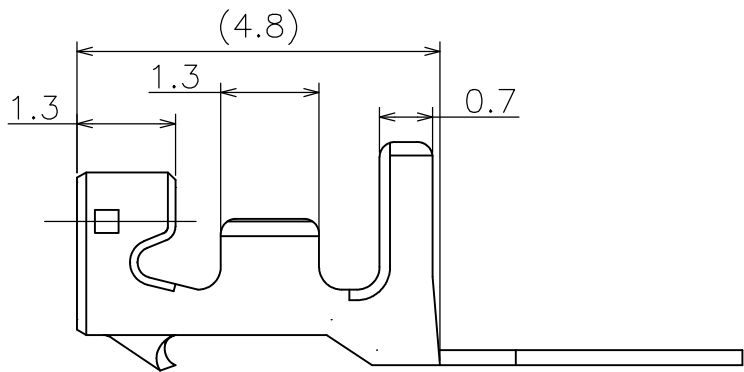
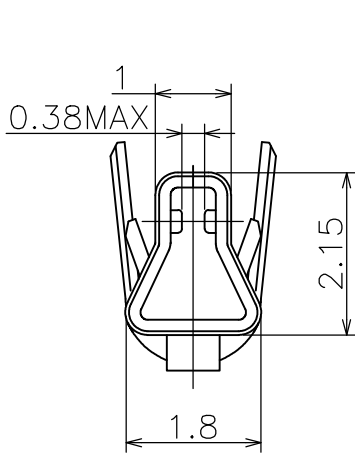
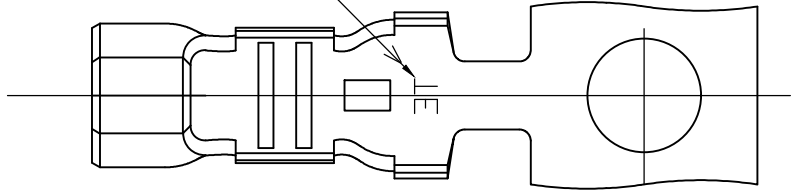


THE DATASHEET OF
1376476-1

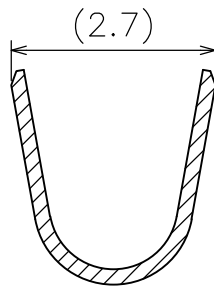


REVISIONS					
P	LTR	DESCRIPTION	DATE	DWN	APVD
	C1	REVISED PER ECR-20-100273	13AUG2020	M.M	D.Z

トレードマーク
TRADE MARK



断面 A-A
SECT A-A



断面 B-B
SECT B-B

PRE TINNED PHOSPHOR BRONZE (0.2t) 錫めっき済み磷青銅 (板厚 0.2)	0-1376476-1
MATERIAL 材料	PART No 型番

WIRE RANGE 抱合電線断面積 AWG #26~# 22(0.12~0.38mm ²)	INSULATION DIA 被覆外径 φ1.2 ~1.9
--	-------------------------------------

© 2020 TE Connectivity. All Rights Reserved.

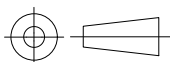
DIMENSIONS: 単位: 耗 mm	
TOLERANCES UNLESS OTHERWISE SPECIFIED: 一般公差	
0 PLC	± 0.2
1 PLC	± 0.2
2 PLC	± 0.2
3 PLC	± -
4 PLC	± -
ANGLES	± 3°

DWN	N.YAMASAKI	13AUG2020
CHK	M.SHINDO	20 SEP '02
APVD	Y.KASHIWA	20 SEP '02
PRODUCT SPEC 製品規格	108-5703	
APPLICATION SPEC 取付適用規格	114-5286	
WEIGHT		

MATERIAL 材料		SEE TABLE	FINISH 仕上げ	-
NAME 名称		2.5MM SIGNAL MATE CONN REC CONT		
SIZE	CAGE CODE	DRAWING NO 番号	RESTRICTED TO	
A4	00779	1376476	-	



TE Connectivity





CUSTOMER DRAWING

SCALE 尺度	1:1	SHEET	1 OF 1	REV	C1
-------------	-----	-------	--------	-----	----

Looking for pricing, stock, or lifecycle information?

Click below to explore more details on WIN SOURCE:

-  [View 1376476-1 on WIN SOURCE](#)
-  [TE Connectivity Information](#)

Optimize Your Supply Chain with WIN SOURCE Solutions

-  Global Sourcing Solution
-  Obsolete Management
-  Cost Control Management
-  Shortage Management
-  Alternative Solution
-  Excess Inventory Management