

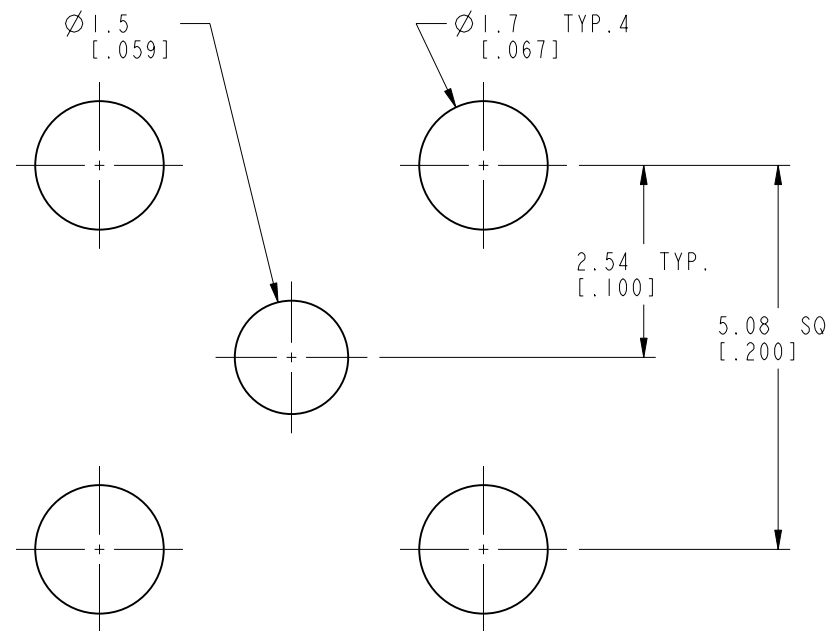
NOTES:

- MATERIALS AND FINISHES:
 BODY - BRASS, GOLD PLATING
 CONTACT - BERYLLIUM COPPER, GOLD PLATING
 INSULATOR - PTFE, NATURAL
- ELECTRICAL:
 A. IMPEDANCE: 50 OHM
 B. FREQUENCY RANGE: DC - 18 GHz
 C. DIELECTRIC WITHSTANDING VOLTAGE: 1000 VRMS, MIN.
- MECHANICAL:
 A. DURABILITY: 500 CYCLES MIN.
 B. TEMPERATURE RANGE: -65°C TO 165°C
- PACKAGING:
 A. PACKAGE CONNECTOR AS PER ROUTING INSTRUCTIONS.
 B. BAG TO BE MARKED: AMPHENOL RF
 132134
 DATE CODE

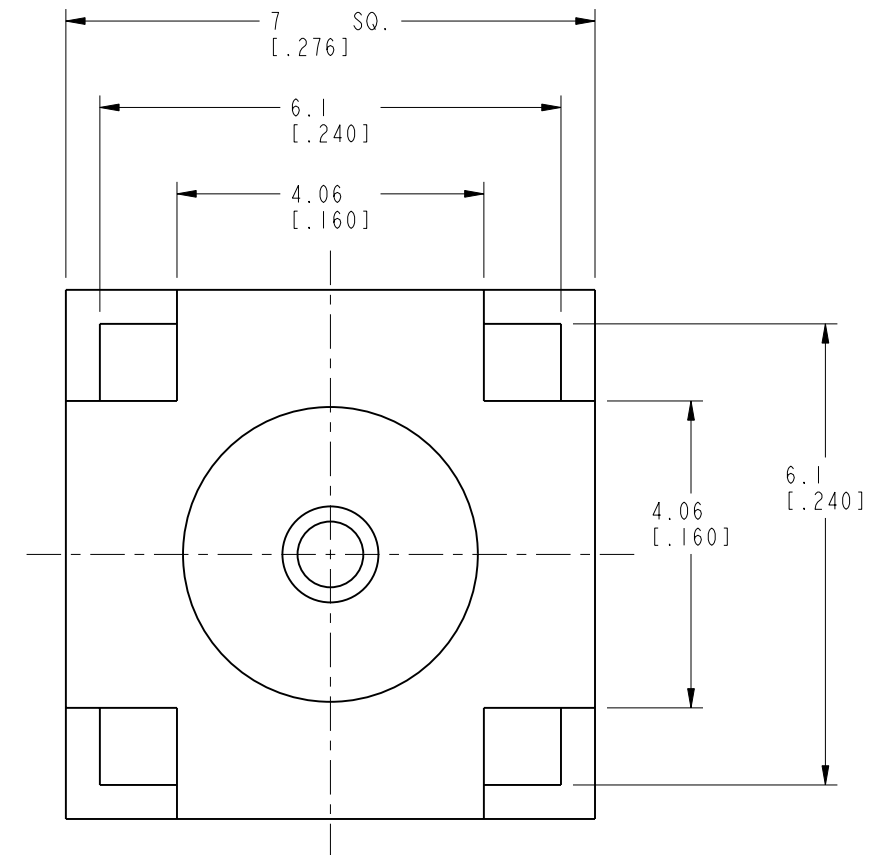
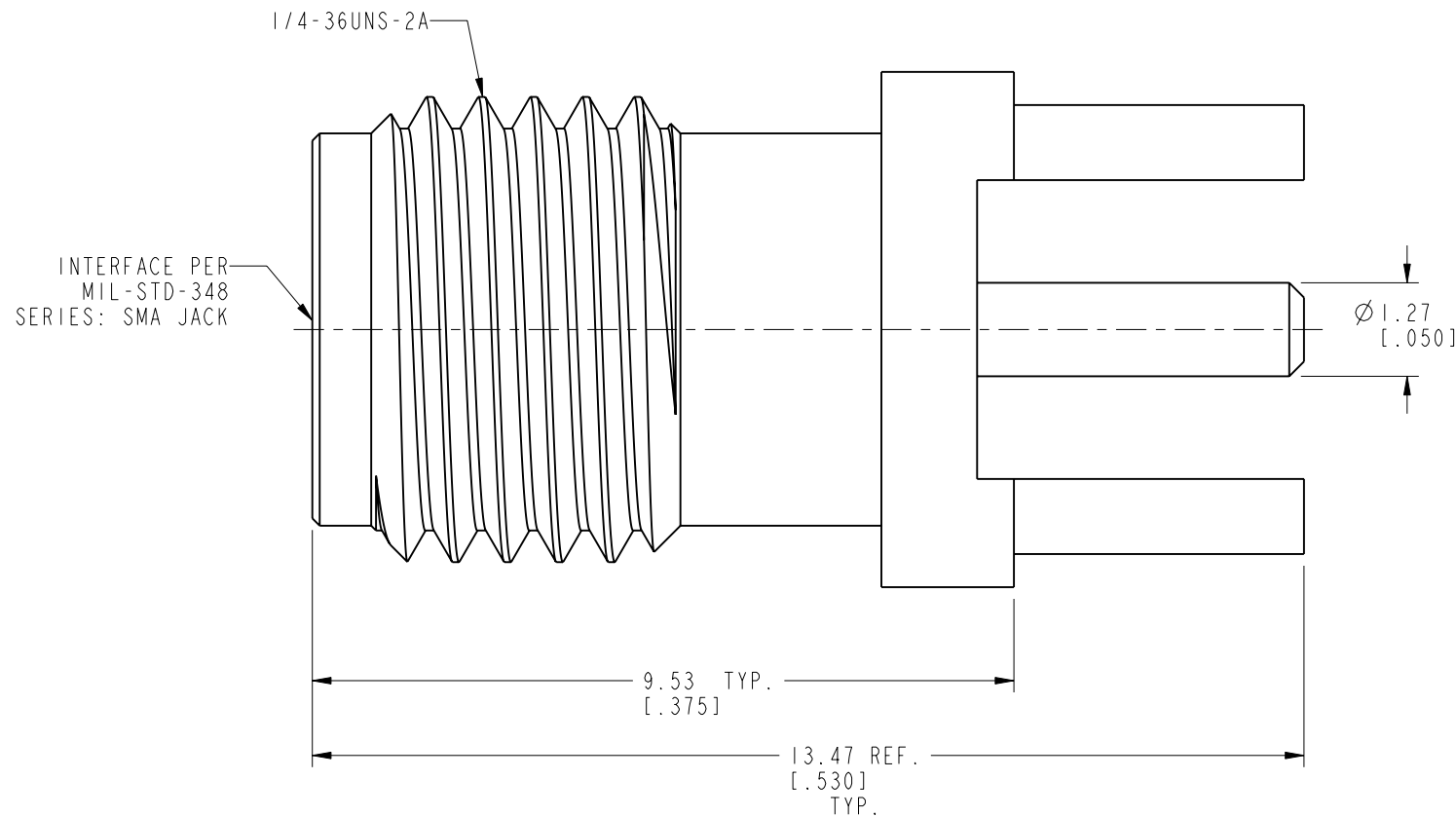
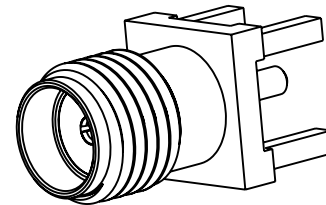
THIRD ANGLE PROJ.

REVISIONS

REV	DESCRIPTION	DATE	ECN	APPR
A	UPDATE DRAWING FORMAT	31-Mar-04	-----	SH
B	MODIFY FLANGE TO 7.0MM SQUARE	29-Nov-04	-----	SH
C	SYNCH DRAWING VRD-DMI4101701J9	10-Nov-14	50226	SH
E	SYNC, CHANGED THE DESIGN (REF 132124-15)	06-Nov-19	13504	MZ



**RECOMMENDED
PCB MOUNTING HOLES**




CUSTOMER OUTLINE DRAWING
ALL OTHER SHEETS ARE FOR INTERNAL USE ONLY

UNLESS OTHERWISE SPECIFIED, DIMENSIONS ARE IN METRIC AND TOLERANCES ARE: <0.5mm ±0.05mm 0.5 - 6mm ±0.1mm 6 - 30mm ±0.2mm 30 - 120mm ±0.3mm ANGLES ±1°	MATERIAL - SEE NOTES	DRAWN M. ZHANG	DATE 06-Nov-19	TITLE SMA P.C.B JACK	Amphenol RF www.amphenolrf.com	
	REFERENCE	ENGINEER M. ZHANG	DATE 26-Jul-19			
NOTICE - These drawings, specifications, or other data (1) are, and remain the property of Amphenol corp. (2) must be returned upon request; and (3) are confidential and not to be disclosed to any person other than those to whom they are given by Amphenol Corp. the furnishing of these drawings, specifications, or other data by Amphenol Corp., or to any other person to anyone for any purpose is not to be regarded by implication or otherwise in any manner licensing, granting rights to permitting such holder or any other person to manufacture, use or sell any product, process or design, patented or otherwise, that may in any way be related to or disclosed by said drawings, specifications, or other data.	EAR#	APPROVED S. HSIEH	DATE 06-Nov-19	SCALE: 10.0:1.0	DRAWING NO. SMA6251A1-147-3GT5GP-50	
	REF:	CAD FILE		SHEET 3 OF 3		ITEM NO. 116251AHC01FR5F
	CONFIGURATION LEVEL: In Work	FINISH			DWG SIZE B	REV E

Looking for pricing, stock, or lifecycle information?

Click below to explore more details on WIN SOURCE:

 [View 132134 on WIN SOURCE](#)

 [Amphenol Information](#)

Optimize Your Supply Chain with WIN SOURCE Solutions

-  Global Sourcing Solution
-  Obsolete Management
-  Cost Control Management
-  Shortage Management
-  Alternative Solution
-  Excess Inventory Management