



**THE DATASHEET OF**  
**1411169-3**

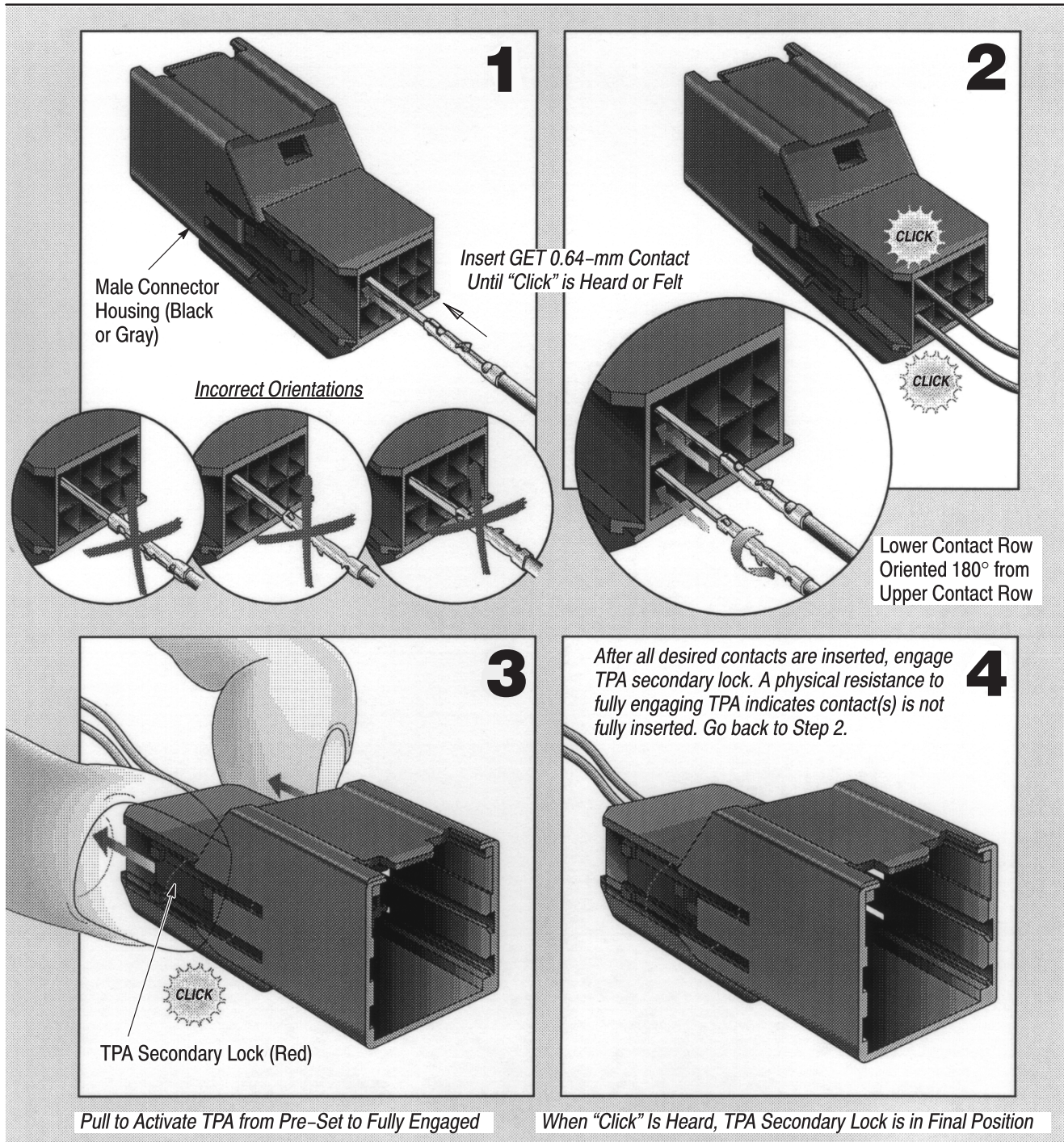


**1. MOUNTING**

**NOTE** This document is representative of all connector positions in this product family.



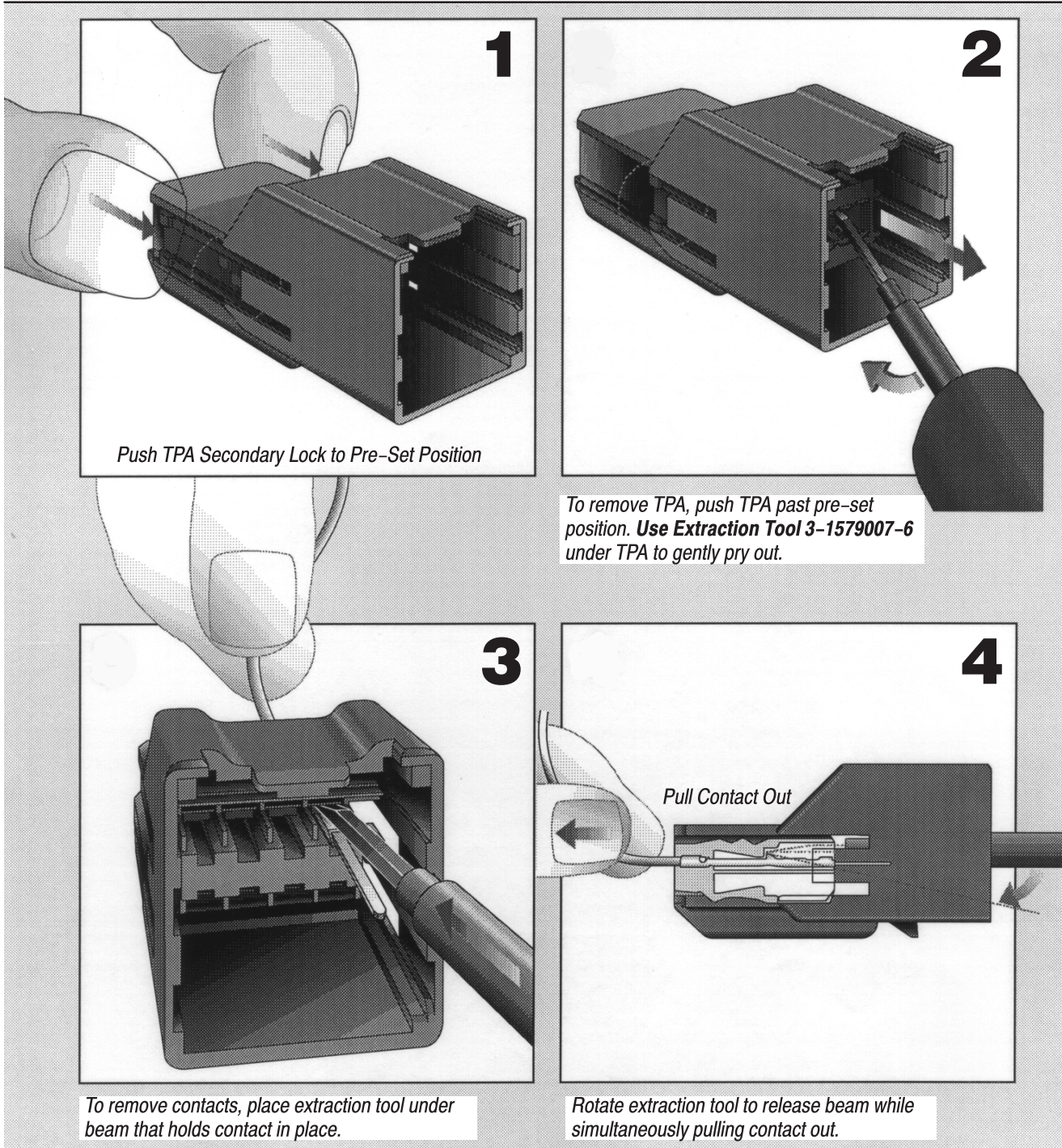
Reasons for reissue of this instruction sheet are provided in Section 3, REVISION SUMMARY.



2. DISMOUNTING

**NOTE**

DO NOT re-use damaged or worn contacts; instead, replace them with new contacts and discard the old ones.



3. REVISION SUMMARY

Revisions to this instruction sheet include:

- Updated document to corporate requirements

## Looking for pricing, stock, or lifecycle information?

Click below to explore more details on WIN SOURCE:

 [View 1411169-3 on WIN SOURCE](#)

 [TE Connectivity](#) Information

## Optimize Your Supply Chain with WIN SOURCE Solutions

-  Global Sourcing Solution
-  Obsolete Management
-  Cost Control Management
-  Shortage Management
-  Alternative Solution
-  Excess Inventory Management