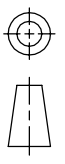




THE DATASHEET OF
1432791-1



Connectivity	CUSTOMER DATA	PART NO.	SHT. 1
THE FIRST_DRAWN	CUSTOMER	1432791-1	OF 2
5-26-05	TYCO_ELECTRONICS_STANDARD		
SCALE			
1:1			
		CHANGES	
	DO NOT SCALE THIS DRAWING	REV.	DATE
		06NOV2017	ECO-17-003787
		29DEC2022	ECN-22-181733
		CO	APP.
			B.T.
			B.K.

IN AUTOMOTIVE APPLICATIONS OR APPLICATIONS REQUIRING PPAP AND/OR IMDS DOCUMENTATION

CHARACTERISTICS: (ALL DATA APPLIES @ 23°C UNLESS OTHERWISE SPECIFIED)

12 VDC
7.8 VDC MAXIMUM
1.2 VDC MINIMUM
90 OHMS +/- 10%
8 mSEC. MAXIMUM EXCLUDING BOUNCE
5 mSEC. MAXIMUM EXCLUDING BOUNCE
OPERATING -40°C TO +85°C

(CONTACT DATA IS FORMATTED N.O./N.C.)

OBSOLETE

1 FORM C (SPDT)
AgSn0 (SILVER TIN-OXIDE)
200mv @ 35A ON N.O. CONTACTS (AFTER SWITCHING)
250mv @ 20A ON N.C. CONTACTS (AFTER SWITCHING)
90A/30A (LAMP) @ 16 VDC
40A/30A @ 16 VDC RESISTIVE
40A/30A @ 23°C , 35A/20A @ 85°C
500V RMS CONTACTS TO COIL

100,000 OPERATIONS, 40 A, 14 VDC RESISTIVE ON NORMALLY OPEN CONTACT

CHARACTERISTICS:

10 MILLION OPERATIONS, NO CONTACT LOAD
COPPER, UNPLATED

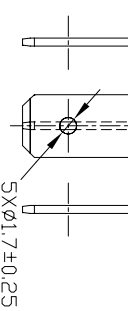
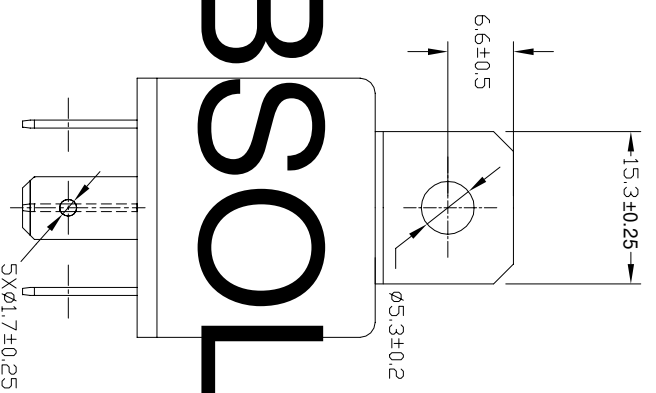
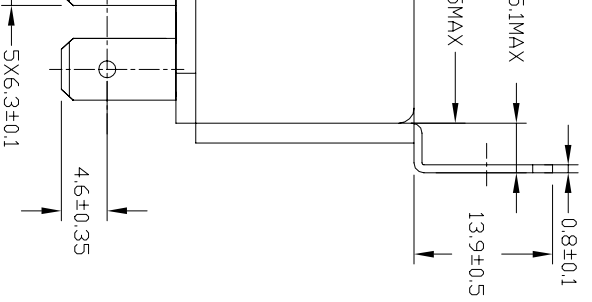
Connectivity	CUSTOMER DATA	PART NO.	SHT. 2
		1432791-1	OF 2

E FIRST_DRAWN -26-05	SCALE 1:1	CUSTOMER TYCO_ELECTRONICS_STANDARD	
-------------------------	--------------	---------------------------------------	--

+/- +/- +/- +/-		REV D1	
--------------------------	--	--------	--

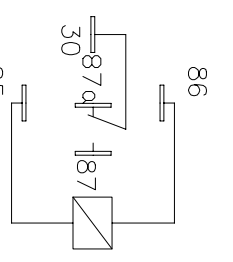
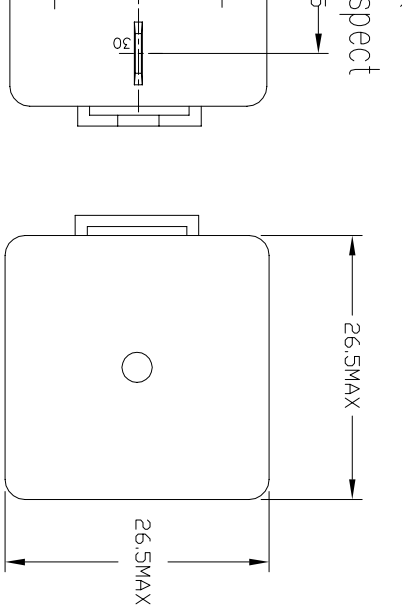
DO NOT SCALE THIS DRAWING	MILLIMETERS		
---------------------------	-------------	--	--

TYCO ELECTRONICS PART NUMBER, SCHEMATIC,
ORIGIN, AND DATE CODE



OBSOLETE

* TERMINAL LOCATIONS
APPLY AT THE BASE
OF THE TERMINALS



Schematic Drawing
(Bottom views)

NOT TO BE USED IN AUTOMOTIVE APPLICATIONS OR APPLICATIONS
REQUIRING PPAP AND/OR IMDS DOCUMENTATION

Looking for pricing, stock, or lifecycle information?

Click below to explore more details on WIN SOURCE:

 [View 1432791-1](#) on WIN SOURCE

 [TE Connectivity](#) Information

Optimize Your Supply Chain with WIN SOURCE Solutions

-  Global Sourcing Solution
-  Obsolete Management
-  Cost Control Management
-  Shortage Management
-  Alternative Solution
-  Excess Inventory Management