



**THE DATASHEET OF  
G125-MS11005M2P**



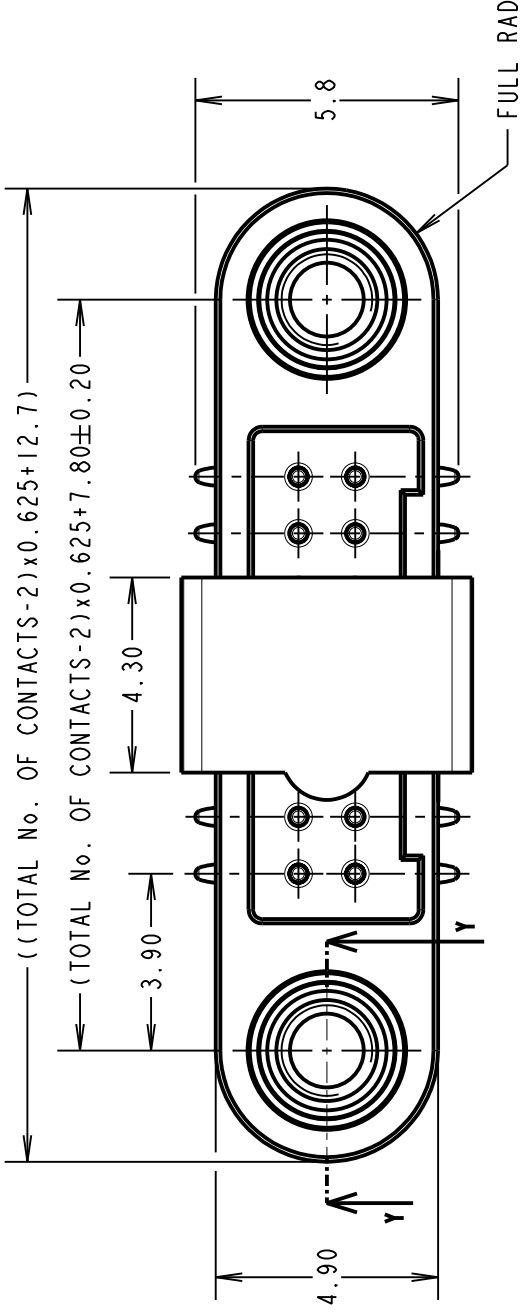
# Customer Information Sheet

DRAWING No.: G125-MS1XX05M2P

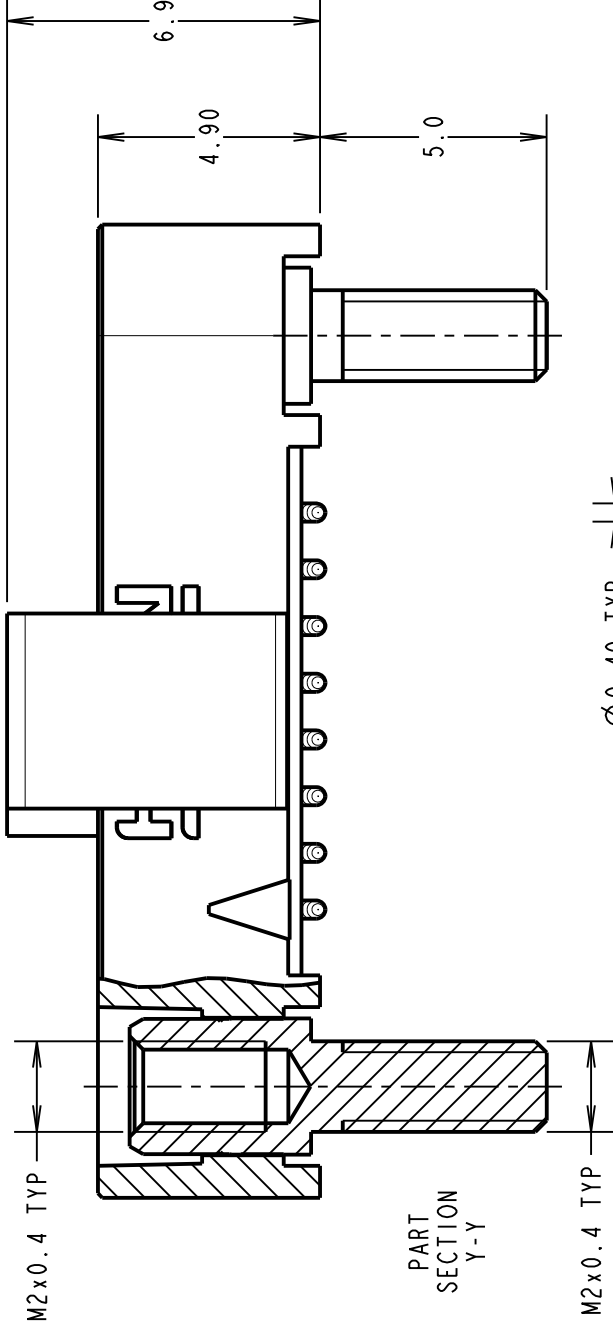
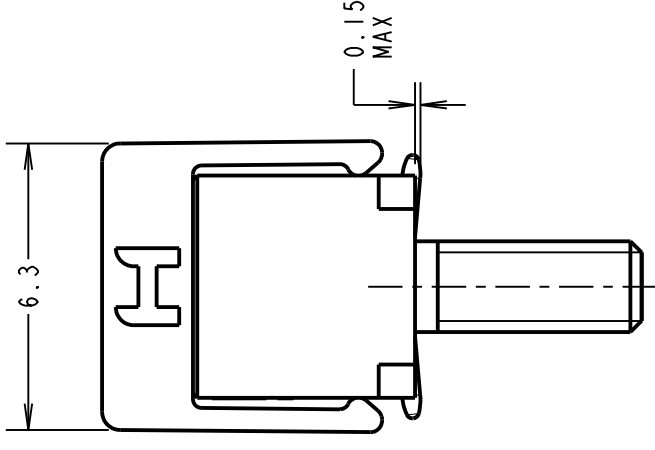
IF IN DOUBT - ASK

(C)

NOT TO SCALE

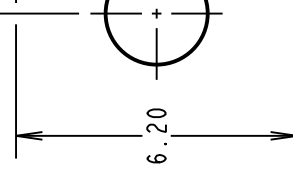
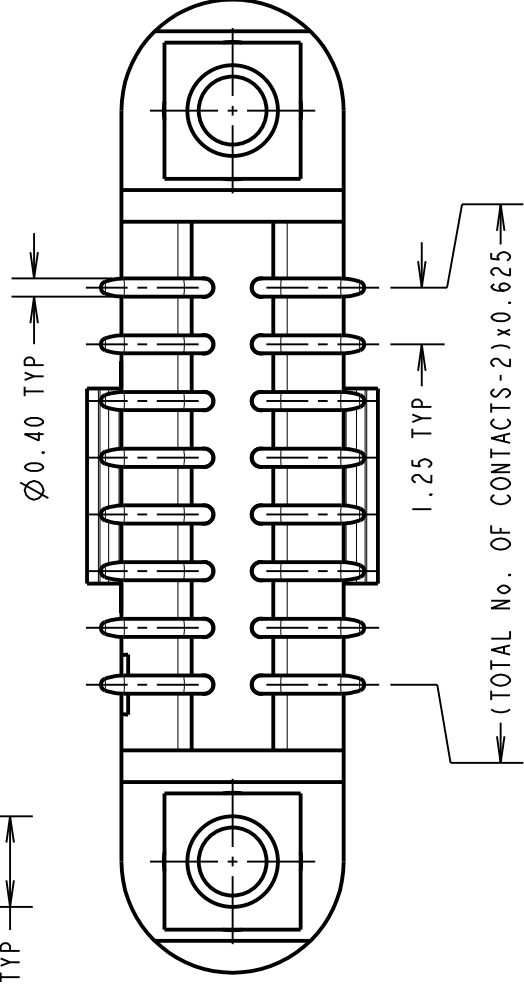


ORDER CODE: **G125-MS1XX05M2P**  
 TOTAL No. OF CONTACTS  
 06, 10, 12, 16, 20, 26, 34 & 50.



PART SECTION Y-Y

M2x0.4 TYP

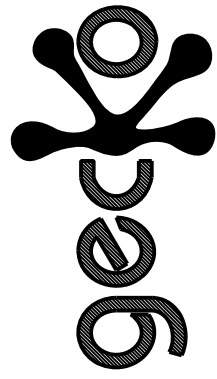


(TOTAL No. OF CONTACTS

CONNECTOR AND PCB LAYOUT D  
 SEE SHEET 5 FOR TAPE STRI

NOTES:

1. FOR MATERIALS, FINISH AND SPECIFICATIONS SEE GECKO SERIES OR COMPONENT SPECIFICATION C125XX (LATEST ISSUE) FOR FULL
2. CO-PLANARITY OF SMT TAILS = 0.10mm MAX.
3. DRAWING SHOWS CONNECTOR WITH 16 CONTACTS.
4. FOR BOARD MOUNT NUTS, ORDER SEPARATELY. PART NUMBER: G125-450000B HEXAGONAL THIN NUT - BAG OF 12 OR G125-4510000B ROUND SLOTTED NUT - BAG OF 12.



PATENTED TECHNOLOGY.

**HARWIN**

www.harwin.com  
 technical@harwin.com

TOLERANCES	MATERIALS
X. = ±1mm	
X.X = ±0.50mm	
X.XX = ±0.20mm	
X.XXX = ±0.01mm	
ANGLES = ±5°	
UNLESS STATED	

THIS DRAWING AND ANY INFORMATION OR DESCRIPTIVE MATTER SET OUT HEREON ARE CONFIDENTIAL AND COPYRIGHT PROPERTY OF THE HARWIN GROUP AND MUST NOT BE DISCLOSED, LOANED, COPIED OR USED FOR MANUFACTURING, TENDERING OR FOR ANY OTHER PURPOSE WITHOUT THEIR WRITTEN PERMISSION.

FINI

S/ARI

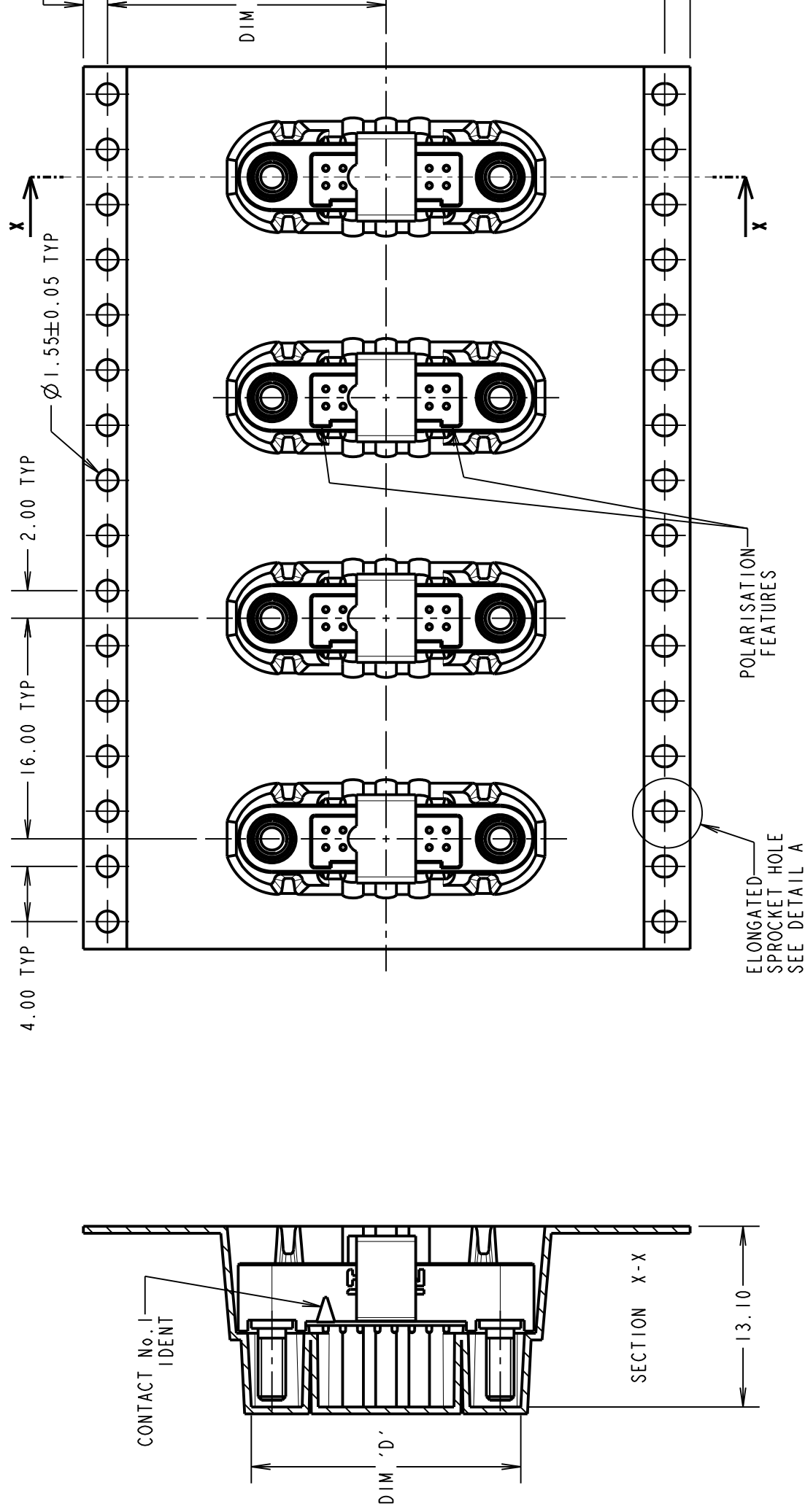
# Customer Information Sheet

DRAWING No.: G125-MS1XX05M2P

IF IN DOUBT - ASK

(C)

NOT TO SCALE



ORDER CODE: **G125-MS1XX05M2P**

TOTAL No. OF CONTACTS  
06, 10, 12, 16, 20, 26, 34 & 50.

- NOTES:
1. COMPONENTS ARE ORIENTED IN TAPE POCKETS AS SHOWN.
  2. COMPONENTS ARE SUPPLIED IN STRIPS OF 10.
  3. LARGE QUANTITIES MAY BE SHIPPED ON A REEL AND MAY NOT HAVE A LEADER.
  4. FOR PARTS ON REEL SUITABLE FOR AUTOMATIC MACHINE PLACEMENT PLEASE ORDER: G125-MS1XX05M2R.
  5. COMPONENTS ARE ORIENTATED IN TAPE POCKETS SO THAT THE POLARISING FEATURES ARE FACING AWAY FROM THE FREE END.

PART No.	DIM 'A'	DIM 'B'
G125-MS10605M2P	32.0±0.3	28.40
G125-MS11005M2P		
G125-MS11205M2P		
G125-MS11605M2P	44.0±0.3	40.40
G125-MS12005M2P		
G125-MS12605M2P		
G125-MS13405M2P	56.0±0.3	52.40
G125-MS15005M2P		

**HARWIN**  
www.harwin.com  
technical@harwin.com

THIS DRAWING AND ANY INFORMATION OR DESCRIPTIVE MATTER SET OUT HEREON ARE CONFIDENTIAL AND COPYRIGHT PROPERTY OF THE HARWIN GROUP AND MUST NOT BE DISCLOSED, LOANED, COPIED OR USED FOR MANUFACTURING, TENDERING OR FOR ANY OTHER PURPOSE WITHOUT THEIR WRITTEN PERMISSION.

TOLERANCES  
X. = ± 1mm  
X.X = ± 0.50mm  
X.XX = ± 0.20mm  
X.XXX = ± 0.1mm  
ANGLES = ± 5°  
UNLESS STATED

MATERIAL  
FINISH  
START

## Looking for pricing, stock, or lifecycle information?

Click below to explore more details on WIN SOURCE:

[View G125-MS11005M2P on WIN SOURCE](#)

[Harwin Inc. Information](#)

## Optimize Your Supply Chain with WIN SOURCE Solutions

- ✓ Global Sourcing Solution
- ✓ Obsolete Management
- ✓ Cost Control Management
- ✓ Shortage Management
- ✓ Alternative Solution
- ✓ Excess Inventory Management