



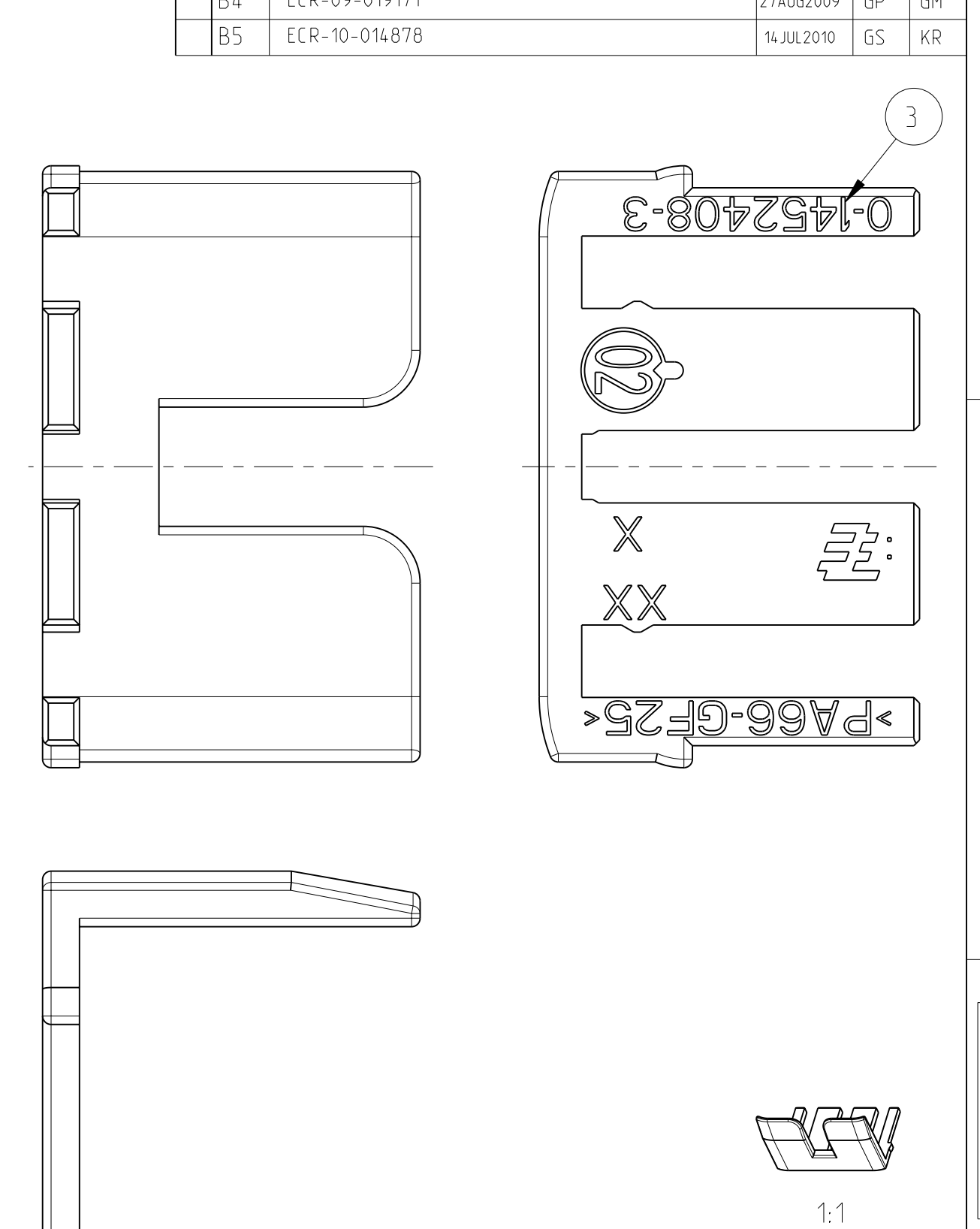
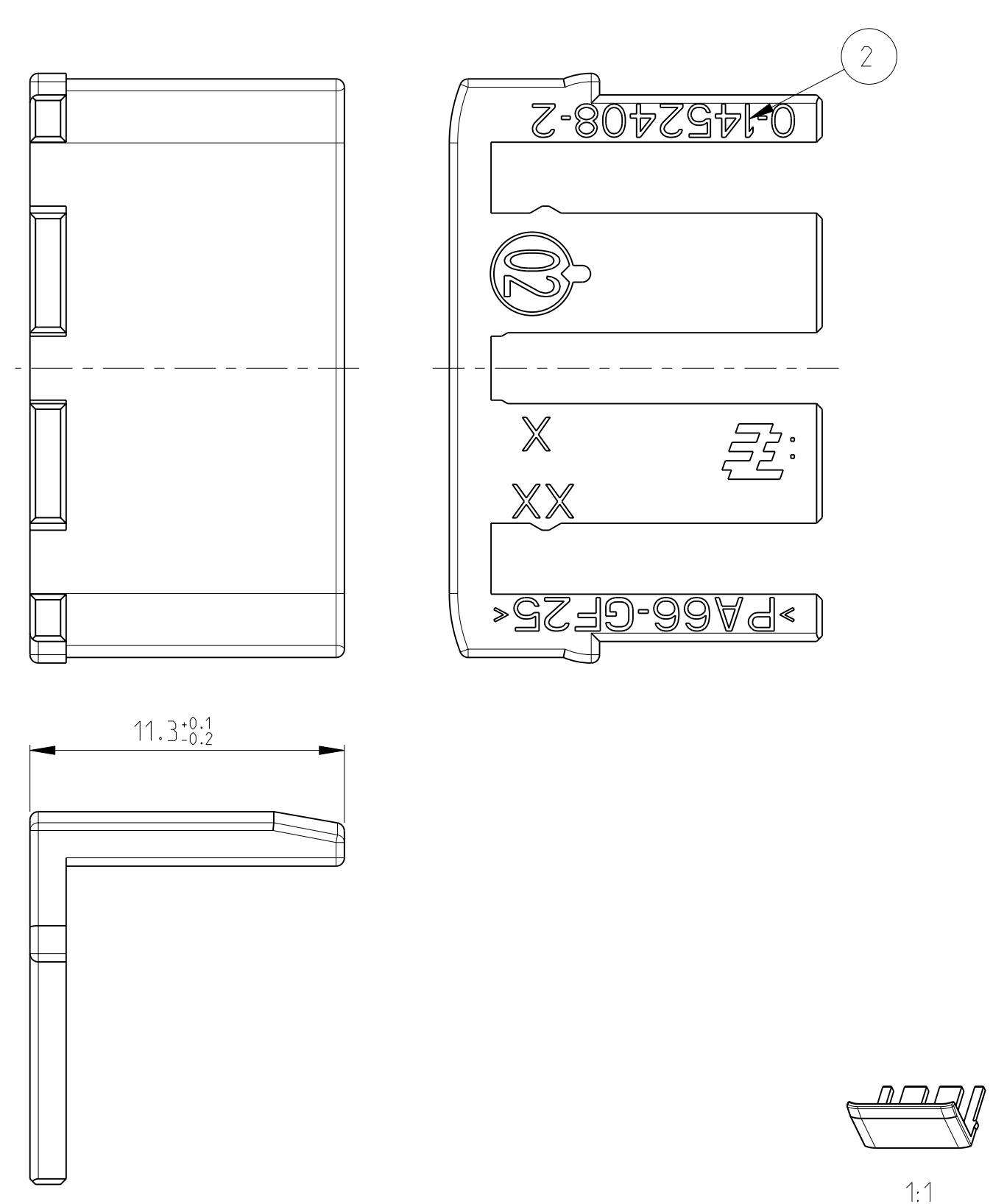
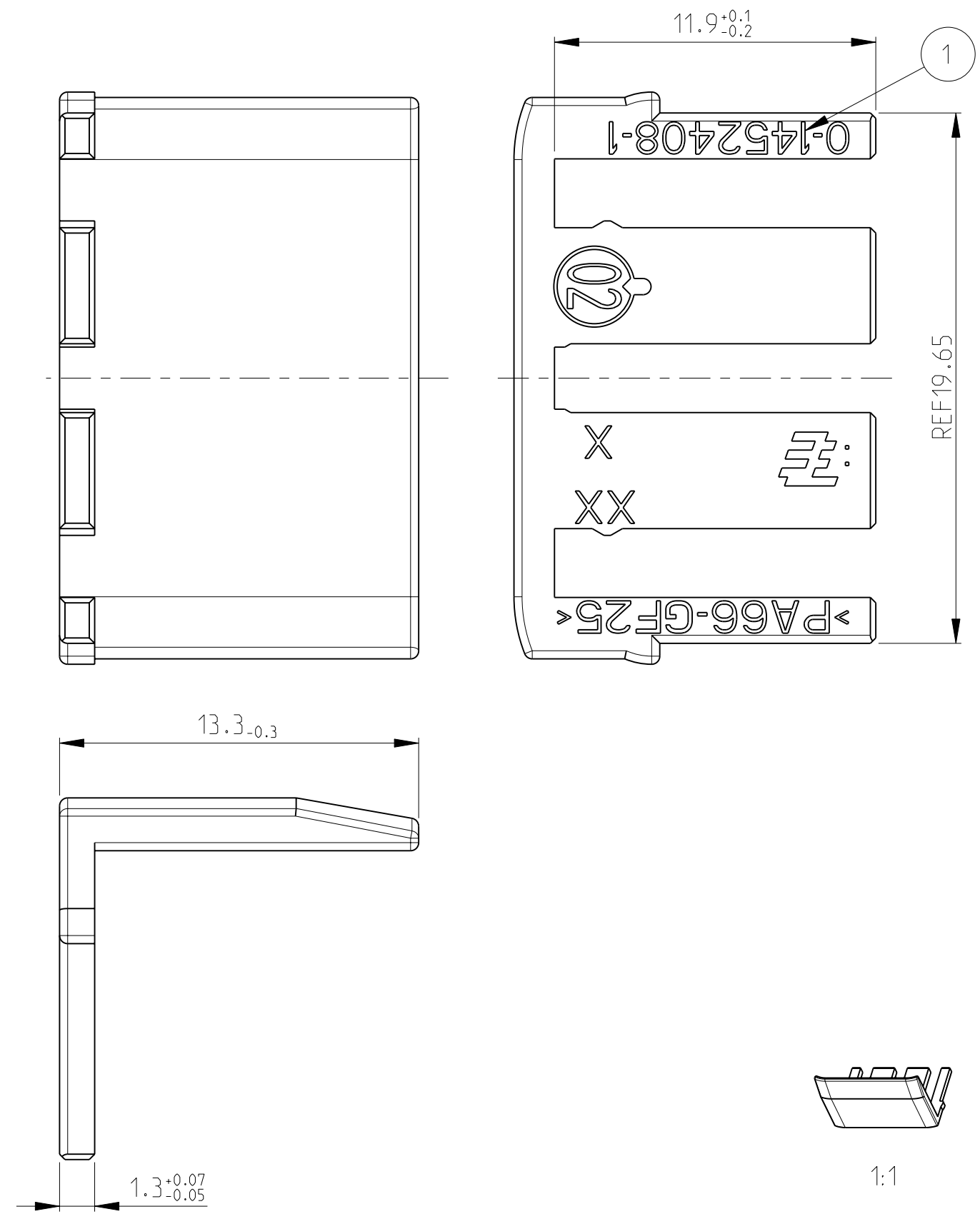
THE DATASHEET OF
1452408-1



VERSION/Variante 0-1452408-1

VERSION/Variante 0-1452408-2

LOC	DIST	P	LTR	REVISIONS ÄNDERUNGEN DESCRIPTION BESCHREIBUNG	DATE	DWN	APVD
A1	-						
		B2		ECR-08-001890	22JAN2008	HKE	ASC
		B3		ECR-09-008099	09APR2009	HKE	ASC
		B4		ECR-09-019171	27AUG2009	GP	GM
		B5		ECR-10-014878	14JUL2010	GS	KR



MISSING DIMENSIONS SEE VERSION 0-1
 Fehlende Masse siehe Variante 0-1

MISSING DIMENSIONS SEE VERSION 0-1
 Fehlende Masse siehe Variante 0-1

FOR VERSION 0-1452408-1 ONLY / Nur fuer Variante 0-1452408-1

NOTE Bem.	FEATURE Merkmal	Tyco Electronics - No.
4	APPLICATION SPECIFICATION Verarbeitungsspezifikation	114-18534-1
5	USEABLE RECEPTACLE HOUSINGS Passende Buchsengehäuse	1452400 1452415

FOR VERSION 0-1452408-2 ONLY / Nur fuer Variante 0-1452408-2

NOTE Bem.	FEATURE Merkmal	Tyco Electronics - No.
2	APPLICATION SPECIFICATION Verarbeitungsspezifikation	114-18966
3	USEABLE RECEPTACLE HOUSING Passendes Buchsengehäuse	1563172

FOR VERSION 0-1452408-3 ONLY / Nur fuer Variante 0-1452408-3

NOTE Bem.	FEATURE Merkmal	Tyco Electronics - No.
2	APPLICATION SPECIFICATION Verarbeitungsspezifikation	-
3	USEABLE RECEPTACLE HOUSING Passendes Buchsengehäuse	2112134 2112135

TE ORDER NO.	MATERIAL	DESCRIPTION	WEIGHT (G)	COLOUR	ITEM NO
0-1452408-3	PA66-GF25	58 POS. CON. 2-NDARY LOCK	0.75	RED	3
0-1452408-2	PA66-GF25	58 POS. CON. 2-NDARY LOCK	0.70	RED	2
0-1452408-1	PA66-GF25	58 POS. CON. 2-NDARY LOCK	0.82	RED	1

THIS DRAWING IS A CONTROLLED DOCUMENT FOR TYCO ELECTRONICS CORPORATION
 DIESES ZEICHNUNGSDOKUMENT WIRD DURCH AMP INCORPORATED KONTROLLIERT.
 DEN JEWELIS LETZTGÜLTIGEN ÄNDERUNGSSTAND ERFAHREN SIE AUF ANFRAGE.

DIMENSIONS: MASSE IN EINHEITEN: (MM)

TOLERANCES UNLESS OTHERWISE SPECIFIED: ALLGEMEINTOLERANZEN

DWN	K.ROTH	11MAR2002
CHK	S.DENTER	12MAR2002
APVD	G.MUMPER	12MAR2002

PRODUCT SPEC: -
 APPLICATION SPEC: -
 VERARBEITUNGSSPEZ.: -

WEIGHT: -
 GEWICHT: -

CUSTOMER DRAWING / KUNDENZEICHNUNG

SCALE: MASSSTAB 5:1
 SHEET: BLATT 1 OF 1
 REV: B5

NAME: 58 POS. CONNECTOR SECONDARY LOCK FOR 154 POS CONNECTOR

SIZE: A2
 CAGE CODE: 00779
 DRAWING NO: 1452408

Tyco Electronics AMP GmbH
 64625 Bensheim (Germany)

NOTES:
 Bemerkungen:
 1 DELIVERY CONDITION: LOOSE PIECES
 Anlieferungszustand: Teile lose beige stellt

Looking for pricing, stock, or lifecycle information?

Click below to explore more details on WIN SOURCE:

 [View 1452408-1](#) on WIN SOURCE

 [TE Connectivity](#) Information

Optimize Your Supply Chain with WIN SOURCE Solutions

-  Global Sourcing Solution
-  Obsolete Management
-  Cost Control Management
-  Shortage Management
-  Alternative Solution
-  Excess Inventory Management