

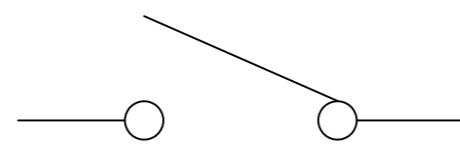
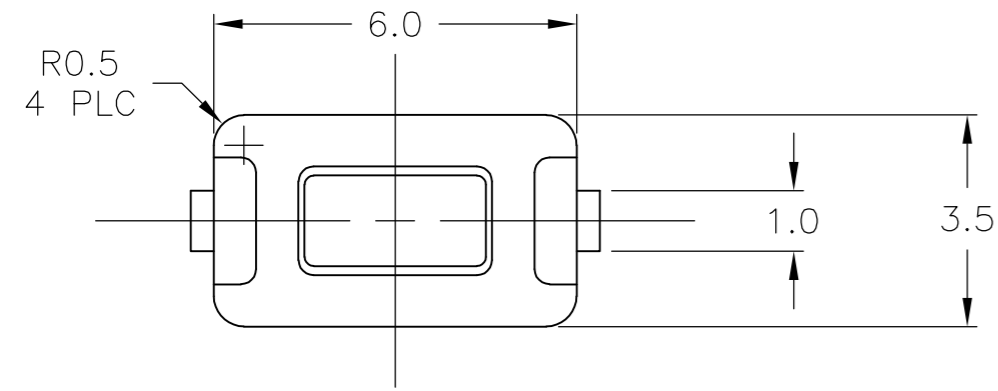


# THE DATASHEET OF FSM2JMTR



THIS DRAWING IS UNPUBLISHED. RELEASED FOR PUBLICATION  
 © COPYRIGHT - By - ALL RIGHTS RESERVED.

LOC		DIST		REVISIONS			
P	LTR	DESCRIPTION		DATE	DWN	APVD	
	K3	REVISED PER ECO-11-024681		15MAR12	KH	PO	



CIRCUIT DIAGRAM

MATERIALS:

CASE: PPS, 30% GLASS, UL94V-0, COLOR-BROWN  
 COVER: STAINLESS STEEL  
 ACTUATOR: PPS COLOR: BLACK  
 MOVING CONTACT: STAINLESS STEEL, SILVER PLATE  
 FIXED CONTACT/TERMINAL: COPPER ALLOY, SILVER OR TIN OVER NICKEL

ELECTRICAL:

MAX CONTACT RATING: 50MILLIAMPS@24V DC  
 MIN CONTACT RATING: 10MICROAMPS@1V DC  
 INITIAL CONTACT RESISTANCE: 100 MILLIOHMS MAX  
 INSULATION RESISTANCE: 100 MEGAOHMS @ 100 VDC MIN  
 DIELECTRIC STRENGTH: 500 VDC 50/60 HZ FOR 1 MINUTE  
 LIFE EXPECTANCY: UP TO 40,000 CYCLES

MECHANICAL:

ACTUATION FORCE: 180±50gf  
 ACTUATION TRAVEL: 0.25 +0.2/-0.1

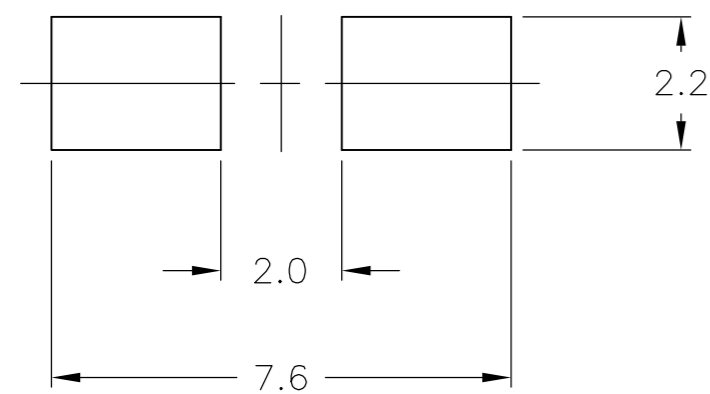
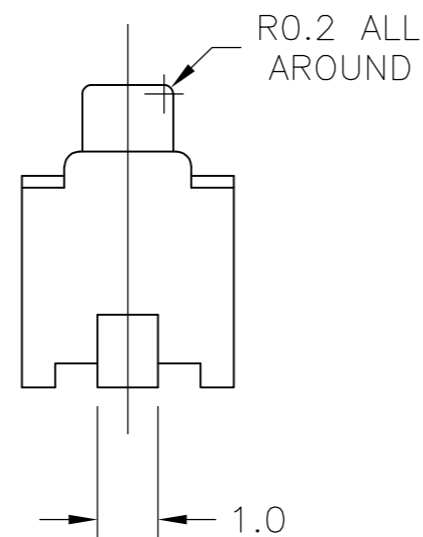
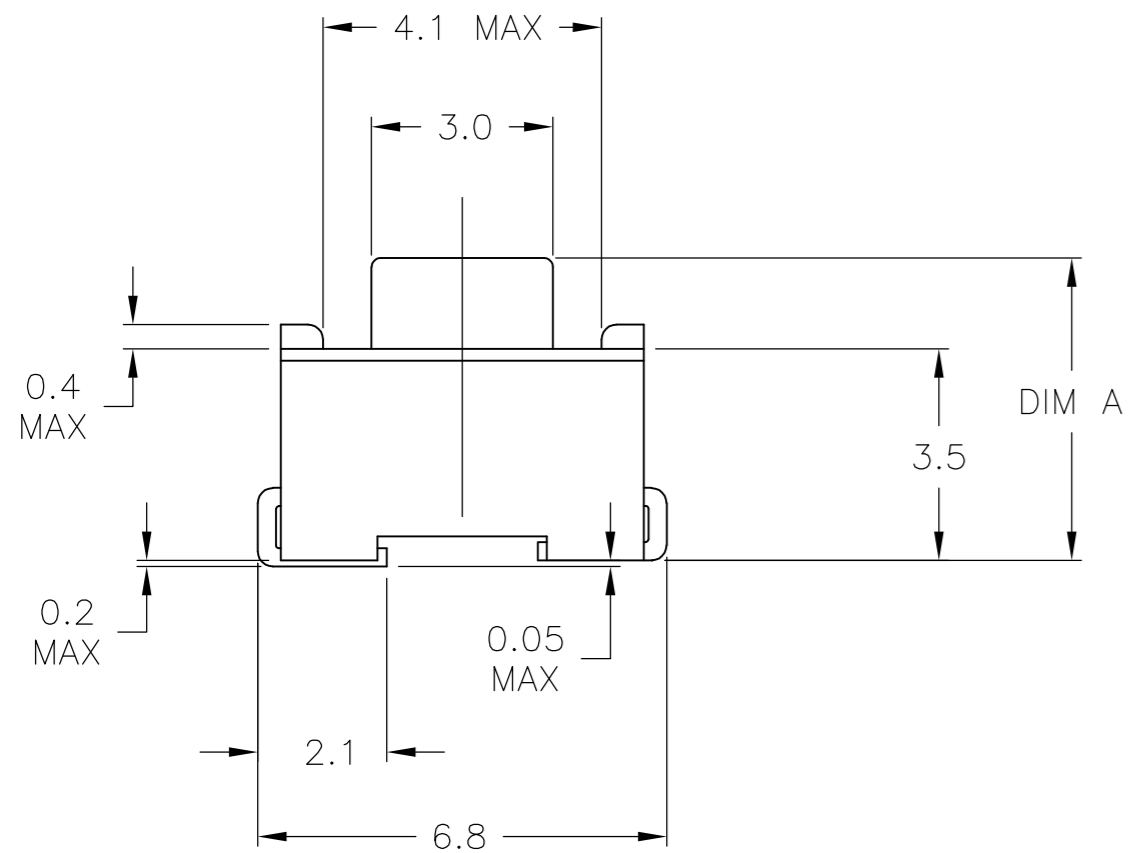
ENVIRONMENTAL:

OPERATING TEMPERATURE: -35°C TO +85°C  
 STORAGE TEMPERATURE: -35°C TO +85°C  
 SOLDERABILITY: PER EIA-364-52, CLASS 1, CATEGORY 2  
 SOLDER HEAT RESISTANCE: PER 109-201, CONDITION B

PACKAGING:

TAPE AND REEL PACKAGING PER EIA 481, 2000 PER REEL  
 TAPE WIDTH 16mm PITCH 8mm

- 1 PRELIMINARY PART - NOT RELEASED FOR PRODUCTION.
- 2. ALL MATERIALS AND FINISHES SHALL COMPLY WITH EU DIRECTIVE 2002/95/EC OF 27JAN2003 (ROHS)
- 3 OBSOLETE PARTS: OBSOLETE CIS STREAMLINING PER D.RENAUD/D.SINISI



SOLDER LAND DIMENSION

3	OBSOLETE	Tin	4.3	FSM1JMSN TR	147873-5
3	OBSOLETE	Tin	5.0	FSM2JMSN TR	147873-4
		Silver	4.3	FSM1JMTR	147873-2
		Silver	5.0	FSM2JMTR	147873-1
		Finish	DIM A	Alcoswitch P/N	Part Number

THIS DRAWING IS A CONTROLLED DOCUMENT.		DWN	R BROWN	03OCT01	<b>STE</b> TE Connectivity
DIMENSIONS: mm		CHK	H WYNKOOP	03OCT2001	
TOLERANCES UNLESS OTHERWISE SPECIFIED:		APVD	H WYNKOOP	03OCT2001	NAME SWITCH, TACTILE, SMT
0 PLC ± -		PRODUCT SPEC	-		
1 PLC ± 0.3		APPLICATION SPEC	-		
2 PLC ± -		WEIGHT	-		
3 PLC ± -		SIZE	A2	00779	DRAWING NO 147873
4 PLC ± -		FINISH	-		RESTRICTED TO -
ANGLES ± 0°-30°		CUSTOMER DRAWING	SCALE 8:1		SHEET 1 of 1
SEE NOTES		SCALE 8:1		REV K3	

## Looking for pricing, stock, or lifecycle information?

Click below to explore more details on WIN SOURCE:

 [View FSM2JMTR](#) on WIN SOURCE

 [TE Connectivity](#) Information

## Optimize Your Supply Chain with WIN SOURCE Solutions

-  Global Sourcing Solution
-  Obsolete Management
-  Cost Control Management
-  Shortage Management
-  Alternative Solution
-  Excess Inventory Management