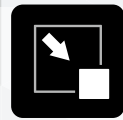


# MMCX Series

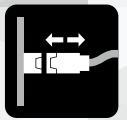
## Ultra-small Push-on Coaxial Connector



MMCX



Compact



Push On



Aug. 1.2024 Copyright 2024 HIROSE ELECTRIC CO., LTD. All Rights Reserved.



## Features

---

### 1. Push-on System for Easy Attachment and Removal

### 2. Applicable Cable

RG Type High Frequency Coaxial Cable

- RG-178B/U ( $\phi$  1.8)
- RG-316/U ( $\phi$  2.59 Max.)

Extra-fine Fluororesin Cable

- Single Shielded Cable ( $\phi$  1.13,  $\phi$  1.37,  $\phi$  1.48)
- Double Shielded Cable ( $\phi$  1.32)

Semi-flexible Cable

- External conductor diameter equivalent to 0.085 inches  
(With jacket finishing diameter is  $\phi$  2.5)
- External conductor diameter equivalent to 0.047 inches  
(With jacket finishing diameter is  $\phi$  1.44)

### 3. Double-ended Cable Assembly with Other Hirose Series

Double-ended cable assembly available with H.FL, U.FL, SMA, and SMA(R).

### 4. High Frequency Characteristics

Guaranteed frequency : DC to 8GHz  
(The guaranteed frequency of some parts is DC to 6GHz.)

### 5. Two Types of Plugs Available

In addition to the standard plug, a mating compatible outer conductor contact reinforced type is also available.

### 6. RoHS2 Compliant

## Application Examples

Wireless LAN, GPS, POS, Measurement Instrument, Wiring Inside Transmission Equipment

## Product Specifications

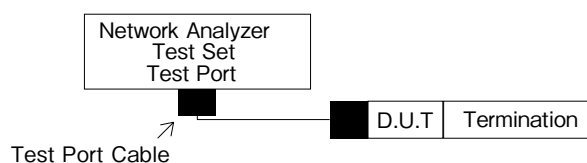
Characteristic Impedance	50 $\Omega$	Operating Temperature	-55 to +85°C
Rated Frequency	DC to 8GHz	Operating Humidity Range	90% Max.

Item	Specification	Condition
Insulation Resistance	500 M $\Omega$ Min.	Measured with 500V DC
Withstanding Voltage	No insulation breakdown	500V AC for 1 min.
Contact Resistance	Center : 10m $\Omega$ Max. Outer : 5m $\Omega$ Max.	Measured at a maximum of 100mA (DC or 1000Hz)
Total Insertion / Extraction Force (Plug)	Insertion Force : 15N Max., Extraction Force : 6 to 15N	Standard Type
	Extraction Force : 6N Min.	Outer Conductor Contact Reinforced Type [MMCX(AR)]
V.S.W.R.* (Note)	1.2 Max.	DC to 6GHz
	1.4 Max.	6 to 8GHz
Vibration Resistance	No electrical discontinuity for 1 $\mu$ s or more. No damaged, cracks or loose parts.	Frequency of 10 to 500Hz, single amplitude of 0.75mm, acceleration of 98m/s <sup>2</sup> for 12 cycles in each of the 3 axes direction.
Thermal Shock	No electrical discontinuity for 1 $\mu$ s or more. No damaged, cracks or loose parts.	Acceleration of 735m/s <sup>2</sup> , for a duration of 6ms, sine half-wave waveform, 3 cycles in each of the 3 axes direction.
Humidity Resistance	No damaged, cracked or loose parts Insulation Resistance : 10M $\Omega$ Min. (High Humidity) Insulation Resistance : 500M $\Omega$ Min. (Dry)	96 hours at temperature of 40°C and humidity of 95%.
Temperature Cycle	No damaged, cracked or loose parts.	Temperature : -55°C → +20 to +35°C → +85°C → +20 to +35°C Time : 30 min. → 5 min. → 30 min. → 5 min. 5 cycles
Mating Durability	Contact Resistance Center : 20m $\Omega$ Max. Outer : 10m $\Omega$ Max.	Mating/unmating : 500 mating cycles : Standard Type Mating/unmating : 100 mating cycles : Outer Conductor Contact Reinforced Type [MMCX(AR)]
Salt Spray	Satisfies the V.S.M.R.	5% salt water solution for 48 consecutive hours

Note : Refer to section on V.S.W.R. for details.

\* V.S.W.R. Measurement System

The above V.S.W.R. standard values were measured using the measurement system shown below.



Note 1 : The cable connector is measured attached to a double-ended cable assembly with an applicable 15cm cable.

Note 2 : The board connector is measured while mounted to a 50  $\Omega$  board and attached to a dedicated adapter.

● **V.S.W.R.**

V.S.W.R is 1.2 Max. (DC to 6GHz) or 1.4 Max. (6 to 8GHz) excluding the products listed below.

Item	Part No.	V.S.W.R.
Receptacle	MMCX-R-SMT-8	1.2 Max. (DC to 8GHz)
	MMCX-LR-SMT(40)	1.2 Max. (DC to 4GHz) 1.3 Max. (4 to 6GHz) 1.4 Max. (6 to 8GHz)
	MMCX-R-PC(40)	1.2 Max. (DC to 6GHz)
	MMCX-LR-PC-1(40)	1.3 Max. (DC to 3GHz) 1.5 Max. (3 to 6GHz)
Plug / Jack	MMCX(AR)-P-SF047	1.3 Max. (DC to 3GHz) 1.4 Max. (3 to 8GHz)
	MMCX(AR)-P-SF085	
	MMCX(AR)-LP-SF047	
	MMCX-PJ-SF085	
	MMCX(AR)-LP-SF085	1.3 Max. (DC to 3GHz) 1.4 Max. (3 to 4GHz) 1.5 Max. (4 to 5GHz) 1.6 Max. (5 to 6GHz)

## Materials / Finish

Component	Material	Finish
Shell	Brass Stainless steel (Conversion Adapter)	Gold Plating
Male Center Contact	Phosphor Bronze	Gold Plating
Female Center Contact	Beryllium Copper	Gold Plating
In-line Contact (Male/Female)	Beryllium Copper (Conversion Adapter)	Gold Plating
Insulator	PTFE Resin	—
Securing Ring	Beryllium Copper (Plug)	Gold Plating
Crimp Sleeve	Bronze	Gold Plating
Cap	Brass (Plug)	Gold Plating

## Product Number Structure

Refer to the chart below when determining the product specifications from the product number.  
Please select from the product numbers listed in this catalog when placing orders.

### ■ Standard Type

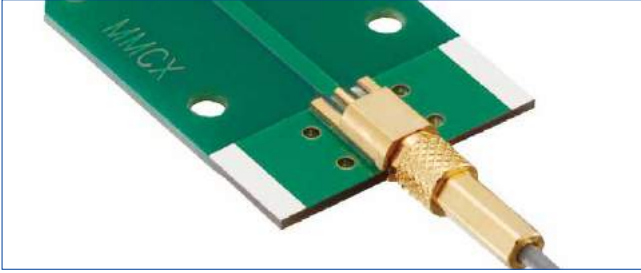
## MMCX - LP - 066 (40)

- ①      ②      ③      ④

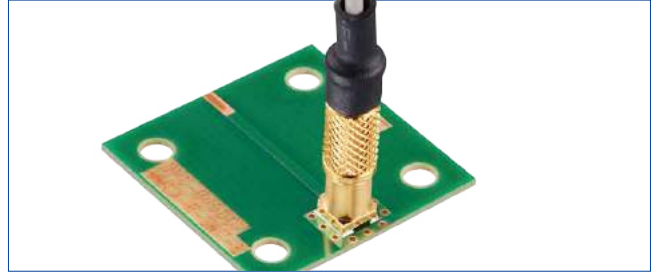
<p>① Series Name</p>	<p>MMCX</p>	<p>③ Applicable Cable /PCB Mounting Style</p>	<p>178B/U : RG-178B/U ( φ 1.8)                      316/U : RG-316/U ( φ 2.59 Max.)                      FHSB : φ 1.48 (Single Shielded Cable)                      Coaxial Fluororesin Cable                      088 : φ 1.37 (Single Shielded Cable)                      Coaxial Fluororesin Cable                      066 : φ 1.32 (Double Shielded Cable)                      Coaxial Fluororesin Cable                      : φ 1.13 (Single Shielded Cable)                      Coaxial Fluororesin Cable                      SF085 :External Conductor Diameter                      Equivalent to 0.085 Inches                      (With Jacket Finishing Diameter                      is φ 2.5)                      PC : PCB Through Hole Type                      SMT : PCB SMT Mounting Type</p>
<p>② Connector Type</p>	<p>P : Straight Plug                      LP : Right Angle Plug                      PJ, BPJ : Pannel Jack                      J : Straight Jack                      LR : Right Angle Receptacle                      R : Receptacle</p>	<p>④ Specifications</p>	<p>RoHS2 Compliant</p>

## Examples of Mated Condition

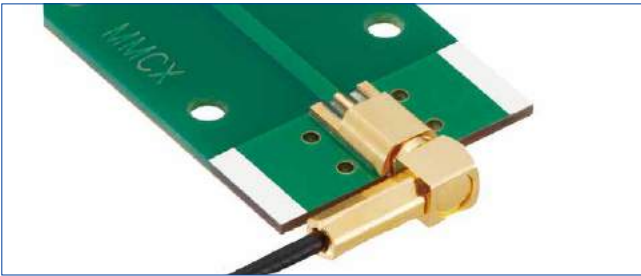
Right Angle Receptacle + Straight Plug



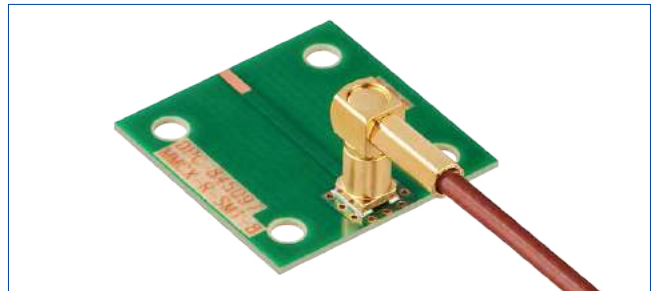
Straight Receptacle + Straight Plug



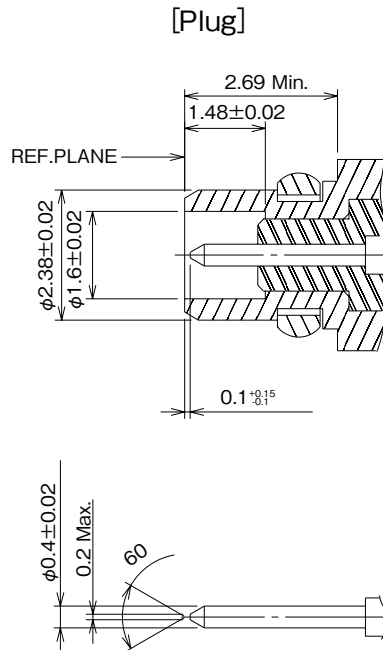
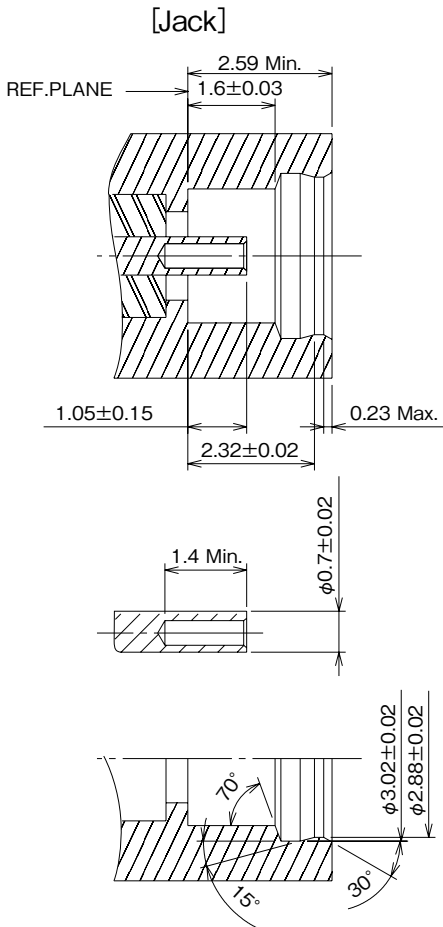
Right Angle Receptacle + Right Angle Plug



Straight Receptacle + Right Angle Plug

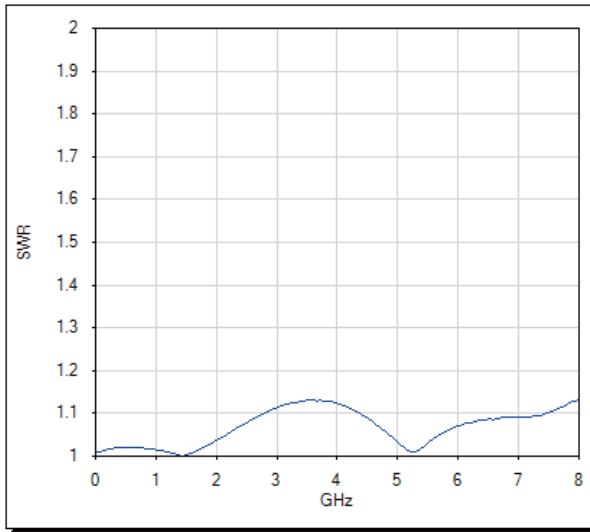


## Interface Dimensions

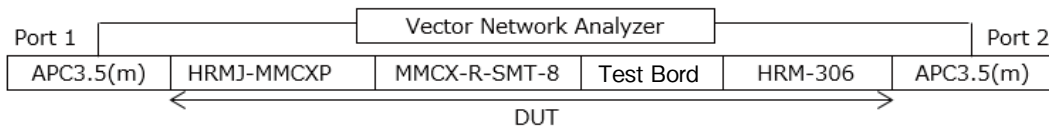
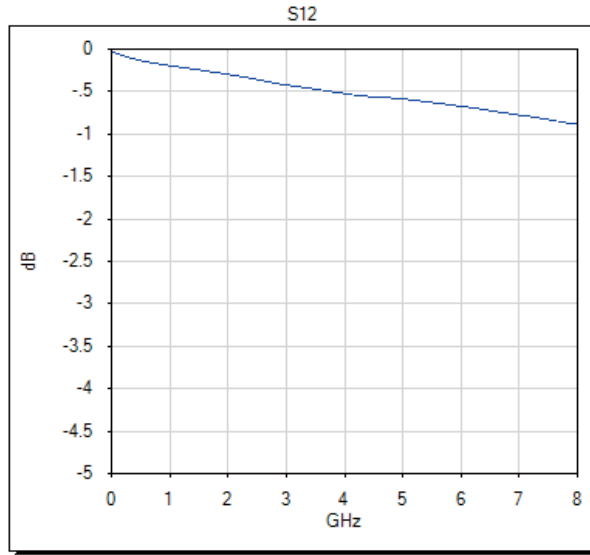


## [Reference] MMCX-R-SMT-8 High Frequency Characteristics

### ■ Insertion Loss



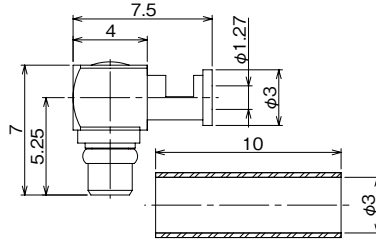
### ■ V.S.W.R.



## Right Angle Plug

- For  $\phi 1.32$  Double Shielded Cable  
For  $\phi 1.13$  Single Shielded Cable

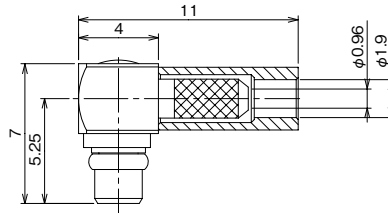
Connects with U.FL.



Part No.	HRS No.	Purchase Unit
MMCX-LP-066(40)	CL0339-0019-2-40	20pcs per bag

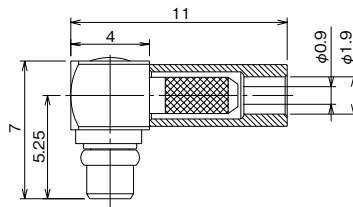
- For  $\phi 1.37$  Single Shielded Cable

Connects with U.FL.



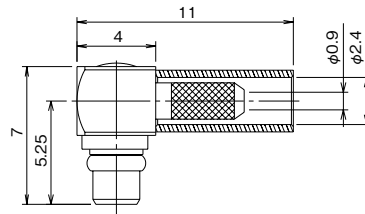
Part No.	HRS No.	Purchase Unit
MMCX-LP-088(40)	CL0339-0020-1-40	20pcs per bag

- For  $\phi 1.48$  Single Shielded Cable



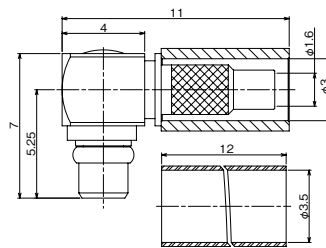
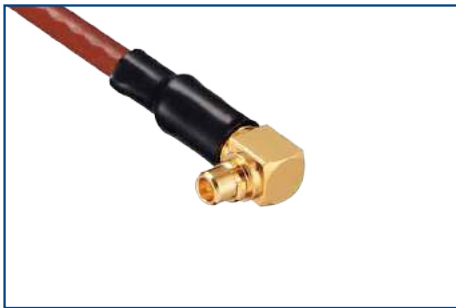
Part No.	HRS No.	Purchase Unit
MMCX-LP-FHSB(40)	CL0339-0007-3-40	100pcs per bag

● For RG-178B/U Cable



Part No.	HRS No.	Purchase Unit
MMCX-LP-178B/U(40)	CL0339-0001-7-40	20pcs per bag

● For RG-316/U Cable

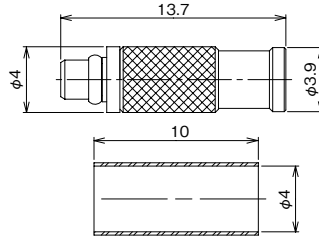


Part No.	HRS No.	Remarks
MMCX-LP-316/U(40)	CL0339-0006-0-40	We accept cable assembly specifications. Please contact a Hirose sales representative.

## Straight Plug

- For  $\phi 1.32$  Double Shielded Cable  
For  $\phi 1.13$  Single Shielded Cable

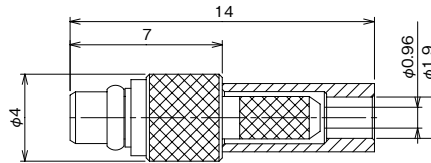
Connects with U.FL.



Part No.	HRS No.	Purchase Unit
MMCX-P-066(40)	CL0339-0023-0-40	100pcs per bag

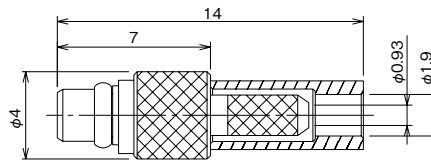
- For  $\phi 1.37$  Single Shielded Cable

Connects with U.FL.



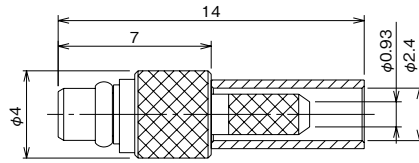
Part No.	HRS No.	Purchase Unit
MMCX-P-088(40)	CL0339-0021-4-40	20pcs per bag

- For  $\phi 1.48$  Single Shielded Cable



Part No.	HRS No.	Purchase Unit
MMCX-P-FHSB(40)	CL0339-0008-6-40	100pcs per bag

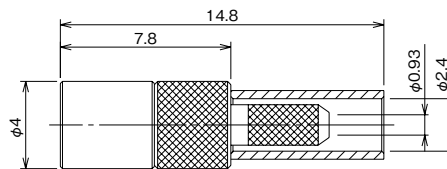
● For RG-178B/U Cable



Part No.	HRS No.	Purchase Unit
MMCX-P-178B/U(40)	CL0339-0010-8-40	20pcs per bag

**Straight Jack**

● For RG-178B/U Cable

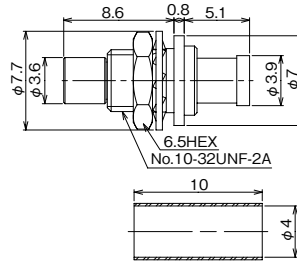


Part No.	HRS No.	Purchase Unit
MMCX-J-178B/U(40)	CL0339-0011-0-40	100pcs per bag

## Panel Jack

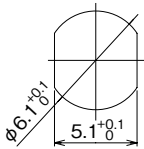
- For  $\phi 1.32$  Double Shielded Cable  
For  $\phi 1.13$  Single Shielded Cable

Connects with U.F.L.



Part No.	HRS No.	Remarks
MMCX-BPJ-066(40)	CL0339-0016-4-40	We accept cable assembly specifications. Please contact a Hirose sales representative.

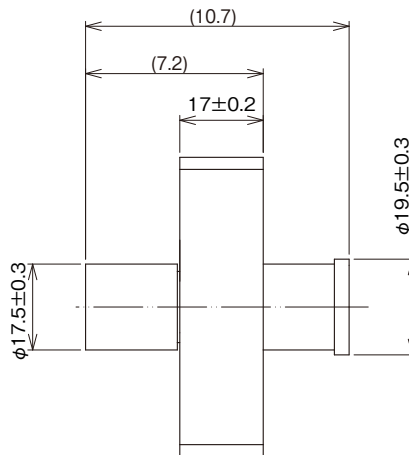
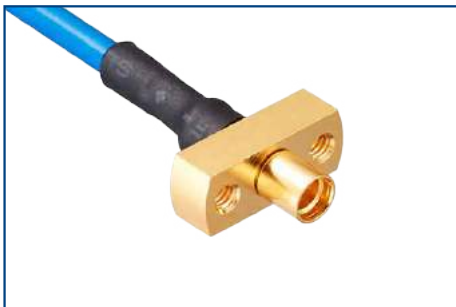
### Panel Cut-Out Dimensions



Recommended Panel Thickness : 1.3 to 2.5mm

- For Semi-flexible Cable (Low Loss Type)

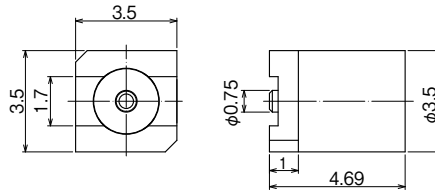
External conductor diameter equivalent to 0.085 Inches. (With jacket finishing diameter is  $\phi 2.5$ .)



Part No.	HRS No.	Remarks
MMCX-PJ-SF085	CL0339-0045-0-00	We accept cable assembly specifications. Please contact a Hirose sales representative.

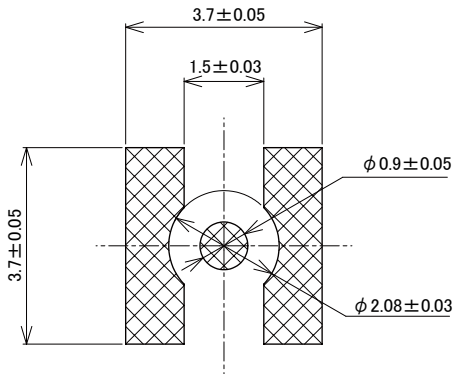
## Receptacle

### ● For Straight SMT

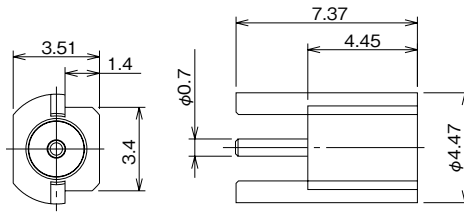


Part No.	HRS No.	Purchase Unit
MMCX-R-SMT-8	CL0339-0046-0-00	500pcs per reel

### ■ Recommended PCB Layout

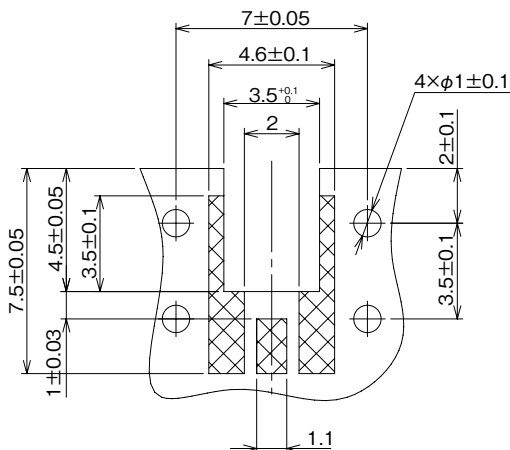


### ● For Right Angle SMT

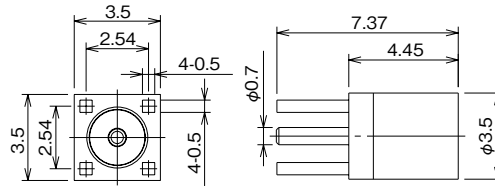


Part No.	HRS No.	Purchase Unit
MMCX-LR-SMT(40)	CL0339-0003-2-40	50pcs per tray

### ■ Recommended PCB Layout

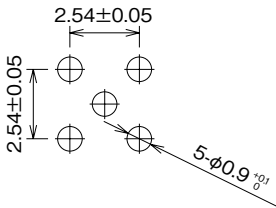


### ● For Straight Through-Hole

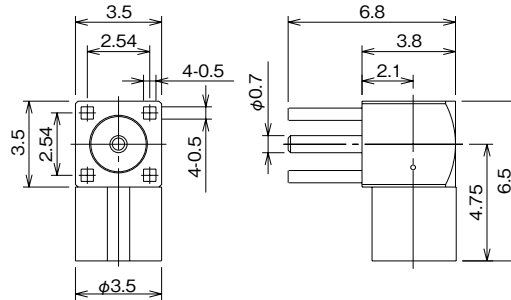
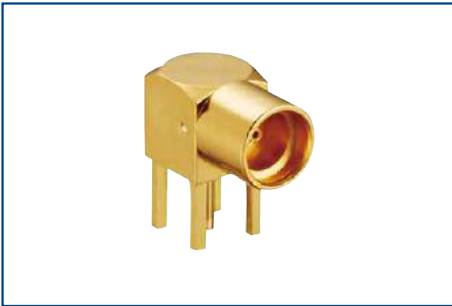


Part No.	HRS No.	Purchase Unit
MMCX-R-PC(40)	CL0339-0005-8-40	100pcs per bag

### ■ Recommended PCB Dimensions

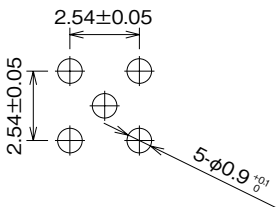


### ● For Right Angle Through-Hole



Part No.	HRS No.	Purchase Unit
MMCX-LR-PC-1(40)	CL0339-0013-6-40	10pcs per bag

### ■ Recommended PCB Dimensions





## Plug/Jack Termination Tools

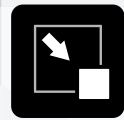
Item	Part No.	Tool	HRS No.	Usage
Right Angle Plug	MMCX-LP-066(40)	MMCX-LP/PR-MP	CL0902-3064-6-00	Cap Press Fitting
	MMCX-LP-088(40)	HT103/MRF01-J-178	CL0350-0128-5-00	Outer Conductor Tightening
		MMCX-LP/PR-MP	CL0902-3064-6-00	Cap Press Fitting
	MMCX-LP-FHSB(40)	HT103/MRF01-J-178	CL0350-0128-5-00	Outer Conductor Tightening
		MMCX-LP/PR-MP	CL0902-3064-6-00	Cap Press Fitting
	MMCX-LP-178B/U(40)	HT103/MRF01-J-178	CL0350-0128-5-00	Outer Conductor Tightening
MMCX-LP/PR-MP		CL0902-3064-6-00	Cap Press Fitting	
Straight Plug	MMCX-P-066(40)	MMCX-P-066/CV-MD	CL0902-3272-0-00	Clamp Press Fitting
	MMCX-P-088(40)	HT103/MRF01-J-178	CL0350-0128-5-00	Outer Conductor Tightening
	MMCX-P-FHSB(40)	HT103/MRF01-J-178	CL0350-0128-5-00	Outer Conductor Tightening
	MMCX-P-178B/U(40)	HT103/MRF01-J-178	CL0350-0128-5-00	Outer Conductor Tightening
Straight Jack	MMCX-J-178B/U(40)	HT103/MRF01-J-178	CL0350-0128-5-00	Outer Conductor Tightening

## MMCX-AR Series

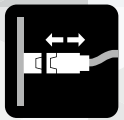
# Outer Conductor Contact Reinforced Plug Connector [MMCX(AR)]



MMCX



Compact



Push On



## Product Number Structure

Refer to the chart below when determining the product specifications from the product number.  
Please select from the product numbers listed in this catalog when placing orders.

### MMCX (AR) - LP - 066

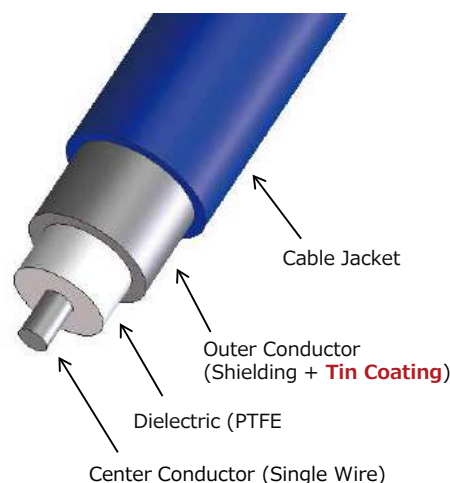
①      ②      ③      ④

① Series Name	MMCX	④ Applicable Cable or Board Mounting Style	178B/U : RG-178B/U ( $\phi$ 1.8)
② Outer Conductor Contact Reinforced Type	(AR)		FHSB : $\phi$ 1.48 (Single Shielded Cable) Coaxial Fluororesin Cable
③ Connector Type	P : Straight Plug LP : Right Angle Plug TMP : Termination Plug		088 : $\phi$ 1.37 (Single Shielded Cable) Coaxial Fluororesin Cable 066 : $\phi$ 1.32 (Double Shielded Cable) Coaxial Fluororesin Cable SF085 : External Conductor Diameter Equivalent to 0.085 Inches (With Jacket Finishing Diameter is $\phi$ 2.5) SF047 : External Conductor Diameter Equivalent to 0.047 Inches (With Jacket Finishing Diameter is $\phi$ 1.44)

## [Reference] Semi-flexible Cable Configuration and Cable Loss Comparison

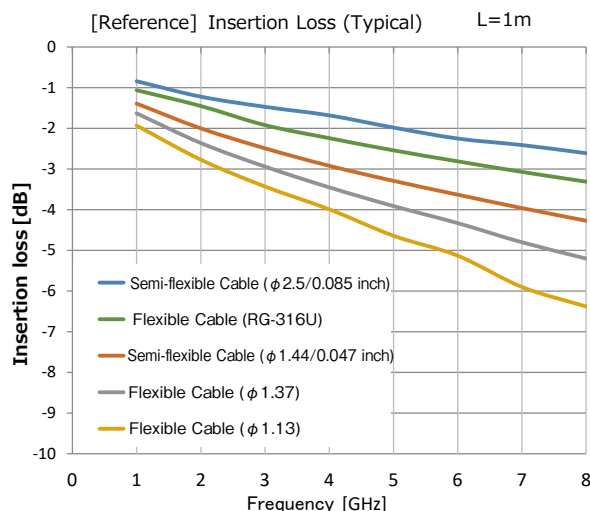
### Semi-flexible Cable Configuration

**Excellent Electrical Performance Due to Tin-Coated Braided Shielding**



### Insertion Loss Comparison

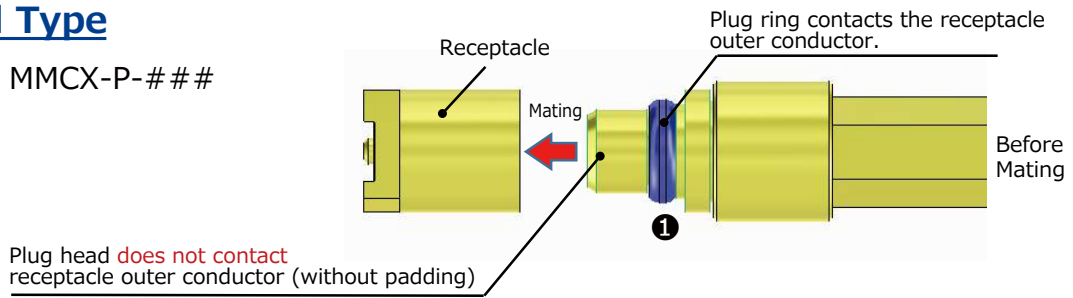
(Semi-flexible Cable & Flexible Cable)



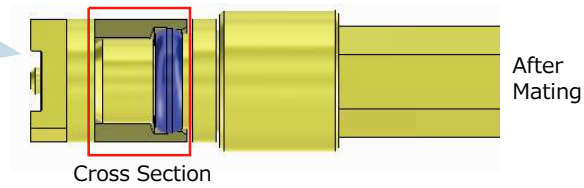
## Standard Type and Outer Conductor Contact Reinforced Type [MMCX(AR)]

### Standard Type

Product : MMCX-P-# # #



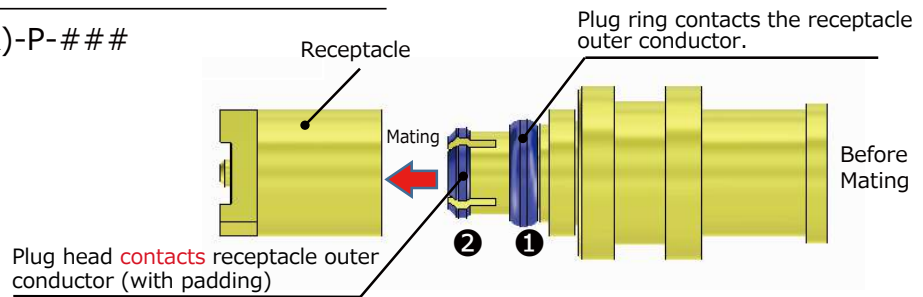
Only a single point makes contact with the outer conductor.



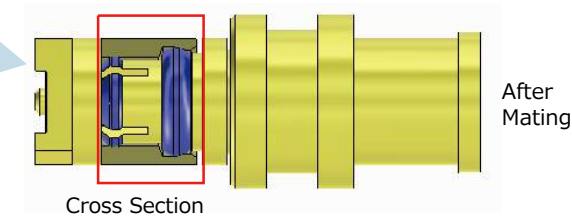
### Outer Conductor Contact Reinforced Type [MMCX(AR)]

Since the contact is strengthened compared to the standard type, mating feels tighter.

Product : MMCX(AR)-P-# # #



Contact with the receptacle outer conductor at two points enhances prying force and ensures high contact reliability even in difficult wiring conditions.



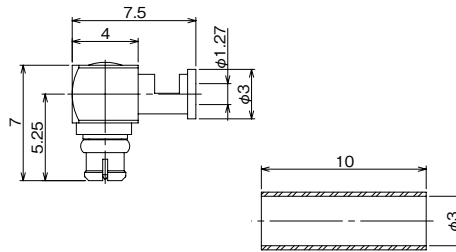
### Mating and Extraction Forces Comparison (Reference Value)

(Reference Value)	Mating Force	Extraction Force
Standard Type	15N	15N
Outer Conductor Contact Reinforced Type [MMCX(AR)]	35N	25N

## Right Angle Plug

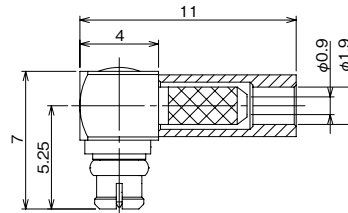
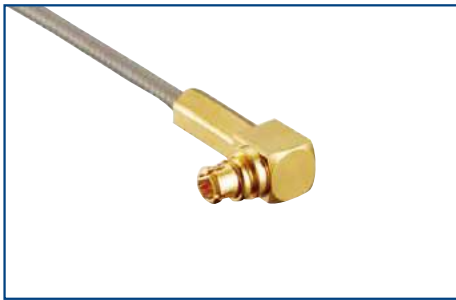
- For  $\phi 1.32$  Double Shielded Cable  
For  $\phi 1.13$  Single Shielded Cable

Connects with U.F.L.



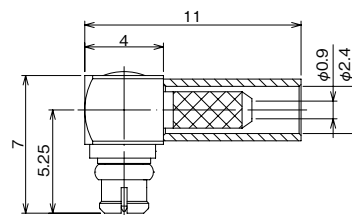
Part No.	HRS No.	Purchase Unit
MMCX(AR)-LP-066	CL0339-0031-8-00	20pcs per bag

- For  $\phi 1.48$  Single Shielded Cable



Part No.	HRS No.	Purchase Unit
MMCX(AR)-LP-FHSB	CL0339-0035-9-00	100pcs per bag

- For RG-178B/U Cable

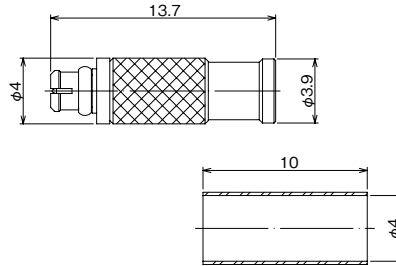


Part No.	HRS No.	Purchase Unit
MMCX(AR)-LP-178B/U	CL0339-0033-3-00	100pcs per bag

## Straight Plug

- For  $\phi 1.32$  Double Shielded Cable  
For  $\phi 1.13$  Single Shielded Cable

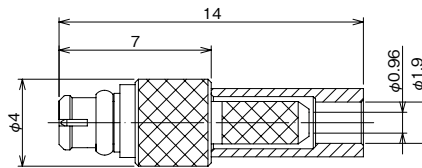
Connects with U.FL.



Part No.	HRS No.	Purchase Unit
MMCX(AR)-P-066	CL0339-0030-5-00	100pcs per bag

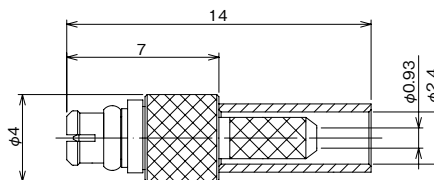
- For  $\phi 1.37$  Single Shielded Cable

Connects with U.FL.



Part No.	HRS No.	Purchase Unit
MMCX(AR)-P-088	CL0339-0037-4-00	20pcs per bag

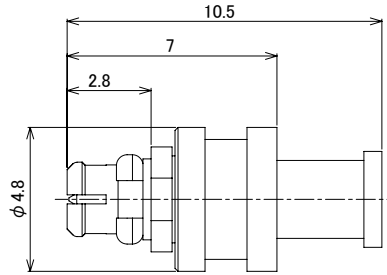
- For RG-178B/U Cable



Part No.	HRS No.	Purchase Unit
MMCX(AR)-P-178B/U	CL0339-0038-7-00	100pcs per bag

### ● For Semi-flexible Cable (Low Loss Type)

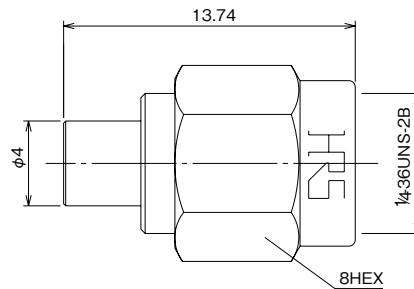
External conductor diameter equivalent to 0.047 Inches. (With jacket finishing diameter is  $\phi$ 1.44.)



Part No.	HRS No.	Remarks
MMCX(AR)-P-SF047	CL0339-0032-0-00	We accept cable assembly specifications. Please contact a Hirose sales representative.

## Conversion Adapter

### ● SMA Conversion Adapter (Mated Portion : SMA Plug - MMCX Jack)



Part No.	HRS No.	Purchase Unit
HRMP-MMCXJ	CL0311-0312-1-00	20pcs per bag

Note : Can be used with standard type and outer conductor contact reinforced type (MMCX[AR]) MMCX plugs.

## Plug Termination Tools

Item	Part No.	Tool	HRS No.	Usage
Right Angle Plug	MMCX(AR)-LP-066	MMCX-LP/PR-MP	CL0902-3064-6-00	Cap Press Fitting
	MMCX(AR)-LP-FHSB	HT103/MRF01-J-178	CL0350-0128-5-00	Outer Conductor Tightening
		MMCX-LP/PR-MP	CL0902-3064-6-00	Cap Press Fitting
	MMCX(AR)-LP-178B/U	HT103/MRF01-J-178	CL0350-0128-5-00	Outer Conductor Tightening
MMCX-LP/PR-MP		CL0902-3064-6-00	Cap Press Fitting	
Straight Plug	MMCX(AR)-P-066	MMCX-P-066/CV-MD	CL0902-3272-0-00	Clamp Press Fitting
	MMCX(AR)-P-088	HT103/MRF01-J-178	CL0350-0128-5-00	Outer Conductor Tightening
	MMCX(AR)-P-178B/U	HT103/MRF01-J-178	CL0350-0128-5-00	Outer Conductor Tightening

## While Taking into Consideration

Specifications mentioned in this catalog are reference values.

When considering to order or use this product, please confirm the Drawing and Product Specifications sheets.

Use an appropriate cable when using the connector in combination with cables.

If considering usage of a non-specified cable, please contact your sales representative.

If assembly process is done by jigs & tools which are not identified by Hirose, assurance will not be given.

If considering usage for below mentioned applications, please contact your sales representative.





In cases where the application will demand a high level of reliability, such as automotive, medical instruments, public infrastructure, aerospace/ defense etc. Hirose must review before assurance of reliability can be given.

## Looking for pricing, stock, or lifecycle information?

Click below to explore more details on WIN SOURCE:

-  [View MMCX-LR-SMT\(40\) on WIN SOURCE](#)
-  [Hirose Electric Co Ltd Information](#)

## Optimize Your Supply Chain with WIN SOURCE Solutions

-  Global Sourcing Solution
-  Obsolete Management
-  Cost Control Management
-  Shortage Management
-  Alternative Solution
-  Excess Inventory Management