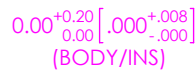
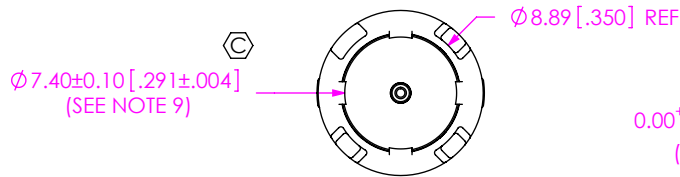
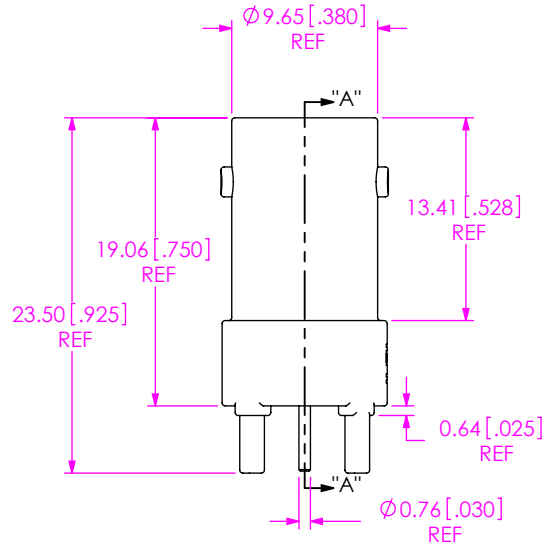
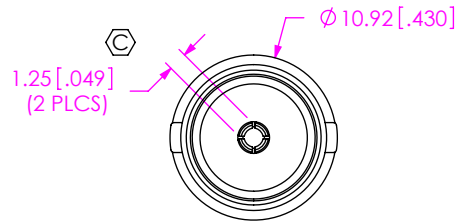




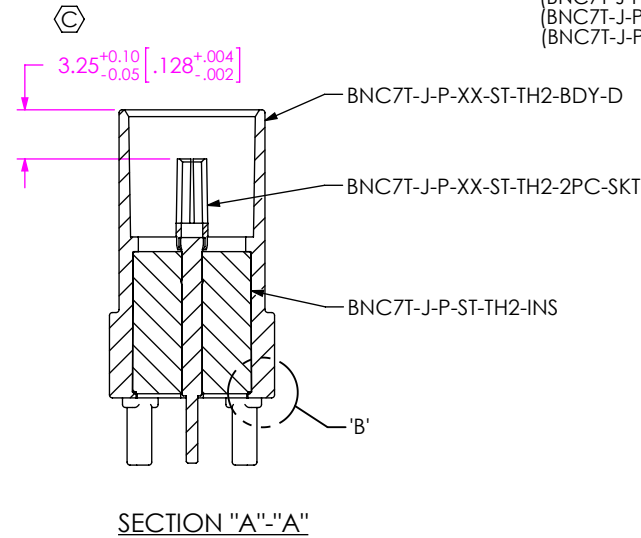
**THE DATASHEET OF
BNC7T-J-P-GN-ST-TH2D**



**DESIGNED & DIMENSIONED
IN MILLIMETERS [INCHES]**



**DETAIL 'B'
SCALE 4 : 1**



BNC7T-J-P-XX-ST-TH2D

GENDER
-J: JACK

TYPE
-P: PCB

TERMINATION
-TH2D: DIE CAST THROUGH HOLE

ORIENTATION
-ST: STRAIGHT

PLATING SPECIFICATION

-HN: HEAVY GOLD/NICKEL (SEE NOTES 6 & 7)
(BNC7T-J-P-DN-ST-TH2-BDY-D)
(BNC7T-J-P-ST-TH2-INS)
(BNC7T-J-P-HN-ST-TH2-2PC-SKT)

-GN: HEAVY GOLD/NICKEL (SEE NOTES 6 & 7)
(BNC7T-J-P-DN-ST-TH2-BDY-D)
(BNC7T-J-P-ST-TH2-INS)
(BNC7T-J-P-GN-ST-TH2-2PC-SKT)

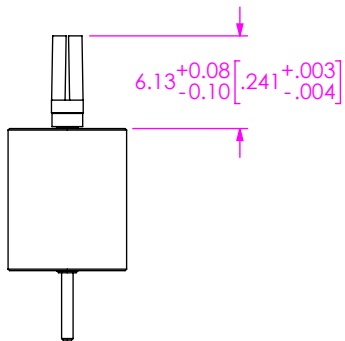


**FIG 1
BNC7T-J-P-XX-ST-TH2D SHOWN**

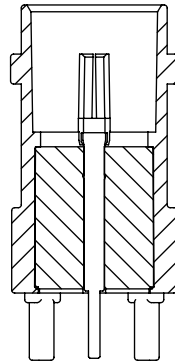
NOTES:

1. Ⓢ REPRESENTS A CRITICAL DIMENSION.
2. PUSHOUT FORCE FOR CENTER CONTACT: 26.69 N [6.0 LB] MIN.
3. PUSHOUT FORCE FOR INSULATOR: 53.38 N [12.0 LB] MIN.
4. SEE CO-HD-WI-3040-M RF PACKAGING STANDARD FOR PACKAGING INSTRUCTIONS.
PRODUCT TO BE PACKAGED IN TRAY TY-BNC001-1 WITH COVER TY-SMA001-2.
5. ROHS COMPLIANT.
6. PLATING: -H: .000030" MIN GOLD OVER .000050" MIN. NICKEL.
-G: .000010" MIN GOLD OVER .000050" MIN. NICKEL.
-N: .000100" MIN NICKEL.
7. ASSEMBLY PLATING DESIGNATIONS:
-HN: (CENTER CONTACT)-H
(OUTER CONTACT)-N
-GN: (CENTER CONTACT)-G
(OUTER CONTACT)-N
8. NOTE DELETED.
9. 0.10 [.004] BURR ALLOWED IN SPECIFIED AREA ONLY.
10. FOR APPLICATIONS REQUIRING INVERTED REFLOW SOLDERING, USE OF AN EPOXY ADHESIVE IS RECOMMENDED.

<p>UNLESS OTHERWISE SPECIFIED DIMENSIONS ARE IN MILLIMETERS [INCHES]</p> <p>TOLERANCES ARE:</p> <p>DECIMALS ANGLES</p> <p>.X: ±0.3 [.01] 2°</p> <p>.XX: ±0.13 [.005]</p> <p>.XXX: ±0.051 [.0020]</p>	<p>PROPRIETARY NOTE</p> <p>THIS DOCUMENT CONTAINS CONFIDENTIAL AND PROPRIETARY INFORMATION AND ALL DESIGN, MANUFACTURING, REPRODUCTION, USE, PATENT RIGHTS AND SALES RIGHTS ARE EXPRESSLY RESERVED BY SAMTEC, INC. THIS DOCUMENT SHALL NOT BE DISCLOSED, IN WHOLE OR PART, TO ANY UNAUTHORIZED PERSON OR ENTITY NOR REPRODUCED, TRANSFERRED OR INCORPORATED IN ANY OTHER PROJECT IN ANY MANNER WITHOUT THE EXPRESS WRITTEN CONSENT OF SAMTEC, INC.</p>	<p>samtec</p> <p>520 PARK EAST BLVD, NEW ALBANY, IN 47150 PHONE: 812-944-6733 FAX: 812-948-5047 e-Mail: info@SAMTEC.com code 53322</p> <p>DESCRIPTION: TRUE 75OHM BNC ELEVATED STRAIGHT JACK</p> <p>DWG. NO. BNC7T-J-P-XX-ST-TH2D</p> <p>BY: D. PARMAR 10/21/2009 SHEET 1 OF 2</p>
<p>MATERIAL: SHELL: ZINC CONTACT: COPPER ALLOY DIELECTRIC: PTFE</p>	<p>DO NOT SCALE DRAWING SHEET SCALE: 2:1</p>	

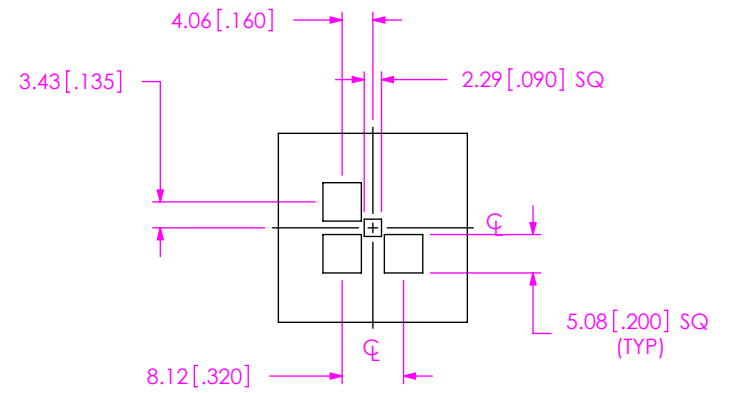


IN-PROCESS 1
INSERT CONTACT INTO INSULATOR

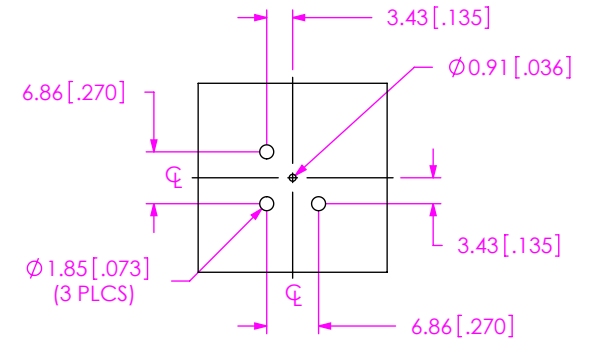


IN-PROCESS 2
INSERT INSULATOR INTO BODY
& SWAGE RETENTION TABS

NOTE:
STENCIL TO BE 0.15 [.006] THICK.



RECOMMENDED STENCIL LAYOUT



RECOMMENDED PCB LAYOUT

PROPRIETARY NOTE
THIS DOCUMENT CONTAINS CONFIDENTIAL AND PROPRIETARY INFORMATION AND ALL DESIGN, MANUFACTURING, REPRODUCTION, USE, PATENT RIGHTS AND SALES RIGHTS ARE EXPRESSLY RESERVED BY SAMTEC, INC. THIS DOCUMENT SHALL NOT BE DISCLOSED, IN WHOLE OR PART, TO ANY UNAUTHORIZED PERSON OR ENTITY NOR REPRODUCED, TRANSFERRED OR INCORPORATED IN ANY OTHER PROJECT IN ANY MANNER WITHOUT THE EXPRESS WRITTEN CONSENT OF SAMTEC, INC.



520 PARK EAST BLVD., NEW ALBANY, IN 47150
PHONE: 812-944-6733 FAX: 812-948-5047
e-Mail: info@SAMTEC.com code 55322

SHEET SCALE: 2:1



DESCRIPTION:
TRUE 75OHM BNC ELEVATED STRAIGHT JACK

DWG. NO.
BNC7T-J-P-XX-ST-TH2D

BY: D. PARMAR 10/21/2009 SHEET 2 OF 2

Looking for pricing, stock, or lifecycle information?

Click below to explore more details on WIN SOURCE:

-  [View BNC7T-J-P-GN-ST-TH2D on WIN SOURCE](#)
-  [Samtec Inc. Information](#)

Optimize Your Supply Chain with WIN SOURCE Solutions

-  Global Sourcing Solution
-  Obsolete Management
-  Cost Control Management
-  Shortage Management
-  Alternative Solution
-  Excess Inventory Management