



**THE DATASHEET OF
RS02B2R000FE70**



Wirewound Resistors, Industrial, Precision Power, Silicone Coated, Axial Lead



LINKS TO ADDITIONAL RESOURCES



FEATURES

- High temperature coating (> 350 °C)
- Complete welded construction
- Meets applicable requirements of MIL-PRF-26
- Available in non-inductive styles (type NS) with Ayrtton-Perry winding for lowest reactive components
- Excellent stability in operation (typical resistance shift < 0.5 %)
- MIL-PRF-26 qualified, type RW resistors can be found at: www.vishay.com/doc?30281
- Material categorization: for definitions of compliance please see www.vishay.com/doc?99912


RoHS*
Available

HALOGEN FREE
Available

GREEN
(5-2008)
Available

Note

* This datasheet provides information about parts that are RoHS-compliant and / or parts that are non RoHS-compliant. For example, parts with lead (Pb) terminations are not RoHS-compliant. Please see the information / tables in this datasheet for details

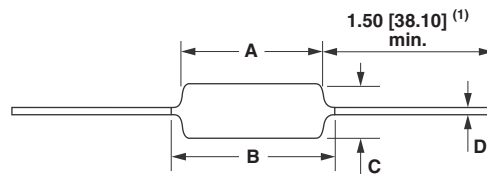
| STANDARD ELECTRICAL SPECIFICATIONS | | | | | | | | | | |
|------------------------------------|-------------|-----------------|--|--|--|---|--|--|---|-----------------------|
| GLOBAL MODEL | HIST. MODEL | MIL-PRF-26 TYPE | POWER RATING (3) $P_{25\text{ }^\circ\text{C}}$ W U $\pm 0.05\%$ TO $\pm 5\%$ | POWER RATING (3) $P_{25\text{ }^\circ\text{C}}$ W V $\pm 3\%$ TO $\pm 10\%$ | RESISTANCE RANGE Ω $\pm 0.05\%$ | RESISTANCE RANGE Ω $\pm 0.1\%$ | RESISTANCE RANGE Ω $\pm 0.25\%$ | RESISTANCE RANGE Ω $\pm 0.5\%$, $\pm 1\%$ | RESISTANCE RANGE Ω $\pm 3\%$, $\pm 5\%$, $\pm 10\%$ | WEIGHT (typical) g |
| RS1/4 | RS-1/4 | - | 0.4 | - | 1 to 1K | 0.499 to 1K | 0.499 to 3.4K | 0.1 to 3.4K | 0.1 to 3.4K | 0.21 |
| RS1/2 | RS-1/2 | - | 0.75 | - | 1 to 1.3K | 0.499 to 1.3K | 0.499 to 4.9K | 0.1 to 4.9K | 0.1 to 4.9K | 0.23 |
| RS01A | RS-1A | - | 1.0 | - | 1 to 2.74K | 0.499 to 2.74K | 0.499 to 10.4K | 0.1 to 10.4K | 0.1 to 10.4K | 0.34 |
| RS01A...300 | RS-1A-300 | RW70 (2) | 1.0 | - | - | 0.499 to 2.74K | 0.499 to 2.74K | 0.1 to 2.74K | 0.1 to 2.74K | 0.34 |
| RS01M | RS-1M | - | 1.0 | - | 1 to 1.32K | 0.499 to 1.67K | 0.499 to 6.85K | 0.1 to 6.85K | 0.1 to 6.85K | 0.30 |
| RS002 | RS-2 | - | 4.0 | 5.5 | 0.499 to 12.7K | 0.499 to 12.7K | 0.1 to 47.1K | 0.1 to 47.1K | 0.1 to 47.1K | 2.10 |
| RS02M | RS-2M | - | 3.0 | - | 0.499 to 4.49K | 0.499 to 4.49K | 0.1 to 18.74K | 0.1 to 18.74K | 0.1 to 18.74K | 0.65 |
| RS02B | RS-2B | - | 3.0 | 3.75 | 0.499 to 6.5K | 0.499 to 6.5K | 0.1 to 24.5K | 0.1 to 24.5K | 0.1 to 24.5K | 0.70 |
| RS02B...300 | RS-2B-300 | RW79 (2) | 3.0 | - | - | 0.499 to 6.49K | 0.1 to 6.49K | 0.1 to 6.49K | 0.1 to 6.49K | 0.70 |
| RS02C | RS-2C | - | 2.5 | 3.25 | 0.499 to 8.6K | 0.499 to 8.6K | 0.1 to 32.3K | 0.1 to 32.3K | 0.1 to 32.3K | 1.6 |
| RS02C...17 | RS-2C-17 | - | 2.5 | 3.25 | 0.499 to 8.6K | 0.499 to 8.6K | 0.1 to 32.3K | 0.1 to 32.3K | 0.1 to 32.3K | 1.6 |
| RS02C...23 | RS-2C-23 | RW69 (1) | - | 3.25 | - | - | - | - | 0.1 to 2.0K | 1.6 |
| RS005 | RS-5 | - | 5.0 | 6.5 | 0.499 to 25.7K | 0.499 to 25.7K | 0.1 to 95.2K | 0.1 to 95.2K | 0.1 to 95.2K | 4.2 |
| RS005...69 | RS-5-69 | RW74 (2) | 5.0 | - | - | 0.499 to 24.3K | 0.1 to 24.3K | 0.1 to 24.3K | 0.1 to 24.3K | 4.2 |
| RS005...70 | RS-5-70 | RW67 (1) | - | 6.5 | - | - | - | 0.1 to 8.5K | 0.1 to 8.5K | 4.2 |
| RS007 | RS-7 | - | 7.0 | 9.0 | 0.499 to 41.4K | 0.499 to 41.4K | 0.1 to 154K | 0.1 to 154K | 0.1 to 154K | 4.7 |
| RS010 | RS-10 | - | 10.0 | 13.0 | 0.499 to 73.4K | 0.499 to 73.4K | 0.1 to 273K | 0.1 to 273K | 0.1 to 273K | 9.0 |
| RS010...38 | RS-10-38 | RW78 (2) | 10.0 | - | - | 0.499 to 71.5K | 0.1 to 71.5K | 0.1 to 71.5K | 0.1 to 71.5K | 9.0 |
| RS010...39 | RS-10-39 | RW68 (1) | - | 13.0 | - | - | - | 0.1 to 20K | 0.1 to 20K | 9.0 |

Notes

- Models not available as lead (Pb)-free: RS01A...300, RS02B...300, RS02C...23, RS005...69, RS005...70, RS010...38, RS010...39
- Shaded area indicates most popular models
- (1) Available tolerance for these MIL parts is $\pm 5\%$ for 1 Ω and above, $\pm 10\%$ below 1 Ω
- (2) Available tolerance for these MIL parts is $\pm 0.5\%$ and $\pm 1\%$ for resistance values 0.1 Ω and above, $\pm 0.1\%$ for resistance values 0.499 Ω and above
- (3) Vishay Dale RS models have two power ratings depending on operation temperature and stability requirements. Models not available for characteristic V are: RS1/4, RS1/2, RS01A, RS01A...300, RS01M, RS02M, RS02B...300, RS005...69, and RS010...38

| GLOBAL PART NUMBER INFORMATION | | | | | | | | | | | | | | | | |
|--|--|---|------------------|---|---|----------------|--|---|-----------|---|---|---|---|---|---|--|
| Global Part Numbering Example: RS02C10K00FS7017 | | | | | | | | | | | | | | | | |
| R | S | 0 | 2 | C | 1 | 0 | K | 0 | 0 | F | S | 7 | 0 | 1 | 7 | |
| GLOBAL MODEL (5 digits) | RESISTANCE VALUE (5 digits) | TOLERANCE CODE (1 digit) | | | | | PACKAGING (3 digits) | | | | | SPECIAL (up to 3 digits) | | | | |
| (see Standard Electrical Specifications Global Model column for options) | R = decimal K = thousand 15R00 = 15 Ω 10K00 = 10 kΩ | A = 0.05 % B = 0.1 % C = 0.25 % D = 0.5 % F = 1.0 % H = 3.0 % J = 5.0 % K = 10.0 % | | | | | E70 = lead (Pb)-free, tape / reel (smaller than RS005) E73 = lead (Pb)-free, tape / reel E12 = lead (Pb)-free, bulk S70 = tin / lead, tape / reel (smaller than RS005) S73 = tin / lead, tape / reel B12 = tin / lead, bulk | | | | | (dash number) From 1 to 999 as applicable | | | | |
| Historical Part Numbering Example: RS-2C-17 10 kΩ 1 % S70 | | | | | | | | | | | | | | | | |
| RS-2C-17 | | | 10 kΩ | | | 1 % | | | S70 | | | | | | | |
| HISTORICAL MODEL | | | RESISTANCE VALUE | | | TOLERANCE CODE | | | PACKAGING | | | | | | | |

DIMENSIONS in inches [millimeters]



| GLOBAL MODEL | DIMENSIONS in inches [millimeters] | | | |
|-----------------------------------|------------------------------------|------------------|---|----------------------------------|
| | A | B (2) (max.) | C | D |
| RS1/4 | 0.250 ± 0.031 [6.35 ± 0.787] | 0.281 [7.14] | 0.085 ± 0.020 [2.16 ± 0.508] | 0.020 ± 0.002 [0.508 ± 0.051] |
| RS1/2 | 0.312 ± 0.016 [7.92 ± 0.406] | 0.328 [8.33] | 0.078 + 0.016 - 0.031 [1.98 + 0.406 - 0.787] | 0.020 ± 0.002 [0.508 ± 0.051] |
| RS01A RS01A...300 | 0.406 ± 0.031 [10.31 ± 0.787] | 0.437 [11.10] | 0.094 ± 0.031 [2.39 ± 0.787] | 0.020 ± 0.002 [0.508 ± 0.051] |
| RS01M | 0.270 ± 0.031 [6.86 ± 0.787] | 0.311 [7.90] | 0.110 ± 0.015 [2.79 ± 0.381] | 0.020 ± 0.002 [0.508 ± 0.051] |
| RS002 | 0.625 ± 0.062 [15.88 ± 1.57] | 0.765 [19.43] | 0.250 ± 0.031 [6.35 ± 0.787] | 0.040 ± 0.002 [1.02 ± 0.051] |
| RS02M | 0.500 ± 0.062 [12.70 ± 1.57] | 0.562 [14.27] | 0.185 ± 0.031 [4.70 ± 0.787] | 0.032 ± 0.002 [0.813 ± 0.051] |
| RS02B RS02B...300 | 0.560 ± 0.062 [14.22 ± 1.57] | 0.622 [15.80] | 0.187 ± 0.031 [4.75 ± 0.787] | 0.032 ± 0.002 [0.813 ± 0.051] |
| RS02C | 0.500 ± 0.062 [12.70 ± 1.57] | 0.593 [15.06] | 0.218 ± 0.031 [5.54 ± 0.787] | 0.040 ± 0.002 [1.02 ± 0.051] |
| RS02C...17 RS02C...23 | 0.500 ± 0.062 [12.70 ± 1.57] | 0.593 [15.06] | 0.218 ± 0.031 [5.54 ± 0.787] | 0.032 ± 0.002 [0.813 ± 0.051] |
| RS005 RS005...69 RS005...70 | 0.875 ± 0.062 [22.23 ± 1.57] | 1.0 [25.4] | 0.312 ± 0.031 [7.92 ± 0.787] | 0.040 ± 0.002 [1.02 ± 0.051] |
| RS007 | 1.22 ± 0.062 [30.99 ± 1.57] | 1.28 [32.51] | 0.312 ± 0.031 [7.92 ± 0.787] | 0.040 ± 0.002 [1.02 ± 0.051] |
| RS010 RS010...39 | 1.78 ± 0.062 [45.21 ± 1.57] | 1.87 [47.50] | 0.375 ± 0.031 [9.53 ± 0.787] | 0.040 ± 0.002 [1.02 ± 0.051] |
| RS010...38 | 1.78 ± 0.062 [45.21 ± 1.57] | 1.84 [46.74] | 0.375 ± 0.031 [9.53 ± 0.787] | 0.040 ± 0.002 [1.02 ± 0.051] |

Notes

- (1) On some standard reel pack methods, the leads may be trimmed to a shorter length than shown
- (2) B (max.) dimension is clean lead to clean lead



MATERIAL SPECIFICATIONS

Element: copper-nickel alloy or nickel-chrome alloy, depending on resistance value

Core: ceramic, steatite or alumina, depending on physical size

Coating: special high temperature silicone

Standard Terminals: 100 % Sn, or 60/40 Sn/Pb coated Copperweld®

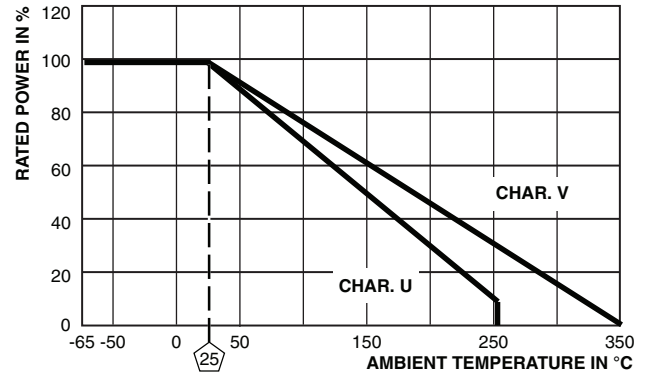
End Caps: stainless steel

Part Marking: DALE, model, wattage ⁽¹⁾, value, tolerance, date code

Note

⁽¹⁾ Wattage marked on part will be "U" characteristic

DERATING



NS NON-INDUCTIVE

Models of equivalent physical and electrical specifications are available with non-inductive (Ayrton-Perry) winding. They are identified by substituting the letter N for R in the model number (NS005, for example).

Two conditions apply:

1. For NS models, divide maximum resistance values by two
2. Body O.D. on NS02C may exceed that of the RS02C by 0.010"

| TECHNICAL SPECIFICATIONS | | |
|-----------------------------|--------|--|
| PARAMETER | UNIT | RS RESISTOR CHARACTERISTICS |
| Temperature Coefficient | ppm/°C | ± 20 for 10 Ω and above, ± 50 for 1 Ω to 9.9 Ω, ± 90 for 0.5 Ω to 0.99 Ω |
| Maximum Working Voltage | V | $(P \times R)^{1/2}$ |
| Insulation Resistance | Ω | 1000 MΩ minimum dry, 100 MΩ minimum after moisture test |
| Operating Temperature Range | °C | Characteristic U = -65 to +250, characteristic V = -65 to +350 |

| PERFORMANCE | | | |
|---------------------------------|--|-----------------------|-----------------------|
| TEST | CONDITIONS OF TEST | TEST LIMITS | |
| | | CHARACTERISTIC U | CHARACTERISTIC V |
| Thermal Shock | Rated power applied until thermally stable, then a minimum of 15 min at -55 °C | ± (0.2 % + 0.05 Ω) ΔR | ± (2.0 % + 0.05 Ω) ΔR |
| Short Time Overload | 5 x rated power (3.75 W and smaller), 10 x rated power (4 W and larger) for 5 s | ± (0.2 % + 0.05 Ω) ΔR | ± (2.0 % + 0.05 Ω) ΔR |
| Dielectric Withstanding Voltage | 500 V _{RMS} min. for RS1/4 thru RS01A, 1000 V _{RMS} for all others, duration of 1 min | ± (0.1 % + 0.05 Ω) ΔR | ± (0.1 % + 0.05 Ω) ΔR |
| Low Temperature Storage | -65 °C for 24 h | ± (0.2 % + 0.05 Ω) ΔR | ± (2.0 % + 0.05 Ω) ΔR |
| High Temperature Exposure | 250 h at: U = +250 °C, V = +350 °C | ± (0.5 % + 0.05 Ω) ΔR | ± (2.0 % + 0.05 Ω) ΔR |
| Moisture Resistance | MIL-STD-202 method 106, 7b not applicable | ± (0.2 % + 0.05 Ω) ΔR | ± (2.0 % + 0.05 Ω) ΔR |
| Shock, Specified Pulse | MIL-STD-202 method 213, 100 g's for 6 ms, 10 shocks | ± (0.1 % + 0.05 Ω) ΔR | ± (0.2 % + 0.05 Ω) ΔR |
| Vibration, High Frequency | Frequency varied 10 Hz to 2000 Hz, 20 g peak, 2 directions 6 h each | ± (0.1 % + 0.05 Ω) ΔR | ± (0.2 % + 0.05 Ω) ΔR |
| Load Life | 2000 h at rated power, +25 °C, 1.5 h "ON", 0.5 h "OFF" | ± (0.5 % + 0.05 Ω) ΔR | ± (3.0 % + 0.05 Ω) ΔR |
| Terminal Strength | Pull test 5 s to 10 s, 5 lb (RS1/4 thru RS01A), 10 lb for all others; torsion test - 3 alternating directions, 360° each | ± (0.1 % + 0.05 Ω) ΔR | ± (1.0 % + 0.05 Ω) ΔR |



Disclaimer

ALL PRODUCT, PRODUCT SPECIFICATIONS AND DATA ARE SUBJECT TO CHANGE WITHOUT NOTICE TO IMPROVE RELIABILITY, FUNCTION OR DESIGN OR OTHERWISE.

Vishay Intertechnology, Inc., its affiliates, agents, and employees, and all persons acting on its or their behalf (collectively, "Vishay"), disclaim any and all liability for any errors, inaccuracies or incompleteness contained in any datasheet or in any other disclosure relating to any product.

Vishay makes no warranty, representation or guarantee regarding the suitability of the products for any particular purpose or the continuing production of any product. To the maximum extent permitted by applicable law, Vishay disclaims (i) any and all liability arising out of the application or use of any product, (ii) any and all liability, including without limitation special, consequential or incidental damages, and (iii) any and all implied warranties, including warranties of fitness for particular purpose, non-infringement and merchantability.

Statements regarding the suitability of products for certain types of applications are based on Vishay's knowledge of typical requirements that are often placed on Vishay products in generic applications. Such statements are not binding statements about the suitability of products for a particular application. It is the customer's responsibility to validate that a particular product with the properties described in the product specification is suitable for use in a particular application. Parameters provided in datasheets and / or specifications may vary in different applications and performance may vary over time. All operating parameters, including typical parameters, must be validated for each customer application by the customer's technical experts. Product specifications do not expand or otherwise modify Vishay's terms and conditions of purchase, including but not limited to the warranty expressed therein.

Hyperlinks included in this datasheet may direct users to third-party websites. These links are provided as a convenience and for informational purposes only. Inclusion of these hyperlinks does not constitute an endorsement or an approval by Vishay of any of the products, services or opinions of the corporation, organization or individual associated with the third-party website. Vishay disclaims any and all liability and bears no responsibility for the accuracy, legality or content of the third-party website or for that of subsequent links.

Vishay products are not designed for use in life-saving or life-sustaining applications or any application in which the failure of the Vishay product could result in personal injury or death unless specifically qualified in writing by Vishay. Customers using or selling Vishay products not expressly indicated for use in such applications do so at their own risk. Please contact authorized Vishay personnel to obtain written terms and conditions regarding products designed for such applications.

No license, express or implied, by estoppel or otherwise, to any intellectual property rights is granted by this document or by any conduct of Vishay. Product names and markings noted herein may be trademarks of their respective owners.

Looking for pricing, stock, or lifecycle information?

Click below to explore more details on WIN SOURCE:

 [View RS02B2R000FE70 on WIN SOURCE](#)

 [Vishay Information](#)

Optimize Your Supply Chain with WIN SOURCE Solutions

-  Global Sourcing Solution
-  Obsolete Management
-  Cost Control Management
-  Shortage Management
-  Alternative Solution
-  Excess Inventory Management