



**THE DATASHEET OF  
UE76-A20-3000T**



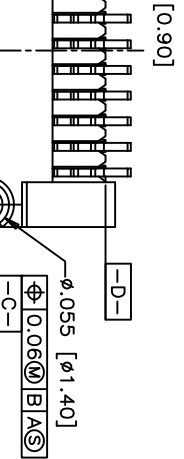
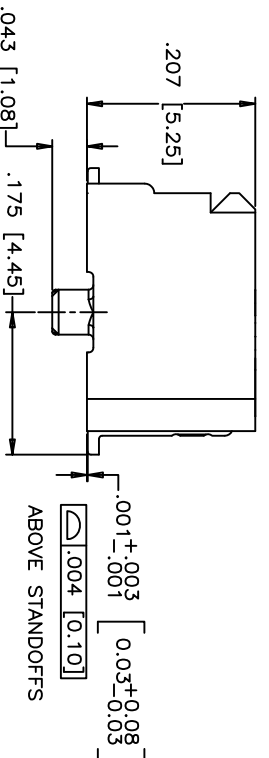
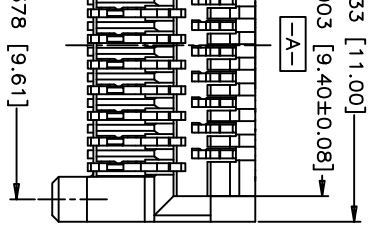
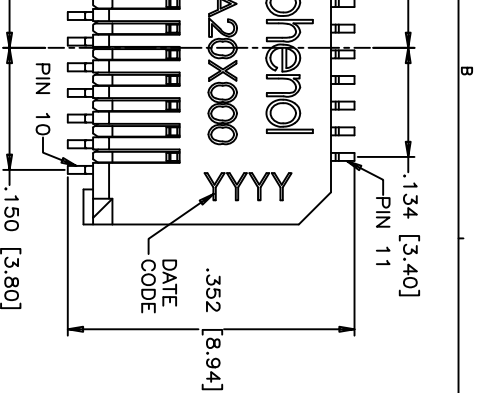
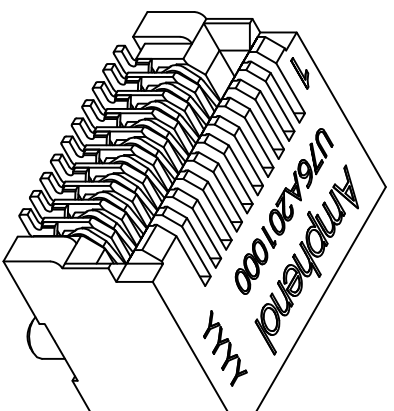
| REVISIONS |                        |           |        |
|-----------|------------------------|-----------|--------|
| STM ZONE  | ECON. ERN NO.          | DATE      | APPRD. |
| A         | PROPOSAL               | SEP 22/08 | A.G    |
| B         | UPDATED                | MAR 11/09 | A.G    |
| C         | ADD GENERAL TOLERANCES | JUN 06/11 | A.G    |

MATERIAL NOTES:  
 PLASTIC HOUSING:  
 HIGH TEMPERATURE LCP  
 FLAMMABILITY RATING UL94V-0.

CONTACTS:  
 PHOSPHOR BRONZE  
 PLATING OPTION 2:  
 30µ" [0.76 µm] MIN. GOLD ON MATING AREA AND 2 µ" (0.05 µm) GOLD FLASH  
 PLATING ON TERMINATION OVER 50µ"  
 [1.27 µm] MIN. NICKEL UNDER LAYER.  
 PLATING OPTION 3:  
 30µ" [0.76 µm] MIN. GOLD ON MATING AREA AND 150-300 µ" (3.81-7.62 µm) MIN. LOW WHISKER MATTE TIN PLATING ON TERMINATION OVER 50µ" [1.27 µm] MIN. NICKEL UNDER LAYER.  
 PLATING OPTION 5:  
 15µ" [0.38 µm] MIN. GOLD ON MATING AREA AND 2 µ" (0.05 µm) GOLD FLASH PLATING ON TERMINATION OVER 50µ"  
 [1.27 µm] MIN. NICKEL UNDER LAYER.  
 PLATING OPTION 6:  
 15µ" [0.38 µm] MIN. GOLD ON MATING AREA AND 150-300 µ" (3.81-7.62 µm) MIN. LOW WHISKER MATTE TIN PLATING ON TERMINATION OVER 50µ" [1.27 µm] MIN. NICKEL UNDER LAYER.

LUBRICANT OPTION: LUBRICANT CAN BE ADDED ON THE CONTACTS MATING AREA (SEE P/N FOR THE OPTION)

PACKAGING:  
 TAPE AND REEL.  
 TEMPERATURE RANGE:  
 -40°C TO +85°C



AMPHENOL PART NUMBER CONFIGURATION

UX76 - A 20 - X 0 0 X T  
 SFP RECEPTACLE \_\_\_\_\_ LUBRICANT OPTION  
 UE76 = ROHS COMPLIANT \_\_\_\_\_ ON MATING AREA  
 CONTACT PLATING \_\_\_\_\_  
 0 = NO  
 1 = YES

- 2 = PLATING OPTION 2 (SEE MATERIAL NOTES)
- 3 = PLATING OPTION 3 (SEE MATERIAL NOTES)
- 5 = PLATING OPTION 5 (SEE MATERIAL NOTES)
- 6 = PLATING OPTION 6 (SEE MATERIAL NOTES)

| GENERAL TOLERANCES |             |             |           |
|--------------------|-------------|-------------|-----------|
| INCH               | MILLIMETERS | ENG. APPRD. | DATE      |
| X.XX±0.014         | X.X± 0.35   | A.G         | SEP 22/08 |
| X.XXX±0.010        | X.XX± 0.25  | REF.        |           |
| X±.1*              |             |             |           |
| X°.X±0.5°          |             |             |           |

| DRAWN        | DATE           |
|--------------|----------------|
| Janez        | SEP 22/08      |
| DESIGNED     |                |
| CHECKED      | J.S/ SEP 22/08 |
| I. E. APPRD. |                |
| Q. A. APPRD. |                |

| TITLE  | DWG | DRWGING NO.      | REV. |
|--|-----|------------------|------|
| SFP+ 20 POSITION HIGH SPEED CONNECTOR RECEPTACLE FIXED BOARD, RIGHT ANGLE SMT OPTIONAL PLATING AND LUBRICANT ON MATING | A   | P-UX76-A20-X00XX | C    |

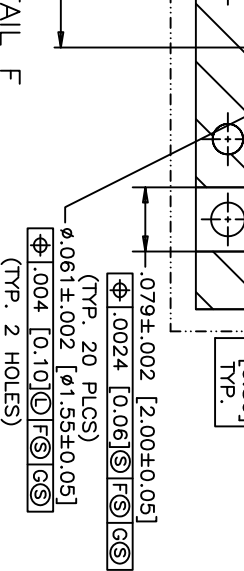
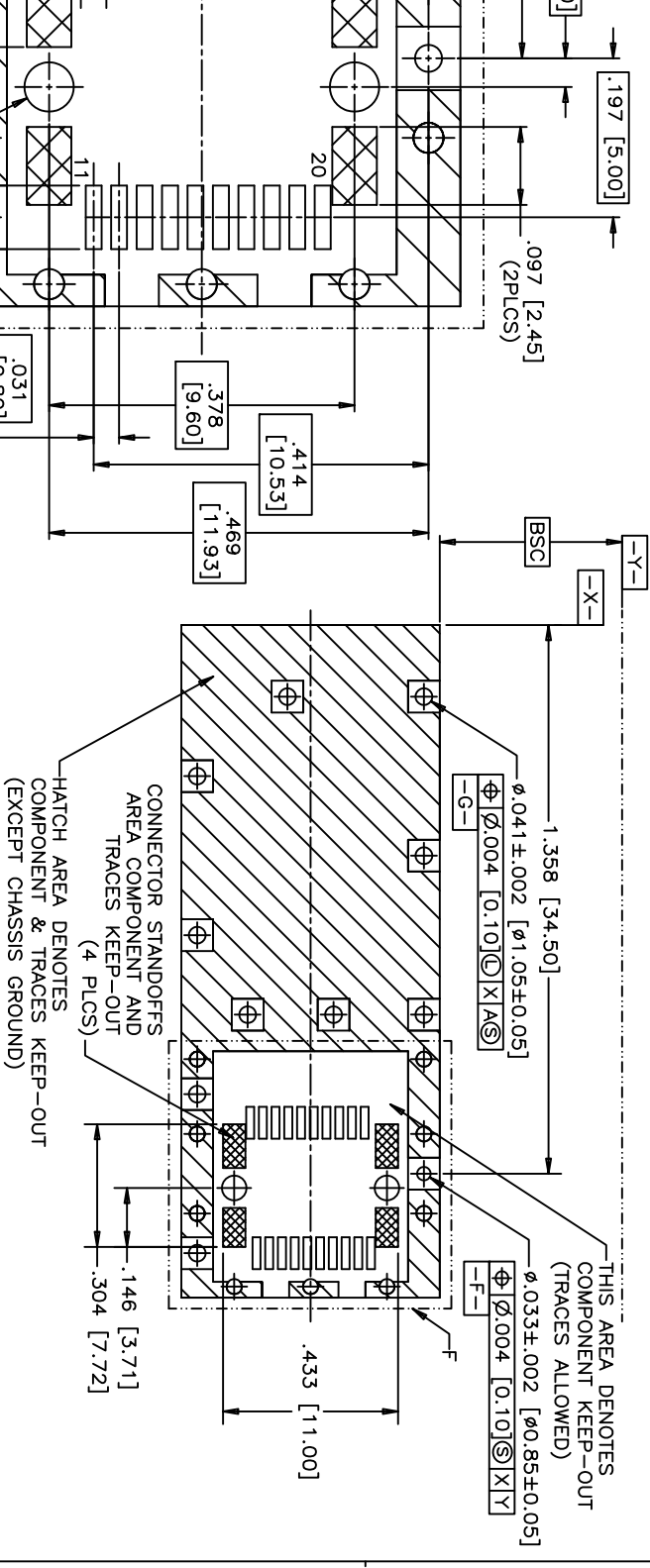
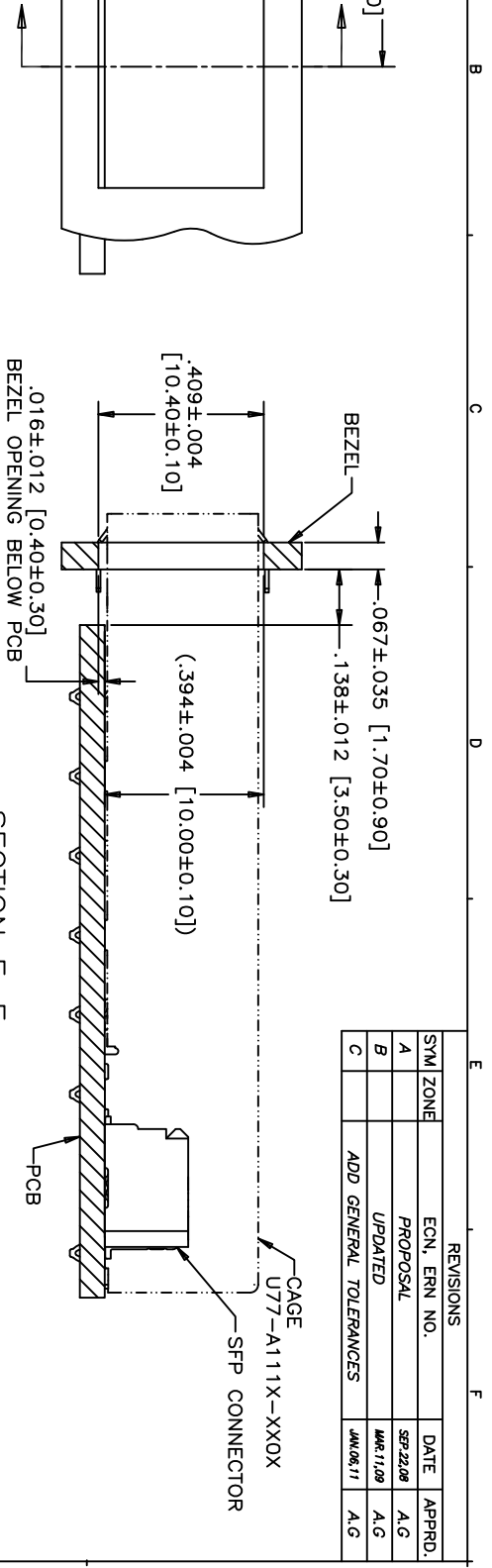
| DIMENSIONS ARE IN | CODE  | ID. NO. |
|-------------------|-------|---------|
| INCHES [mm]       | 03554 |         |

| SCALE | WT. | SURE. | SHEET | 1 OF |
|-------|-----|-------|-------|------|
| 4/1   |     |       | 1     | 3    |

FOR ANY PURPOSE OR USED FOR MANUFACTURING INFORMATION FROM AMPHENOL CANADA CORP.

| REVISIONS |                        |           |        |
|-----------|------------------------|-----------|--------|
| SYM. ZONE | ECON. ERN. NO.         | DATE      | APPRD. |
| A         | PROPOSAL               | SEP 22/08 | A.G    |
| B         | UPDATED                | MAR 11/09 | A.G    |
| C         | ADD GENERAL TOLERANCES | JUN 06/11 | A.G    |



| GENERAL TOLERANCES |             |               |          |
|--------------------|-------------|---------------|----------|
| INCH               | MILLIMETERS | DWG. APPRO.   | DATE     |
| X.XX±0.004         | X.X± 0.10   | ENG. REL. NO. | DESIGNED |
| X.XXX±0.002        | X.XX± 0.05  | REF.          | CHECKED  |
| X.X±1°             |             |               |          |
| X.X±0.5°           |             |               |          |

| TITLE |                  |       |     |
|-------|------------------|-------|-----|
| DWG   | DRAWING NO.      | SCALE | WT. |
| A     | P-UX76-A20-X00XX | 2/1   |     |

| Amphenol Canada Corp. |      |    |       |
|-----------------------|------|----|-------|
| REV.                  | DATE | BY | APPD. |
| C                     |      |    |       |
| B                     |      |    |       |
| A                     |      |    |       |

| DRAWN    |         |           |    |
|----------|---------|-----------|----|
| DESIGNED | CHECKED | DATE      | BY |
| Jaredz   | J.SI    | SEP 22/08 |    |

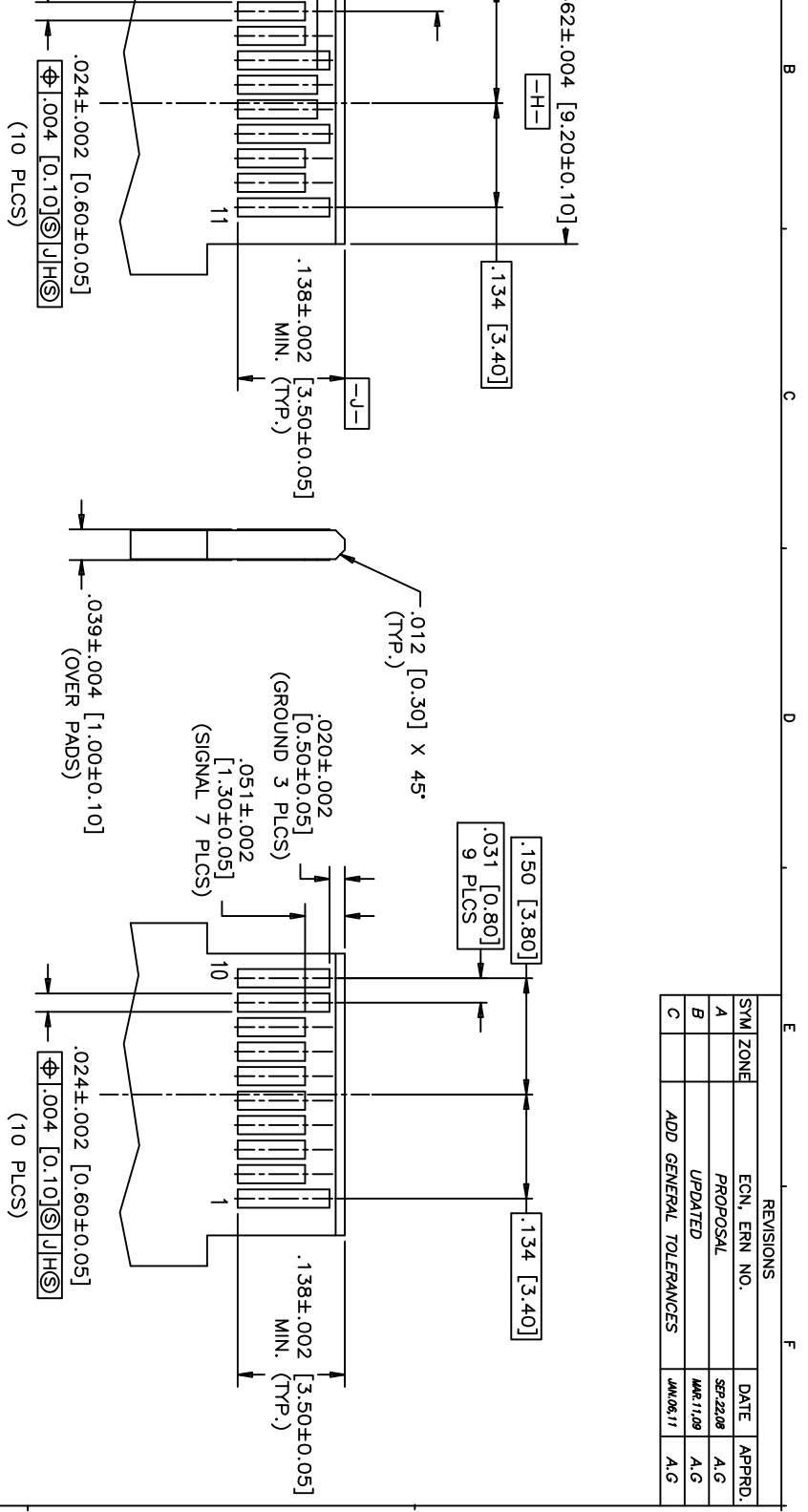
| DIMENSIONS ARE IN |          |                   |       |
|-------------------|----------|-------------------|-------|
| DECIMALS          | ANGLES   | DIMENSIONS ARE IN | SCALE |
| X.XX±0.004        | X.X±1°   | INCHES            | 2/1   |
| X.XXX±0.002       | X.X±0.5° | MILLIMETERS       |       |

ALL F

FOR ANY PURPOSE OR USED FOR MANUFACTURING INFORMATION FROM AMPHENOL CANADA CORP.

SHEET 2 OF 3

| REVISIONS |                        |           |        |
|-----------|------------------------|-----------|--------|
| STM ZONE  | EON. ERN NO.           | DATE      | APPRD. |
| A         | PROPOSAL               | SEP 22 08 | A.G    |
| B         | UPDATED                | MAR 11 09 | A.G    |
| C         | ADD GENERAL TOLERANCES | JUN 06 11 | A.G    |



RECOMMENDED LAYOUT DETAIL  
MATING TRANSCEIVER PCB

TOP VIEW OF BOARD

BOTTOM VIEW OF BOARD

FOR ANY PURPOSE OR USED FOR MANUFACTURING  
FROM AMPHENOL CANADA CORP.

| GENERAL TOLERANCES |           | DIMENSIONS ARE IN |      | CODE ID. NO. |     |
|--------------------|-----------|-------------------|------|--------------|-----|
| DECIMALS           | INCH      | MILLIMETERS       | IN   | INCHES       | WT. |
| X.XX±0.004         | X.X± 0.10 | X.X± 0.05         | REF. | 03554        |     |
| X.X±1*             |           |                   |      |              |     |
| ANGLES             | X.X±0.5°  |                   |      |              |     |

| DRAWN    | DATE      |
|----------|-----------|
| Janez    | SEP 22 08 |
| DESIGNED |           |
| J.S/     | SEP 22 08 |
| CHECKED  |           |
|          |           |

| TITLE   | DWG | SCALE | WT. | SURF. | SHEET | OF |
|---|-----|-------|-----|-------|-------|----|
| SFP + 20 POSITION HIGH SPEED CONNECTOR<br>RECEPTACLE FIXED BOARD, RIGHT ANGLE SMT<br>OPTIONAL PLATING AND LUBRICANT ON MATING | A   | 4:1   |     |       | 3     | 3  |

Amphenol Canada Corp.

## Looking for pricing, stock, or lifecycle information?

Click below to explore more details on WIN SOURCE:

 [View UE76-A20-3000T on WIN SOURCE](#)

 [Amphenol Information](#)

## Optimize Your Supply Chain with WIN SOURCE Solutions

-  Global Sourcing Solution
-  Obsolete Management
-  Cost Control Management
-  Shortage Management
-  Alternative Solution
-  Excess Inventory Management