



**THE DATASHEET OF
UE76-A20-2000T**



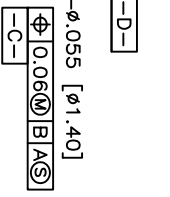
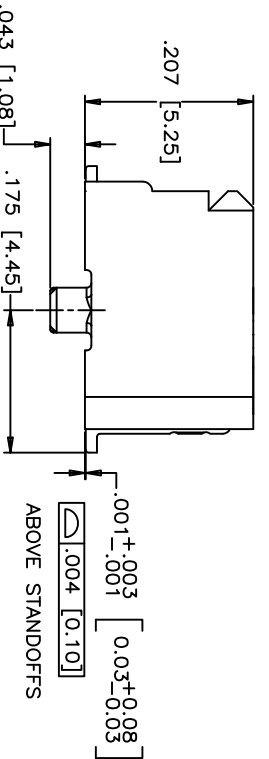
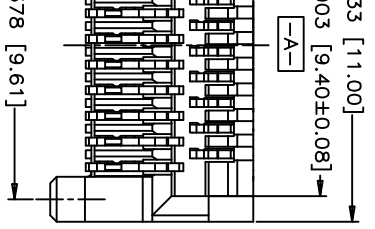
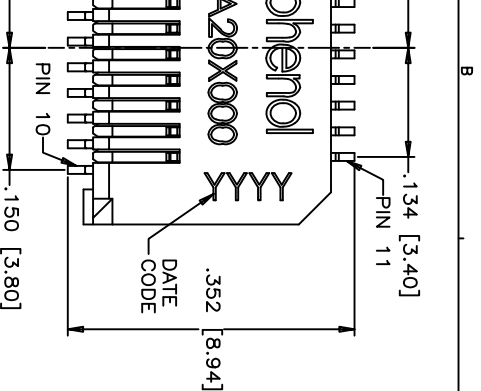
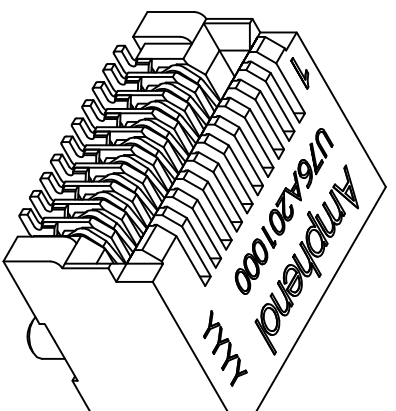
| REVISIONS | | | |
|-----------|------------------------|-----------|--------|
| STM ZONE | ECON. ERN NO. | DATE | APPRD. |
| A | PROPOSAL | SEP 22/08 | A.G |
| B | UPDATED | MAR 11/09 | A.G |
| C | ADD GENERAL TOLERANCES | JAN 06/11 | A.G |

MATERIAL NOTES:
 PLASTIC HOUSING:
 HIGH TEMPERATURE LCP
 FLAMMABILITY RATING UL94V-0.

CONTACTS:
 PHOSPHOR BRONZE
 PLATING OPTION 2:
 30µ" [0.76 µm] MIN. GOLD ON MATING AREA AND 2 µ" (0.05 µm) GOLD FLASH
 PLATING ON TERMINATION OVER 50µ"
 [1.27 µm] MIN. NICKEL UNDER LAYER.
 PLATING OPTION 3:
 30µ" [0.76 µm] MIN. GOLD ON MATING AREA AND 150-300 µ" (3.81-7.62 µm) MIN. LOW WHISKER MATTE TIN PLATING ON TERMINATION OVER 50µ" [1.27 µm] MIN. NICKEL UNDER LAYER.
 PLATING OPTION 5:
 15µ" [0.38 µm] MIN. GOLD ON MATING AREA AND 2 µ" (0.05 µm) GOLD FLASH PLATING ON TERMINATION OVER 50µ"
 [1.27 µm] MIN. NICKEL UNDER LAYER.
 PLATING OPTION 6:
 15µ" [0.38 µm] MIN. GOLD ON MATING AREA AND 150-300 µ" (3.81-7.62 µm) MIN. LOW WHISKER MATTE TIN PLATING ON TERMINATION OVER 50µ" [1.27 µm] MIN. NICKEL UNDER LAYER.

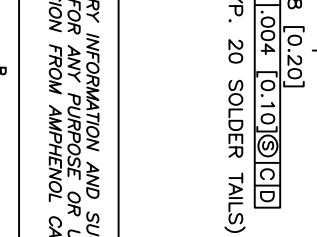
LUBRICANT OPTION: LUBRICANT CAN BE ADDED ON THE CONTACTS MATING AREA (SEE P/N FOR THE OPTION)

PACKAGING:
 TAPE AND REEL.
 TEMPERATURE RANGE:
 -40°C TO +85°C



AMPHENOL PART NUMBER CONFIGURATION

- UX76 - A 20 - X 0 0 X T
- SFP RECEPTACLE
 - UE76 = ROHS COMPLIANT
 - CONTACT PLATING
 - 2 = PLATING OPTION 2 (SEE MATERIAL NOTES)
 - 3 = PLATING OPTION 3 (SEE MATERIAL NOTES)
 - 5 = PLATING OPTION 5 (SEE MATERIAL NOTES)
 - 6 = PLATING OPTION 6 (SEE MATERIAL NOTES)
- LUBRICANT OPTION ON MATING AREA
 0 = NO
 1 = YES



| GENERAL TOLERANCES | | | |
|--------------------|------------|-------------|-------------|
| DECIMALS | INCH | MILLIMETERS | ENG. APPRD. |
| X.XX±0.014 | X.X± 0.35 | X.X± 0.25 | |
| X.XXX±0.010 | X.XX± 0.25 | | |
| X.X±.1 | | | |
| X.X±0.5 | | | |

| DRAWN | DATE |
|---------------|----------------|
| JaneZ | SEP 22/08 |
| DESIGNED | |
| CHECKED | J/S/ SEP 22/08 |
| I. E. APPRD. | |
| D. A. APPRD. | |
| ENG. REL. NO. | A.G SEP 22/08 |

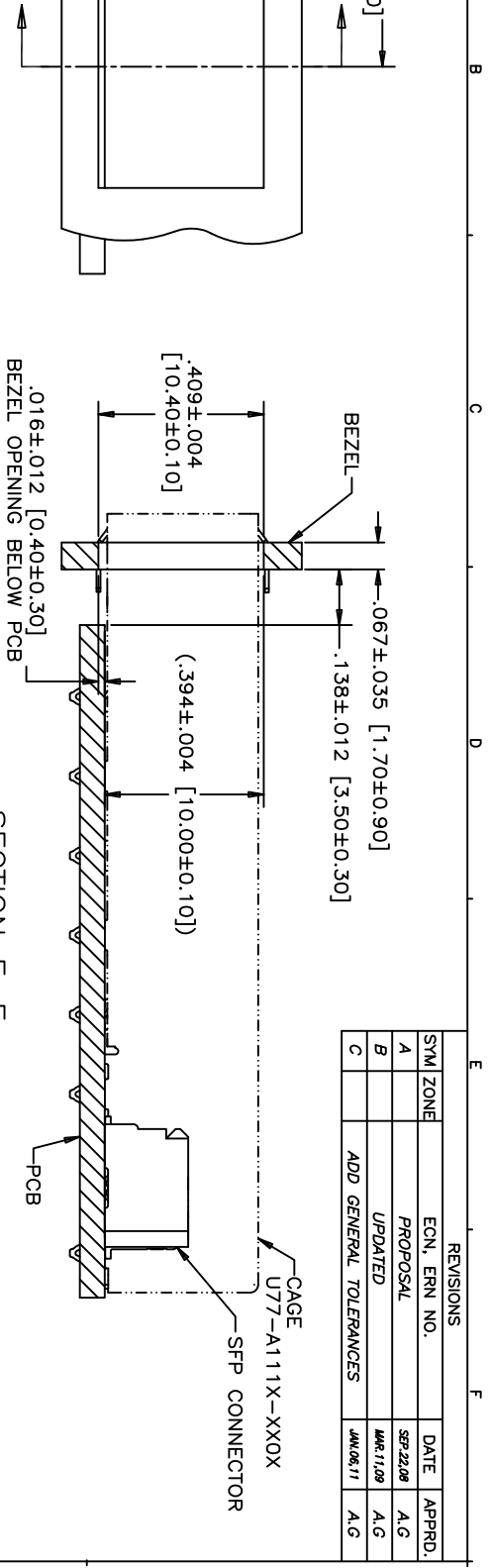
| TITLE | DWG | DRWGING NO. | REV. |
|--|-----|------------------|------|
| SFP+ 20 POSITION HIGH SPEED CONNECTOR RECEPTACLE FIXED BOARD, RIGHT ANGLE SMT OPTIONAL PLATING AND LUBRICANT ON MATING | A | P-UX76-A20-X00XX | C |

| DIMENSIONS ARE IN | CODE | ID. NO. |
|-------------------|-------|---------|
| INCHES [mm] | 03554 | |

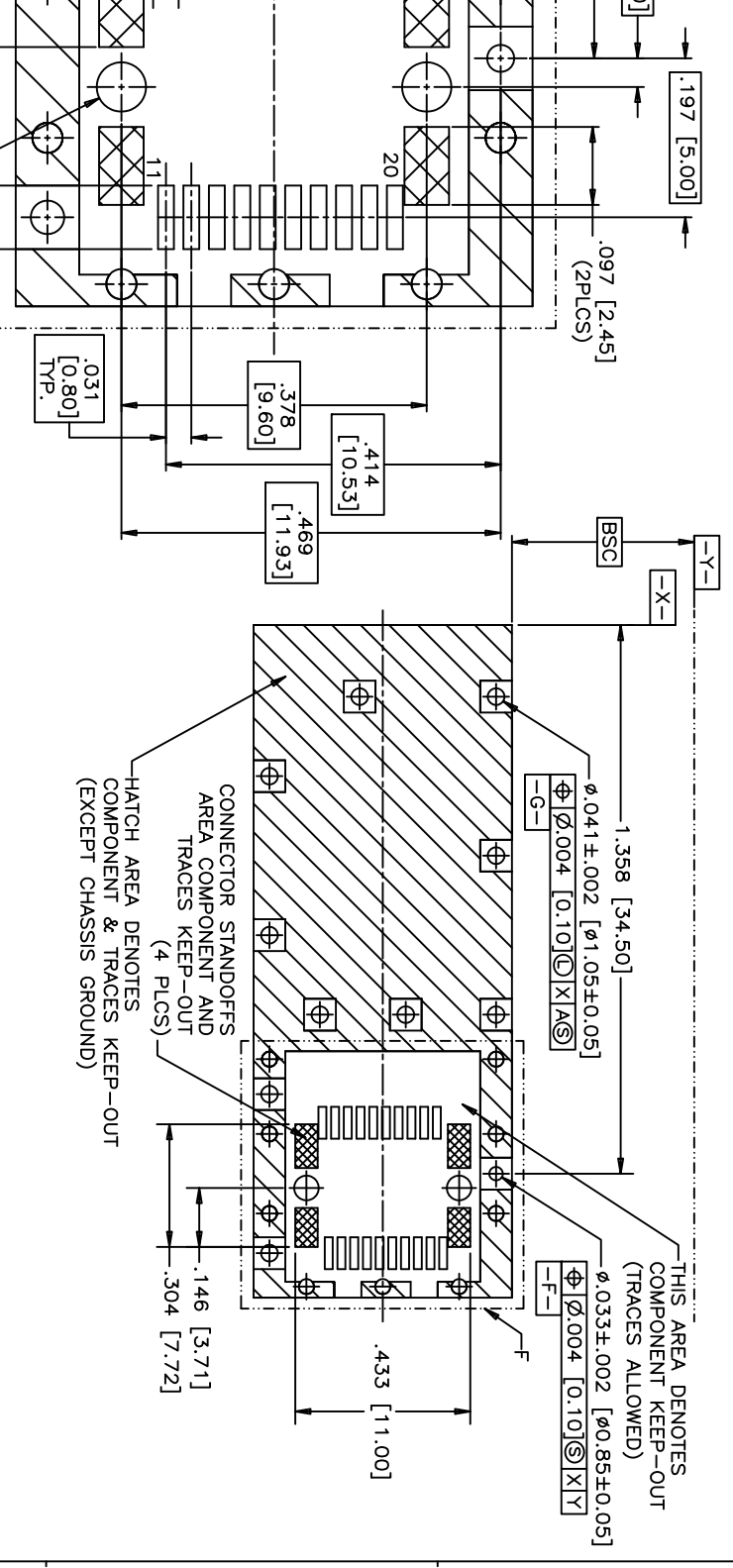
| SCALE | WT. | SURE. | SHEET | 1 OF |
|-------|-----|-------|-------|------|
| 4/1 | | | 3 | 3 |

FOR ANY PURPOSE OR USED FOR MANUFACTURING INFORMATION FROM AMPHENOL CANADA CORP.

Amphenol Canada Corp.



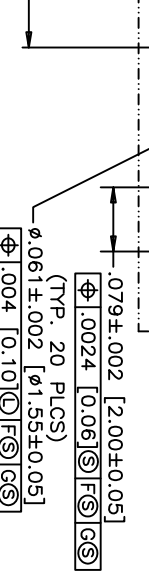
| REVISIONS | | | |
|-----------|------------------------|-----------|--------|
| SYM. ZONE | EON. ERN. NO. | DATE | APPRD. |
| A | PROPOSAL | SEP 22/08 | A.G |
| B | UPDATED | MAR 11/09 | A.G |
| C | ADD GENERAL TOLERANCES | JUN 06/11 | A.G |



THIS AREA DENOTES COMPONENT KEEP-OUT (TRACES ALLOWED)

CONNECTOR STANDOFFS AREA COMPONENT AND TRACES KEEP-OUT (4 PLCS)

HATCH AREA DENOTES COMPONENT & TRACES KEEP-OUT (EXCEPT CHASSIS GROUND)



| GENERAL TOLERANCES | | | |
|--------------------|-------------|-------------|-----------------|
| INCH | MILLIMETERS | DWG. APPRO. | DATE |
| X.XX±0.004 | X.X± 0.10 | DESIGNED | Jarež SEP 22/08 |
| X.XXX±0.002 | X.XX± 0.05 | CHECKED | J.SI/ SEP 22/08 |
| X±.1 | | DWG. APPRO. | A.G SEP 22/08 |
| X.X±0.5 | | REF. | |

| DIMENSIONS ARE IN | | | |
|-------------------|------------|-------------|-----------------|
| DECIMALS | FRACTIONS | INCHES | MILLIMETERS |
| X.XX±0.004 | X.XX± 0.10 | DESIGNED | Jarež SEP 22/08 |
| X.XXX±0.002 | X.XX± 0.05 | CHECKED | J.SI/ SEP 22/08 |
| X±.1 | | DWG. APPRO. | A.G SEP 22/08 |
| X.X±0.5 | | REF. | |

| TITLE | | | |
|-------|------------------|-------|-----|
| DWG | DRAWING NO. | SCALE | WT. |
| A | P-UX76-A20-X00XX | 2/1 | |

| Amphenol Canada Corp. | | | |
|-----------------------|------|----|-------|
| REV. | DATE | BY | APPD. |
| C | | | |

ALL F

FOR ANY PURPOSE OR USED FOR MANUFACTURING INFORMATION FROM AMPHENOL CANADA CORP.

Looking for pricing, stock, or lifecycle information?

Click below to explore more details on WIN SOURCE:

 [View UE76-A20-2000T on WIN SOURCE](#)

 [Amphenol Information](#)

Optimize Your Supply Chain with WIN SOURCE Solutions

-  Global Sourcing Solution
-  Obsolete Management
-  Cost Control Management
-  Shortage Management
-  Alternative Solution
-  Excess Inventory Management