



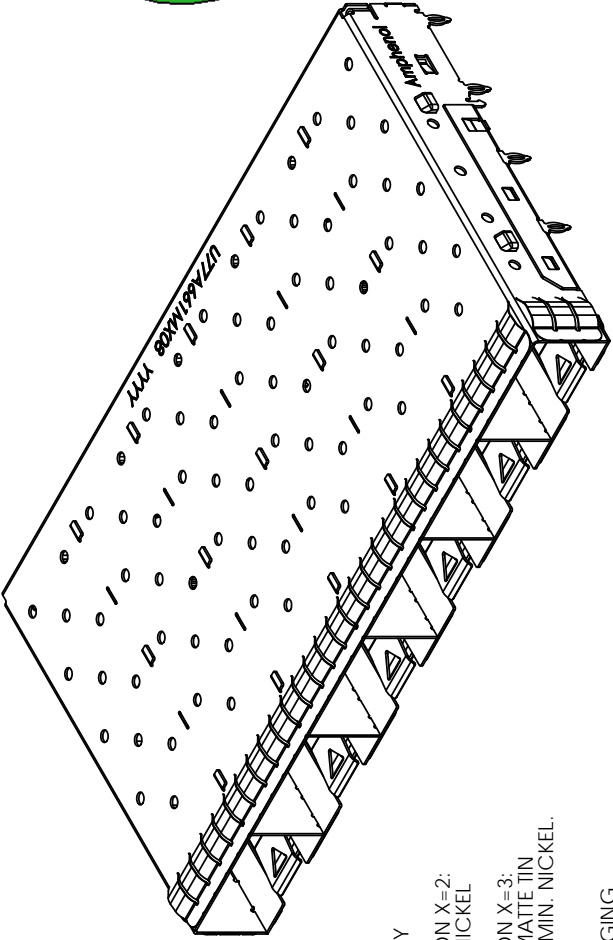
**THE DATASHEET OF
U77-A461M-2081**



REV.	COMMENTS
A	
B	
C	

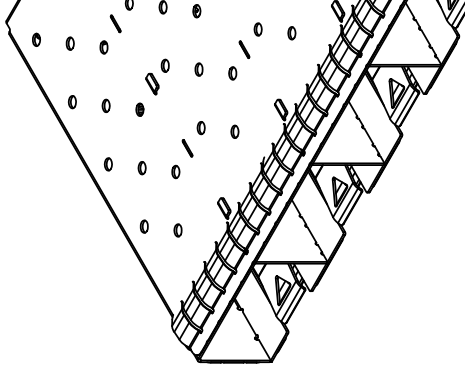


3
4
5
6
7
8

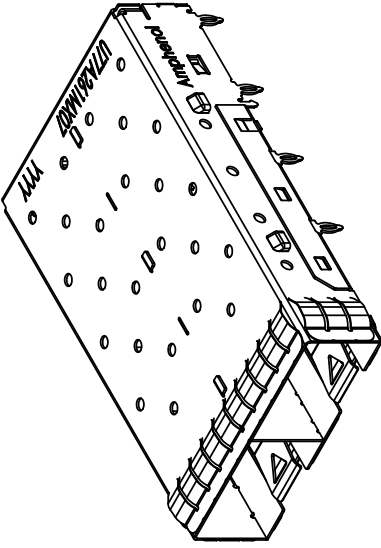


P/N: U77-A661M-X081 SHOWN

MATERIAL:
 CAGE:
 COPPER ALLOY
 PLATING OPTION X=2:
 2.54um MIN. NICKEL
 PLATING OPTION X=3:
 3.81um MIN. MATTE TIN
 OVER 1.27um MIN. NICKEL.
 PACKAGING:
 TRAY PACKAGING
 TEMPERATURE RANGE:
 -40°C TO +85°C



P/N: U77-A46



P/N: U77-A261M-X081 SHOWN

AMPHENOL PART NUMBER CONFIGURATION
 U77 - A X 6 1 M - X 0 8 1

PACKAGING
 1 = TRAY PACKAGING

PLATING
 2 = NICKEL PLATING
 3 = MATTE TIN PLATING

NUMBER OF PORTS
 2 = 2 PORTS
 4 = 4 PORTS
 6 = 6 PORTS

DO NOT SCALE DRAWING

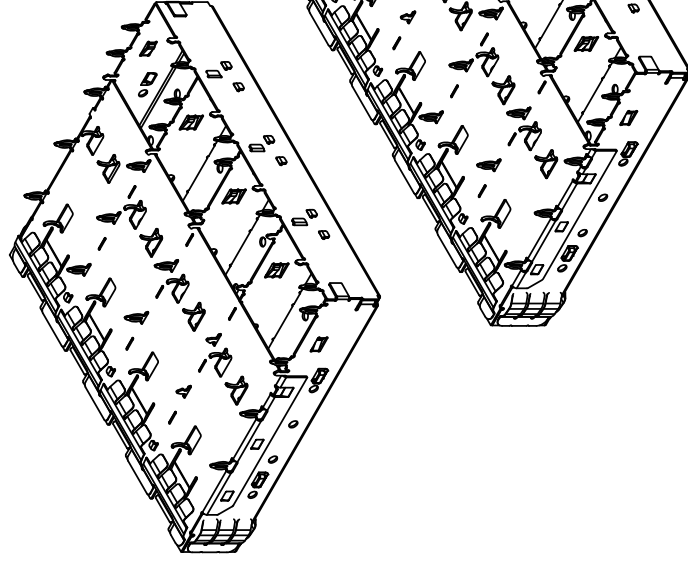
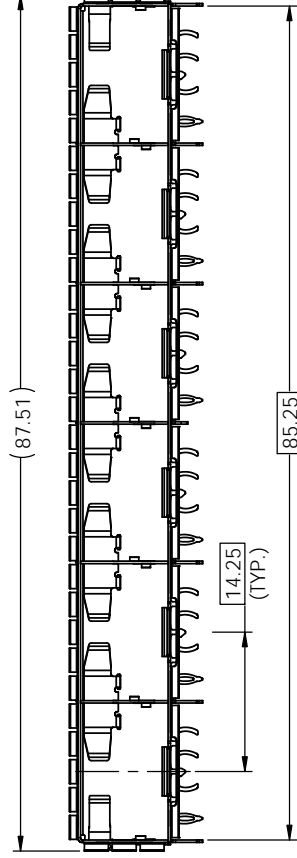
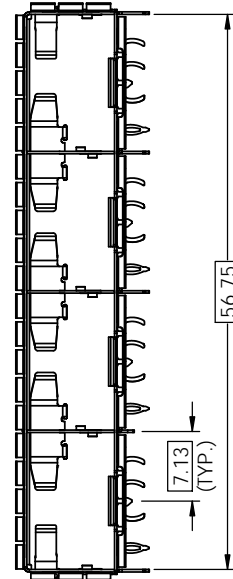
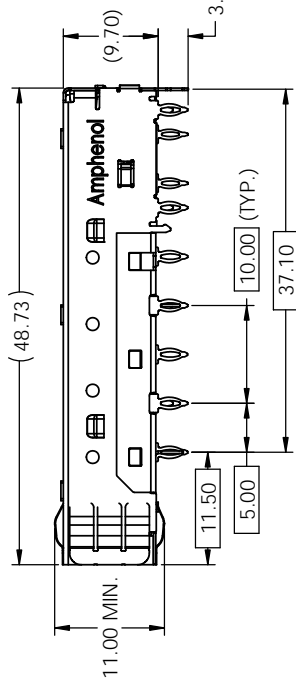
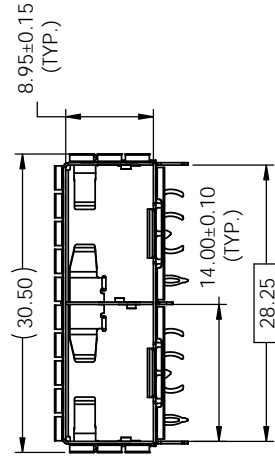
THIS DOCUMENT CONTAINS PROPRIETARY INFORMATION AND SUCH INFORMATION MAY NOT BE DISCLOSED TO OTHERS FOR ANY PURPOSE OR USED FOR MANUFACTURING PURPOSES WITHOUT PERMISSION FROM AMPHENOL CANADA CORP.

UNLESS OTHERWISE SPECIFIED, DIMENSIONS ARE IN MILLIMETERS	APPROVALS
TOLERANCES ARE:	DRAWN: Chigov
XX ± 0.38	DESIGNED:
XXX ± 0.25	CHECKED:
MATERIAL AND FINISH	QA APPD:
REF	EWAPPD:
SEE NOTE 1	DWG APPD:
SCORE IDENT NO: 03554	

3
4
5
6
7
8

3
4
5
6
7
8

REV.	COMMENTS
A	
B	
C	



U77-A661M-X081

UNLESS OTHERWISE SPECIFIED, DIMENSIONS ARE IN MILLIMETERS	
TOLERANCES ARE:	
XXX ± 0.38	ANGLES ± 1°
XXX ± 0.25	
MATERIAL AND FINISH	
REF. SEE NOTE 1	
SCORE IDENT. NO. 03554	

APPROVALS	DRAWN	CHINGJOU
	DESIGNED	
	CHECKED	
	QA APPD	
	EMPPD	
	DWG APPD	

DO NOT SCALE DRAWING

THIS DOCUMENT CONTAINS PROPRIETARY INFORMATION AND SUCH INFORMATION MAY NOT BE DISCLOSED TO OTHERS FOR ANY PURPOSE OR USED FOR MANUFACTURING PURPOSES WITHOUT PERMISSION FROM AMPHENOL CANADA CORP.

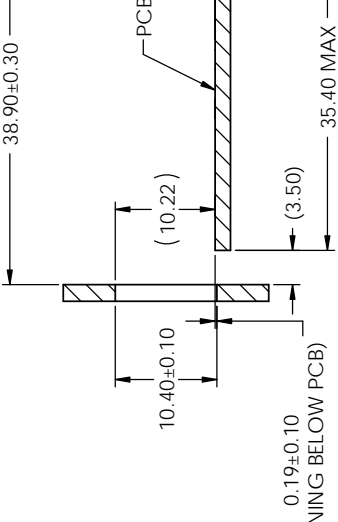
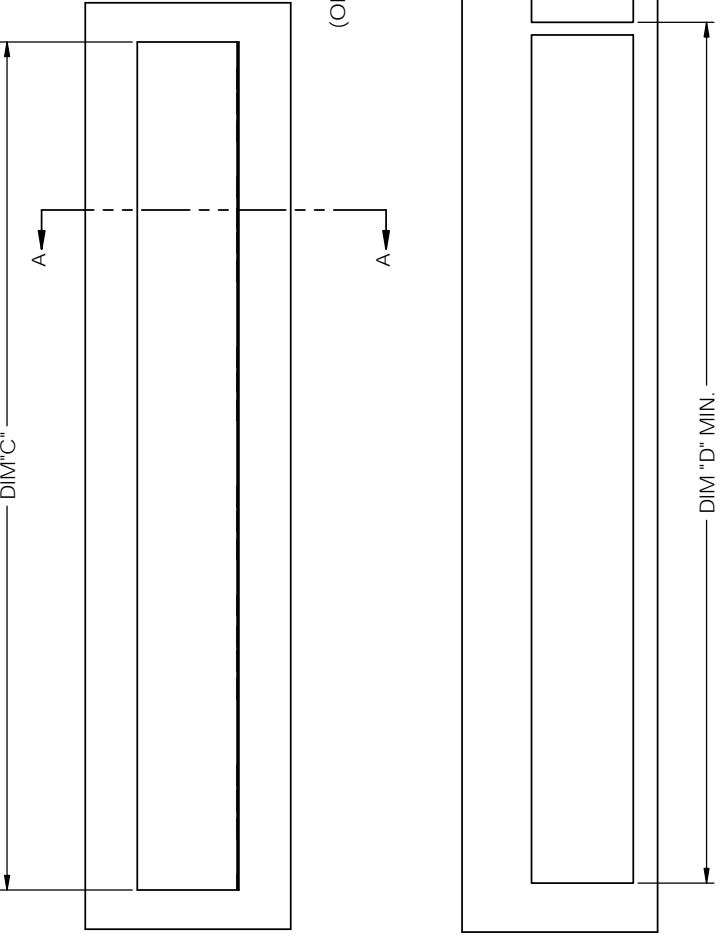
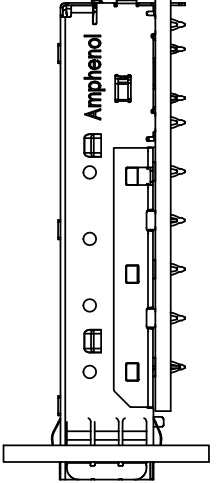
3
4
5
6
7
8

A

3 4 5 6 7 8

REV.	EDMELR
A	
B	
C	

PART NUMBER	DIM "C"	DIM "D"
U77-A261M-X081	29.70	31.00
U77-A461M-X081	58.20	59.50
U77-A661M-X081	86.70	88.00



DO NOT SCALE DRAWING

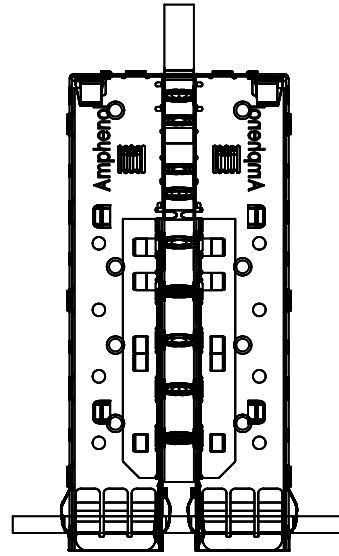
THIS DOCUMENT CONTAINS PROPRIETARY INFORMATION AND SUCH INFORMATION MAY NOT BE DISCLOSED TO OTHERS FOR ANY PURPOSE OR USED FOR MANUFACTURING PURPOSES WITHOUT PERMISSION FROM AMPHENOL CANADA CORP.

UNLESS OTHERWISE SPECIFIED, DIMENSIONS ARE IN MILLIMETERS	APPROVALS
TOLERANCES ARE:	DRAWN Chigiov
XX ± 0.38	DESIGNED
XXX ± 0.25	CHECKED
MATERIAL AND FINISH	QA APPD
REF	EWAPPD
SCORE IDENT NO	DWG APPD
	03554

3 4 5 6 7 8

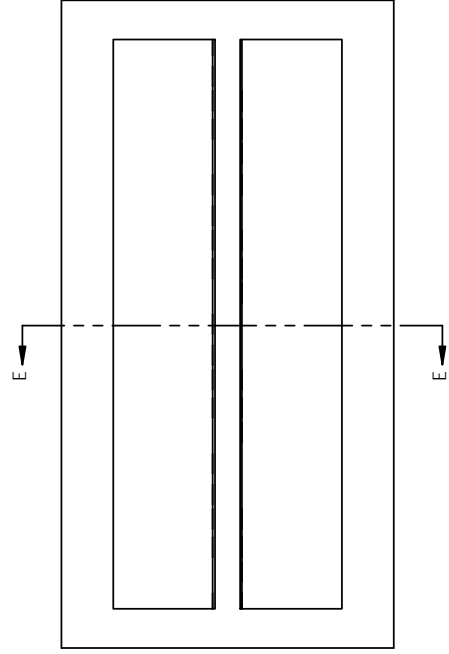
3 4 5 6 7 8

REV.	COMMENTS
A	
B	
C	



NOTE:

PANEL CUTOUT SIZES PER SFF 8433 SPEC. FOR BELLY TO BELLY MOUNTING, DIM "E" (PCB THICKNESS) IS 3.0 mm MIN. DIM "F" RELATED TO DIM "E". FOR DIM "F" = DIM "E" - 0.44 mm. THE PANEL CUTOUT 10.40 mm MIGHT BE INCREASED UP TO 10.80 mm IN ORDER TO ACCOMMODATE PCB TOLERANCING



SECTION E-E
SCALE 2:1

DO NOT SCALE DRAWING

THIS DOCUMENT CONTAINS PROPRIETARY INFORMATION AND SUCH INFORMATION MAY NOT BE DISCLOSED TO OTHERS FOR ANY PURPOSE OR USED FOR MANUFACTURING PURPOSES WITHOUT PERMISSION FROM AMPHENOL CANADA CORP.

UNLESS OTHERWISE SPECIFIED, DIMENSIONS ARE IN MILLIMETERS TOLERANCES ARE:	DRAWN	CHINGJOU
	DESIGNED	
	CHECKED	
	DATE	
	ANGLES	± 1°
	X ± 0.38	
	XXX ± 0.25	
	MATERIAL AND FINISH	SEE NOTE 1
	REF.	
	DOCUMENT NO.	03554

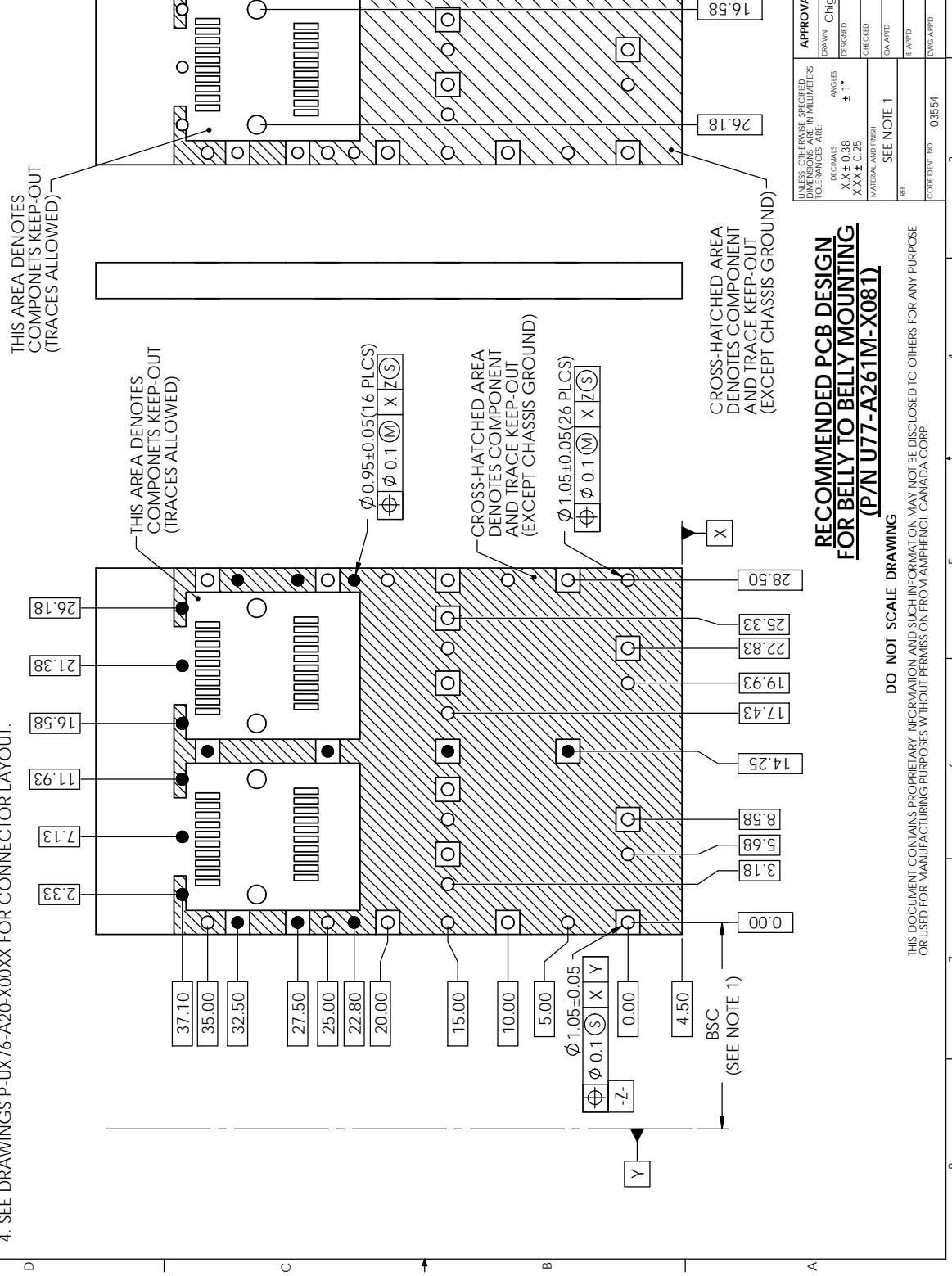
3 4 5 6 7 8

3 4 5 6 7 8

D C B A

NOTES:

1. DATUM AND BASIC DIMENSIONS ESTABLISHED BY CUSTOMER.
2. PADS AND VIAS ARE CHASSIS GROUND.
3. THRU-HOLES, PLATING OPTIONAL.
4. SEE DRAWINGS P-UX76-A20-X00XX FOR CONNECTOR LAYOUT.



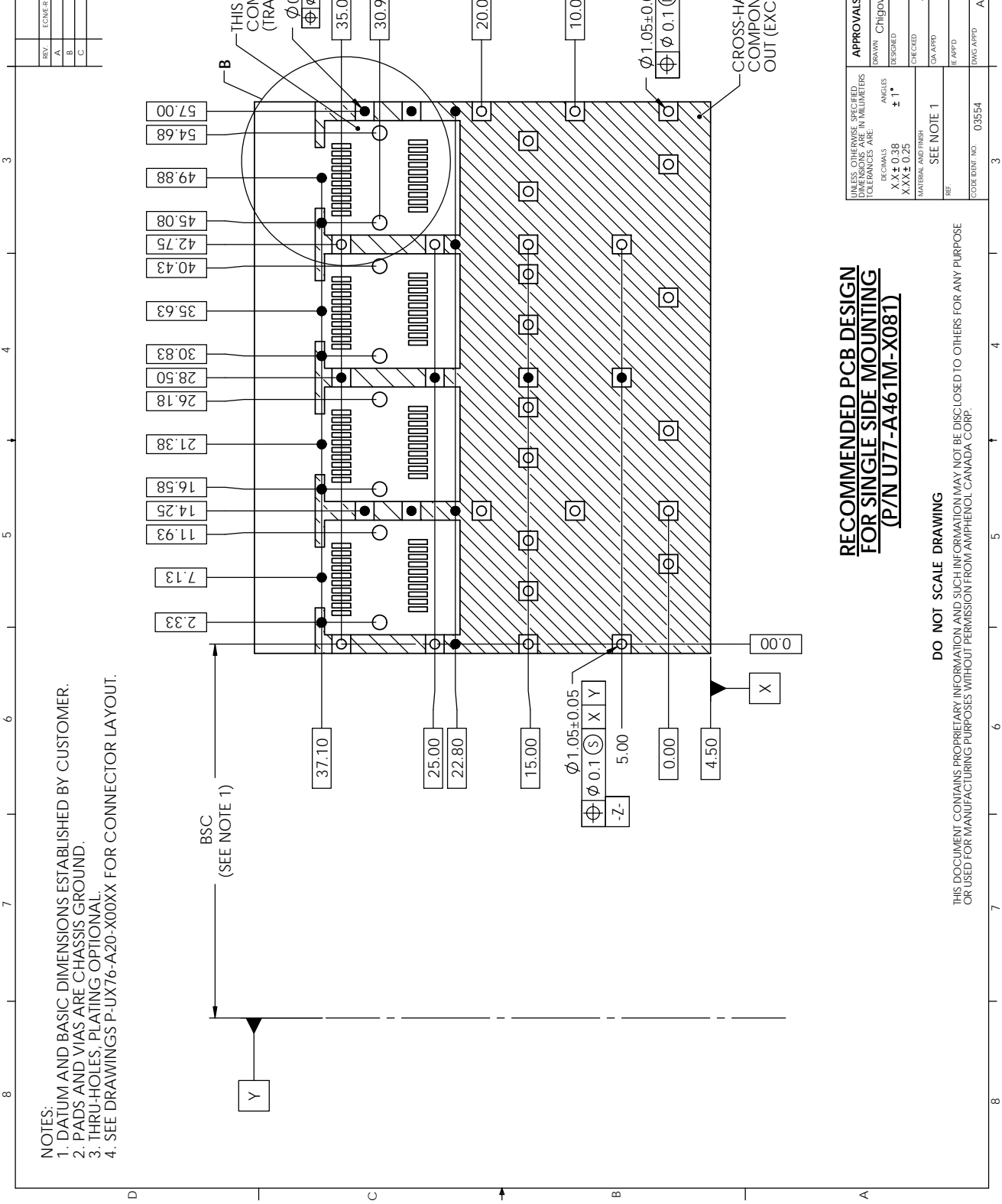
RECOMMENDED PCB DESIGN FOR BELLY TO BELLY MOUNTING (P/N U77-A261M-X081)

DO NOT SCALE DRAWING

THIS DOCUMENT CONTAINS PROPRIETARY INFORMATION AND SUCH INFORMATION MAY NOT BE DISCLOSED TO OTHERS FOR ANY PURPOSE OR USED FOR MANUFACTURING PURPOSES WITHOUT PERMISSION FROM AMPHENOL CANADA CORP.

UNLESS OTHERWISE SPECIFIED, DIMENSIONS ARE IN MILLIMETERS	APPROVALS
TOLERANCES ARE:	DRAWN: Chigov
ANGLES ± 1°	DESIGNED:
XX ± 0.38	CHECKED:
XXX ± 0.25	QA APPD:
MATERIAL AND FINISH	STAMPD:
REF: SEE NOTE 1	DWG APPD:
SCORE IDENT NO: 03554	

REV	COMMENTS
A	
B	
C	



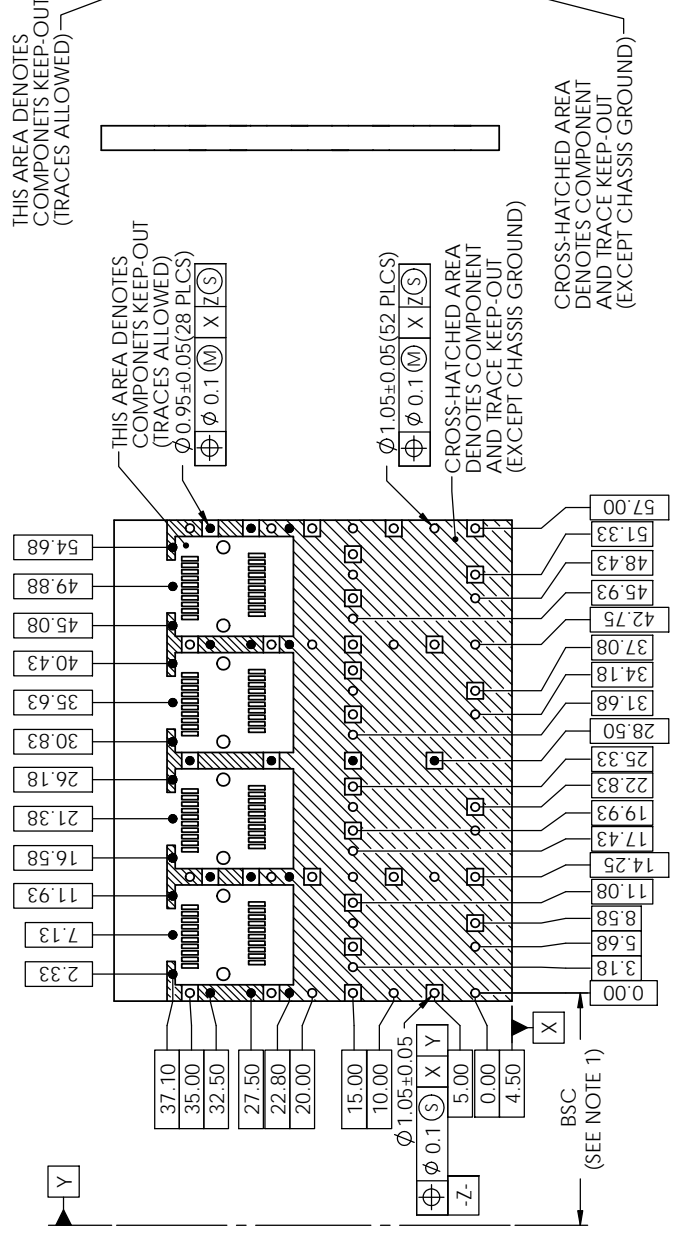
NOTES:

1. DATUM AND BASIC DIMENSIONS ESTABLISHED BY CUSTOMER.
2. PADS AND VIAS ARE CHASSIS GROUND.
3. THRU-HOLES, PLATING OPTIONAL.
4. SEE DRAWINGS P-UX76-A20-X00XX FOR CONNECTOR LAYOUT.

8 7 6 5 4 3

NOTES:

1. DATUM AND BASIC DIMENSIONS ESTABLISHED BY CUSTOMER.
2. PADS AND VIAS ARE CHASSIS GROUND.
3. THRU-HOLES, PLATING OPTIONAL.
4. SEE DRAWINGS P-UX76-A20-X00XX FOR CONNECTOR LAYOUT.



**RECOMMENDED PCB DESIGN
FOR BELLY TO BELLY MOUNTING
(P/N U77-A461M-X081)**

DO NOT SCALE DRAWING

THIS DOCUMENT CONTAINS PROPRIETARY INFORMATION AND SUCH INFORMATION MAY NOT BE DISCLOSED TO OTHERS FOR ANY PURPOSE OR USED FOR MANUFACTURING PURPOSES WITHOUT PERMISSION FROM AMPHENOL CANADA CORP.

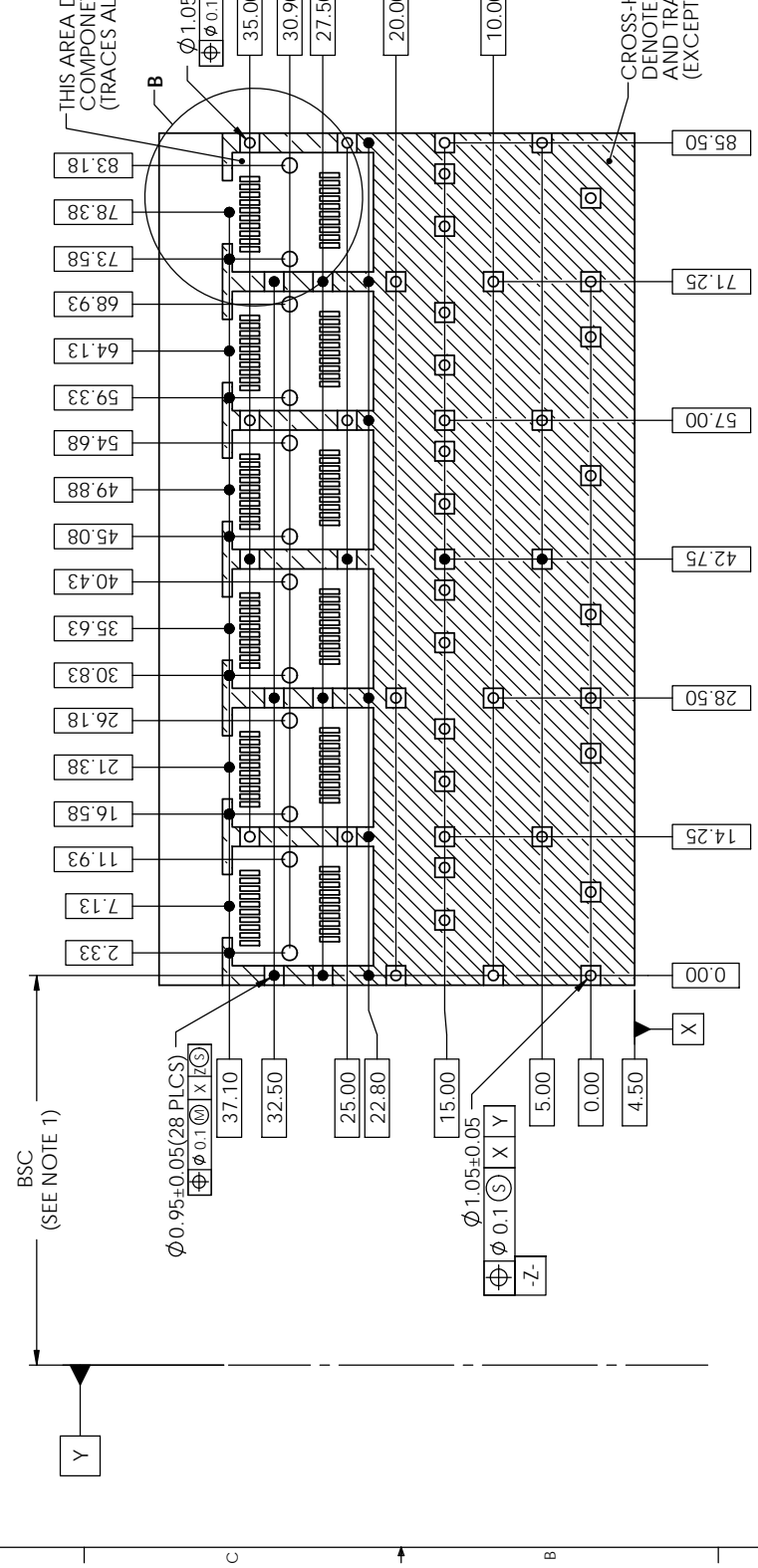
UNLESS OTHERWISE SPECIFIED, DIMENSIONS ARE IN MILLIMETERS	APPROVALS
TOLERANCES ARE:	DRAWN Chiglov
XXX ± 0.25	DESIGNED
XX ± 0.38	CHECKED
X ± 0.76	QA APPD
ANGLES ± 1°	EWAPPD
MATERIAL AND FINISH	DWG APPD
REF SEE NOTE 1	SCORE IDENT NO 03554

REV	COMMENTS
A	
B	
C	

3 4 5 6 7 8

REV.	COMMENTS
A	
B	
C	

- NOTES:
 1. DATUM AND BASIC DIMENSIONS ESTABLISHED BY CUSTOMER.
 2. PADS AND VIAS ARE CHASSIS GROUND.
 3. THRU-HOLES, PLATING OPTIONAL.
 4. SEE DRAWINGS P-UX76-A20-X00XX FOR CONNECTOR LAYOUT.



**RECOMMENDED PCB DESIGN
 FOR SINGLE SIDE MOUNTING
 (P/N U77-A661M-X081)**

DO NOT SCALE DRAWING
 THIS DOCUMENT CONTAINS PROPRIETARY INFORMATION AND SUCH INFORMATION MAY NOT BE DISCLOSED TO OTHERS FOR ANY PURPOSE
 OR USED FOR MANUFACTURING PURPOSES WITHOUT PERMISSION FROM AMPHENOL CANADA CORP.

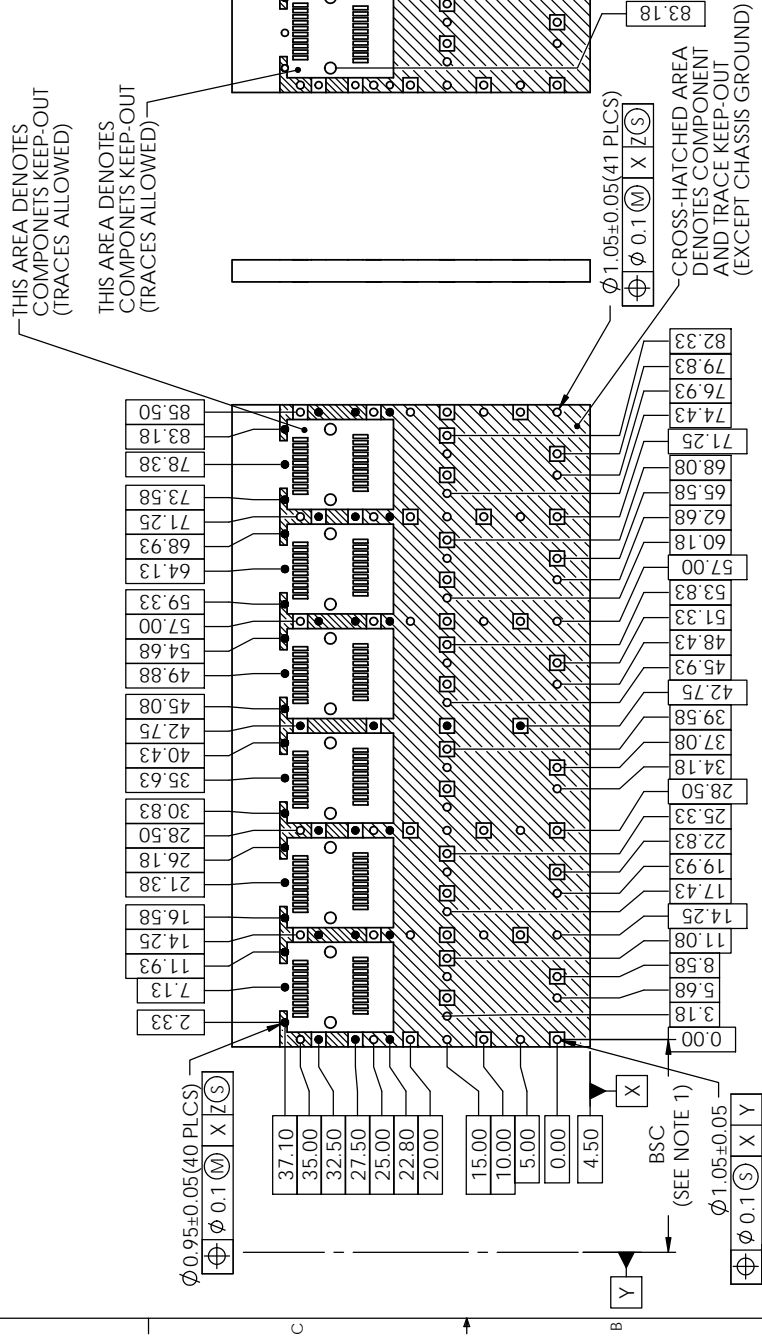
UNLESS OTHERWISE SPECIFIED, DIMENSIONS ARE IN MILLIMETERS TOLERANCES ARE:	APPROVALS	DRAWN	CHKD/APPD
	DESIGNED	CHECKED	DATE
	MATERIAL AND FINISH	REF	SCORE IDENT NO
ANGLES XX ± 0.38 XXX ± 0.25	SEE NOTE 1	03554	

3 4 5 6 7 8

8 7 6 5 4 3

NOTES:

1. DATUM AND BASIC DIMENSIONS ESTABLISHED BY CUSTOMER.
2. PADS AND VIAS ARE CHASSIS GROUND.
3. THRU-HOLES, PLATING OPTIONAL.
4. SEE DRAWINGS P-UX76-A20-X00XX FOR CONNECTOR LAYOUT.



**RECOMMENDED PCB DESIGN
FOR BELLY TO BELLY MOUNTING
(P/N U77-A661M-X081)**

DO NOT SCALE DRAWING

THIS DOCUMENT CONTAINS PROPRIETARY INFORMATION AND SUCH INFORMATION MAY NOT BE DISCLOSED TO OTHERS FOR ANY PURPOSE OR USED FOR MANUFACTURING PURPOSES WITHOUT PERMISSION FROM AMPHENOL CANADA CORP.

APPROVALS		DRAWN	Chingjov
UNLESS OTHERWISE SPECIFIED, DIMENSIONS ARE IN MILLIMETERS TOLERANCES ARE:		DESIGNED	
ANGLES		CHECKED	
XXX ± 0.38		QA APPD	
XXX ± 0.25		EMPPD	
MATERIAL AND FINISH		SCORE IDENT NO	03554
SEE NOTE 1		REF	

REV	COMMENTS
A	
B	
C	

Looking for pricing, stock, or lifecycle information?

Click below to explore more details on WIN SOURCE:

 [View U77-A461M-2081 on WIN SOURCE](#)

 [Amphenol Information](#)

Optimize Your Supply Chain with WIN SOURCE Solutions

-  Global Sourcing Solution
-  Obsolete Management
-  Cost Control Management
-  Shortage Management
-  Alternative Solution
-  Excess Inventory Management