



**THE DATASHEET OF
ARF6-16-S-RA-TR**



ACCELERATE®

(0.635 mm) .025"

ARF6-08-S-RA-TR



ARF6-16-S-RA-TR



ARF6-RA SERIES

RUGGED RIGHT-ANGLE SLIM SOCKET

SPECIFICATIONS

For complete specifications see www.samtec.com?ARF6-RA

Insulator Material:

LCP, Black

Contact Material:

Copper Alloy

Shield Material:

Phosphor Bronze

Plating:

Au or Sn over

50 μ" (1.27 μm) Ni

Operating Temp Range:

-40 °C to +125 °C

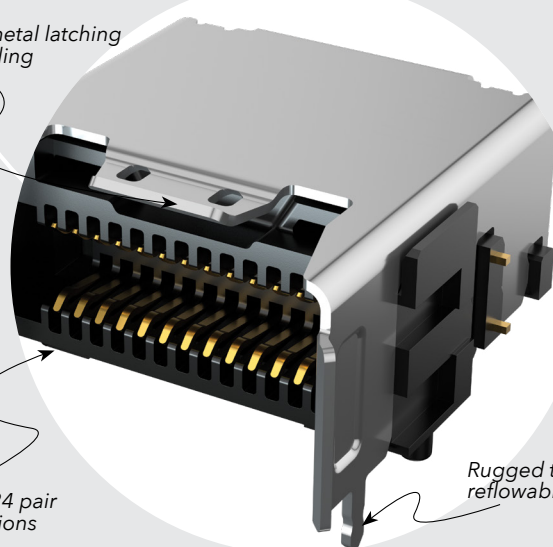
Mates with:
ARC6

PAM4	NRZ
64 Gbps	32 Gbps

Rugged metal latching and shielding

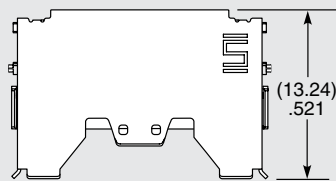
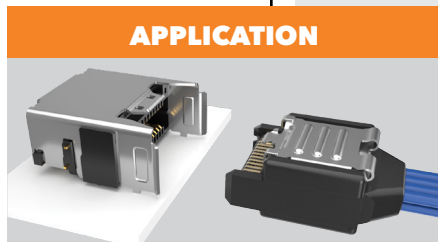
8, 16 and 24 pair configurations

Rugged through-hole reflowable weld tabs

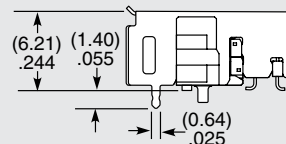
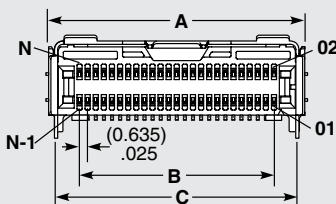


ARF6	NO. OF PAIRS	PLATING	RA	"X"R
	-08 = 8 Pairs -16 = 16 Pairs -24 = 24 Pairs	-S = 30 μ" (0.76 μm) Gold on contact area, Matte Tin on tail		-TR = Tape & Reel -FR = Full Reel Tape & Reel (must order max. quantity per reel; contact Samtec for quantity breaks)

APPLICATION



NO. OF PAIRS	A	B	C	N	N-1
-08	(12.46) .491	(7.62) .300	(11.30) .445	26	25
-16	(20.08) .791	(15.24) .600	(18.92) .745	50	49
-24	(27.70) 1.091	(22.86) .900	(26.54) 1.045	74	73



ARF6-16-X-RA SHOWN

Notes:
Tape & Reel packaging is standard.

Some sizes, styles and options are non-standard, non-returnable.

Looking for pricing, stock, or lifecycle information?

Click below to explore more details on WIN SOURCE:

 [View ARF6-16-S-RA-TR on WIN SOURCE](#)

 [Samtec Inc. Information](#)

Optimize Your Supply Chain with WIN SOURCE Solutions

-  Global Sourcing Solution
-  Obsolete Management
-  Cost Control Management
-  Shortage Management
-  Alternative Solution
-  Excess Inventory Management