



**THE DATASHEET OF**  
**2170112-2**



2170112-2 ✓ ACTIVE

QSFP/QSFP+

TE Internal #: 2170112-2

QSFP+, Cage Assembly, Signal, Operating Temperature Range -55 – 105 °C [-67 – 221 °F], Data Rate (Max) 14 Gb/s, 1 Ports

[View on TE.com >](#)



Connectors > Pluggable IO Connectors & Cages



Pluggable I/O Product Type: **Cage Assembly**

Sealable: **No**

Circuit Application: **Signal**

Operating Temperature Range: **-55 – 105 °C [-67 – 221 °F]**

Data Rate (Max): **14 Gb/s**

## Features

### Product Type Features

Thermal Accessory Type Included	Heat Sink
Cage Type	Single
Pluggable I/O Product Type	Cage Assembly
Sealable	No
Form Factor	QSFP+

### Configuration Features

Number of Rear EONs per Port Column	2
Number of Ports	1
Port Matrix Configuration	1 x 1

### Electrical Characteristics

Data Rate (Max)	14 Gb/s
-----------------	---------

### Body Features

Heat Sink Finish	Anodized Black
	.256 in
Heat Sink Height Class	SAN
Heat Sink Style	Pin

### Contact Features

PCB Contact Termination Area Plating Material	Tin
---	-----



### Termination Features

Termination Post & Tail Length	2.2 mm[.086 in]
Termination Method to Printed Circuit Board	Through Hole - Press-Fit

### Housing Features

Cage Material	Nickel Silver
---------------	---------------

### Dimensions

PCB Thickness (Recommended)	1.45 mm[.057 in]
-----------------------------	------------------

### Usage Conditions

Operating Temperature Range	-55 – 105 °C[-67 – 221 °F]
-----------------------------	----------------------------

### Operation/Application

Pluggable I/O Applications	SFP+ Stacked Belly-to-Belly
Circuit Application	Signal

### Industry Standards

UL Flammability Rating	UL 94V-0
------------------------	----------

### Packaging Features

Packaging Method	Box & Tray
------------------	------------

### Other

Included Lightpipe	Yes
EMI Containment Feature Type	Customer Applied Gasket

### Product Compliance

[For compliance documentation, visit the product page on TE.com>](#)

EU RoHS Directive 2011/65/EU	Compliant
EU ELV Directive 2000/53/EC	Compliant
China RoHS 2 Directive MIIT Order No 32, 2016	No Restricted Materials Above Threshold
EU REACH Regulation (EC) No. 1907/2006	Current ECHA Candidate List: JAN 2024 (240) Candidate List Declared Against: JAN 2021 (211) Does not contain REACH SVHC
Halogen Content	Not Low Halogen - contains Br or Cl > 900 ppm.
Solder Process Capability	Not applicable for solder process capability

Product Compliance Disclaimer

This information is provided based on reasonable inquiry of our suppliers and represents our current actual knowledge based on the information they provided. This information is subject to change. The part numbers that TE has identified as EU RoHS compliant have a maximum concentration of 0.1% by weight in homogenous materials for lead, hexavalent chromium, mercury, PBB, PBDE, DBP, BBP, DEHP, DIBP, and 0.01% for cadmium, or qualify for an exemption to these limits as defined in the Annexes of Directive 2011/65/EU (RoHS2). Finished electrical and electronic equipment products will be CE marked as required by Directive 2011/65/EU. Components may not be CE marked. Additionally, the part numbers that TE has identified as EU ELV compliant have a maximum concentration of 0.1% by weight in homogenous materials for lead, hexavalent chromium, and mercury, and 0.01% for cadmium, or qualify for an exemption to these limits as defined in the Annexes of Directive 2000/53/EC (ELV). Regarding the REACH Regulation, the information TE provides on SVHC in articles for this part number is based on the latest European Chemicals Agency (ECHA) 'Guidance on requirements for substances in articles' posted at this URL: <https://echa.europa.eu/guidance-documents/guidance-on-reach>

## Compatible Parts



TE Part # CAT-C11-H50111  
QSFP-Four SFP+ I/O Cable Assembly  
30 AWG



TE Part # 1888810-2  
EMI/Dust Cover,XFP And QSFP



TE Part # 2110819-1  
QSFP+ Enh EVERCLEAR PT Conn



TE Part # 1-2053638-6  
C/A, QSFP, 0.5M, P1-P2,  
UNEQUALIZED



TE Part # CAT-C11-H5011  
QSFP-Four SFP+ I/O Cable Assembly  
28 AWG



TE Part # CAT-C11-H5011142  
QSFP to QSFP I/O Cable Assembly: 33  
AWG



TE Part # 2202165-4  
QSFP TO QSFP, 26AWG, FDR, 4.0  
METER



TE Part # 2202165-5  
QSFP TO QSFP, 26AWG, FDR, 5.0  
METER



TE Part # 2829040-2  
QSFP IB EDR, 33AWG, 1.0M



TE Part # 2829040-4  
QSFP IB EDR, 30AWG, 1.0M



TE Part # 2829040-6  
QSFP IB EDR, 30AWG, 2.0M



TE Part # 2829040-7  
QSFP IB EDR, 26AWG, 2.0M

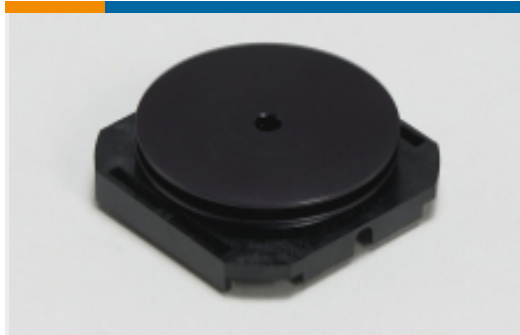


TE Part # 2829040-8  
QSFP IB EDR, 26AWG, 3.0M



TE Part # 2821033-8  
QSFP TO [4]SFP+, 28G, 1M, 33AWG

Also in the Series | QSFP/QSFP+



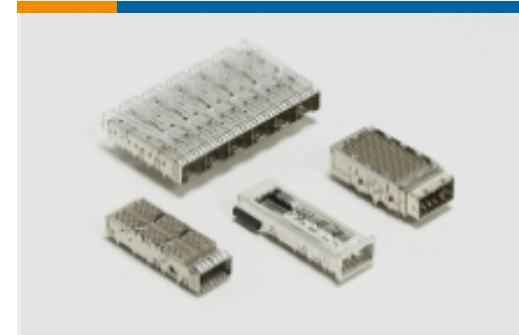
Heat Sinks(1)



Light Pipes(8)



Pluggable I/O Cable Assemblies(19)



Pluggable IO Connectors & Cages(154)

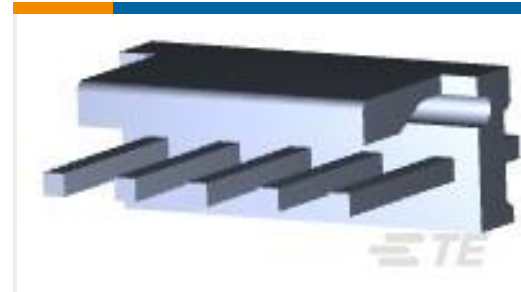
Customers Also Bought



TE Part #2-1462039-9  
IM23GR-IM RELAY 50mW 5V



TE Part #5207719-1  
KIT SCREWLOCK FEMALE



TE Part #640445-5  
05P MTA156 HDR ASSY FL/STR SN



TE Part #640445-8  
08P MTA156 HDR ASSY FL/STR SN



TE Part #1676199-2  
RN 0805 15K 0.1% 10PPM 1KRL



TE Part #1676282-2  
RN 0805 2K0 0.1% 10PPM 1KRL



TE Part #8-1625868-5  
RP 2A 0.25W 40R2 0.1% 25PPM 1K RL



TE Part #1676172-2  
RN 0805 12K1 0.1% 10PPM 1KRL



TE Part #1676445-2  
RN 0805 82R5 0.1% 10PPM 1KRL



TE Part #1-2176093-4  
RP 2A 0.25W 12K7 0.1% 25PPM 1K RL



## Documents

### Product Drawings

[Cage Assy SAN Hsink QSFP Behind Bezel](#)

English

---

### CAD Files

#### 3D PDF

3D

Customer View Model

[ENG\\_CVM\\_CVM\\_2170112-2\\_4.2d\\_dxf.zip](#)

English

Customer View Model

[ENG\\_CVM\\_CVM\\_2170112-2\\_4.3d\\_igs.zip](#)

English

Customer View Model

[ENG\\_CVM\\_CVM\\_2170112-2\\_4.3d\\_stp.zip](#)

English

By downloading the CAD file I accept and agree to the [Terms and Conditions](#) of use.

---

### Product Specifications

[Application Specification](#)

English

[Application Specification](#)

English

Looking for pricing, stock, or lifecycle information?

Click below to explore more details on WIN SOURCE:

[View 2170112-2 on WIN SOURCE](#)

[TE Connectivity Information](#)

### Optimize Your Supply Chain with WIN SOURCE Solutions

- ✓ Global Sourcing Solution
- ✓ Obsolete Management
- ✓ Cost Control Management
- ✓ Shortage Management
- ✓ Alternative Solution
- ✓ Excess Inventory Management