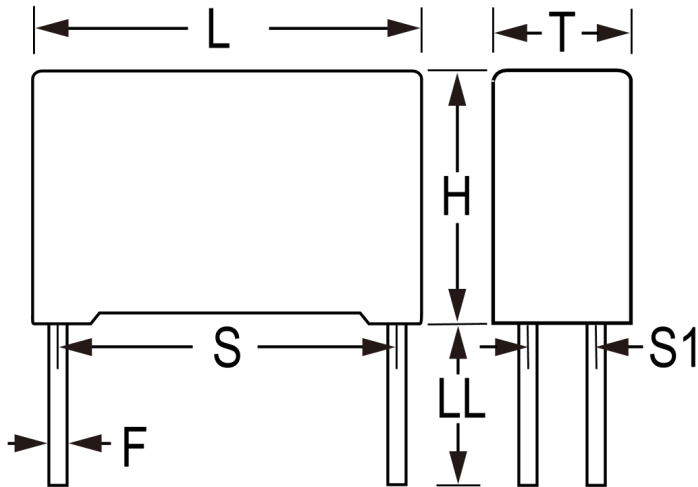




**THE DATASHEET OF
C4ATGBW4680A3GJ**





Click [here](#) for the 3D model.

Dimensions

| | |
|----|-----------------|
| L | 32mm -0.7mm |
| H | 37mm -0.7mm |
| T | 22mm -0.7mm |
| S | 27.5mm +/-0.4mm |
| S1 | 10.2mm +/-0.4mm |
| LL | 6mm -2mm |
| F | 1.2mm NOM |

Packaging Specifications

| | |
|--------------------|-----------|
| Packaging | Bulk, Bag |
| Packaging Quantity | 64 |

General Information

| | |
|--------------------------|--------------------------|
| Series | C4AT |
| Dielectric | Metallized Polypropylene |
| Style | Radial |
| Features | Switching |
| RoHS | Yes |
| Lead | 4 Wire Leads |
| AEC-Q200 | No |
| Typical Component Weight | 37.5 g |

Specifications

| | |
|-----------------------|---------------------------------------|
| Capacitance | 6.8 uF |
| Capacitance Tolerance | 5% |
| Voltage AC | 275 VAC |
| Voltage DC | 450 VDC |
| Temperature Range | -40/+85°C |
| Rated Temperature | 70°C |
| Dissipation Factor | 0.05% |
| Max dV/dt | 82 V/us |
| ESR | 1.6 mOhms (100kHz) |
| Ripple Current | 29 Amps (100kHz 70C), 554 Amps (Peak) |

Looking for pricing, stock, or lifecycle information?

Click below to explore more details on WIN SOURCE:

 [View C4ATGBW4680A3GJ on WIN SOURCE](#)

 [Kemet Information](#)

Optimize Your Supply Chain with WIN SOURCE Solutions

-  Global Sourcing Solution
-  Obsolete Management
-  Cost Control Management
-  Shortage Management
-  Alternative Solution
-  Excess Inventory Management