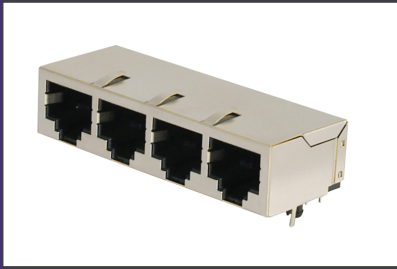




**THE DATASHEET OF
GSGX-NS-2-88-4.57**





MODULAR JACKS AND PLUGS: GSGX Series (With Panel Grounding Tabs) Right Angle Ganged Jack

Product Features

Available in up to 8 Ports Available
Fully Shielded for Category 5 Applications
High Temperature Reflow Compatible Through Hole Design
CSA/NRTL Certified File No. LR78160
UL File No. E134345

Performance Specifications

Materials and Finish

Housing Material

PBT Thermoplastic, UL 94V-0 Rated, Black Color

Shield Material

Copper Alloy, Nickel Plated

Contact Material

Phosphor Bronze

Durability

500 Mating Cycles Min.

Electrical Characteristics

Insulation Resistance

500 Megohms Min.

Dielectric Withstanding Voltage

1000V RMS, 60Hz

Contact Resistance

20 milliohms Max.

Current Rating

1.5A

Voltage Rating

125V DC

Operating Temperature

-40°C to +85°C

2D Drawing	IGES	STEP	3D PDF
Solder Profile	CofC RoHS Compliant	CofC REACH Compliant	UL Plastic File
Certificate of Origin	Check Stock	Request a Sample	Send Us An Email

Generated Part Number



Part Number Builder

<input type="text"/>	-	<input type="text"/>	<input type="text"/>	<input type="text"/>	<input type="text"/>	<input type="text"/>	<input type="text"/>
Series		Shield Option	No. of Port	No. of Positions	No. of Contacts	Ground Pin Spacing	Plating Option

Series

GSGX - Right Angle Ganged Jack

Shield Options

NS2 - Shielded with Top Only Ground Tabs

NS7 - Shielded with Top and Side Grounding Tabs

Number of Ports

2 - 2 Port

4 - 4 Port

5 - 5 Port

6 - 6 Port

8 - 8 Port

Number of Positions / Contacts

88 - 8 Positions / 8 Contacts

Ground Pin Spacing

368 - 3.68mm Ground Pin Spacing

457 - 4.57mm Ground Pin Spacing

Plating Option

Blank - Standard

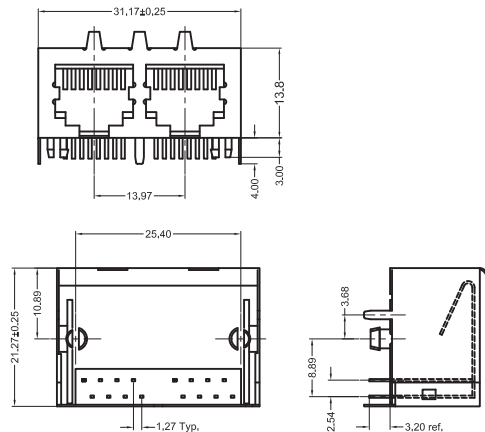
50 - 50µ" Gold Plating

Contact Kycon for Other Options

GSGX Series

Dimensions in mm

GSGX-NS2-288-368



Mouser Electronics

Authorized Distributor

Click to View Pricing, Inventory, Delivery & Lifecycle Information:

Kycon:

[GSGX-NS2-488-368](#) [GSGX-NS-2-88-4.57](#) [GSGX-NS-4-88-4.57](#) [GSGX-NS-5-88](#) [GSGX-NS7-488-457](#) [GSGX-NS2-488-457](#) [GSGX-NS-4-88](#) [GSGX-NS-2-88-50](#) [GSGX-NS-6-88-50](#) [GSGX-NS2-888-45750](#) [GSGX-NS7-888-45750](#) [GSGX-NS-8-88-50](#) [GSGX-NS2-288-368](#) [GSGX-NS2-688-457](#) [GSGX-NS-4-88-50](#) [GSGX-NS2-888-36850](#) [GSGX-NS-6-88-4.57](#) [GSGX-NS2-288-457](#) [GSGX-NS2-688-368](#) [GSGX-NS-6-88](#) [GSGX-NS2-288-36850](#) [GSGX-NS2-688-36850](#) [GSGX-NS2-488-36850](#) [GSGX-NS2-488-45750](#) [GSGX-NS7-488-45750](#) [GSGX-NS-2-88](#) [GSGX-NS-5-88-50](#) [GSGX-NS2-888-457](#) [GSGX-NS7-888-457](#) [GSGX-NS-8-88](#) [GSGX-NS2-888-368](#) [GSGX-NS2-288-45750](#) [GSGX-NS-5-88-45750](#) [GSGX-NSX-288-45750](#) [GSGX-NS-8-88-4.57](#) [GSGX-NS-10-88-50](#) [GSGX-NS-12-88](#) [GSGX-NSX-688-50](#) [GSGX-NS2-588-368](#) [GSGX-NS7-488-368](#) [GSGX-NS7-288-45750](#) [GSGX-NS7-288-457](#) [GSGX-NSX-488-45750](#) [GSGX-NS-5-88-4.57](#) [GSGX-NS2-588-45750](#) [GSGX-NS-2-88-45750](#) [GSGX-NS2-588-457](#) [GSGX-NS2-688-45750](#) [GSGX-NS2-588-36850](#) [GSGX-NS-12-88-50](#) [GSGX-NS-4-88-45750](#) [GSGX-NS-10-88](#) [GSGX-NS-8-88-45750](#) [GSGX-NSX-288-457](#) [GSGX-NS-6-88-45750](#) [GSGX-NS7-288-36850](#) [GSGX-NS7-888-36850](#) [GSGX-NS7-488-36850](#) [GSGX-NS7-688-36850](#) [GSGX-NS7-888-368](#) [GSGX-NS7-588-36850](#) [GSGX-NS7-288-368](#) [GSGX-NS7-688-368](#) [GSGX-NS7-588-368](#)

Looking for pricing, stock, or lifecycle information?

Click below to explore more details on WIN SOURCE:

 [View GSGX-NS-2-88-4.57 on WIN SOURCE](#)

 [Kycon, Inc. Information](#)

Optimize Your Supply Chain with WIN SOURCE Solutions

-  Global Sourcing Solution
-  Obsolete Management
-  Cost Control Management
-  Shortage Management
-  Alternative Solution
-  Excess Inventory Management