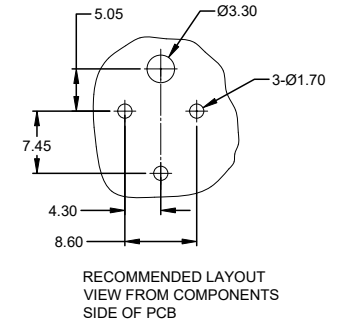
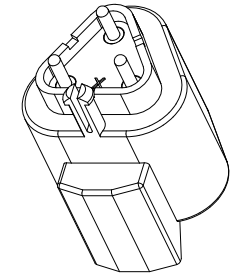
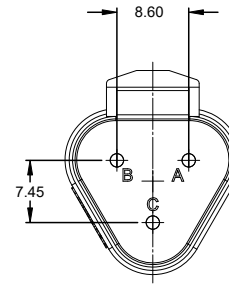
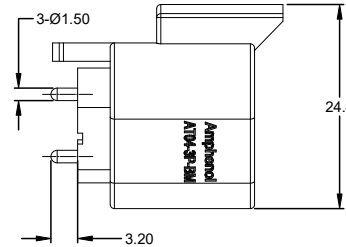
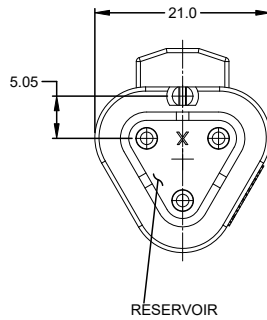
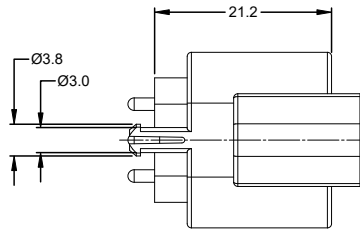




**THE DATASHEET OF
AT04-3P-BM04**



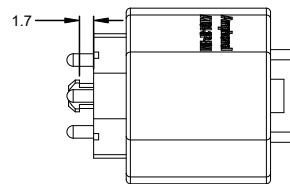
| REVISIONS | | | | | |
|-----------|-----|---------------------------------|-----------|--------|-------|
| REV | ECO | DESCRIPTION | DATE | BY | APPR |
| A1 | - | RELEASE NEW DWG FORMAT | NOV/07/15 | SULLEN | TOMMY |
| A2 | - | REVISE DRAWING | 10JUL20 | JHEAD | DH |
| A3 | - | REVISED DWG TITLE FOR MARKETING | 01JUL2024 | JHEAD | BL |



RECOMMENDED LAYOUT
VIEW FROM COMPONENTS
SIDE OF PCB

NOTES: UNLESS OTHERWISE SPECIFIED

- MATERIAL:
HOUSING: THERMOPLASTIC; COLOR: BLACK
CONTACT: COPPER ALLOY
- MODIFICATIONS: PCB MOUNT
- SPECIFICATIONS:
 - CURRENT RATING: 13 AMPS
 - OPERATING TEMPERATURE: -55°C TO +125°C
 - DIELECTRIC WITHSTANDING VOLTAGE: LESS THAN 2 MILLIAMPS CURRENT LEAKAGE @ 1500 VOLTS AC.
 - INSULATION RESISTANCE: 1000 MEGOHMS MIN @ 25°C.
 - MOISTURE RESISTANCE: IP67 (MATED CONDITION)
 - MATING CYCLE DURABILITY: 100 CYCLES
 - RoHS COMPLIANT
- MATING PART: AT06-3S* PLUG (* = MODIFICATIONS AND COLORS)
- ALL DIMENSIONS ARE FOR REFERENCE USE ONLY.
- POTTED CONNECTORS SPECIFIED FOR UP TO 5 P.S.I. APPLICATIONS.



| AT04-3P-BMXX VARIANTS | | |
|-----------------------|-----------------------------|--------------|
| CONTACT PLATING | POTTING OR NOT IN RESERVOIR | PART NUMBER |
| GOLD | NO POTTING | AT04-3P-BM01 |
| GOLD | POTTING | AT04-3P-BM02 |
| NICKEL | NO POTTING | AT04-3P-BM03 |
| NICKEL | POTTING | AT04-3P-BM04 |

| SEE PART NUMBER CHART | | DESCRIPTION | | ITEM |
|---|----------------|---|-----------|--------------|
| PART NUMBER | | DESCRIPTION | | ITEM |
| QUANTITY | MATERIALS LIST | | | |
| UNLESS OTHERWISE SPECIFIED 1) All dimensions are in metric(mm). 2) Tolerances are as follows: 1 PL DEC ±0.30 Fractions ±1/64 2 PL DEC ±0.15 Angles ±1° 3 PL DEC ±0.08 3) Note reference = | | SIGNATURES | DATE | |
| DRAWN: SULLEN ZHANG | | | 07/NOV/15 | |
| CHECKED: ORION LI | | | 07/NOV/15 | |
| ENGINEER: | | | | |
| APPROVAL: TOMMY XIE | | | 07/NOV/15 | |
| CUSTOMER: | | | | |
| MATERIAL SPECIFICATIONS: | | <p>Amphenol</p> <p>Sine Systems - www.amphenol-sine.com 44724 Morley Drive Clinton Township, MI 48036</p> | | |
| PROCESS SPECIFICATIONS: | | <p>THIS DRAWING IS SUPPLIED FOR INFORMATION ONLY. DESIGN FEATURES, SPECIFICATIONS AND PERFORMANCE DATA SHOWN HEREON ARE THE PROPERTY OF THE AMPHENOL CORPORATION. NO RIGHTS OF REPRODUCTION ARE IMPLIED. ALL DIMENSIONS ARE SUBJECT TO NORMAL MANUFACTURING VARIATIONS.</p> | | |
| NEXT ASSY: | | SIZE | TYPE | DWG NO. |
| | | B | C- | AT04-3P-BMXX |
| | | SCALE: NONE | | REVISION A3 |
| | | | | SHEET 1 OF 1 |

TITLE: PCB RECEPT, 3 POS, STRAIGHT, BOARDLOCK AT, SNAP-FIT, NON-KEYED, BLACK DWG NO.: AT04-3P-BMXX REV: A3 SH: 1 OF: 1

Looking for pricing, stock, or lifecycle information?

Click below to explore more details on WIN SOURCE:

 [View AT04-3P-BM04](#) on WIN SOURCE

 [Amphenol](#) Information

Optimize Your Supply Chain with WIN SOURCE Solutions

-  Global Sourcing Solution
-  Obsolete Management
-  Cost Control Management
-  Shortage Management
-  Alternative Solution
-  Excess Inventory Management