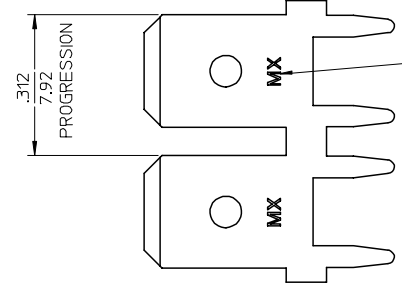
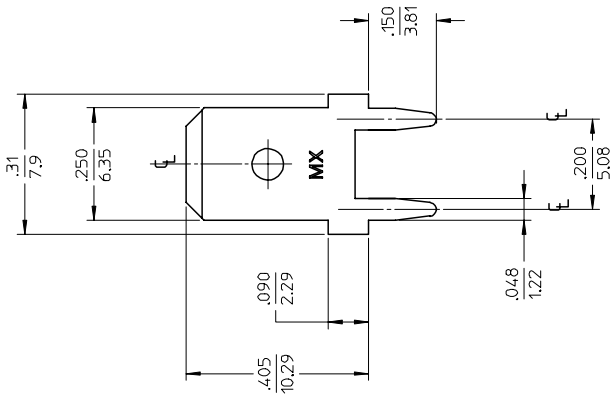




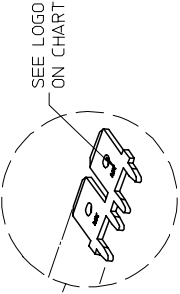
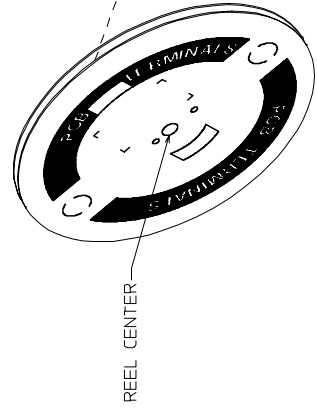
**THE DATASHEET OF
19705-4301**



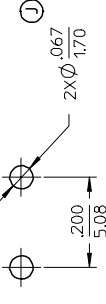
MATERIAL NUMBER	ENGINEERING NUMBER	CARRIER	LOGO ORIENTATION
197054303	19705-4303	STRIP	IN
197054305	19705-4305	STRIP	OUT
197054301	19705-4301	LOOSE	-



LOGO OPTIONS:
MX, ETC. OR MX-ETC



RECOMMENDED PCB HOLE LAYOUT



- NOTES:
1. BARE EDGES PERMISSIBLE AT CARRIER CUT OFF.
 2. MATERIAL: BRASS C26000 (.032/0.81) THICK.
 3. TAB CONFORMS TO NEMA SPECIFICATIONS.
 4. ALL DIMENSIONS AND NOTES REFERENCE UNLESS OTHERWISE NOTED.
 5. PLATING: MATTE TIN 150MIN/3.814mm MINIMUM THICKNESS OVER NICKEL 50MIN/1.254mm MINIMUM THICKNESS.
 6. REF: 9,000 MINIMUM PARTS PER REEL, REEL HAS 1/2" DIAMETER REEL WITH A 1.25" DIAMETER CENTER HOLE.
 7. PART IS ROHS COMPLIANT.

DESCRIPTION		QUALITY SYMBOLS		GENERAL TOLERANCES (UNLESS SPECIFIED)		DIMENSION STYLE	
EC NO: ETC2007-0403	DRWN:EHILE 2007/05/14	▽=0	▽=0	4 PLACES ± .005	IN/MM	DATE	5:
CH KD: JMACNELL 2007/05/14	APP R: JMACNELL 2007/05/14			3 PLACES ± .01		11/08/96	
REVISED PCB HOLE DIA				2 PLACES ± 0.13 ± 0.01		11/08/96	
				1 PLACE ± 0.25 ± .005		11/08/96	
				ANGULAR ±1/2°			
				DRAFT WHERE APPLICABLE MUST REMAIN WITHIN DIMENSIONS			

Looking for pricing, stock, or lifecycle information?

Click below to explore more details on WIN SOURCE:

 [View 19705-4301 on WIN SOURCE](#)

 [Molex, LLC Information](#)

Optimize Your Supply Chain with WIN SOURCE Solutions

-  Global Sourcing Solution
-  Obsolete Management
-  Cost Control Management
-  Shortage Management
-  Alternative Solution
-  Excess Inventory Management